

Created on: 01/22/02

Revised on: 01/22/02

Revision: 1.0

PC-Linq™ USB Cable User's Manual

Congratulations on your purchase of the PC-Linq USB Cable adapter. This unique cable allows you to easily connect two computers with USB port and instantly transfer files at great speed and ease.



Package Checklist

The PC-Linq USB Cable product package includes the following items:

- PC-Linq USB cable
- Driver and Software Installation Diskette
- This user's manual

Overview

The PC-Linq USB cable is your fast solution to peer-to-peer file transfer between two computers via the USB port. The PC-Linq cable provides true plug-n-play capability while transferring files at much greater speed than traditional file transfer products via serial or parallel port, more than 6M bits/sec can be achieved. In most applications, the user will get greater than 4M bits/sec of smooth file transfer rate. The PC-Linq application program, a Windows Program Manager-like user interface, provides a very easy to use environment that makes file transfer as easy as drag-and-drop. You simply plug in the PC-Linq cable and do a one-time installation of the program.

Features


The PC-Linq USB cable provides the following features:

- Single chip (ASIC) USB host to host communication
- High-speed data transfer rate from 6Mbps
- Single cable solution for data communication
- Windows 95 and 98 Support
- Easy drag-n-drop file transfer
- Includes print function for remote files
- Includes power management and remote wake-up functions
- Compliant with USB specification 1.1



System Requirements

Before you use the PC-Linq USB cable, make sure your computer is an IBM PC-compatible with the following minimum system requirements:

- Intel-compatible 486DX-66 MHz CPU or higher
- One standard USB port (4-pin) and has the symbol 
- Either the following operating systems:
 - Windows 95 OSR2.1 (B version) with USB version 1214
 - Windows 98

Driver & PC-Linq Program Installation

Follow the steps below on installing the PC-Linq USB cable and program for the first time:

1. Power on both computers where you will connect the PC-Linq cable and make sure that the USB port is enabled and working properly.
2. Plug in the USB cable into the USB port and Windows will detect an unknown device and run the **Add New Hardware Wizard** to assist you in setting up the new device.
3. Insert the PC-Linq USB cable driver diskette into the floppy drive and click **Next** to continue.
4. Select **Search for the best driver for your device** and click **Next**.
5. Select **Floppy disk drives** and click **OK**.
6. Windows will detect the driver (**usbhc.inf**) and shows the **USB Bridge Cable**. Click **NEXT** to continue installation.
7. Then the PC-Linq Setup program will start to begin program installation.
8. Follow the instructions on every dialog box to finish the installation.
9. After installation is complete, a shortcut of the PC-Linq program will be placed on your Windows desktop.



PC-Linq

Repeat the same procedure on the other computer.

-
10. For **Windows 95** users:
 - a. Select **Others** and click **Browse**. Change the folder of your floppy drive (ie:**A:WIN95**) and click **OK**.
 - b. Double check the folder that Windows prompts. Click **OK**.
 - c. Click **Finish** to install drivers.
 - d. Windows will prompt **Please insert windows 95 CD-ROM** and click **OK**.
 - e. Click **Browse** and change the folder of your floppy drive (ie:**A:\ WIN95**) and click **OK**.
 - f. Double check the folder that Windows prompts. Click **OK** to continue until installation is complete.

PC-Linq Program Installation

After installing the device driver for the PC-Linq cable, you need to install the PC-Linq application program for transferring files:

1. Insert the PC-Linq driver diskette into the floppy disk drive and run the **Setup.exe** program.
2. The PC-Linq Setup program will start to begin program installation.
3. Follow the instructions on every dialog box to finish the installation.
4. After installation is complete, a shortcut of the PC-Linq program will be placed on your Windows desktop.



PC-Linq

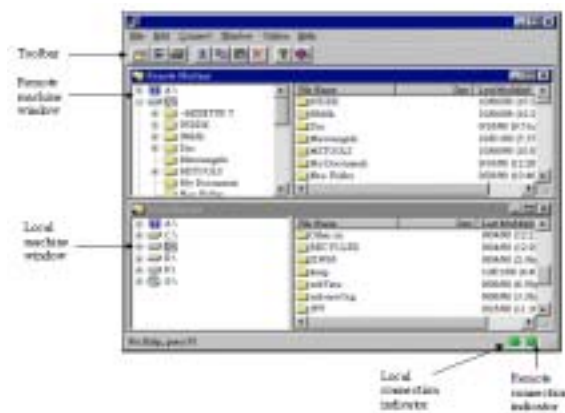
Repeat the same procedure on the other computer.

Running the PC-Linq Program

Follow the steps below on how to run the PC-Linq program:

1. Plug in both ends of the PC-Linq USB cable to the two computers.
2. Double-click on the PC-Linq shortcut icon on your desktop screen. Do the same for the other computer.

-
3. The PC-Linq File Manager will appear on your screen and will detect both the local and remote machine. This is much similar with Windows Explorer file



4. manager where you can cut, copy, paste, or drag files and folders.
5. You can also print text or document files from the remote machine to your local printer by clicking on the file and run File-Print command.
6. There are two LED-like indicators found on the bottom-right corner of the PC-Linq File Manager. These indicators show the connection status of the remote and local machine. The left LED is for the local machine, while the right LED is for the remote machine. A green LED indicates that the connection is good while a red LED indicates that connection is not found. Both LEDs need to be in green color for a proper link and operation. If one LED is red, either the USB cable is not properly connected, or the software is not properly installed, or the PC is in suspend mode.
7. Click on the Help Topics icon (rightmost icon) for more information on how to use the program.

Power management and Remote Wake-up Function

The PC-Linq supports power management of USB. When either of the two connected PC gets into suspend, the PC-Linq will draw less than 500 μ A of current from it. This is essential for the notebook or other mobile PC.

The PC-Linq program also includes the remote wakeup function. Whenever the remote machine goes into suspend mode, you just click on any file or folder inside the remote machine folder and the remote machine will resume to normal operation mode.

However, you can disable this function to avoid the annoyance of suspend-wakeup sequence during operating the PC-Linq application. Please click the menu bar's **Option**, then click **Setting**, and disable the **Allow System to Suspend** option.

Program Uninstallation

You can uninstall the PC-Linq application program and driver by selecting the **Uninstall PC-Linq** item from the PC-Linq program group and follow the on-screen instructions to complete the process.

Disclaimer

Information in this document is subject to change without notice. The manufacturer does not make any representations or warranties (implied or otherwise) regarding the accuracy and completeness of this document and shall in no event be liable for any loss of profit or any other commercial damage, including but not limited to special, incidental, consequential, or other damages.

No part of this document may be reproduced or transmitted in any form by any means, electronic or mechanical, including photocopying, recording or information recording and retrieval systems without the express written permission of the manufacturer.

All brand names and product names used in this document are trademarks, or registered trademarks of their respective holders.

FCC Statement

This device generates and uses radio frequency and may cause interference to radio and television reception if not installed and used properly. This has been tested and found to comply with the limits of a Class B computing device in accordance with the specifications in Part 15 of FCC Rules. These specifications are designed to provide reasonable protection against such interference in a residential installation. However, there is no guarantee that interference will not occur in a particular installation. If this device does cause harmful interference to radio or television reception, which can be determined by plugging the device in and out, the user can try to correct the interference by one or more of the following measures:

-
- Reorient or relocate the receiving antenna.
 - Increase the separation between the device and receiver.
 - Connect the computer into an outlet on a circuit different from that to which the receiver is connected.
 - Consult the dealer or an experienced radio/TV technician for help.

Copyright © 1998 Prolific Technology Inc. All rights reserved.