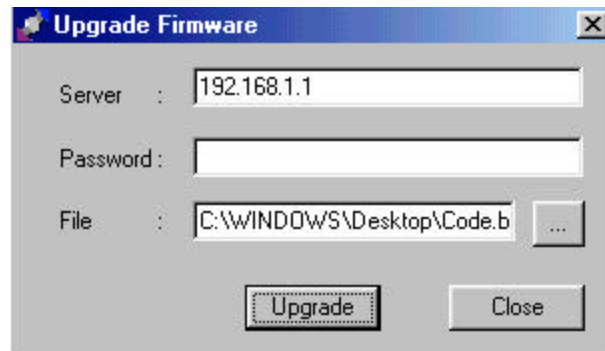


How to Upgrade the Router Firmware

The EtherFast Cable/DSL Router has the capability to be upgraded with new firmware. Please read the instructions below to perform the upgrade.

1. Using Winzip or another unzip program, unzip the contents of the zipped file into an available subdirectory. Run Windows Explorer and go to the subdirectory where you saved your files.
2. Double click on Tftp to install the Upgrade Firmware software. The Upgrade Firmware dialog box will appear.



3. Fill in the following information:

Server – Enter the IP Address that you assigned to the router. By default, the router's IP Address is 192.168.1.1 as shown above.

Password – Enter the password you assigned to the router. By default, the router's password is "admin".

File – Click the triple "." button to browse for the firmware file with the BIN extension. The BIN extension file was part of the extracted file you downloaded. In the example, "code.bin" was extracted on the Windows desktop.
4. Click Upgrade button to start upgrade process. A status bar will appear to monitor progress. When the upgrade process is completed, click **OK** and close the window.

Congratulations, your upgrade is complete!

Enhanced Security Option Using Zone Alarm Pro and PC-Cillin

Linksys has joined forces with the security experts at Zone Labs and Trend Micro to provide easy, low-cost, comprehensive protection for your broadband-connected PCs. Protect yourself against viruses and from the prying eyes of Internet hackers and thieves. And, for added assurance, your Linksys router verifies that all your PCs stay secure with the most up-to-date versions of ZoneAlarm Pro and PC-cillin.

Why Do I Need Additional Security?

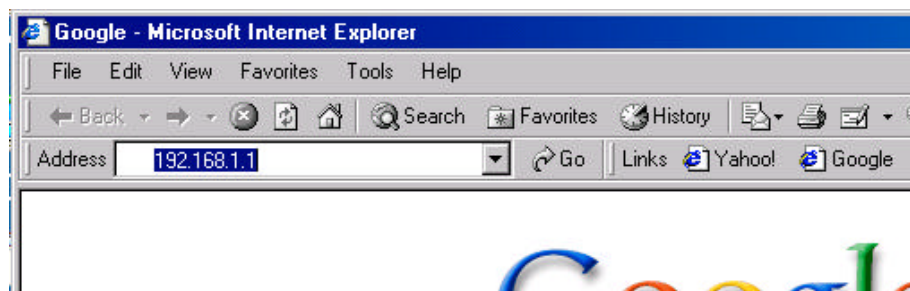
Why do I need additional security when my Linksys router comes with a built-in firewall? The Linksys router excels in protecting against attacks coming over the Web, not against hackers who might tap directly into your local network using a wireless connection. In addition, Zone Alarm Pro can alert you to Trojan horses - malicious programs that hackers secretly install on your computer to send data back to them, thereby circumventing the router's firewall. And, PC-Cillin protects against viruses that can pass through the router's defenses.

With the combination of your Linksys Router, ZoneAlarm Pro and PC-cillin 2000, your best-of-breed Internet security solution includes:

- Always-on Personal Firewall
- Automatic Intrusion Blocking
- World-class Virus Protection

Here's how to install and configure ZoneAlarm Pro and PC-cillin 2000 on your router.

1. If you are running other firewalls or virus checkers and would rather install ZoneAlarm Pro and/or PC-cillin, deactivate the existing software on each client PC.
2. Start your browser. Enter "192.168.1.1" (or an updated TCP/IP address if you've changed the default settings) into the address field to access the router's configuration pages.



3. At "Enter Network Password", tab to the Password field and type in "admin" (lower case). Or, type in your User Name and Password if you've created your own.



- Click on the "Security" tab to begin the installation process.



- Start the Software Download by clicking on "Download ZoneAlarm Pro and PC-Cillin".
You will be directed to the Internet Security Center where you can select the appropriate license pack for your network. Follow the prompts to purchase and download the software to your computer.
Remember to print the summary page. It contains the license key(s) you'll need for software installation and/or router configuration. If you can't print the page, then write the license key(s) down. You will also be emailed a confirmation invoice with the key(s).
- On the first computer, install the software you've selected and enter the license key if and when requested.
Note: When adding security enhancements to the rest of your networked computers, you can either copy the downloaded files to the other PCs or re-download the software on each individual PC without incurring any more costs.
Repeat Step 6 for each client you want protected with Zone Alarm Pro and/or PC-Cillin.
- Once all the PCs are properly protected, and if you are installing Zone Alarm Pro, enter the ZoneAlarm Pro license key in the "License Key" field of the router's Security Configuration Panel (shown above).

Zone Alarm Pro requires that the key be loaded in the router's Security panel. PC-Cillin only requires that the keys be entered when installing the client PCs.

8. Check the "Enforce ZoneAlarm Pro Security" and/or "Enforce PC-Cillin Anti-Virus" check boxes depending on the software packages you installed.

Note, if you check the "Enforce" box, the router forces all users (except for those in the Exempt computers range) to run Zone Alarm Pro and/or PC-Cillin. If they are not running Zone Alarm Pro and/or PC-Cillin, they will be unable to access the Internet.

9. We recommend that you leave the "Enforcement Level" at the "More Secure" default unless you notice router performance degradation.
10. You can select a TCP/IP range for PCs and other machines that you don't want managed under the security enforcement umbrella. For example, you may be using other firewalls, anti-virus scanners, or may be running Linux or Macintosh computers. If you are using this option, it may be easier to assign static IP addresses to those.
11. Press "Apply" when finished with the configuration.