



wePresent

Wireless interactive Presentation Gateway

User's Manual for iOS

(Model Name: WiPG-1000)

1. MobiShow Utility for iOS

1.1 Download from App Store



- A. Turn on WiFi on your phone.
- B. Connect your phone to Internet network.
- C. Launch the App Store
- D. Download the MobiShow application.(Figure.1)
- E. Follow the instructions to finish the installation.

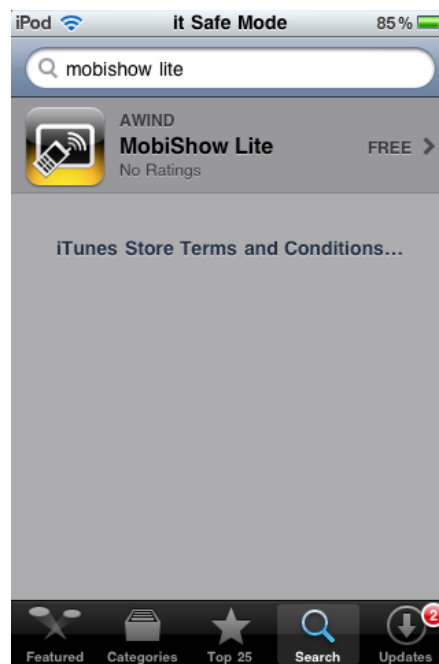
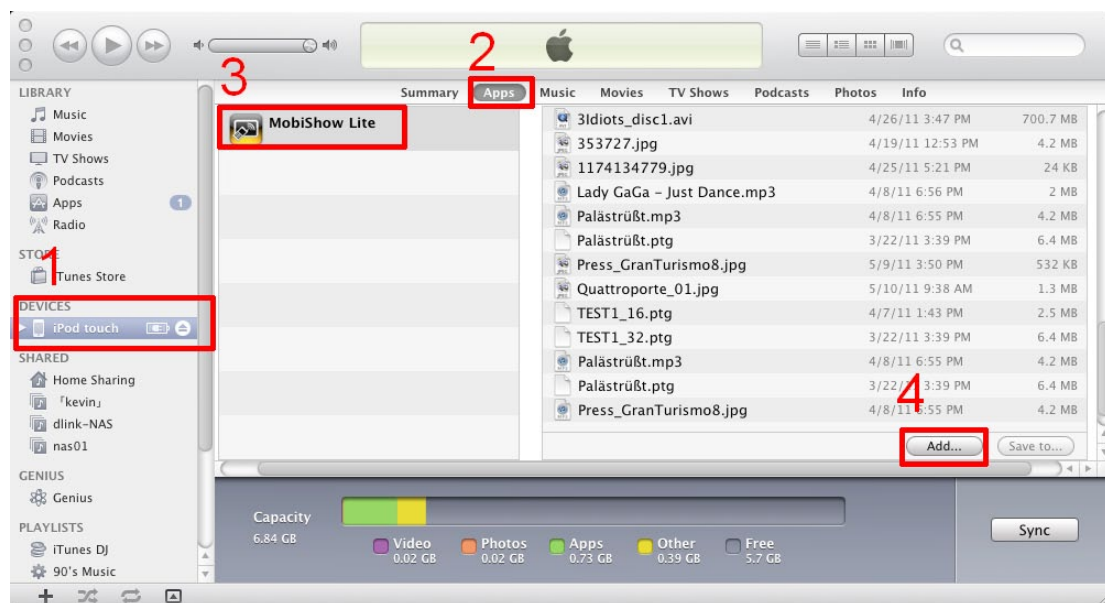


Figure.1

1.2 Upload Files with iTunes



- A. Click iTunes to launch application
- B. Connect your iPhone/iPod/iPad to PC/Laptop.
- C. Click the iPhone/iPod/iPad device.(step.1)
- D. Click the Apps list.(step.2).
- E. Click MobiShow and you can see everything you uploaded associated with MobiShow Lite.(step.3)
- F. Click add button, and choose file to upload to your iPhone/iPod/iPad. (step.4)



1.3 Using MobiShow with iOS Device


- A. Enable the WiFi and connect to the Access Point where the MobiShow compatible device connected.
- B. Select “MobiShow” icon  to launch the client software.
- C. MobiShow client will start to search for MobiShow compatible devices automatically.(Figure.2)
- D. Choose a MobiShow device, it will popup the login page. Enter the login code and press login. (Figure.3)



Figure.2

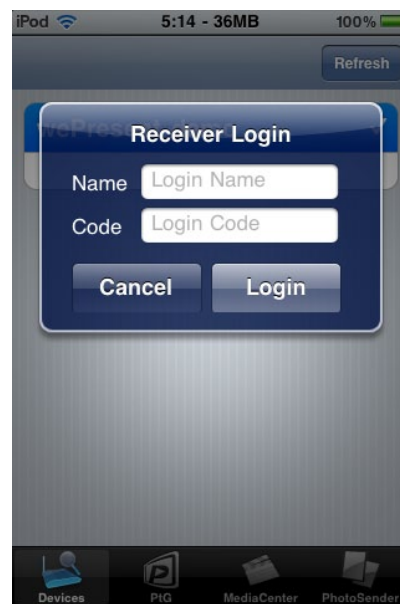


Figure.3

- E. Select “PhotoSender” icon to projection the photo files and “PtG” icon to do a PC-less presentation with Presentation-to-Go. (PtG)



Figure.4



Figure.5

1.3.1. Photo

You can use MobiShow to project photos stored on your phone to big screen. The photos will be prepared for playback on big screens rather than for the tiny screens of your phone.

Open and select the photo file, then project it on the big screen through MobiShow compatible device.



Figure.6

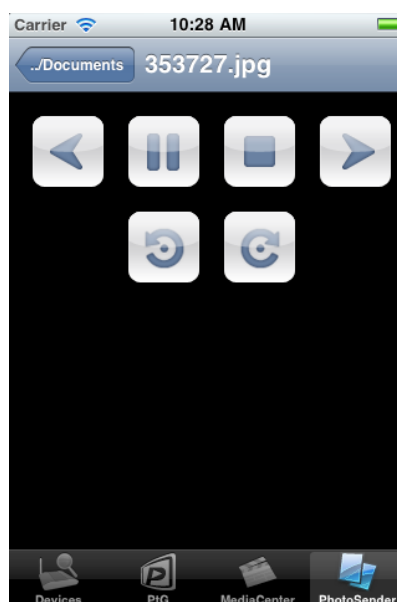




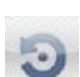



Figure.7

Button	Description
	Go to previous photo file.
	Start/Pause slide show.
	Stop slide show.
	Go to next photo file.
	Rotate to left-90 degree.
	Rotate to right-90 degree.

1.3.2. PtG

You can use MobiShow to do the PC-Less Interactive presentation by PtG Feature. When the PtG file is open, the PtG slides will be projected, and the following screen is displayed on your phone for you to control your PtG presentation.



Figure.8



Figure.9

Button	Description
	Go to previous page.
	Go to previous step.
	Go to next step.
	Go to next page.
	Play next step.
	Stop projection.

Note:


You need to use "PtG converter.exe" to convert Powerpoint to the PtG file first.


1.4 Using PtG converter



- A. Open “**PtG Converter**” in “**PtG Converter**” folder from “**Programs**” in the Start menu. The following control panel is displayed on your Desktop when it is launched.



Figure.12

- B. Click the “ **Convert**” button to select a PowerPoint PPT file and start conversion. PtG Converter will open the PowerPoint file and convert it to PtG format. You can see the conversion process on your Desktop.

- C. Click the “ **Preview**” button to expand or collapse the preview pane.

Click “ **Play**” to playback selected PtG file, or click “ **Open**” to select a PtG file.

2. WiFi-Doc Utility for iOS Device

2.1 Download from App Store

- A. Turn on WiFi on your phone.
- B. Connect your phone to Internet network.
- C. Launch the App Store.
- D. Download the WiFi-Doc application.(Figure.1)
- E. Follow the instructions to finish the installation.

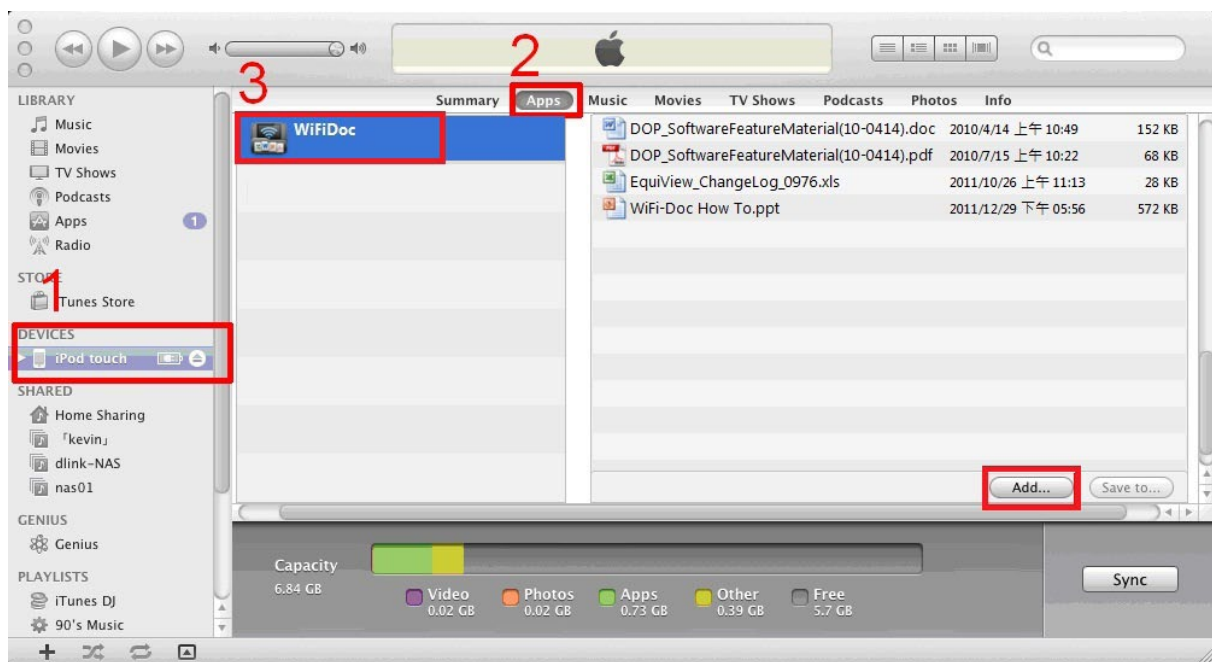


Figure.1

2.2 Upload Files with iTunes



- A. Click iTunes to launch application
- B. Connect your iPhone/iPod/iPad to PC/Laptop.
- C. Click the iPhone/iPod/iPad device.(step.1)
- D. Click the Apps list.(step.2).
- E. Click WiFi-Doc and you can see everything you uploaded associated with WiFi-Doc Lite.(step.3)
- F. Click add button, and choose file to upload to your iPhone/iPod/iPad. (step.4)



2.3 Using WiFi-Doc with iOS Device


- A. Enable the WiFi and connect to the Access Point where the WiFi-Doc compatible device connected.
- B. Select “WiFi-Doc” icon  to launch the client software.
- C. WiFi-Doc client will start to search for WiFi-Doc compatible devices automatically.(Figure.2)
- D. Choose a WiFi-Doc device, it will popup the login page. Enter the login code and press login. (Figure.3)



Figure.2



Figure.3

2.3.1. Documents

You can use WiFi-Doc to project Documents (word,pdf,excel and powerpoint files) stored on your phone to big screen. The document will be prepared for playback on big screens rather than for the tiny screens of your phone.

Open and select the document file, then project it on the big screen through WiFi-Doc compatible device.

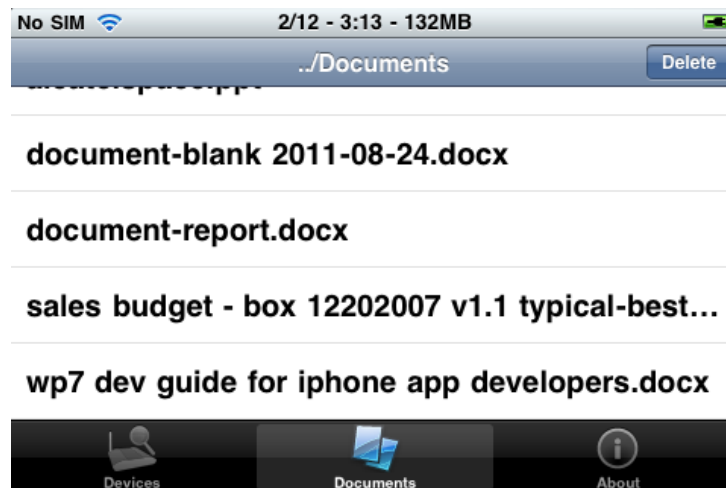


Figure.4



Figure.5

As below photo shown (Figure.6), you can also use the go to page function to jump to the page which you want directly.

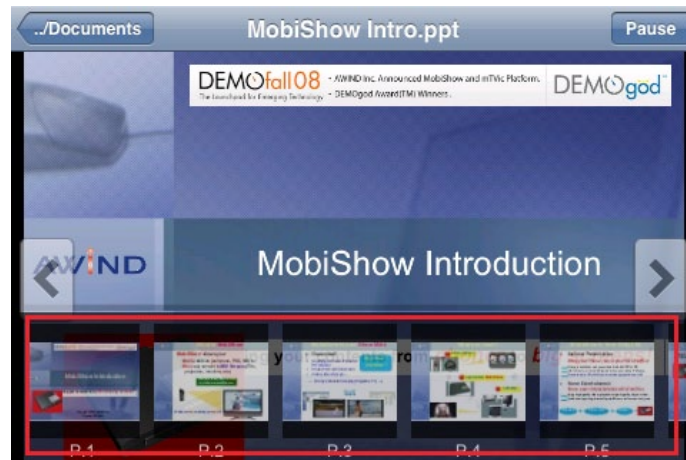







Figure.6

As below photo (Figure.7), zoom in/out function is available; you can use your finger on your phone to zoom in/out the projection screen during document playback.



Figure.7

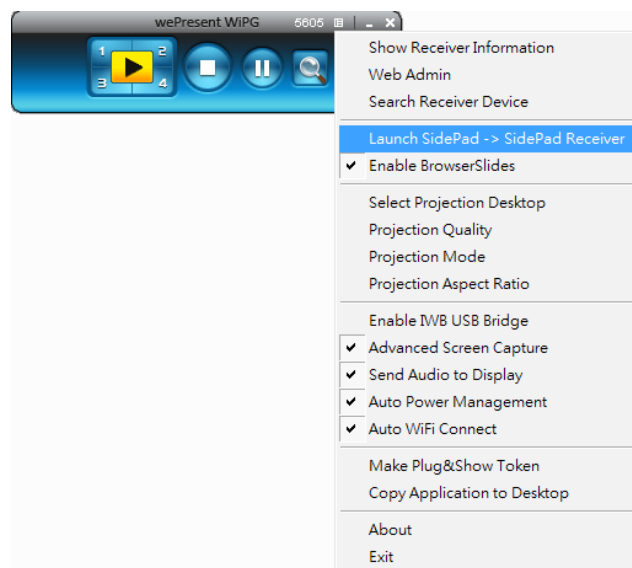
Button	Description
	Go to previous page.
	Go to next page.
	Pause
	Play
	Go to documents select screen

3.SidePad Control from iOS Device

- Download “SidePad Receiver” from App Store
- Connect to WiPG-1000 device through WiFi and Launch “SidePad Receiver”



- Open the main menu of the WiPG-1000 application(Win/Mac), and choose the item, “Launch SidePad -> SidePad Receiver ”



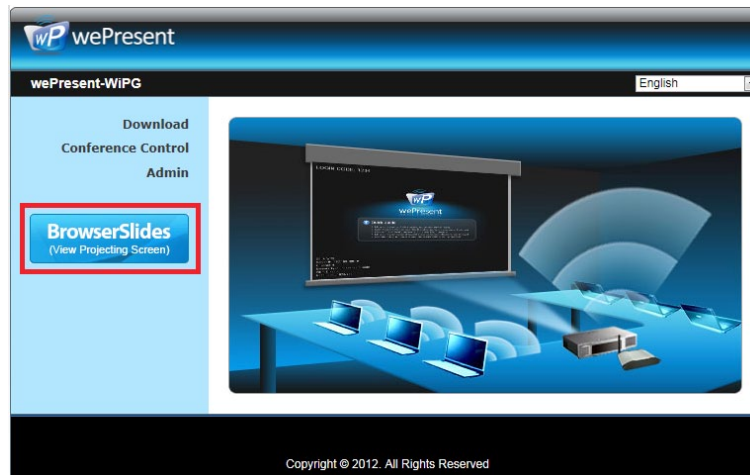
- In seconds, you shall see the PC desktop shown on the iOS Device. Use two fingers to pinch or one finger to pan the desktop image and control it by single or double clicks!



4. BrowserSlides for iOS Device

• Audience:

- From audience's iOS device, connect its WiFi to the "WiPG-1000" device, then launch the browser
- Enter "192.168.100.10" (Receiver IP address) on the URL of browser Click the "BrowserSlides" button

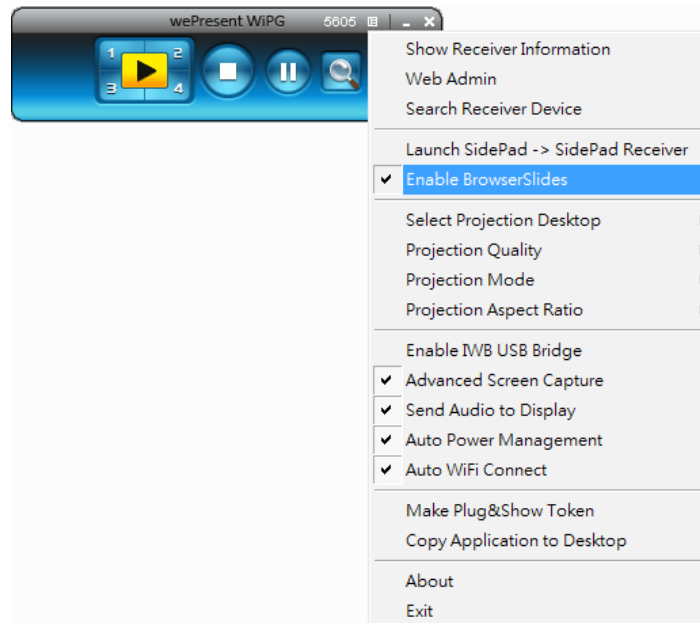


- Start to receive the speaker's slides (Auto refresh every 30 sec)



- **Speaker:**

- Open the main menu of the WiPG-1000 PC application (Win/Mac), and choose the item, "Enable BrowserSlides", then it will start to broadcast your slides to mobile device.



Note:

The WiPG-1000 logged-in user is not identical to BrowserSlides user, and they both consume the wireless bandwidth for device connection. If there are more than 10 users logged into WiPG-1000, it is recommended to connect WiPG-1000 to company network through Ethernet or bridge WiPG-1000 to a router due to wireless bandwidth concern. User should connect WiPG-1000 via company network or router in order to secure the projection performance. The BrowserSlides user number should not exceed the recommended number on the web management page to prevent the connection failure or low projection performance.

PS. Wireless Projection function and Conference Control function can support up to 64 users.