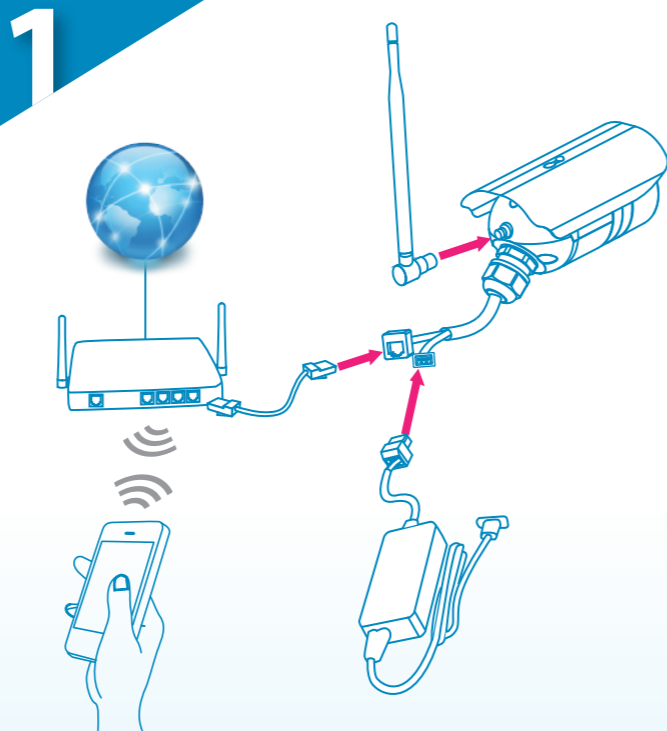




TN1500/TN1500W Cloud Network Camera Quick Start Guide

This Quick Start Guide includes the QR-code to install your IP camera. Please keep this guide in case of you need to reinstall the network camera.



- Connect an Ethernet cable between IP camera and your wireless router. (If you are using the TN1500W model, please attach the wireless antenna to your IP camera.)
- Attach the power adapter to the camera's power connector and connect the power plug to a power outlet.
- Make sure your smartphone is able to access the internet via your switch/router.



iPhone



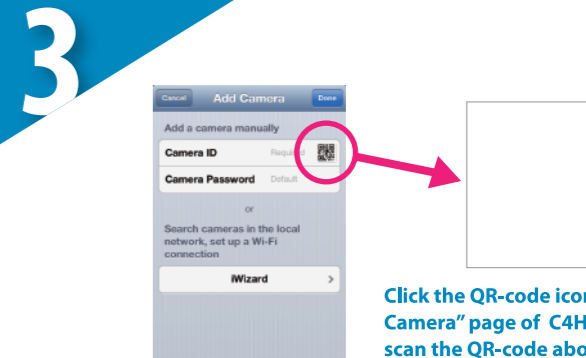
C4Home app



Android



- Using iPhone or Android phone to scan the QR code above for download and install the C4Home app. (Also you can download the C4Home app from App Store or Google Play.)
- Start the C4Home app and register your personal account.



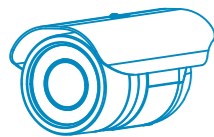
Click the QR-code icon on the "Add Camera" page of C4Home app and scan the QR-code above to add camera.



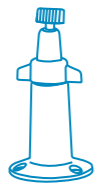
- Login the C4Home app and add new camera:
 1. Scan the QR code above to install camera (Or direct input the 10 digits camera ID under the QR code)
 2. Click "iWizard" to search/install camera from local network
- After installation, now you can watch the live video of camera from C4Home app or login to the www.c4home.com from PC.

Package Contents

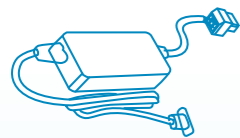
Please check the package contents on your hand. If anything is missing, please don't hesitate to contact your local distributor.



Network Camera



Bracket



Power Adapter and Power Cable



Installation CD



Quick Start Guide

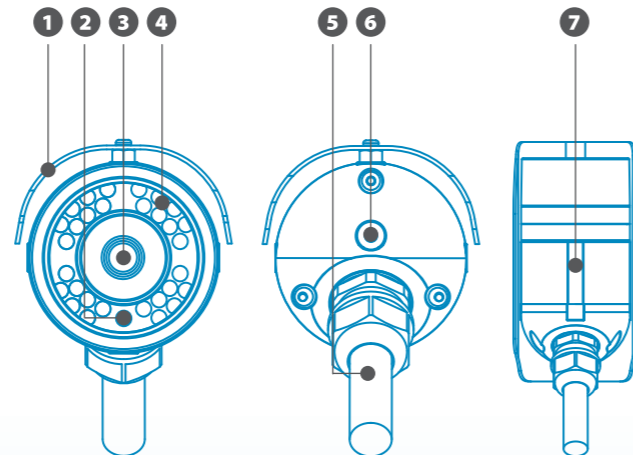


Ethernet Cable



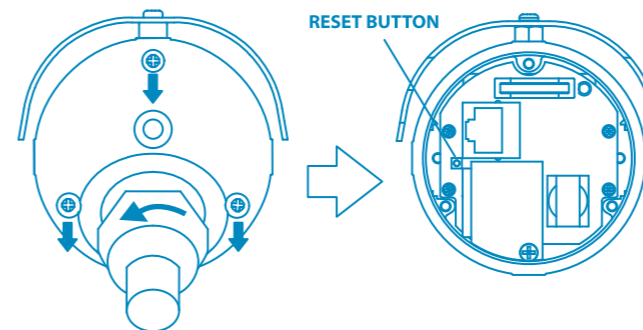
Wireless Antenna (TN1500W only)

Camera Layout



No.	Name	Description
1	Sunshield	prevents overheating
2	Ambient light sensor	detects lighting conditions
3	Lens	4.0 mm, F1.5, fixed iris, IR-corrected
4	IR LEDs	a total of 30 built-in IR LEDs to provide illumination in total darkness
5	Terminal cable	includes power and Ethernet cable
6	Wireless antenna connector (TN1500W)	allows you to attach the antenna for wireless connection
7	Screw hole for bracket	allows you to install camera bracket

Reset Camera




Reset Button

The reset button of your IP camera is located at the rear end of the camera body (inside the housing). To access the reset button, you need to open the dome-shaped back cover. In order to do so, first loosen the plastic hexagonal ring that fastens the cables to the rear end of camera housing, and then unscrew the screws that fixes the dome-shaped back cover.

Compro Technical Support Information

For any problems you may encounter, please refer to the user's manual on the installation CD. If you need further assistance from Compro technology, you can fill out the online help form (www.comprousa.com/feedback/) or direct email us at support@comprousa.com.

Trademark

 Compro Technology is the registered logo of Compro Technology, Inc. C4Home and C4Home app are registered trademarks of AVSecur Technology, Inc. All other company and product names mentioned in this document are registered trademarks of the respective companies.

Restriction & Disclaimer

No part of this document may be copied or reproduced in any form or by any means without the prior written consent of Compro Technology, Inc. Compro Technology makes no warranties with respect to this documentation and disclaims any implied warranties of merchantability, quality, or fitness for any particular purpose. The information in this document is subject to change without prior notice.

Compro Technology, Inc.

www.comprousa.com
Tel. +886 2 2918 0169 | Fax +886 2 2915 2389
4F, No.12, Alley 6, Lane 45, Pao Shin Road, Hsintien District, New Taipei City 231, Taiwan
© 2013 Compro Technology, Inc. All rights reserved.