

Superminiature VGA Camcorder
User Manual

Introduction

Thank you for purchasing your super mini VGA camcorder. Our Sport DV gives you the ability to perform personal investigations, conduct secret video surveillance, or for any ideal covert operation where gathering evidence is important. Ideal for both agent cam & hidden camera, small enough to conceal almost anywhere! Our Sport DV is small enough where it can be concealed almost anywhere and you won't miss anything.



What your mini sport DV includes:

- Super Mini VGA Camcorder
- USB & Adapter cable
- PC Camera driver disk
- User Manual

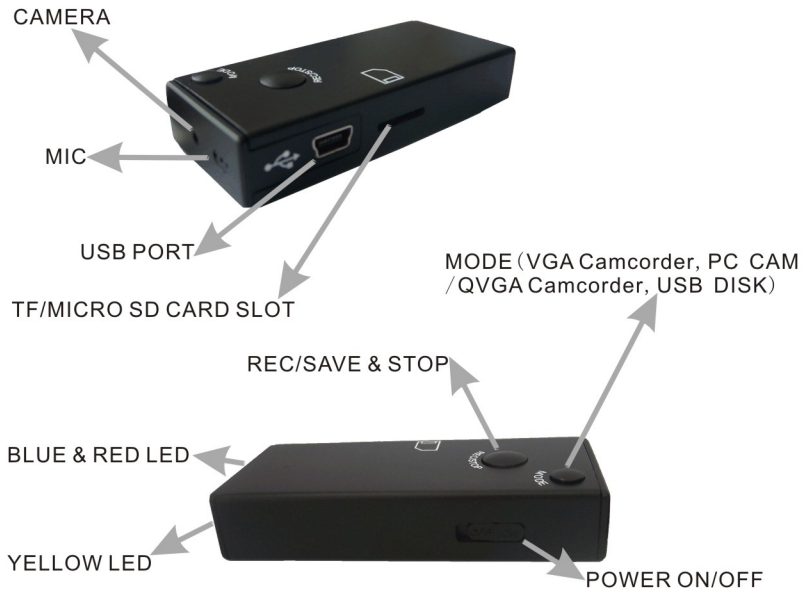
Features

- Dimension:L65mmxW29.3xH12.5mm
- Weight:26g
- Tiny size makes it ideal for a variety of uses.
- It's great for use as a sport DV, hidden cam etc.
- Real time recording in *.AVI video format
- Apply to the sporter for recording the game video, the color video with voice lets you clearly see who's there & hear what they say.
- Place it up high or conceal it down low. With built-in rechargeable battery so there's no long cord for you to hide.
- Playback the video on cell phone or PC.

Camera Technical Parameter

- Video Compression: AVI video format,640x480,VGA/25fps
- Voice Recording: Yes
- PC camera support: Yes, 1.3 mega pixel web cam
- Micro SD card / T-Flash card support: 256MB to 2GB
- Video File Size: about 40MB/Minute (VGA Mode)
about 10MB/Minute (QVGA Mode)
- Recording Mode: Continuous recording until memory is full or manually off;
Repeated & Continuous recording, every 5 minutes per video clip; (optional)
- Adaptor Type: USB adaptor charging cable
- Battery Type: 390MAH Lithium-ion
- Record Time: Up to 1.2 hours

Illustration of Camera Functions



Installing a Memory Card

This camera has no internal memory, please insert a Micro SD(T-Flash) card before recording.



- This product supports Micro SD card up to 2GB.
- Please insert Micro SD card into the remarkable place of the machine, the basement will be injured permanently with the inaccurate insertion and extraction.

Starting your Super Mini VGA Camcorder

Step 1:

Insert the Micro SD card by pushing it firmly into the slot until clicks into place.

Step 2:

Press the power ON/OFF button to ON.

Step 3:

Press and hold the REC/SAVE & STOP button down for 3 seconds until the “pale red” light indicator will turn off, then undo the REC/SAVE & STOP button, The power light indicator will turn “red” and the camera will be in a stand-by status.

Step 4:

Press the MODE button, the mode light indicator will turn “yellow”. The camera will be ready for VGA REC or PC CAM function. If you press the MODE button again, the yellow indicator will be turn out. The camera is ready for QVGA REC or USB Disk function.

Step 5:

Press the REC/SAVE & STOP button , the camera is recording video & voice. The light on “blue” and twinkle. If you press the REC/SAVE & STOP button again, the recording data will be saved and the camera will be ready for next recording.

Step 6:

Press and hold the REC/SAVE & STOP button down for 3 seconds to stop recording when the camera is on, the recording data will be saved and any indicator will be turn off.

Attention:

Do not move the “Power ON/OFF” button while the camera is recording, otherwise all recordings will be lost.

Connect to PC with USB cable

Insert the Micro SD card by pushing it firmly into the slot until clicks into place.

Press the power button to ON.

Press and hold the REC/SAVE & STOP button down for 3 seconds until the "pale red" light indicator will turn off, then undo the REC/SAVE & STOP button, The power light indicator will turn "red" and the camera will be in a stand-by status.

Press the MODE button, the mode on indicator will lights on "yellow". The camera is ready for VGA REC or PC CAM function.

If you press the MODE button again, the yellow indicator will be turn out. The camera is ready for QVGA REC or USB Disk function.

Please install the software before you use the PC CAM function.

connect to PC
with usb cable

Function as PC CAM, the red led lights at this time, the camera is in the state of charging while the red light is twinkling. You can use this camera for chatting with video by IM software, for example: MSN, SKYPE, QQ ect.

connect to PC
with usb cable

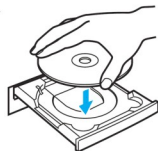
Function as removable disk, playback the video files stored Micro SD card via the computer, the red led lights at this time, the camera is in the state of charging while the red light is twinkling. You can also directly charge the camera using an adaptor accorded with the specifications of USB. Charging 2 Hours is necessary.

Attention:

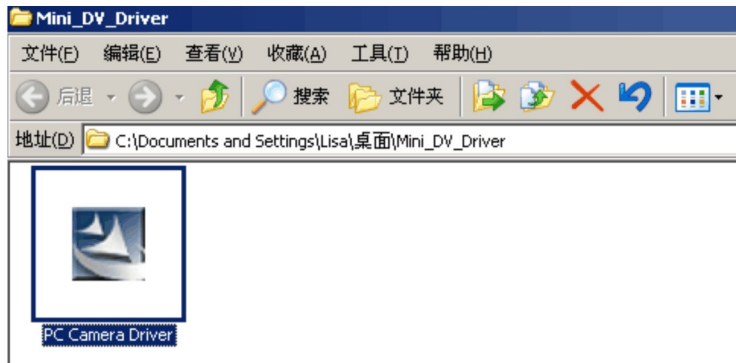
Please use the "Adapter DC 5V" plug if you want to charge the camera using an adaptor accorded with the specifications of USB.

Install the PC CAM software

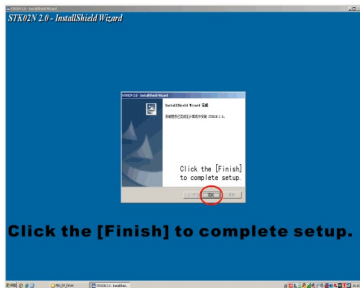
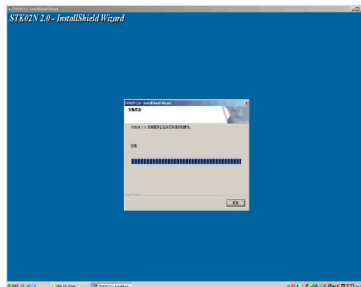
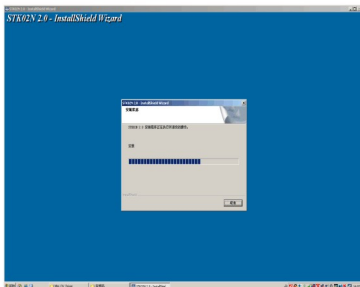
Place the PC CAM Driver Disk into your computer's CD-ROM drive.



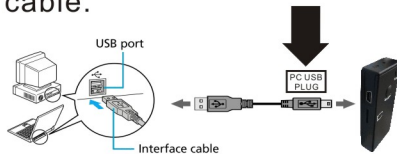
Double-click the [PC Camera Driver.exe] icons in the CD-ROM window.



Install the PC CAM software



When the installation is complete, and click [Finish]. Connect to PC with USB cable.



Frequently Asked Questions

Q: How do I review my video recordings?

A: Use the Micro SD card to playback the video files in your cell phone, PC or use your USB cable from the camera to the PC USB port to review your video recordings.

Q: Why are my video recordings disappearing soon after I turn off the camera?

A: If you turned off the power to the camera first, then all your recordings will be erased. To prevent from accidentally erasing the video files, press the “REC/SAVE & STOP” recording button first before turning off the camera.

Q: Where can I buy the Micro SD card?

A: At any electronic parts store where cameras are sold or online.

Q: Can I reuse the Micro SD card?

A: Yes, simply insert the Micro SD card into a larger SD card adaptor. Then place the SD card into a portable memory card reader or through computer, view your videos and select those you wish to erase.

Q: Will I need to replace the battery?

A: No, you will continue to recharge the Lithium-Ion battery which will give you many years of service.

Q: Can I bring my camera somewhere for servicing in the event it malfunctions?

A: There are no official service centers. However if your camera is still under warranty, then contact the company that sold you the camera and request an exchange.