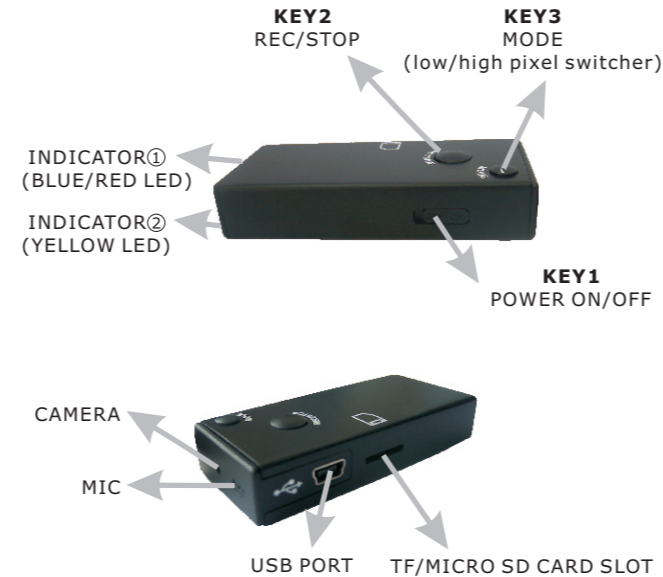


# EASY DV User Manual

## Where I need to use it

1. Taking personal video diary  
Portable Super mini DV, easy to record anything interesting in your personal life
2. Study tool for reviewing  
Recording the lectures/meetings with video and audio then you could review it later
3. Taking personal sport video  
Set your hands free to record anything, when you play favorite sports. Record the wonderful moment, which will not appear again
4. recording office meeting/interview/training  
Take such record for keeping in the archives, review it when you need.
5. Making professional hidden investigation for evidence
6. Home/personal security AV recorder

## Structure



## Quick Guide

1. How can I use Easy DV to record?

Step 1). Make sure the Micro SD card is inside and switch ON/OFF to on(key1).

Step 2). Stand by status: Press REC/STOP (key2) for 3 seconds, a weak red changes to a strong red (indicator1).

Step 3). Choose record mode

Low pixel (320*240)	High pixel (640*480)
Undo key2 and press again	Undo key 2, press MODE(key3) then key2

Indicator①: Twinkle blue ↓ Now recording! ↓ Twinkle blue ↓ Step4): Stop by pressing key2 ↓ Indicator②: Red ↓ record finished!	Indicator①: twinkle blue now recording! ↓ Indicator②: yellow ↓ Stop by pressing key 2 and then key 3 ↓ Just red in indicator? ↓ record finished!
---	--

2. How to play record: plug "PC" port into Easy DV and USB port to Computer, like U-disk and you can view it.

Attention: Do not move ON/OFF(key1) when recording, otherwise all records will lost.

3. How to charge Easy DV?

Put ON/OFF(key1) to on, plug "PC" port into Easy DV and USB port to computer, indicator? will show a twinkle red for about 2-3 hours. When the charging is finished, it shows a steady red.

## Frequently Asked Questions

Q1: How can I know the memory of micro SD card is full?  
A: When the indicator① shows red&blue at the same time, it is full. Easy DV will now stop recording automatically.

Q2: Why the red indicator is twinkling, when it is not in charging?  
A: It means the battery is low. You need to charge it.

Q3: Where can I buy the micro SD card?  
A: At any electronic parts store where cameras are sold or online. Brand Transcend or Kingmax is preferred, but Kingston is not recommended.

Q4: Why press MODE button, no light indicator?  
A: Please draw out the micro SD card, and press MODE button in stand-by status, if it works, then it is good. Maybe your micro SD card is not compatible, please change Micro SD. If not, please contact your dealer for help.

Q5: How long can it record with a 2GB micro SD card?  
A: When in low pixel mode, it can record about 3-4 hours until memory is full;  
When in high pixel mode, it can record about 50 minutes until memory is full;  
However, the battery could last for about 1.2 hours.

Q6: Why there's no video records after I turn off the camera?

A: If you turned off the camera when it is still recording, there'll be no records. Please save the recording by press REC/STOP(key2) button before turn off the camera.

Q7: How to do if I need to charge it and make record at the same time?

A: Plug DC 5V port into EZDV and USB port into computer. Follow every step as per QUICK GUIDE.

Q8: Why it always show USB camera when I connect it to PC?

A: When it is in high pixel mode and you forget to switch the MODE to let yellow indicator ② off, it'll be USB camera. Please do as per QUICK GUIDE "high pixel mode" again.

## Specification

View Angel: 64.4 degrees

Video Format: AVI

Frame Rate: 25fps (Low light will make low FPS)

Video Resolution: 640X480 high pixel

320X240 low pixel

Video File Size: About 40MB/minute(high pixel)

About 10MB/minute( low pixel )

Audio: Support

PC Camera Pixels: 1.3 mega pixels

Micro SD Card Support: 256MB to 2GB

Battery: 390MAH Lithium-ion battery

Consumption Current: 110mA

Operating Temperature: 0-65 °C / 32-149 °F

Dimention: 65X29.3X12.5 mm

Weight: 26g

## Micro SD card

Please insert a micro SD card before using Easy DV. Brand Transcend or Kingmax is preferred, but Kingston is not recommended.

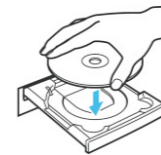


It supports 2GB SD card at most.

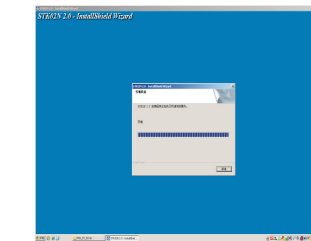
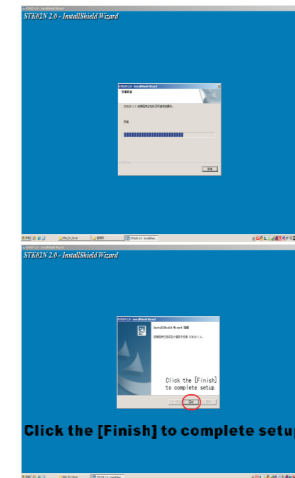
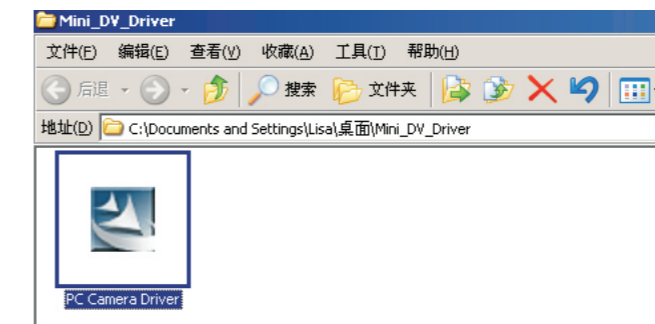
If you feel difficult to insert the SD card, a toothpick or a normal pen could help.

## PC CAM

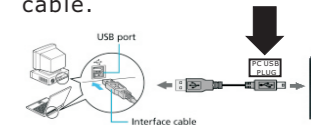
Please install the software provided before using it as a PC camera.  
Software installation:



Double-click the [PC Camera Driver.exe] icons in the CD-ROM window.



When the installation is complete, and click [Finish]. Connect to PC with USB cable.



- Press the ON/OFF button to ON.
- Press REC/STOP (key2) for 3 seconds, a weak red changes to a strong red (indicator1).
- Undo key 2, press MODE(key3), the yellow indicator will turn on, it is in high pixel mode now.
- Plug "PC" port into Easy DV&USB port to computer.
- You' ll see USB camera remind, open "my computer", you can see Standard Camera. It's working now!