

USER MANUAL

NetShare NAS Enclosure

Model : ME-747AN-S

3.5" SATA to 10/100Mbps LAN/USB2.0 Host



CONTENTS

1. Introduction	5
2. Main Features	6
3. Product Overview.....	6
3.1 Product Contents	6
3.2 Minimum System Requirements.....	7
3.3 Take a look to the ME-747AN-S.....	8
3.4 Starting to Assemble	9
4. Starting NetShare ME-747AN-S	10
4.1 Install NAS Program	10
4.2 Start First Setting	11
5. Using NetShare NAS Service Manager	17
5.1 Access NAS Service Manager	17
5.2 Account Manager	18
5.2.1 How to Create/Delete a new group	18
5.2.2 How to Create/Delete a new user.....	18
5.3 Share Manager.....	19
5.3.1 How to create a new share folder	19

5.3.2 How to Modify/Delete the share folder	20
5.4 Storage Manager	20
5.4.1 How to Mount/Unmount USB devices on USB host	20
5.4.2 How to Create/Delete partition of attached USB storage devices	21
5.4.3 How to set the partition type of attaching USB device.....	22
5.4.4 How to setup USB printer.....	23
5.5 System Manager	24
5.5.1 About Network/Time Configuration.....	24
5.5.2 How to change administrator's password.....	25
5.5.3 How to restart ME-747AN-S.....	25
5.5.4 How to Upgrade Firmware.....	25
5.5.5 About System info / Web Log	25
5.6 Service Manager.....	26
5.6.1 The settings of FTP Manager	26
5.6.2 The settings of SAMBA Manager.....	28
5.6.3 The settings of B.T. Manager.....	29
6. Access User Function	29
6.1 Using BT (BitTorrent) function.....	29
6.2 About File Manager.....	31

6.2.1 Home Directory.....	32
6.2.2 Quick Search File/Folder	32
6.2.3 Changing the name or type of file/folder	33
6.2.4 Network Neighbor Function	33
6.2.5 GUI Style Settings	34
6.3 Web Album.....	35
6.3.1 How to Create/Modify/Delete a folder of Web Album	35
6.3.2 Starting to upload the photos into Web Album.....	35
7. Use File Browse to manage ME-747AN-S.....	37
7.1 By using NAS Start Program.....	37
7.2 By using MY Network Places	39
8. Easy Backup Function of ME-747AN-S.....	43
9. Reset ME-747AN-S.....	51
10. FAQ.....	52

Safety Warning

Please read this user manual carefully before using this product.

1. Always unplug the power cord before assemble Hard Drive.
2. Do not use a power adapter with different voltage rating. It will damage this product.
3. Keep this equipment away from humidity or any type of moisture.
4. Do not drop or shack the device.
5. Do not press or put any weight on this device.
6. Do not use any alcohol, thinner or benzene to clean this device.

1. Introduction

NetShare NAS Enclosure - ME-747AN-S , based on Linux , is specifically designed for small office and home office needs. It is an easy-to-use storage server that allows the dedicated approach to store and share data on a network. NetShare also supports FTP and BT (BitTorrent) for easy file download. With the 2 USB 2.0 hosts , you can connect to flash disk , digital camera and other USB storage disks for storage share and it also supports the USB printers in the shared network.

2. Main Features

Fits 3.5" SATA/II HDD

10/100 base-TX Auto MDI/MDI-X

USB 2.0 Host interface.

File Server

SAMBA Server

FTP Server

Web Album

BT download function.

Backup Server

Printer Server

3. Product Overview

3.1 Product Contents

ME-747AN-S x 1 、 LAN Cable x 1 、 Power adapter x 1 、 Screws 、 QIG x 1 、 Installation CD x 1

3.2 Minimum System Requirements

Windows® NT/2000/2003 server/XP x86 / XP 64 bit / Vista X86 / Vista 64 bit/Linux/Unix

233 MHz Pentium® II or above

64 MB RAM (128 MB recommended)

USB 1.1 Port (USB 2.0 recommended)

CD-ROM drive for installation

Mac® OS

Mac OS X 9 or above

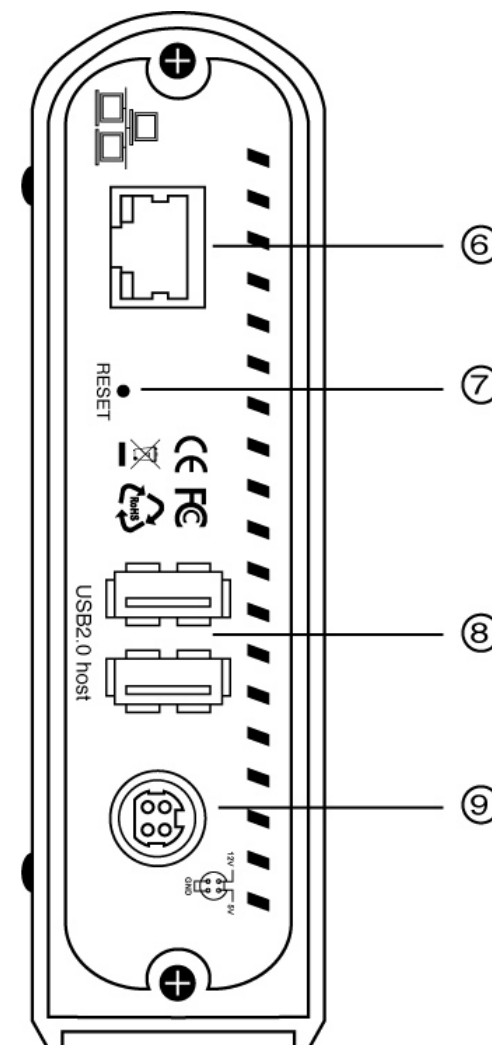
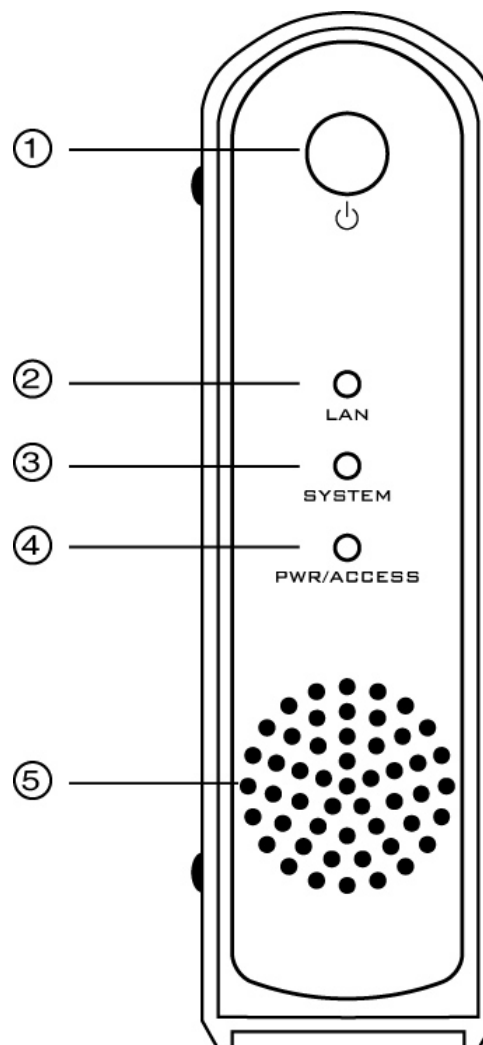
128 MB RAM (256 MB recommended)

USB 1.1 Port (USB 2.0 recommended)

CD-ROM drive for installation

3.3 Take a look at the ME-747AN-S

- ① *Power Button*
- ② *Network Mode Indicator*
- ③ *Starting Indicator*
- ④ *Power/Access Indicator*
- ⑤ *Cooling FAN Aperture*
- ⑥ *LAN Connector*
- ⑦ *Reset Button*
- ⑧ *USB2.0 Host Port*
- ⑨ *Power Connector*



3.4 Starting to Assemble

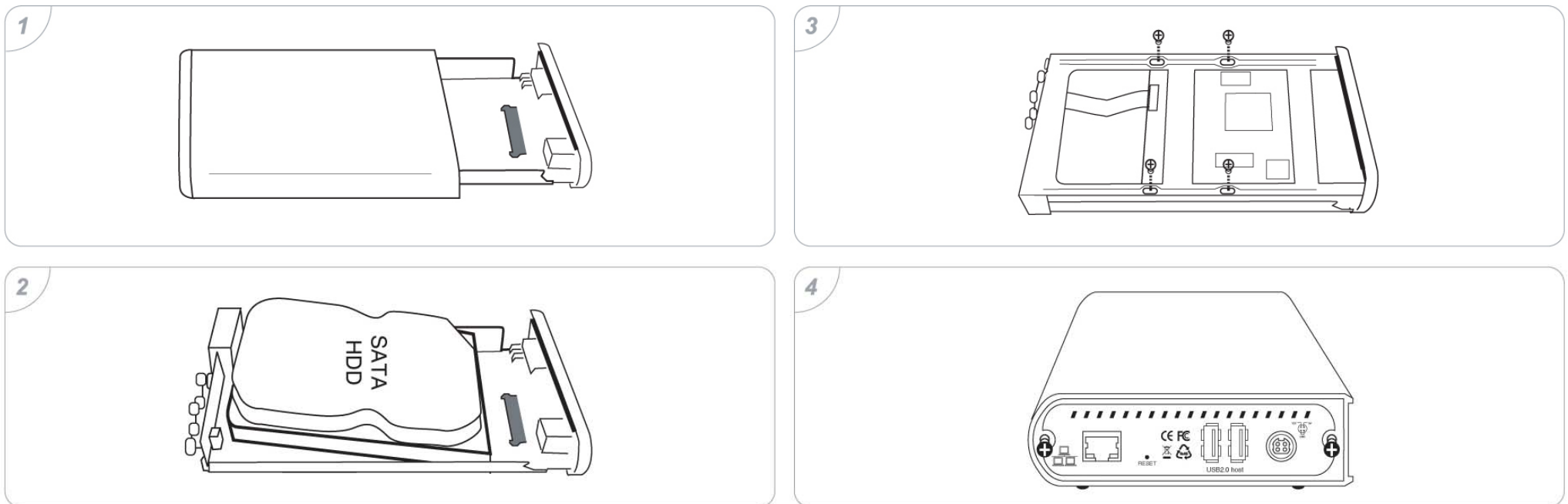
Before installing HDD into ME-747AN-S, please prepare a cross screwdriver to assemble them.

Step1. Open the enclosure, and put out the PCB tray.

Step2. Insert SATA HDD to SATA connector of PCB.

Step3. Put on the screws and tighten SATA HDD.

Step4. Exactly put the PCB and HDD set into the tray, and combine the case with screws.



4. Starting NetShare ME-747AN-S

4.1 Install NAS Program

Step1. Find “NAS Start Program V1.0” from CD and double click the setup.exe.

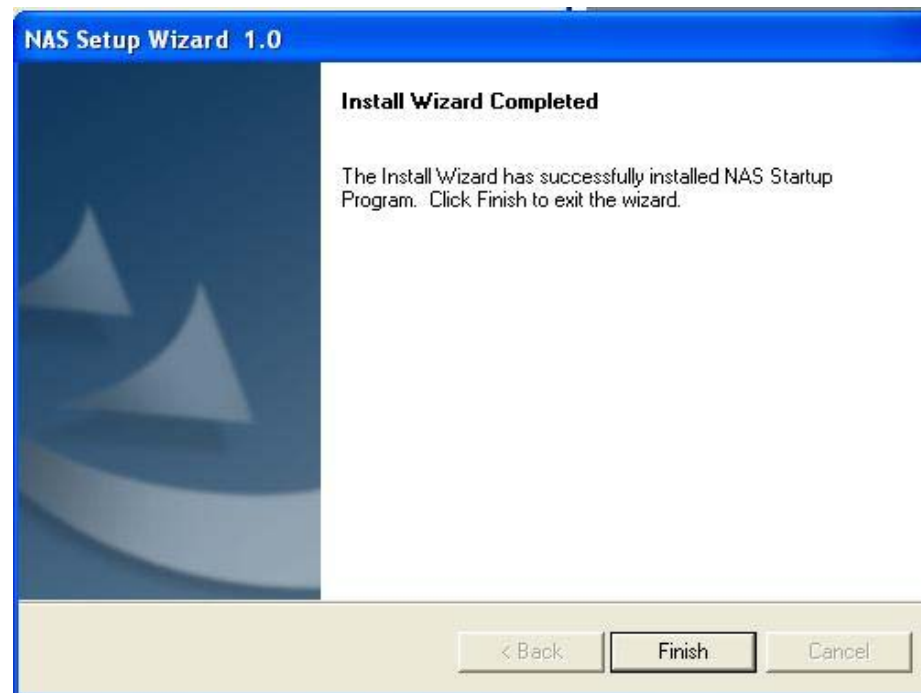
Step2. **NAS Setup Wizard** window will pop up. Click the **Next** to go on.



Step3. Next page is the license agreement, please click “**I Agree**” and click **Next** to go on.

Step4. The **Install List**, **Choose Source Location**, **Installing Components List**, **Installing**

Status, Install Wizard Completed will pop up step by step, and just click **Next** to go on.

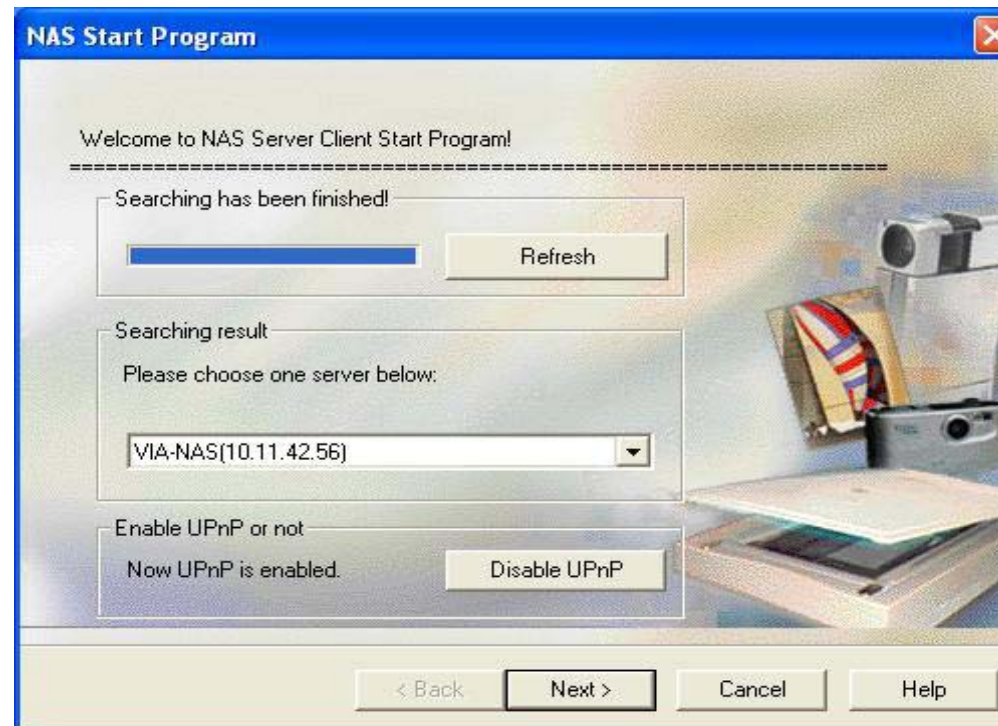


4.2 Starting First Setting

Note: 1. Before starting setup application, please make sure that ME-747AN-S is ready and connected to computer or local network environment.

2. Please backup necessary data of the embedded HDD first, since this starting procedures will automatically format the hard drive to the new EXT3 system.

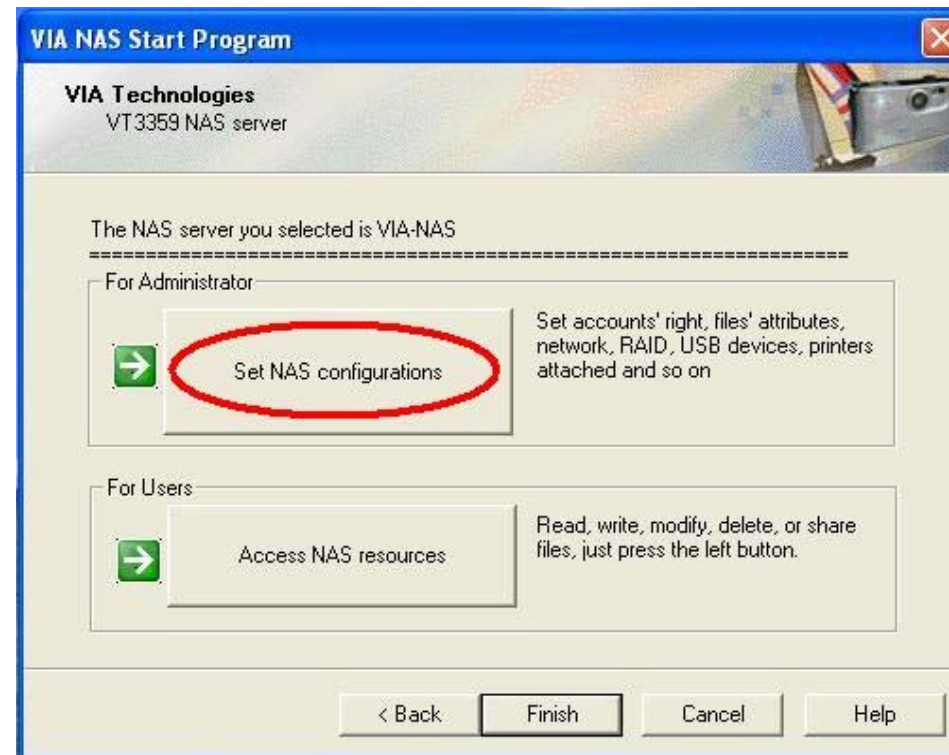
Step1. Double click **NAS Startup icon (below)** on the desktop , and **NAS Start Program** will pop out.



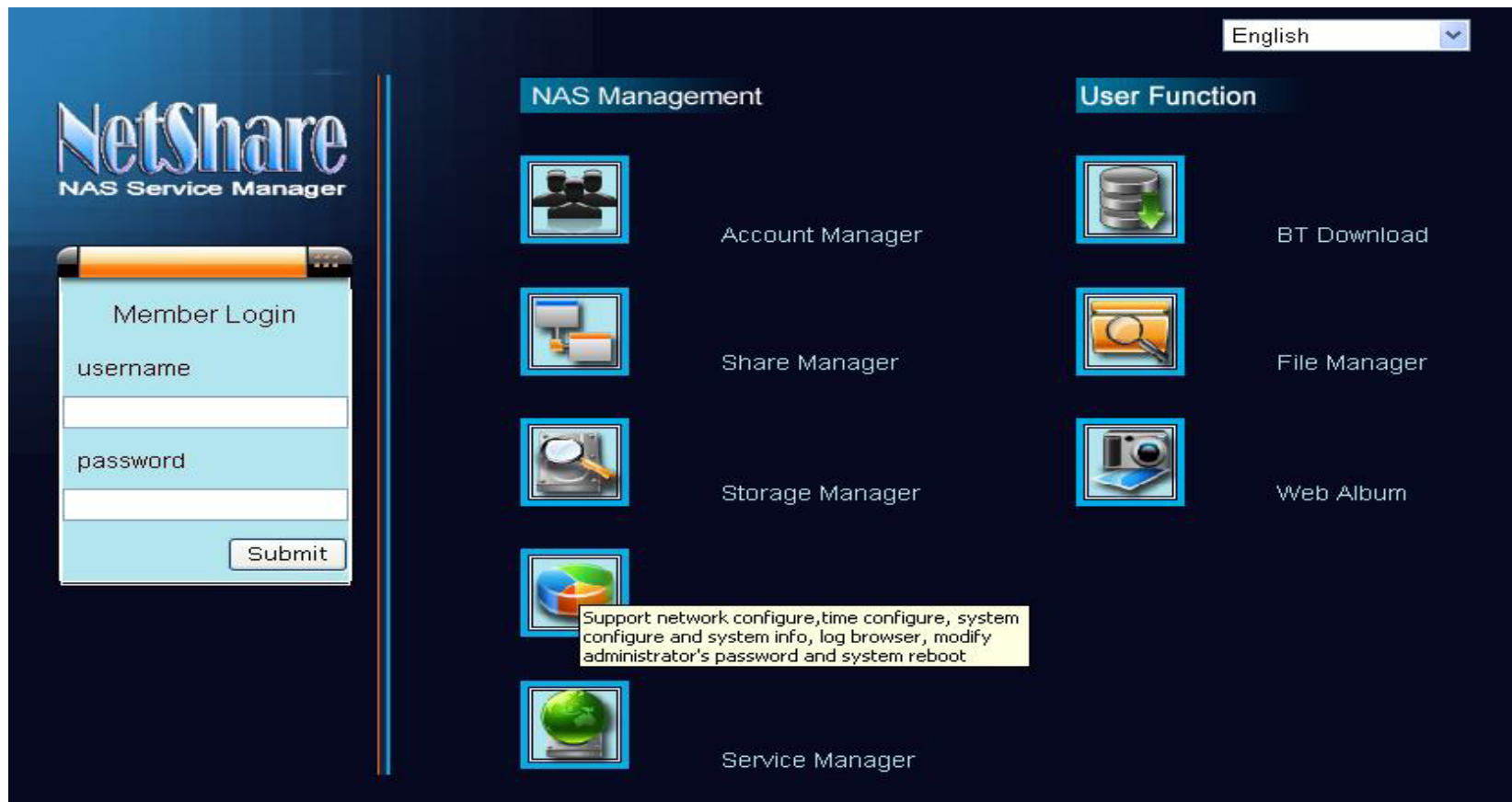
Step2. Click **Refresh** to search the attached ME-747AN-S device, the specific IP address of ME-747AN-S will be shown on this application in few minutes. Please click the **Next** to configure NAS settings.



Setp3. Click the **Set NAS configurations** to access the **NAS Manager** page.

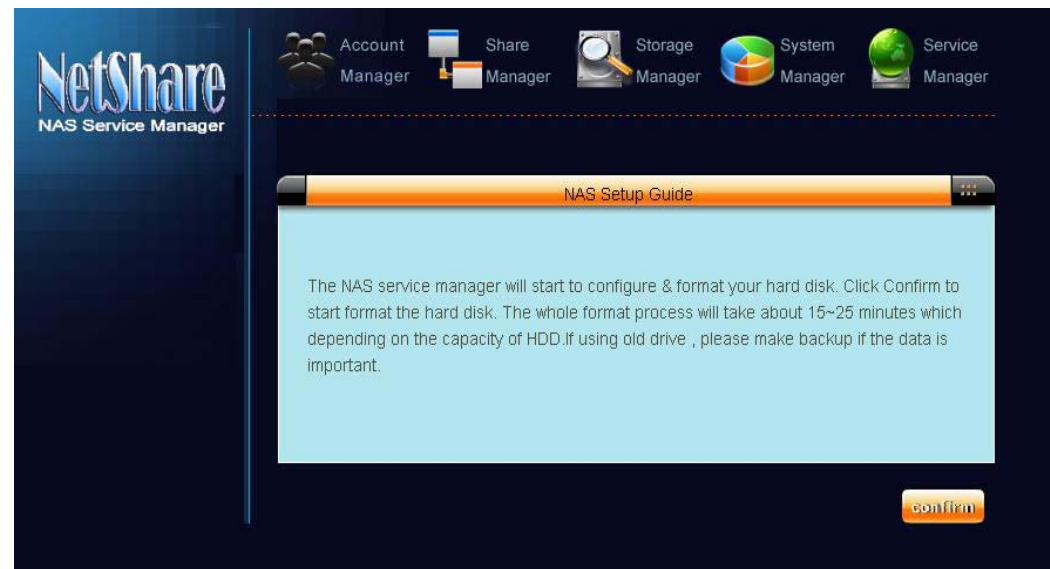


Setp4. Type the default “**admin**” as the **username** and **password** in the blanks and click **Submit**.

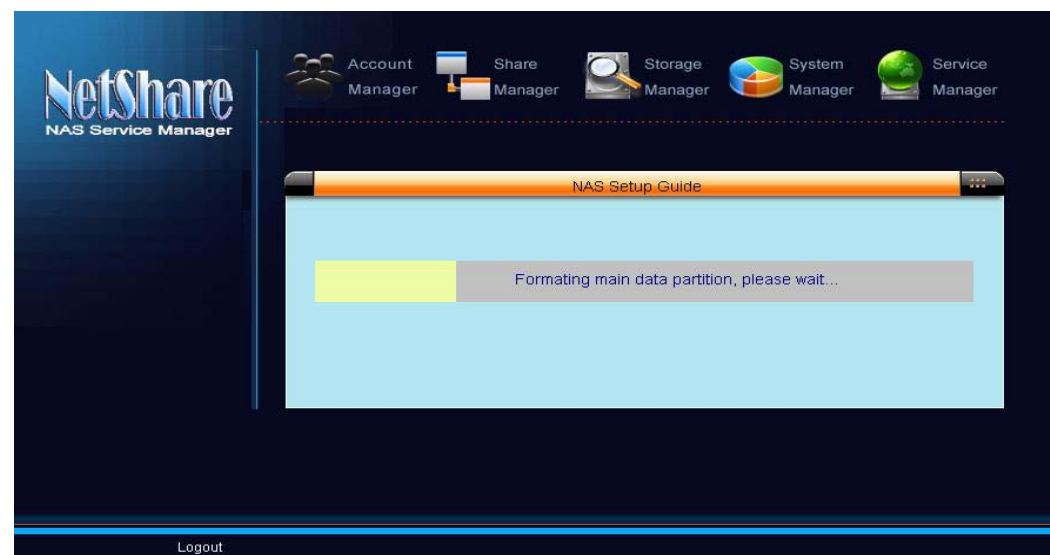


Step5. Click **Confirm** to start format the HDD in ME-747AN-S. The whole format process will take about 15~25 minutes which depending on the capacity of HDD.

Note : The hard drive will be formatted during this step , if using old drive , please make backup if the data is important.



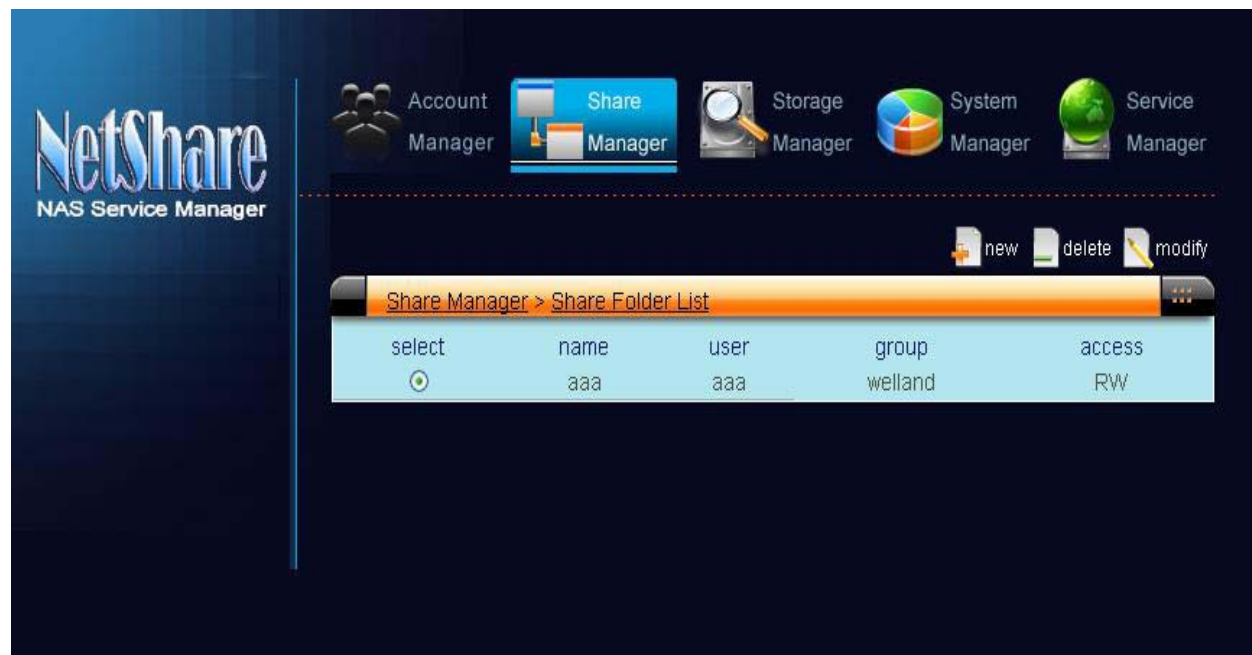
Step6. While the progress bar reaches 100%, you can start to use ME-747AN-S.



5. Using NetShare NAS Service Manager

5.1 Access NAS Management

User must fill in default **username** and **password** of administrator in “**Member Login**” dialog window. Only the administrator can run the **NetShare Manager** system. It includes **account manager**, **share manager**, **storage manager**, **system manager** and **service manager** functions.



The default username and password of administrator is as below.

Username : **admin**

Password : **admin**

Note: If you want to leave the NetShare Manager , just click the “Logout”.

5.2 Account Manager

You can add or remove **users** and **groups**. You have to create a group before adding any user account.

5.2.1 How to Create/Delete a new group

Step1. Click the **new** icon.

Step2. Enter a new group name and click **Confirm**. It's done.

Step3. Click the **Delete**, and the confirmation message will pop out.

Step4. Click the **Yes**.

5.2.2 How to Create/Delete a new user

Step1. Click the **new** icon.

Step2. Enter a new user name and password.

- Step3. Choose a specified group to join.
- Step4. Choose if the user would be a SAMBA user or not.
- Step5. Choose if the user would be a FTP user or not.
- Step6. Click the **Delete** icon, and select the user which you want to delete.
- Step7. Click the **Delete** icon again, and the confirmation message will pop out.
- Step8. Click the **Yes**, and then click the **Confirm** in the next page.

5.3 Share Manager

Share manager allows administrator to create share folders, modifying privileges (read, write, execute) of the shared folders to users and groups, deleting shared folders.

5.3.1 How to create a new share folder

- Step1. Click the **new** icon to enter into the setting page.
- Step2. Fill in a name for new file folder and choose the **Owner** and **Group**.
- Step3. Set the “**Read**” and “**Write**” authority that you want to share with the users, groups accessing.
- Step4. Click the “**Confirm**” to submit the settings, and you can find a new folder as below:

5.3.2 How to Modify/Delete the share folder

Step1. Choose the folder you want to modify and click the **modify** icon.

Step2. You can change the **Owner** and **Group** and accessing authority.

Step3. Click the **Confirm** to submit it.

Step4. Choose the folder you want to delete and click the **delete** icon.

Step5. Click the **OK** and **confirm** to submit delete.

5.4 Storage Manager

Storage Manager includes three portions:

Partition List: To check all information & format of the devices only from USB host.

Storage Device: To partition the devices which are attached via USB host.

Printer: To install the printers via the USB host.

5.4.1 How to Mount/Unmount USB devices on USB host

Step1. Choose the device to mount/unmount.

Step2. Click the **mount/umount** icon and **confirm**.

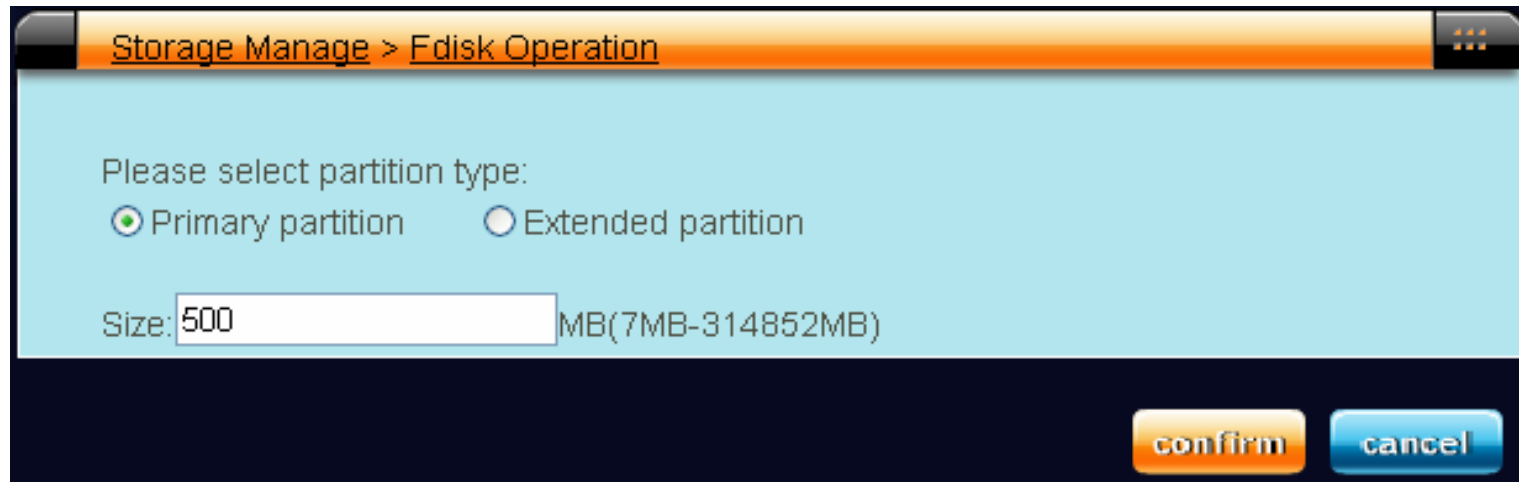


Note : *USB devices will be auto-mounted to ME-747AN-S by default setting. You can use the above information to mount USB devices manually if auto-mounted failed.*

5.4.2 How to Create/Delete partition of attached USB storage devices

Step1. Click the **partition** icon, and select a partition type.

Step2. Fill in the partition size, and **confirm** to submit it.



Step3. Select the target partition, and click the **delete partition** icon.

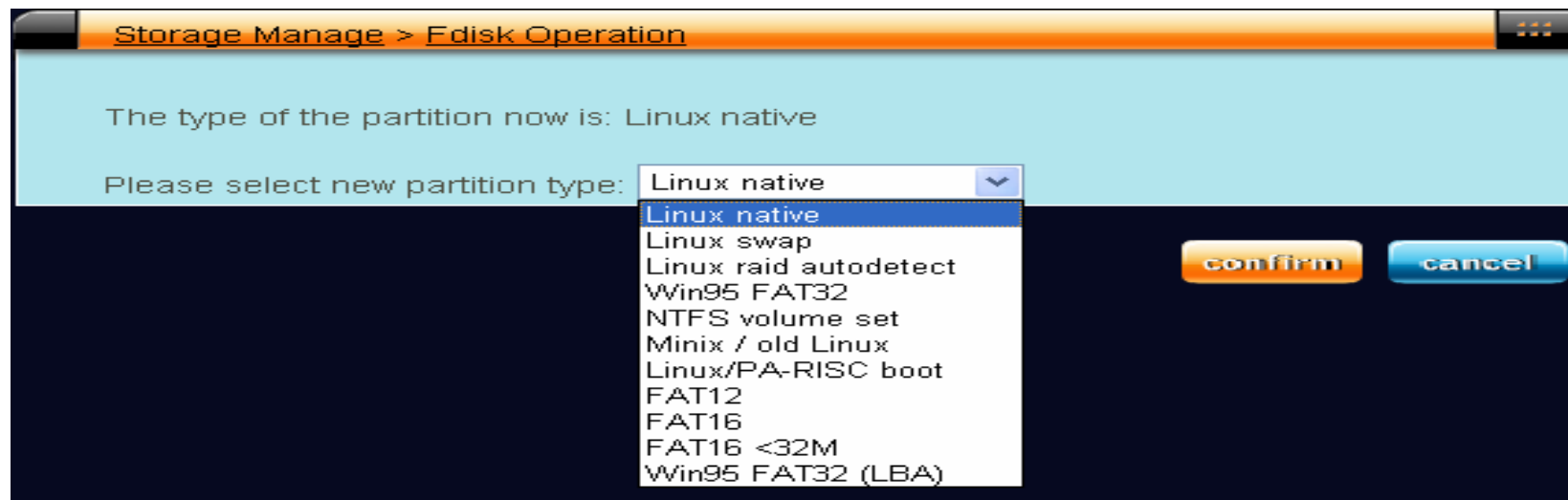
Setp4. Before deleting action, please make sure all files are well-backup.

Step5. Click the **Yes** and **Confirm** to submit it.

5.4.3 How to set the partition type of attaching USB device

Step1. Click the **Set type** icon.

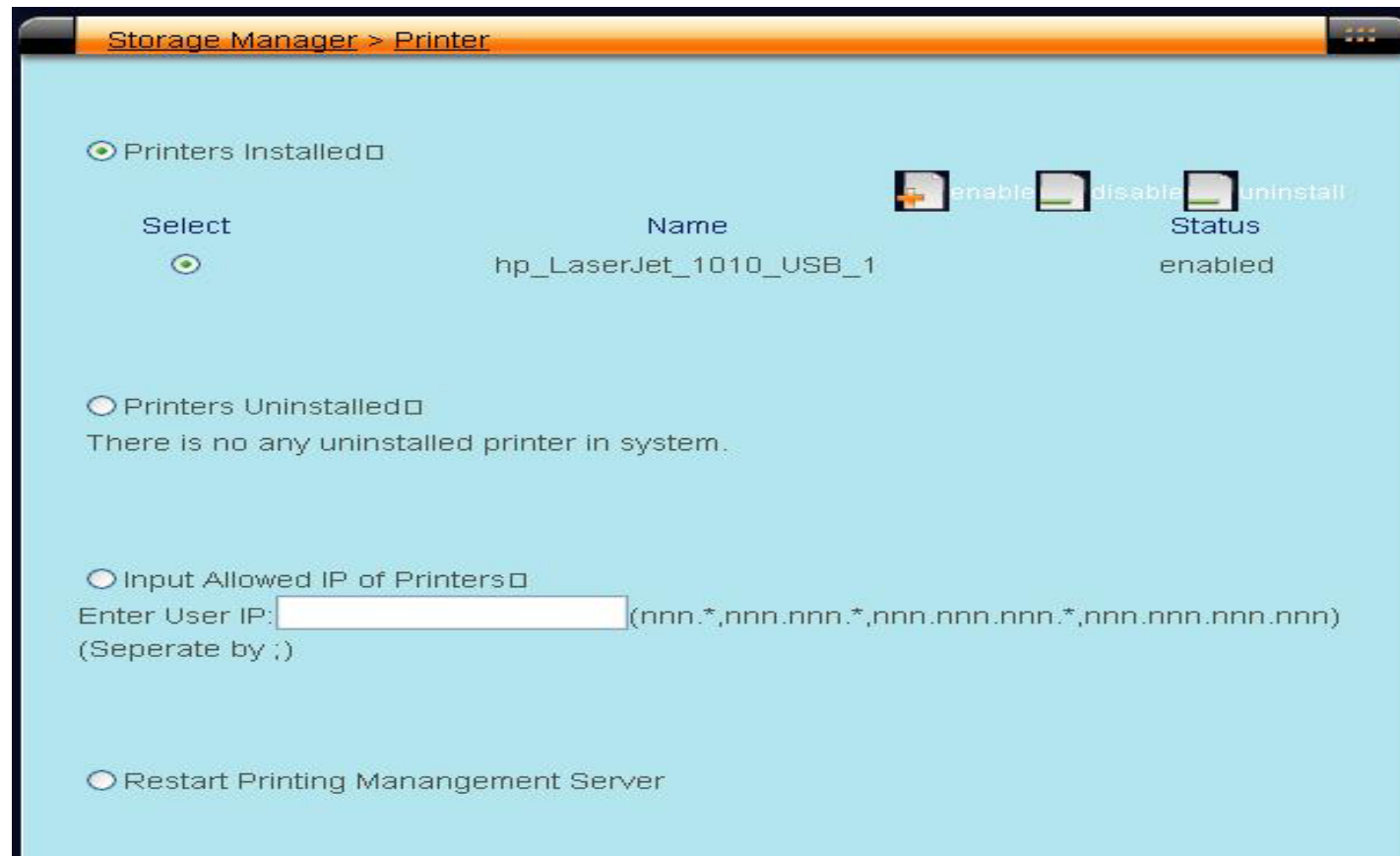
Step2. Choose the partition type that you prefer.



5.4.4 How to setup USB printer

- Step1. Connect the target printer to USB host of ME-747AN-S
- Step2. It will be auto-installed into the NAS.
- Step3. Install the manufacturer's printer driver to the PC.

Notice: 1. If you could not find printer, please fill in specific IP address of ME-747AN-S. Or, 2. Select the Restart Printer Management Server and click Confirm to submit it.



5.5 System Manager

5.5.1 About Network/Time Configuration

You can change the settings of **Host Name**, **Work Group name** and manually set the static IP address or using the dynamic IP address. User can also set up **Time zone**, **Time** and **Date** by using the calendar browser.

5.5.2 How to change administrator's password

Step1. Click **System Manager**, and click **System Config**.

Step2. Fill in original password and new one and click **confirm** to submit it.

5.5.3 How to restart ME-747AN-S

Step1. Click **System Config**.

Step2. Select **Restart NAS Server** and click **Confirm**.

Step3. ME-747AN-S's system will reconnect to PC or LAN environment automatically several minutes later.

5.5.4 How to Upgrade Firmware

Step1. Click **System Config**, and select **System Firmware**.

Step2. Click **Browse** to choose firmware file.

Step3. Click **Confirm** to start upgrading firmware process.

Step4. After upgrade process is completed, it will be back to the NAS manager page.

Please power off and then power on ME-747AN-S to enable the new Firmware.

5.5.5 About System info / Web Log

All detailed system info and log information of ME-747AN-S can be seen here.

System Manage > System Information

Firmware Version
Firmware version: 0.2 Release Date: 2007-09-01

Kernel Information
VIA-NAS 2.6.10_dev-VT8610 unknown

Network Parameters
IP Address: 10.11.42.80
Subnet Mask: 255.255.255.0
Default Gateway: 10.11.42.253

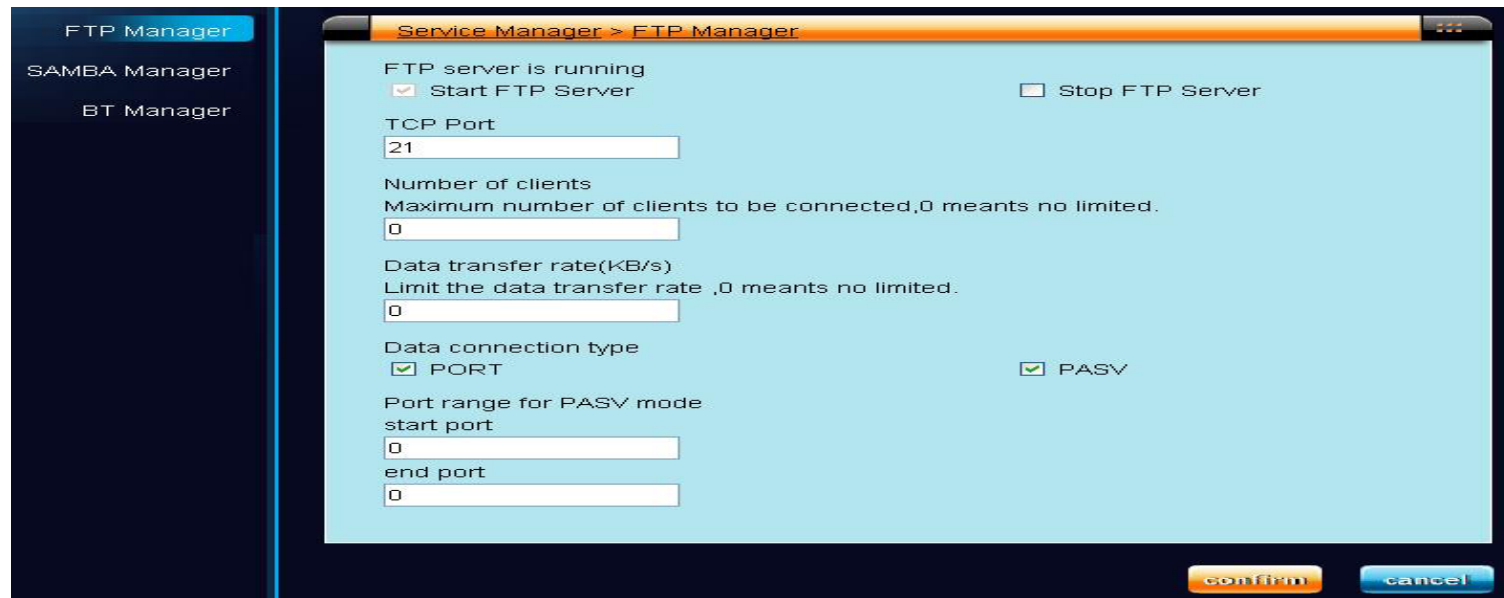
Powerup Time Information
11:14:16 up 16:55, load average: 0.00, 0.00, 0.00

Storage Status

Filesystem	1k-blocks	Used	Available	Use%	Mounted on
/dev/mtdblock1130048	60376	69672	46%	/	
tmpfs	62996	8	62988	0%	/tmp
/dev/mtdblock1130048	60376	69672	46%	/dev/.static/dev	
none	10240	2524	7716	25%	/dev
tmpfs	62996	0	62996	0%	/dev/shm
none	62996	0	62996	0%	/dev/shm
none	62996	36	62960	0%	/var/run
tmpfs	62996	8	62988	0%	/tmp
/dev/sda3	2007643	32912	1872719	2%	/web/www/photo
/dev/sda1	237992189	420540	225479124	0%	/home

5.6 Service Manager

5.6.1 The settings of FTP Manager



FTP Server : You can choose **Start** or **Stop** the FTP Server and click **Confirm**.

TCP Port : Default is **21**. Or you can set per your requests.

Number of clients : Set the numbers of connecting clients. (default 0 means no limitation.)

Limit the data transfer rate: Manage the bandwidth of the transfer rate.

PORT and PASV : This is communication protocol of FTP. If ME-747AN-S or user's computer connected to a firewall router or switch, we suggest to select these 2 functions.

PORT Range : If you choose PASV, you can also set the Port if needed. (default 0 means no limitation)

- Note:** 1. There is no number limit to set up user accounts of FTP server.
2. To get the best performance on FTP server function , we suggest the most is to logon 5 user accounts simultaneously.

5.6.2 The settings of SAMBA Manager

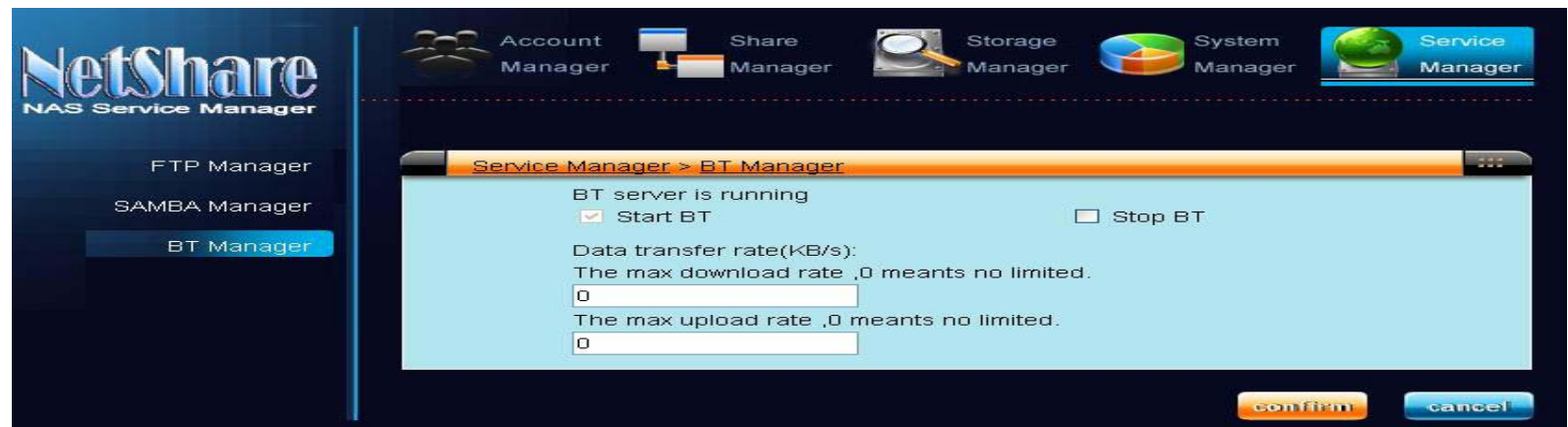


Enable or Disable : Administrator can set up “start” or “stop” of SAMBA server

Languages : English/Traditional Chinese/Simple Chinese are supported.

- Note:** 1. There is no number limit to set up user accounts of SAMBA server.
2. To get the best performance on SAMBA server, we suggest to logon 5 user accounts simultaneously.

5.6.3 The settings of B.T. Manager



Enable or disable : Administrator can set up “start” or “stop” of B.T. server.

Bandwidth Control : Administrator can set the data transfer rate while using B.T. download or upload.

6 Access User Function

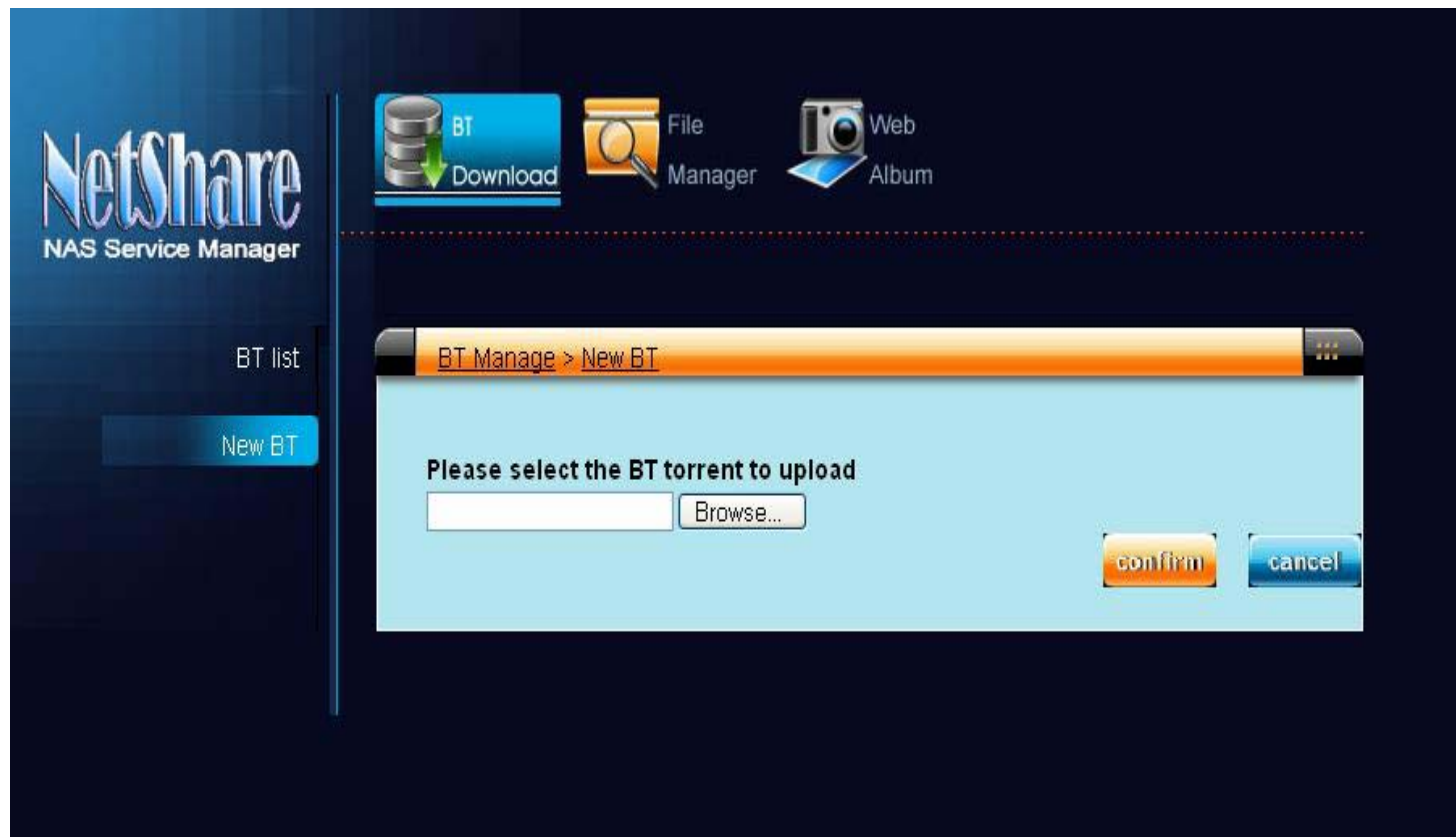
You have to apply a user name and password from administrator to login in ME-747AN-S. In this case, you can start to use the functions of **BT Download**, **File Manager** and **Web Album**.

6.1 Using BT (BitTorrent) function

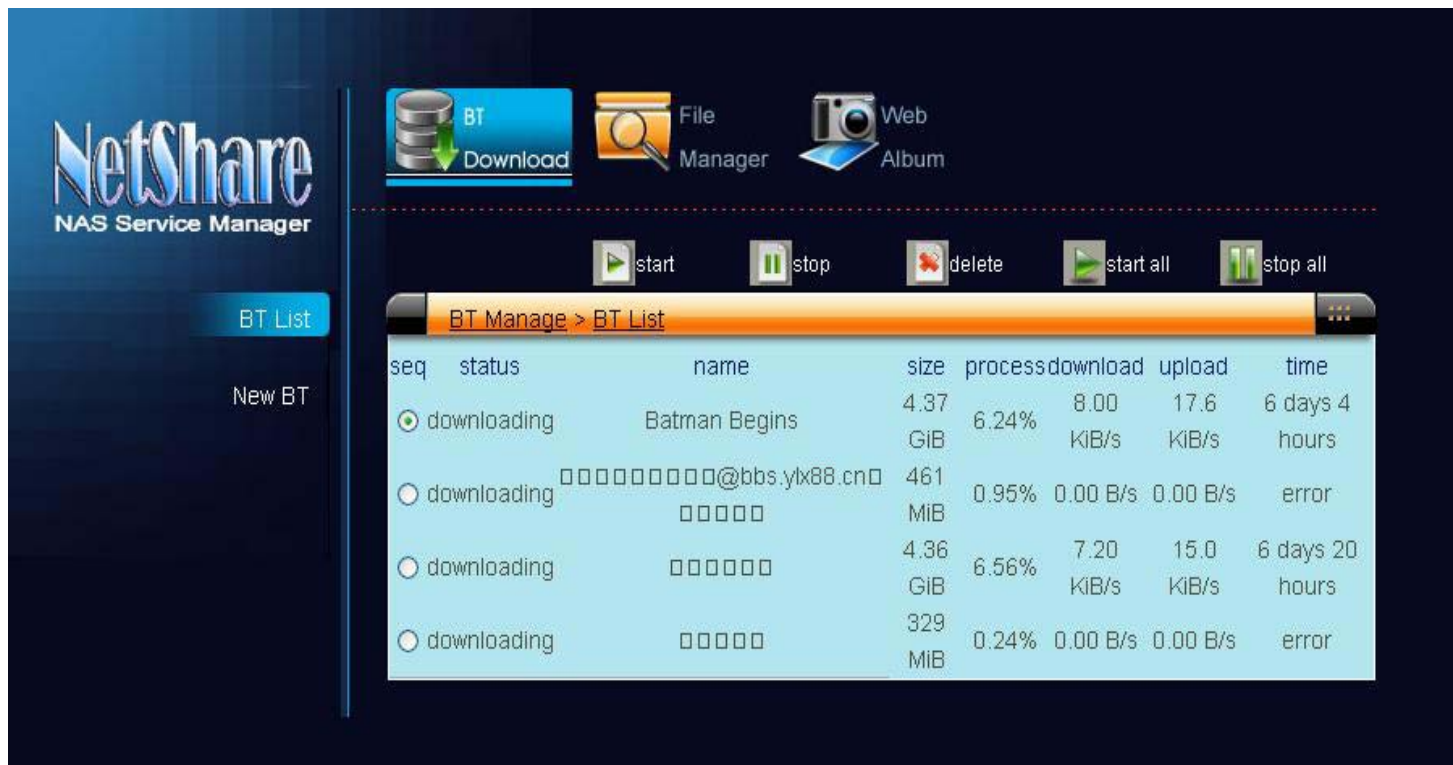
Step1. Click **New BT** icon.

Step2. Click **Browse** to upload the BT torrent in NetShare’s BT list.

Step3. Click **Confirm** to start the download.



In BT list, you can set up start/stop/delete to manage the torrent lists.



Start/Start all : Start downloading the files.

Stop/Stop all : Stop downloading the files.

Delete : Delete downloading torrent from the B.T. list.

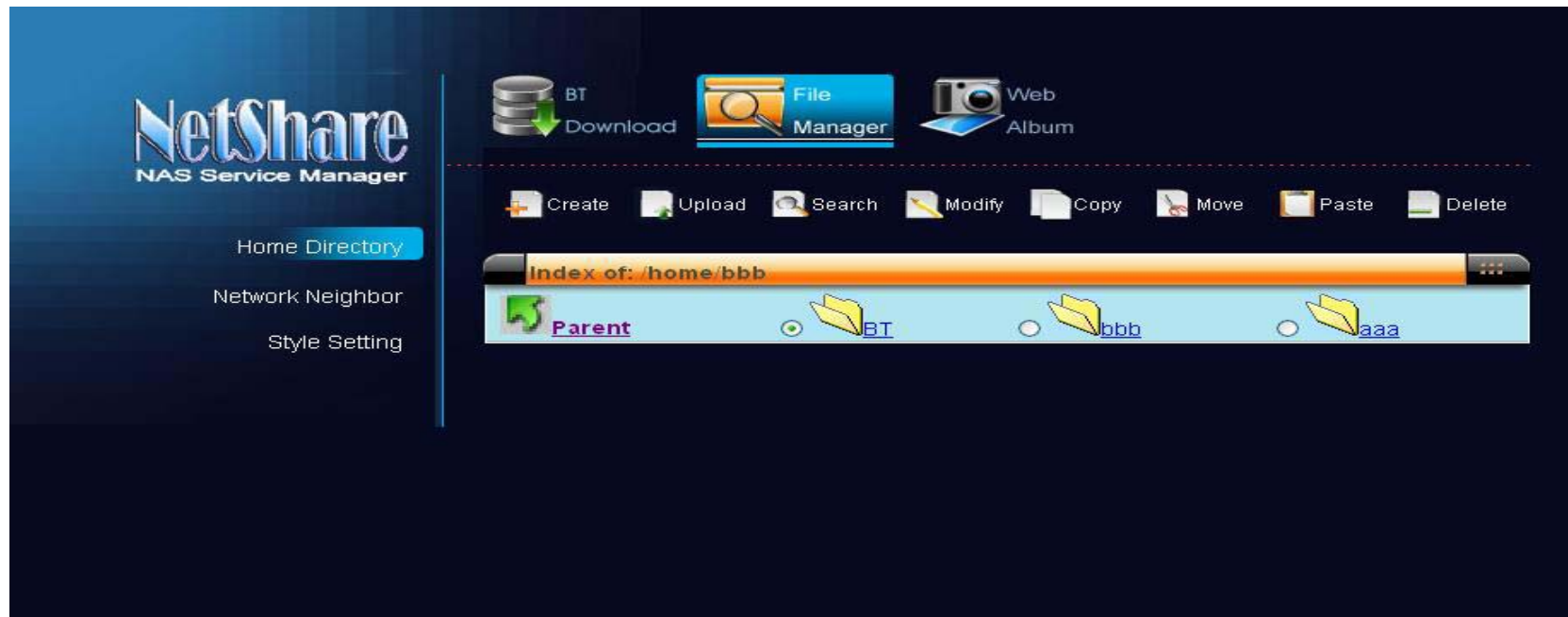
Note: 1. There is no number limit when downloading BT files.

2. To get the best performance of B.T download function, we suggest to put & download 5 BT files simultaneously.

6.2 About File Manager Function

6.2.1 Home Directory

It can help you to manage files/folders easily. Including **Create new folders**, **upload files**, **Search files quickly**...etc functions.

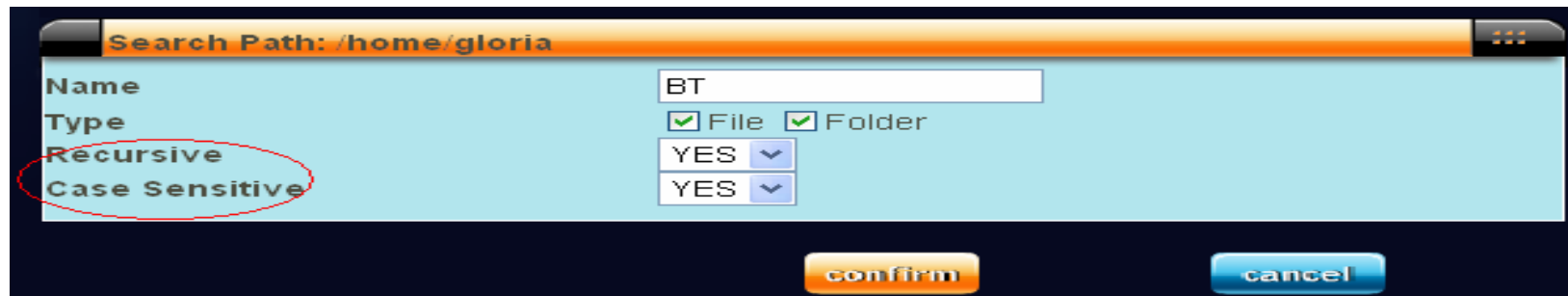


6.2.2 Quick Search File/Folder

You can find the target files or folders quickly by using this function. Please fill in the name of target file or folder and choose the additional searching options.

Recursive: Search file or folder by sequence.

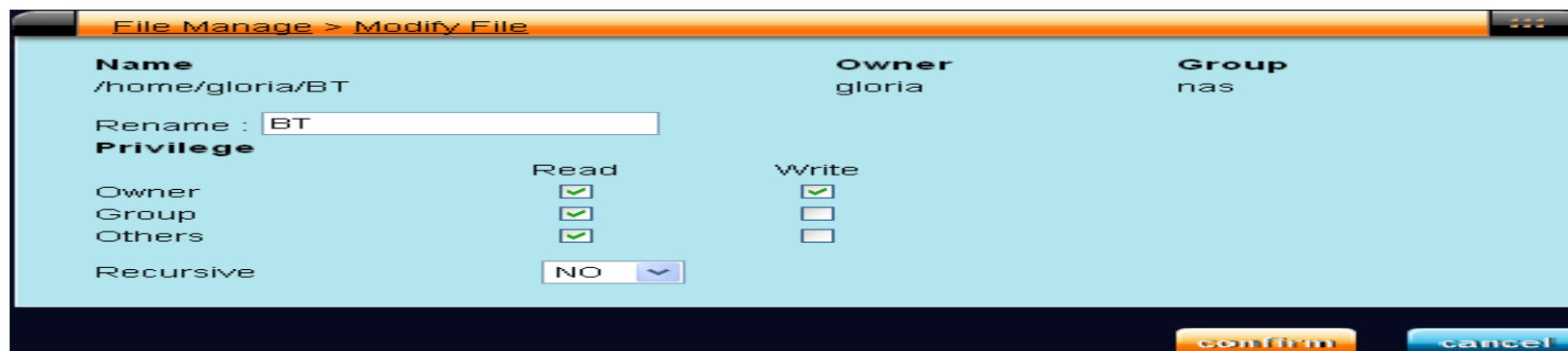
Case Sensitive: Search file or folder which matches the characters.



6.2.3 Changing the name or type of file/folder

You can choose **privilege** to set the authority of other groups.

You can choose **Recursive** to sort files.



6.2.4 Network Neighbor Function

You can access files of other users if they have shared files/folders.

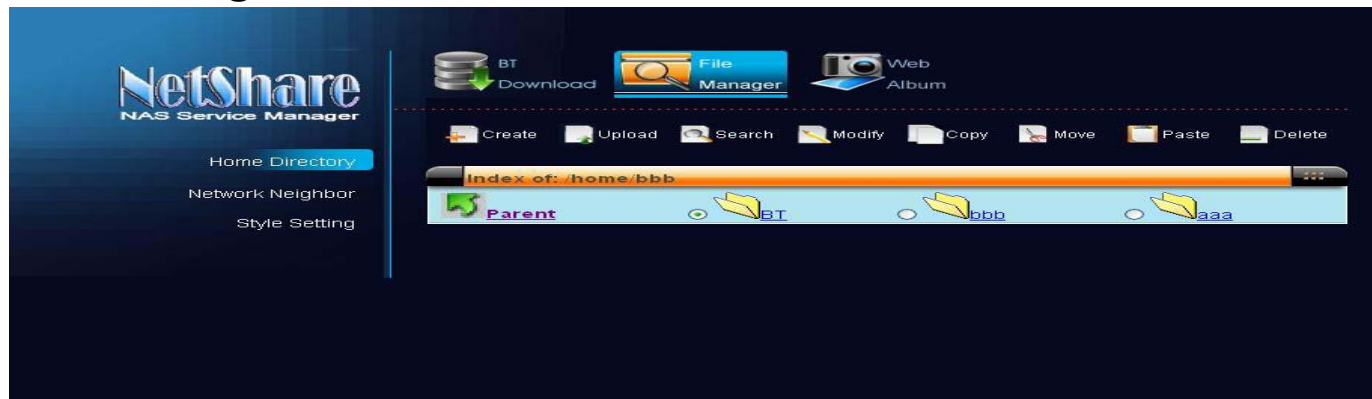
6.2.5 GUI Style Settings

NetShare manager supports two styles of GUI per user's preference :

List setting



Icon setting



6.3 Web Album

6.3.1 How to Create/Modify/Delete a folder of Web Album

Step1. Click **new** icon.

Step2. Fill in the **folder name** and choose the **privilege** of the setting.

Step3. Click **confirm** icon, and submit it.

Step4. Click **modify** icon.

Step5. Change **folder name** or **privilege**.

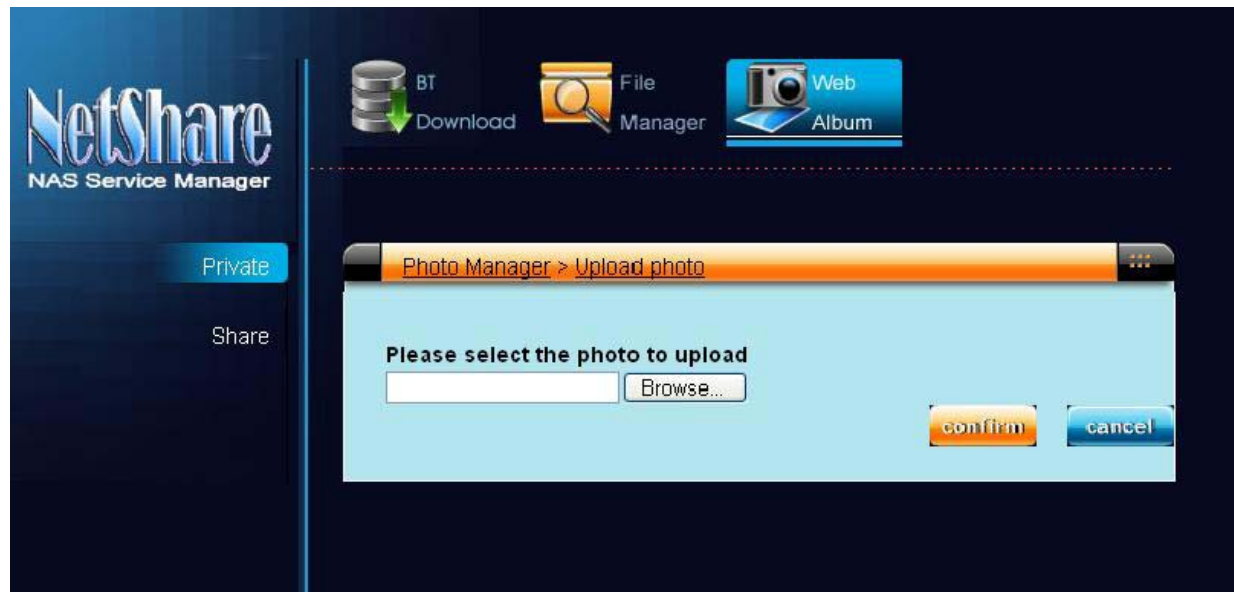
Step6. Click **confirm** icon and submit it.

Step7. Select a folder that you want to delete.

Step8. Click **delete** icon.

Step9. Click **confirm** icon, and submit it.

6.3.2 Starting to upload the photos into Web Album:

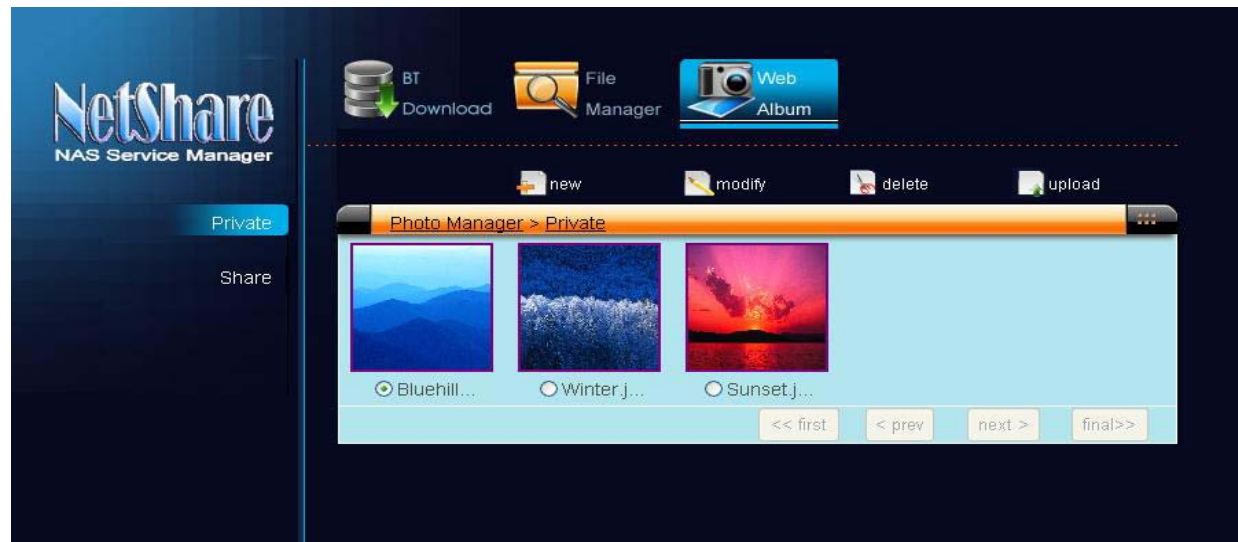


Step1. Click **upload** icon.

Step2. Click **browse** and select target photos.

Step3. Click **confirm** icon and submit it.

You can also click the target photos to enter into the play mode. NetShare manager supports **Manual-Play** or **Auto-Play** to browse the photos.

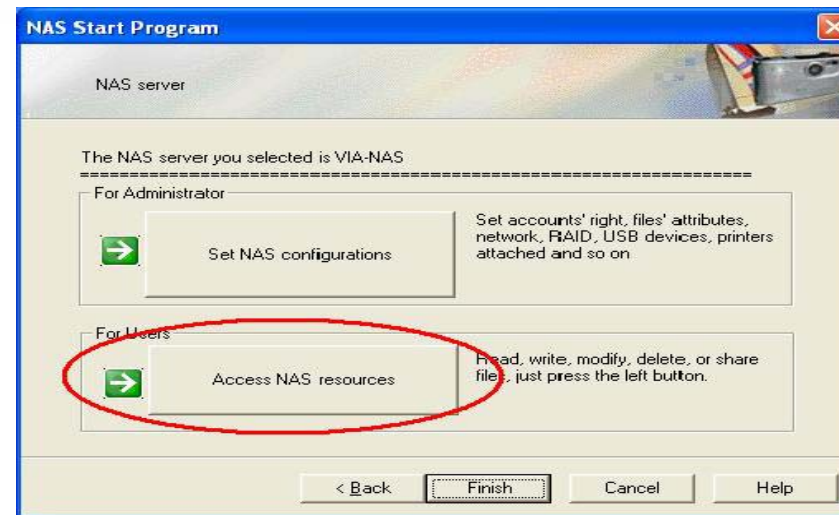


7 Using File Browser to manage ME-747AN-S

This function is convenient way to access ME-747AN-S directly without web browser. You have to request a user account and set up the privilege from administrator first.

7.1 By using NAS Start Program

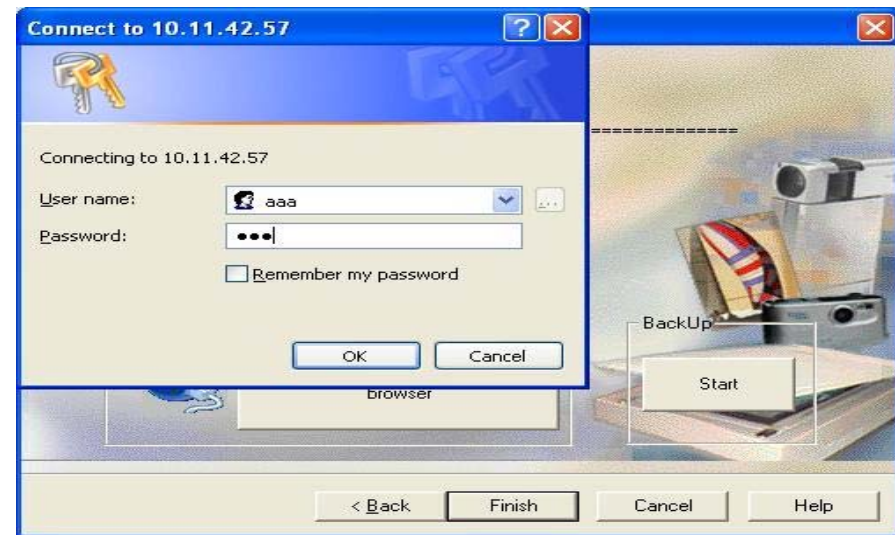
Step1. Execute the **NAS Start program** and click the **Next**.



Step2. Click **Access NAS resources**, and fill in **user name**.



Step3. Click **Enter** to fill in **password** and click **OK**.

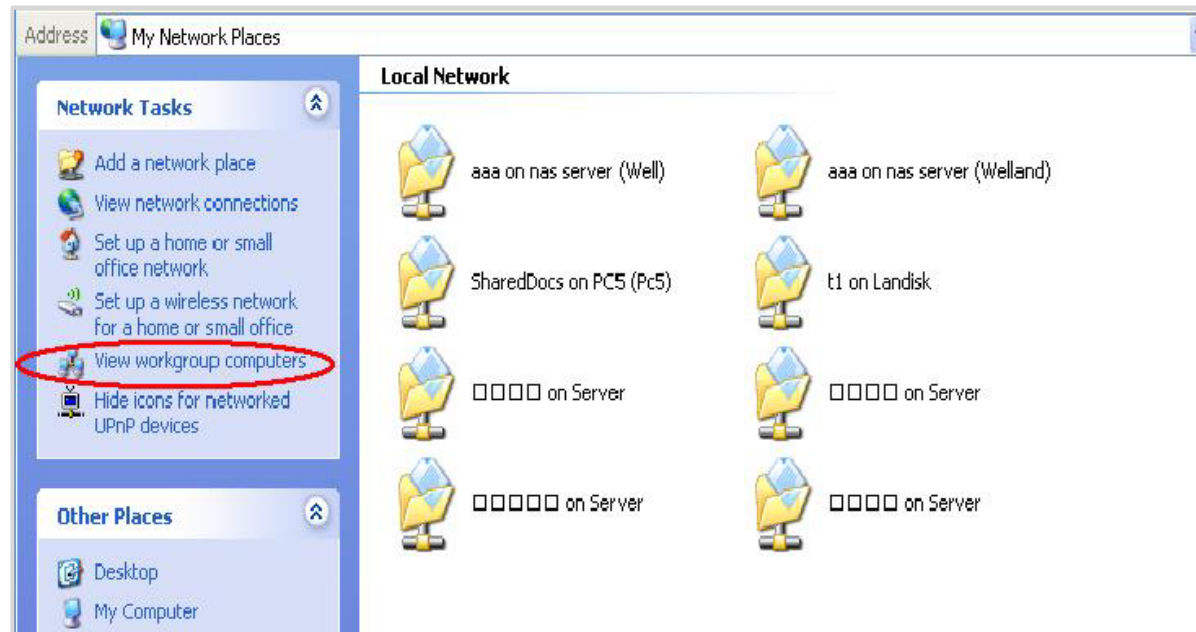


7.2 By using MY Network Places

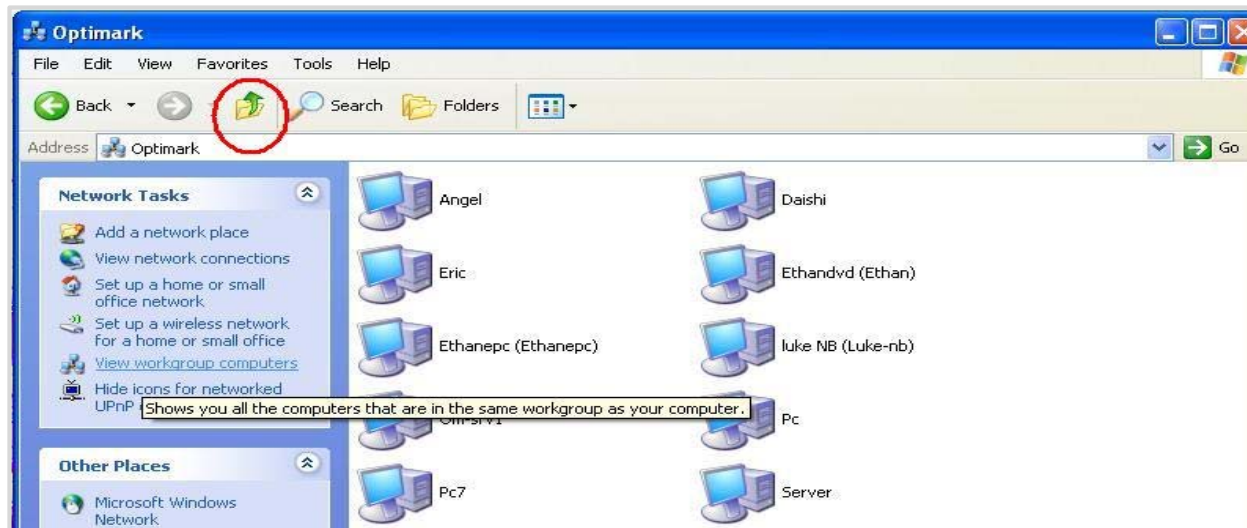
Step1. Click **My Network Places** on the desktop.



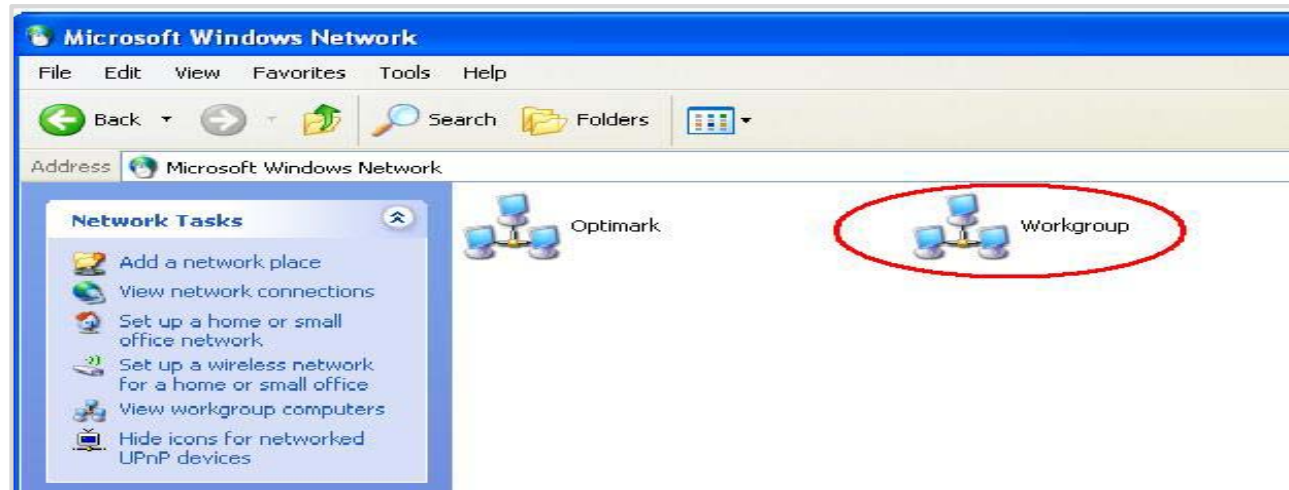
Step2. Please click **View workgroup computers**.



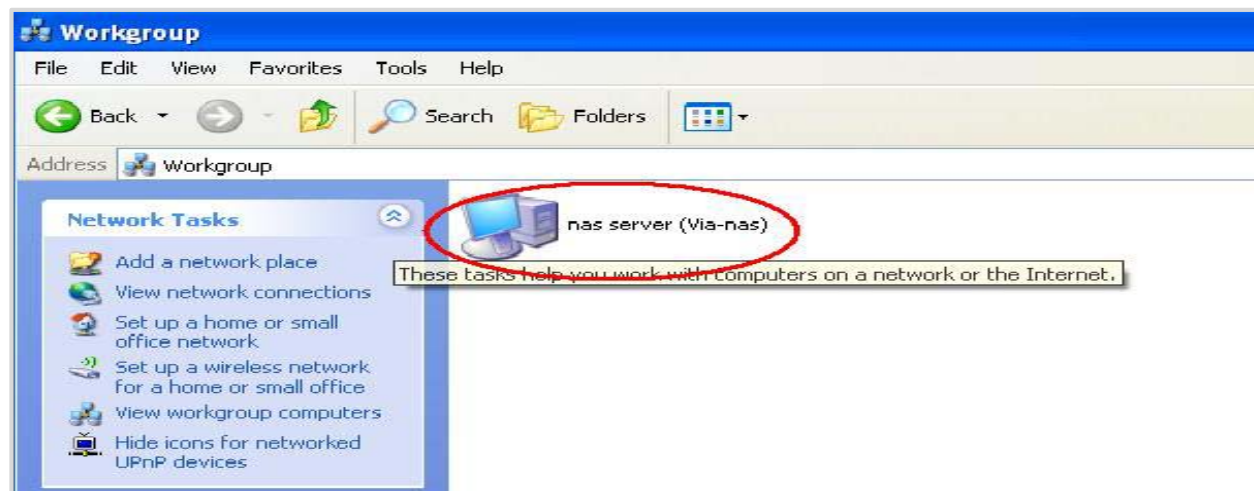
Step3. Click **undo** icon.



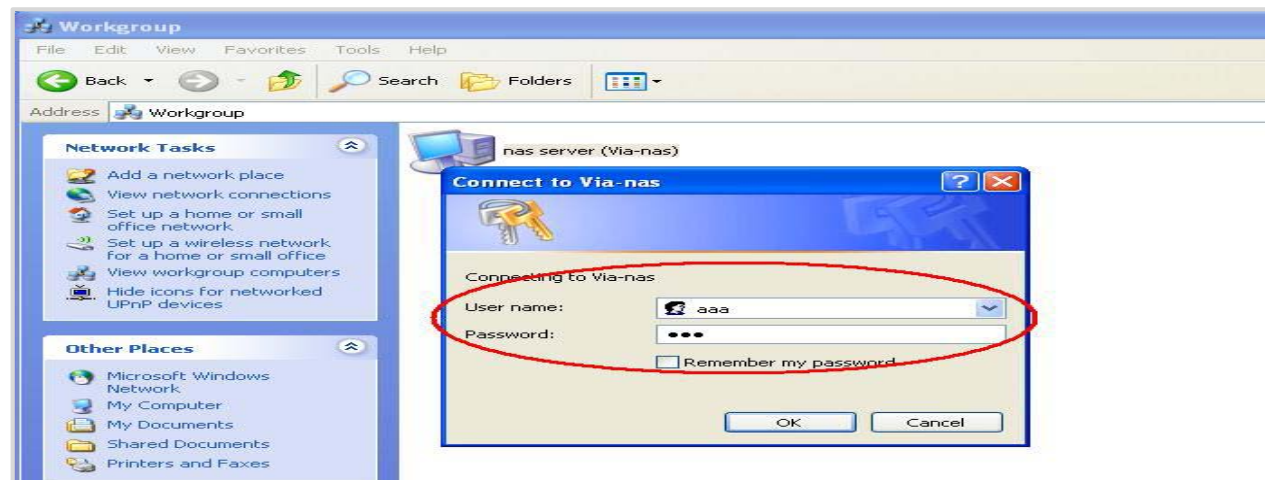
Step4. You can find the workgroup of ME-747AN-S, and double click it.



Step5. Click the **nas server** to login in.

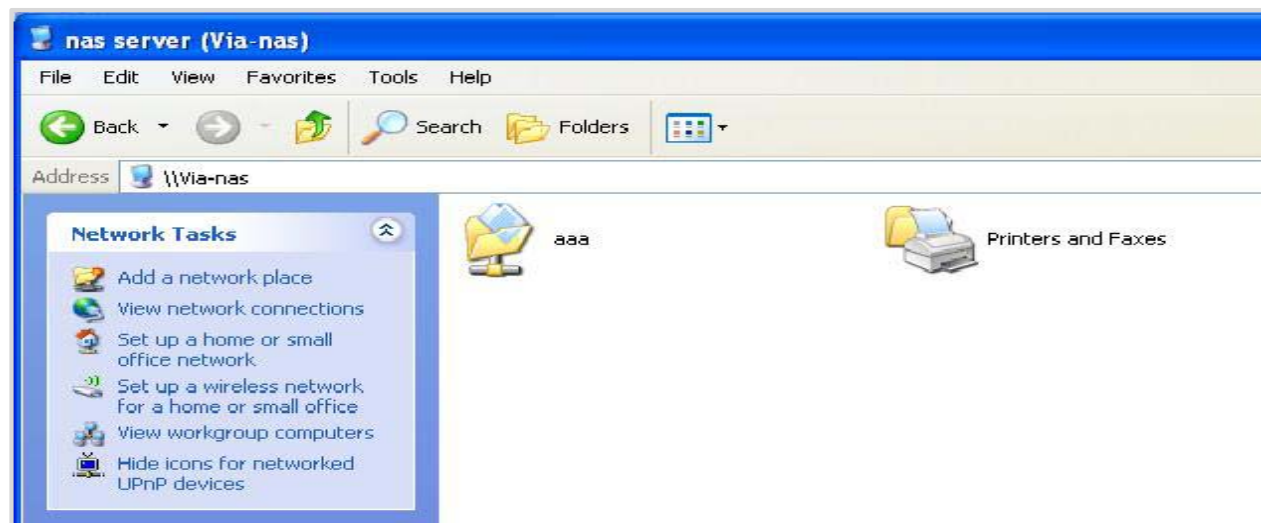


Step6. Fill in **user name** and **password** that registered from administer.



Note: If you want to login in by another user please restart the computer again.

Step7. Then you can start to manage/share files/folders and set up printers.



8. Easy Backup Function of ME-747AN-S

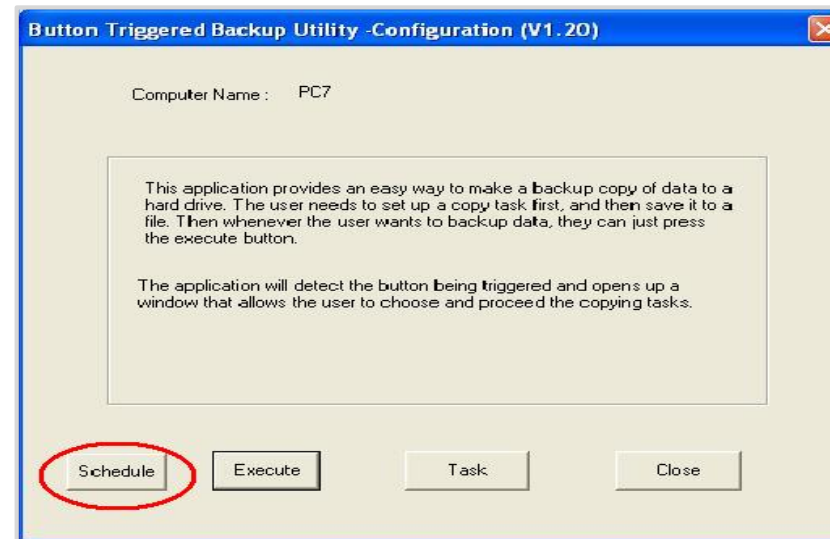
ME-747AN-S supports quick data backup easily. User can set up the path, time and attributes and then can backup data to the target folders conveniently.

Setup the backup schedule :

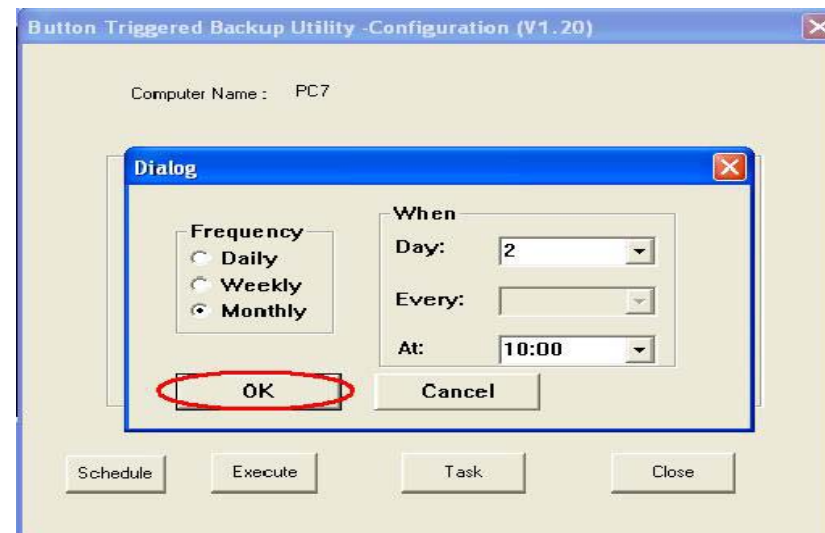
Step1: Click **Start** button on the **NAS Start Program**



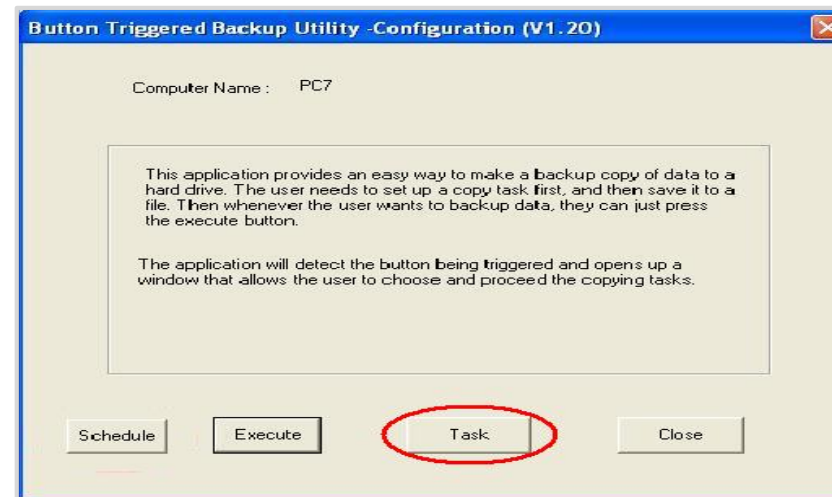
Step2. Click **Schedule** button.



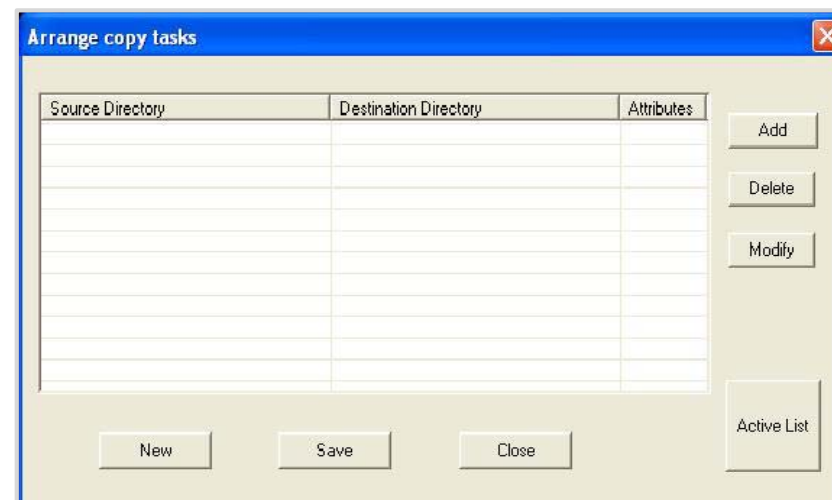
Step3. Setup **date** and **time**, and click **OK**.



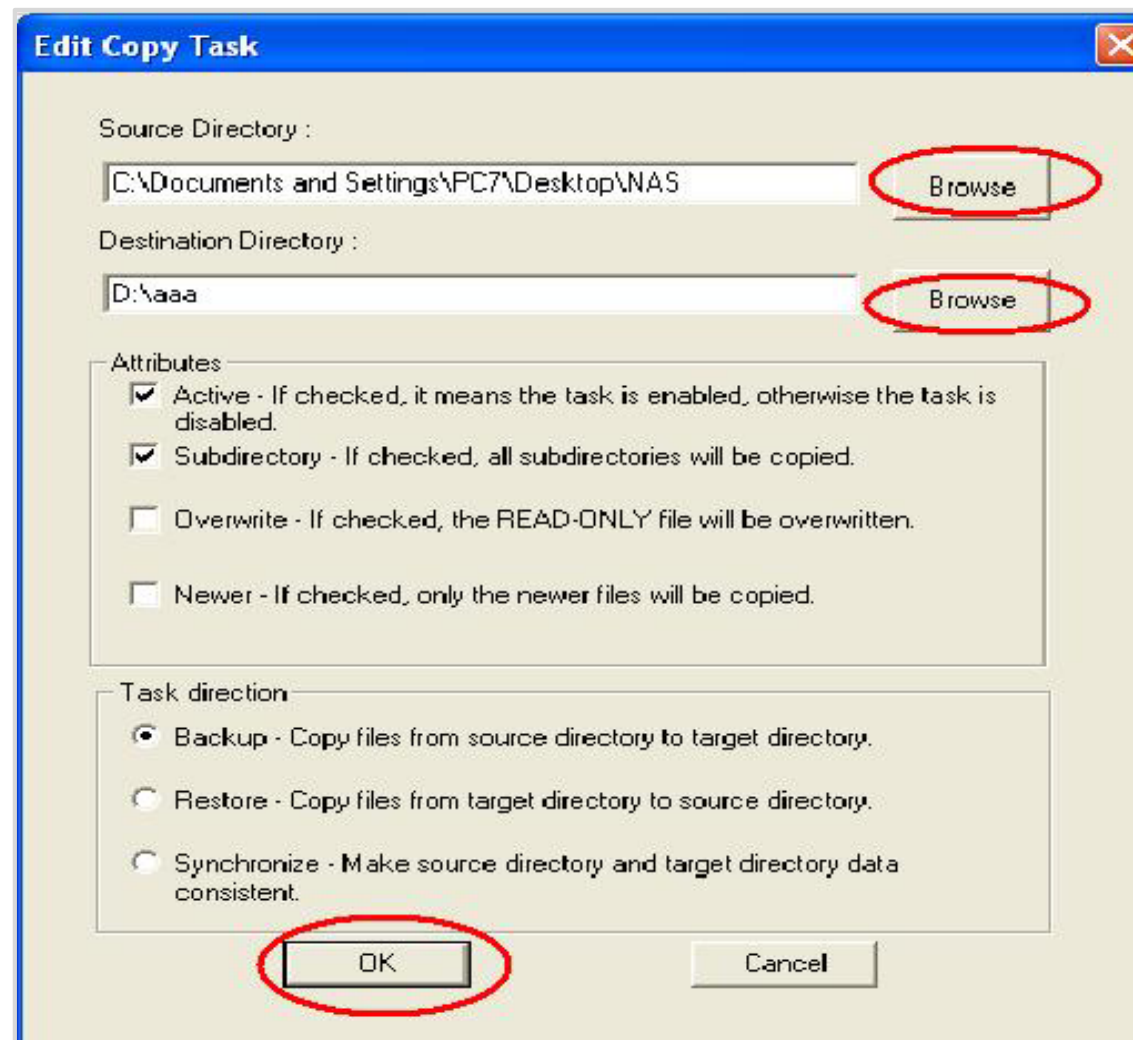
Step4. Click **Task** button.



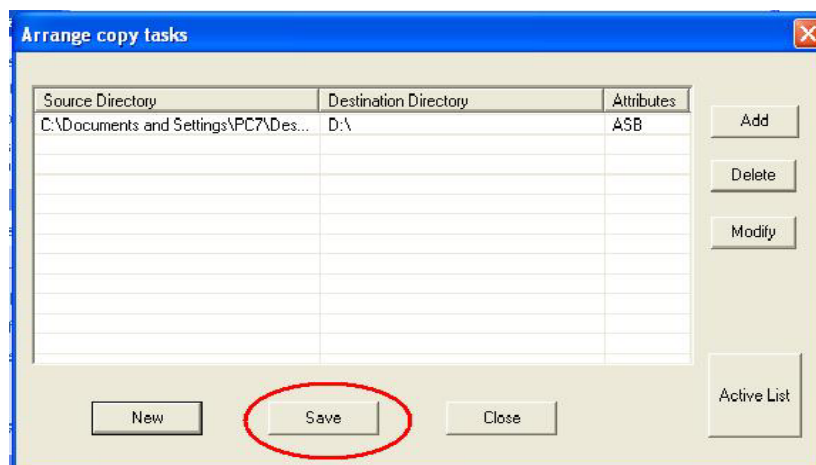
Step5. You can add backup tasks in this menu.



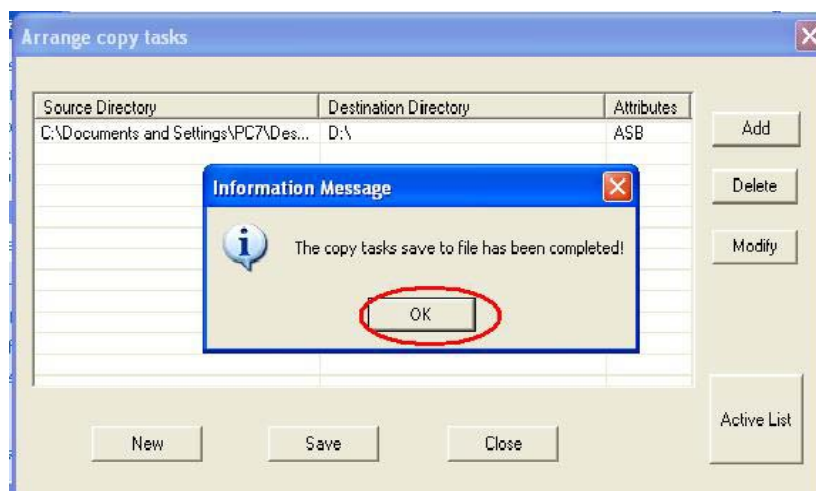
Step6. Click **Add** to enter in this page. And click **Browse** to choose the source and destination, and choose the types of **attributes** and **Task direction**. After that, click **Ok** to confirm it.



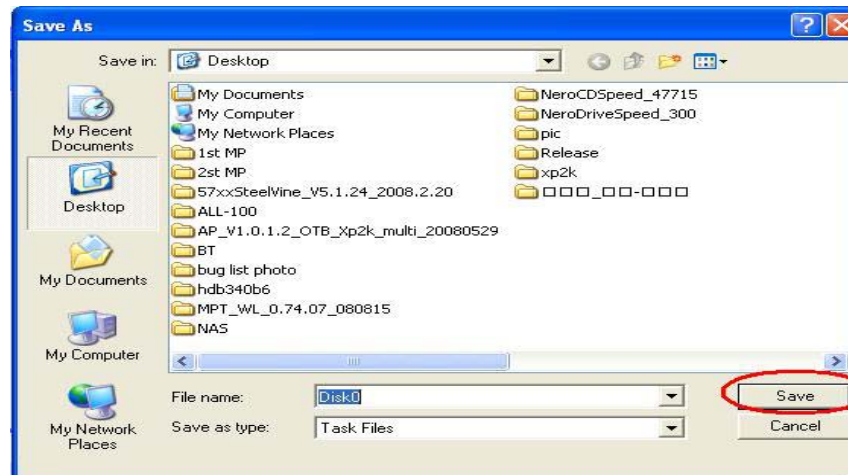
Step7. Click **Save**.



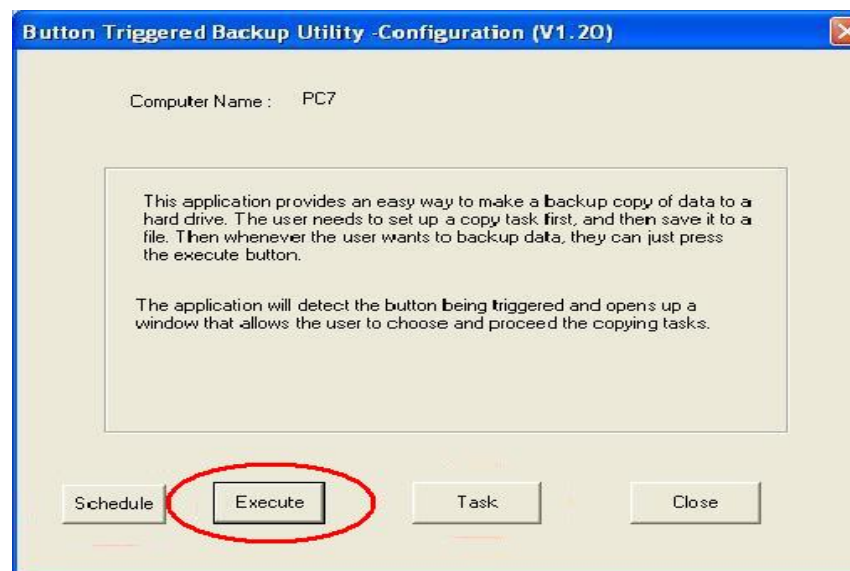
Step8. Click **OK**.

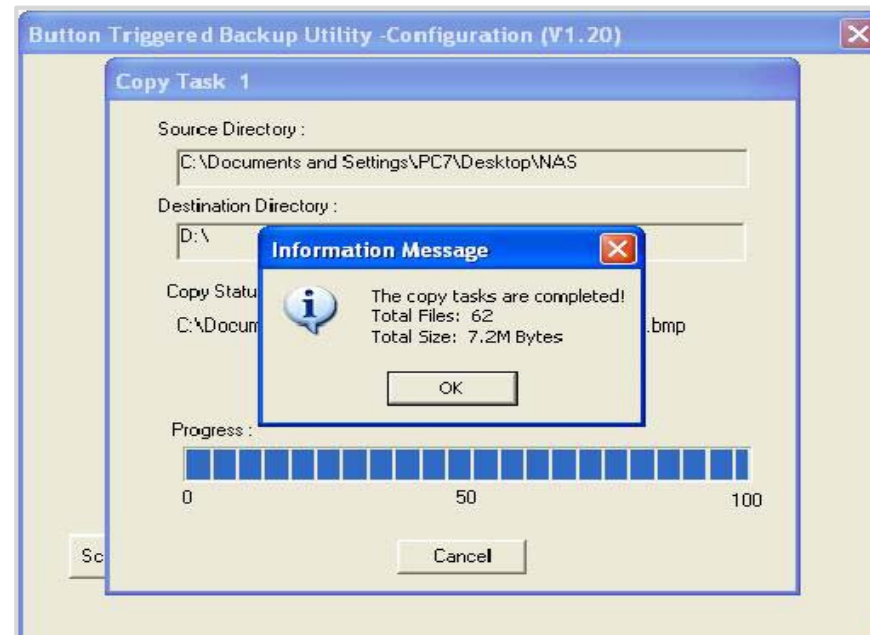


Step9. You can choose a path to save the task.



Step10. Click **Execute** to start backup data to ME-747AN-S.



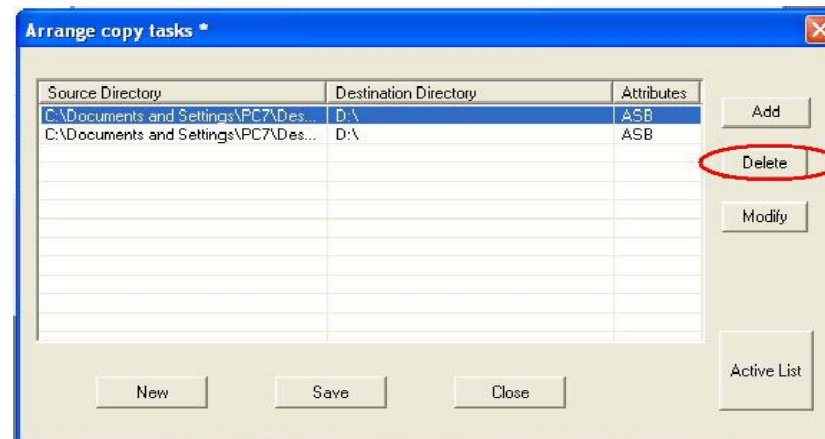


Note: 1. The application will be listed in the tool bar. You can just double click it when next time you want to backup files.

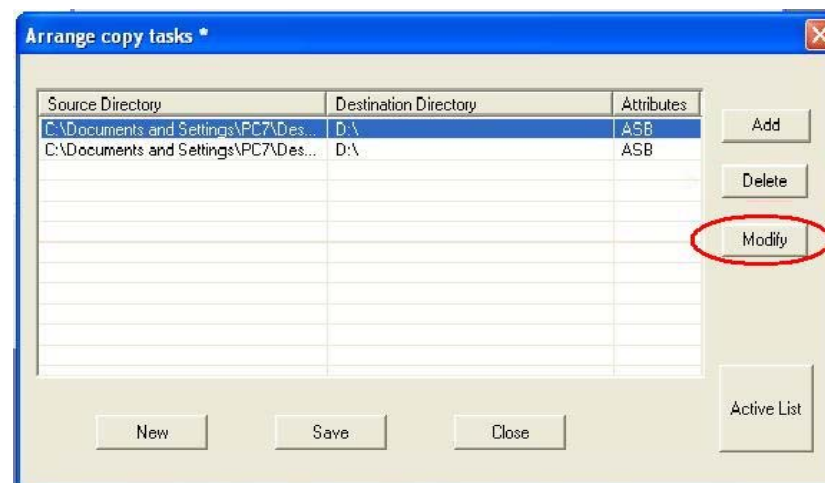


2. About Modify/Delete , just as below :

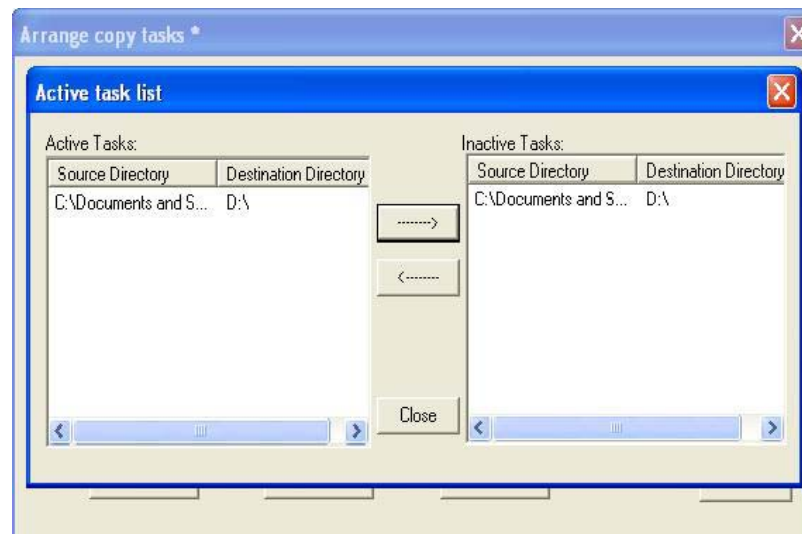
Step1: Choose a task and click the Delete.



*Step2: Choose a task and click the **Modify** to setup the Attribute and task direction.*



*Step3: Choose the task and click the **arrow** to active or inactive.*



9. Reset ME-747AN-S

The situation when you forgot the password of administrator which caused you cannot logon to ME747-AN-S, or you just want to re-setup whole system of ME-747AN-S, please return to page-8 to find the location of **Reset button** of ME-747AN-S. You need to use a needle to insert in the reset hole about 3~5 seconds until the **Starting LED** flash five times. You have to setup all parameters of ME-747AN-S (please refer to **4. Starting NetShare ME-747AN-S** section) once again while you turn on ME-747-AN-S.

All settings and data in ME-747AN-S will be erased during this process. Please backup important data first before starting the reset function.

10. FAQ

1. Does the ME-747AN-S have compatibility issue with any 3.5 inches SATA HDD ?

A: It might have compatibility issues with some old type 3.5 inches SATA HDDs , but it works fine with new type 3.5 inches SATA I/II HDDs.

2. Does the ME-747AN-S support multiple partitions ?

A: No, ME-747AN-S only support single partition.

3. Does ME-747AN-S support the other explorers, like Firefox, KKMANN etc.?

A: Yes, please execute the NAS Startup Program to find the IP address, and fill in the specific IP address to other explorers.

4. Does ME-747AN-S support Bonjour (iTunes)?

A: No, we don't support this function.

5. What can I do if I forgot the administrator's password?

A: The only way is to reset the device. Please find the back panel of ME-747AN-S. You need to use a needle to insert in the reset hole about 3~5 seconds until the **Starting LED** flash five times. (*All data in the ME-747AN-S will be no longer available.)

6. What can I do if I forget the user's password?

A: Please inform the administrator of NetShare manager to assign a new password.

7. Why can't I format my USB pen drive or USB hard drive from USB host?

A: Please mount your USB storages again by storage manager of NetShare manager.(* we suggest the format of the USB storage devices have been formatted to FAT32 or NTFS before connecting with ME-747AN-S.)

8. Why can't I backup data to the hard disk from USB host?

A: Please make sure the formats of hard disk and USB devices are FAT32, Ext2 or Ext3.

9. Why the BitTorrent download failed while I uploaded Bit Torrent lists on BT manager?

A: Please go to the official & authorial webpage to get the Bit Torrent list. ME-747AN-S can't promise to recognize all BitTorrent lists if they are not properly organized.

10. Does ME-747AN-S support HTTP download function?

A: ME747-AN-S supports HTTP protocol. If you want to use HTTP download function, you can just fill in the specific IP address on web explorer, and, Netshare manager will lead you to File manager of Netshare manager. Then you can start to HTTP download function on Netshare manager of

ME-747AN-S.

11. Does ME747AN-S support to UPnP function?

A: Yes. ME747AN-S supports UPnP function. In Vista system , UPnP is enable default settings. In Windows2000/XP system, you need to manually enable UPnP function. Or, you can enable it by **NAS Start Program** of ME-747AN-S. (please execute NAS start program→enable UPnP)

12. Does ME-747AN-S support to DMA/DLMA protocol or connecting to media devices, such as PS3, Xbox360?

A: No. ME-747AN-S doesn't support it.

13. What's situation that I need use "Restart" function in Netshare manager?

A: Sometimes when network traffic or system loading is too heavy, you can use this function to "soft-restart" you system. All settings will be recovered few minutes later.

14. How to upgrade new firmware to ME-747AN-S? Is that any effect after upgrading firmware?

A: Please refer to "**5.1.4.4 How to Upgrade Firmware section**" to update new firmware while you getting new firmware from the reliable resource. No settings & parameters will be changed after firmware upgrade.