



134, Wu Kung Road,  
WuKu Industrial. Zone,  
Taipei County, Taiwan 248  
Tel: +886-2-2299-3279  
Fax: +886-2-2298-2698

No: EM/2009/50057C

## FCC CLASS B DECLARATION REPORT (DOC)

This certifies that the following designated product

**Name : 2 Mega-pixel Day and Night Network Camera(2 Mega-pixel Network Camera)**

**Brand Name : VIVOTEK**

**Model No. : IP7161**

**Added Model(s) : IP7160**

( Product Identification )

It is herewith confirmed and found to comply with the requirements set up by ANSI C63.4 & 47 CFR Part 15, Subpart B regulations for the evaluation of electromagnetic compatibility.

This Device complies with Part 15 of the FCC rules, operation is subject to the following two conditions.

- (1) This device may not cause harmful interference and,
- (2) This device must accept any interference received, including interference that may cause undesired operation.

( Identification of regulations / standards )

This declaration is the responsibility of the manufacturer / importer

**Applicant : VIVOTEK INC.**

**Address of Applicant : 6F, No. 192, Lien-Cheng Rd., Chung-Ho City, Taipei County, Taiwan, R.O.C.**

**Manufacturer : VIVOTEK INC.**

**Address of Manufacturer : 5F, No.168, Lien-Cheng Rd., Chung-Ho City, Taipei County, Taiwan, R.O.C.**

This is the result of test, that was carried out from the submitted type-samples of a product in conformity with the specification of the respective standards. The certificate holder has the right to fix the FCC-mark for EMI on the product complying with the inspection sample.

(Mr. Victor Wen)



.....Jun. 05, 2009.....

( Date )

Any unauthorized alteration, forgery or falsification of the content or appearance of this report is unlawful and offenders may be prosecuted to the fullest extent of the law.

Unless otherwise stated the results shown in this test report refer only to the sample(s) tested. This test report cannot be reproduced, except in full, without prior written permission of the Company. 除非另有說明，此報告結果僅對測試之樣品負責。本報告未經本公司書面許可，不可部份複製。

This Test Report is issued by the Company under its General Conditions of Service printed overleaf or available on request and accessible at [http://www.sgs.com/terms\\_and\\_conditions.htm](http://www.sgs.com/terms_and_conditions.htm). Attention is drawn to the limitation of liability, indemnification and jurisdiction issues defined therein. Any holder of this Test Report is advised that information contained hereon reflects the Company's findings at the time of its intervention only and within the limits of Client's instructions, if any. The Company's sole responsibility is to its Client and this document does not exonerate parties to a transaction from exercising all their rights and obligations under the transaction documents. Any unauthorized alteration, forgery or falsification of the content or appearance of this document is unlawful and offenders may be prosecuted to the fullest extent of the law.

**TWA 0465809**



# FCC-DOC COMPLIANCE REPORT

**Test Report No.** : EM/2009/50057  
**Applicant** : VIVOTEK INC.  
**Address of Applicant** : 6F, No. 192, Lien-Cheng Rd., Chung-Ho City, Taipei County, Taiwan, R.O.C.  
**Manufacturer** : VIVOTEK INC.  
**Address of Manufacturer** : 5F, No.168, Lien-Cheng Rd., Chung-Ho City, Taipei County, Taiwan, R.O.C.

**Equipment Under Test (EUT) :**

**Name** : 2 Mega-pixel Day and Night Network Camera(2 Mega-pixel Network Camera)  
**Brand Name** : VIVOTEK  
**Model No.** : IP7161  
**Added Model(s)** : IP7160

**Standards** : FCC Part 15:2006, Subpart B, Class B  
 ICES 003:2004

**Date of Receipt** : Mar. 06, 2009  
**Date of Test** : Mar. 06 ~ May 21, 2009  
**Date of Issue** : Jun. 05, 2009

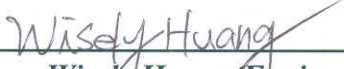

<b>Test Result :</b>	<b>PASS</b>
----------------------	-------------

In the configuration tested, the EUT complied with the standards specified above.

**Remarks :**

This report details the results of the testing carried out on one sample, the results contained in this test report do not relate to other samples of the same product. The manufacturer should ensure that all products in series production are in conformity with the product sample detailed in this report.

This report shall not be reproduced except in full, without the written approval of the laboratory. If the product in this report is used in any configuration other than that detailed in the report, the manufacturer must ensure the new system complies with all relevant standards.

<b>Test By:</b>	 _____ Wisely Huang (Engineer)	<b>Date</b>	Jun. 05, 2009 _____
<b>Prepared By:</b>	Jessie Li _____ Jessie Li (Clerk)	<b>Date</b>	Jun. 05, 2009 _____
<b>Approved By</b>	 _____ Victor Wen (Assistant Manager)	<b>Date</b>	Jun. 05, 2009 _____

Unless otherwise stated the results shown in this test report refer only to the sample(s) tested. This test report cannot be reproduced, except in full, without prior written permission of the Company. 除非另有說明，此報告結果僅對測試之樣品負責。本報告未經本公司書面許可，不可部份複製。

This Test Report is issued by the Company under its General Conditions of Service printed overleaf or available on request and accessible at [http://www.sgs.com/terms\\_and\\_conditions.htm](http://www.sgs.com/terms_and_conditions.htm). Attention is drawn to the limitation of liability, indemnification and jurisdiction issues defined therein. Any holder of this Test Report is advised that information contained hereon reflects the Company's findings at the time of its intervention only and within the limits of Client's instructions, if any. The Company's sole responsibility is to its Client and this document does not exonerate parties to a transaction from exercising all their rights and obligations under the transaction documents. Any unauthorized alteration, forgery or falsification of the content or appearance of this document is unlawful and offenders may be prosecuted to the fullest extent of the law.

TWA 0465594

# Contents

<b>1. GENERAL INFORMATION</b> .....	<b>3</b>
1.1 APPLICANT & MANUFACTURER INFORMATION .....	3
1.2 GENERAL DESCRIPTION OF EUT .....	3
1.3 DETAILS OF EUT .....	3
1.4 OPERATION PROCEDURE .....	3
1.5 DESCRIPTION OF SUPPORT UNITS .....	4
1.6 MODIFICATION LIST .....	4
1.7 CABLE LIST .....	4
1.8 TEST SET-UP CONFIGURATION .....	4
1.9 MEASUREMENT PROCEDURE .....	5
1.10 STANDARDS APPLICABLE FOR TESTING .....	5
1.11 SUMMARY OF RESULTS .....	5
<b>2. RADIO DISTURBANCE</b> .....	<b>6</b>
2.1 TEST RESULTS .....	6
2.2 FREQUENCY RANGE .....	6
2.3 LIMITS OF CONDUCTED AND RADIATED EMISSION .....	6
2.3.1 LIMIT OF CONDUCTED EMISSION OF FCC PART 15, SUBPART B/CISPR 22 .....	6
2.3.2 LIMIT OF RADIATED EMISSIONS OF FCC PART 15, SUBPART B/CISPR 22 .....	7
2.4. TEST OF CONDUCTED EMISSION .....	7
2.4.1 TEST EQUIPMENTS .....	7
2.4.2 TEST SITE .....	7
2.4.3 OPERATING ENVIRONMENT .....	7
2.4.4 MEASUREMENT DATA .....	8
2.5 TEST OF RADIATED EMISSION .....	8
2.5.1 TEST INSTRUMENTS .....	12
2.5.2 TEST SITE .....	12
2.5.3 OPERATING ENVIRONMENT .....	12
2.5.4 MEASUREMENT DATA (10M METHOD) .....	13
<b>3. PHOTOGRAPHS OF TEST</b> .....	<b>17</b>
<b>4. PHOTOGRAPHS OF PRODUCT</b> .....	<b>21</b>

## **1. General Information**

### **1.1 Applicant & Manufacturer Information**

Applicant : VIVOTEK INC.

Address : 6F, No. 192, Lien-Cheng Rd., Chung-Ho City, Taipei County, Taiwan, R.O.C.

Manufacturer : VIVOTEK INC.

Address of Manufacturer : 5F, No.168, Lien-Cheng Rd., Chung-Ho City, Taipei County,  
Taiwan, R.O.C.

### **1.2 General Description of EUT**

Name : 2 Mega-pixel Day and Night Network Camera  
(2 Mega-pixel Network Camera)

Brand Name : VIVOTEK

Model No. : IP7161

Added Model(s) : IP7160

Model Difference : Focal Length; F value; IR-Cut filter; Day & Night;  
Interface; Power Requirement; Adjustment ring  
are different

### **1.3 Details of EUT**

Tested Power Supply : Model : 1. 3A-181WP12 ; 2. AH1812-S.

Input : AC 100~240V/50~60Hz

Output from adaptor : DC 12V/1.5A

Modes/Function : 1. EUT+ENG Adapter.

2. ENT+JENTEC Adapter.

3. ENG Adapter+Lan.

4. POE.

Worst case : ENT+JENTEC Adapter.

### **1.4 Operation Procedure**

1. Set down EUT with support units and turn on the power of all equipment.
2. Pre-test the EUT in all modes by each model, then figure the worst case out.
3. Tests under the normal operation pattern.

**1.5 Description of Support Units**

PRODUCT	MANUFACTURER	MODEL NO.	SERIAL NO.
Notebook	IBM	T43	L3LKVL9
Printer	HP	DJ3820	CN34L181B1
USB Mouse	IBM	MO28UO	23-454022
DVD Player	PHILIPS	DVP5986K/96	AT2B0733215515
Speaker	Multimedia	N/A	N/A

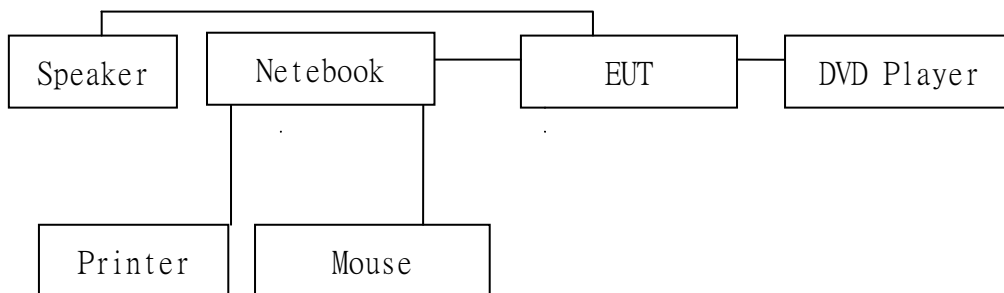
**1.6 Modification List**

No modification by SGS Taiwan Electronics & Communication Laboratory.

**1.7 Cable List**

Cable Type	Length	Shield
Earphone cable	1.85m	Non-shielding
JENTEC Adapter cable	1.85m	Non-shielding
ENG Adapter cable	1.72m	Non-shielding
ENG Adapter(core near power out)	1.8m	Non-shielding

**1.8 Test Set-Up Configuration**



**1.9 Measurement Procedure**

Conducted Emission Testing was performed according ANSI C63.4:2003 in a shielded room with peripherals placed on a table, 0.8m high over a metal floor. It was located more than required distance away from the shielded room wall.

Radiated Emission Testing was performed according to ANSI C63.4:2003 at the open field test site. The EUT was placed in a 0.8m high table along with the peripherals. The turn table was separated from the antenna distance 10meters. Cables were placed in a position to produce maximum emissions as determined by experimentation, and operation mode was selected for maximum.

The frequencies and amplitudes of maximum emission were measured at varying azimuths, antenna heights and antenna polarities. Reported are maximized emission levels.

**1.10 Standards Applicable for Testing**

Table of tests to be carried out under FCC Part 15, Subpart B

<b>Test Standards</b>	<b>Status</b>
FCC Part 15, Subpart B	Applicable
Deviation from Standard	No Deviation

**1.11 Summary of Results**

<b>Highest Emission</b>					
<b>Standard</b>	<b>Test Type</b>	<b>Result</b>	<b>Phase/Polar.</b>	<b>Frequency(MHz)</b>	<b>Margin(dB)</b>
FCC Part 15 Subpart B Class B/CISPR 22 ICES 003:2004	Conducted Emission	PASS	Line(JENTEC)	0.6700	-11.53(QP)
			Neutral(JENTEC)	0.6700	-10.37(QP)
	Radiated Emission	PASS	Ver.	599.8750	-2.71(QP)

## 2. Radio Disturbance

### 2.1 Test Results

	Results
Conducted Emission	<b>Pass</b>
Radiated Emission	<b>Pass</b>

### 2.2 Frequency Range

Conducted Emission : 150 kHz - 30 MHz

Radiated Emission : 30 MHz - 1000 MHz

### 2.3 Limits Of Conducted And Radiated Emission

#### 2.3.1 Limit Of Conducted Emission Of FCC Part 15, Subpart B/CISPR 22

FREQUENCY (MHz)	Class A (dBuV)		Class B (dBuV)	
	Quasi - peak	Average	Quasi - peak	Average
0.15 - 0.5	79	66	66 - 56	56 - 46
0.50 - 5.0	73	60	56	46
5.0 - 30.0	73	60	60	50

Note : (1) The lower limit shall apply at the transition frequencies.

(2) The limit decreases linearly with the logarithm of the frequency in the range 0.15 to 0.50 MHz.

(3) All emanation from a class A/B digital device or system, including any network of conductors and apparatus connected there to, shall not exceed the level of field strengths specified above.

**2.3.2 Limit Of Radiated Emissions Of FCC Part 15, Subpart B/CISPR 22**

- Detector Function : Quasi – Peak

FREQUENCY (MHz)	Class A (at 10m)	Class B (at 10m)
	dBuV/m	dBuV/m
30-230	40	30
230-1000	47	37

- Detector Function : Peak , Average

FREQUENCY (MHz)	Class A (dBuV) (at 3m)		Class B (dBuV) (at 3m)	
	Peak	Average	Peak	Average
Above 1000	79.3	59.3	73.9	53.9

**2.4. Test of Conducted Emission**

**2.4.1 Test Equipments**

Description	Manufacturer	Model No.	Serial No.	Date of Calibration
EMI Test Receiver	ROHDE&SCHWARZ	ESCS 30	828985/004	Sep. 16, 2008
Coaxial Cables	N/A	WK CE Cable	N/A	Nov. 29, 2008
L.I.S.N	Rolf-Heine	NNB-2/16Z	99012	Feb. 02, 2009
L.I.S.N	FCC	FCC-LISN-50/250-25-2-01	04034	Feb. 02, 2009

**2.4.2 Test Site**

SGS Taiwan LTD. Electronics & Communication Laboratory  
 No.134, Wu Kung Road. Wuku Industrial Zone, Taipei County 248, Taiwan (R.O.C.)

**2.4.3 Operating Environment**

Temperature : 24 degree C                      Humidity : 61 %RH  
 Atmospheric Pressure : 992 mBar



2.4.4 Measurement Data

ENG Adaptor Mode

L:

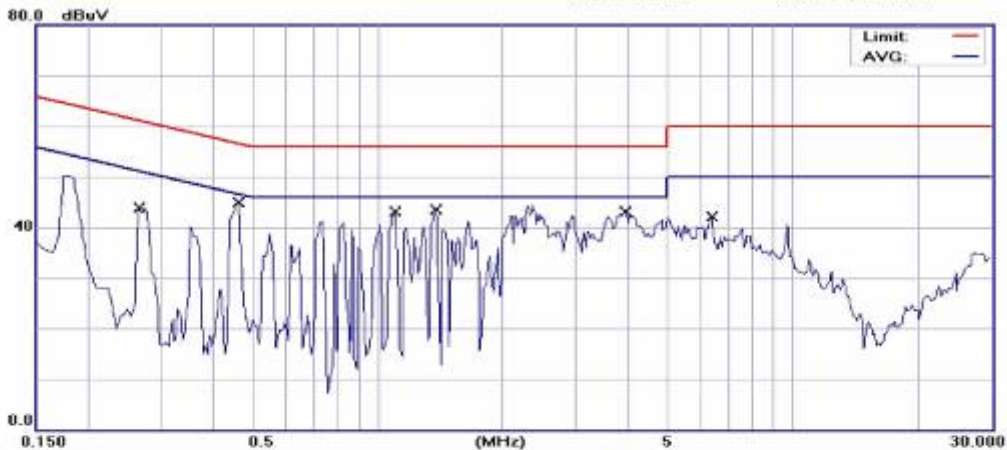


臺灣檢驗科技股份有限公司-電子暨通訊服務部  
 台北縣五股工業區五工路134號  
 電話：(02) 22993279 傳真：(02) 22982698

Conducted Emission Measurement

Date: 2009/5/20

Time: 下午 02:49:21



Site SGS CONDUCTED #1

Phase: L1

Temperature: 24 °C

Limit: FCC Class B Conduction(QP)

Power: AC 120V/60Hz

Humidity: 61 %

EUT: 2 Mega-pixel day and Night Network Camera

M/N: IP7161

Note: Full System mode (ENG ADAPTER)

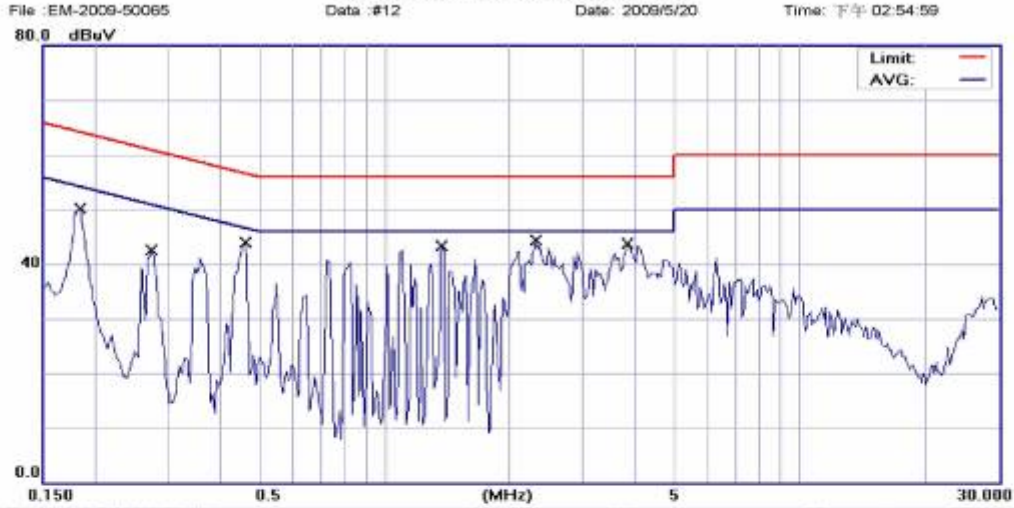
No.	Mk.	Freq.	Reading	Factor	Measure-	Limit	Over	Detector	Comment
		MHz	Level		ment				
			dBuV	dB	dBuV	dBuV	dB		
1		0.2650	43.80	0.11	43.91	61.27	-17.36	QP	
2	*	0.4600	44.82	0.07	44.89	56.69	-11.80	QP	
3		1.1000	43.09	0.09	43.18	56.00	-12.82	QP	
4		1.3800	43.33	0.11	43.44	56.00	-12.56	QP	
5		3.9600	43.00	0.15	43.15	56.00	-12.85	QP	
6		6.3800	41.90	0.22	42.12	60.00	-17.88	QP	

N:



臺灣檢驗科技股份有限公司-電子暨通訊服務部  
 台北縣五股工業區五工路134號  
 電話：(02) 22993279 傳真：(02) 22982698

Conducted Emission Measurement



Site SGS CONDUCTED #1 Phase: **N** Temperature: 24 °C  
 Limit: FCC Class B Conduction(QP) Power: AC 120V/60Hz Humidity: 61 %  
 EUT: 2 Mega-pixel day and Night Network Camera Distance: Air Pressure: hpa  
 M/N: IP7161  
 Note: Full System mode (ENG ADAPTER)

No.	Mk.	Freq. MHz	Reading		Factor	Measure- ment dBuV	Limit dBuV	Over dB	Detector	Comment
			Level dBuV	dB						
1		0.1844	50.01	0.16	50.17	64.29	-14.12	QP		
2		0.2744	42.44	0.13	42.57	60.98	-18.41	QP		
3		0.4637	43.74	0.10	43.84	56.63	-12.79	QP		
4		1.3738	43.25	0.13	43.38	56.00	-12.62	QP		
5	*	2.3090	44.09	0.15	44.24	56.00	-11.76	QP		
6		3.8399	43.48	0.17	43.65	56.00	-12.35	QP		

\*:Maximum data x:Over limit l:over margin

●Reference Only

JENTEC Adaptor Mode

L:

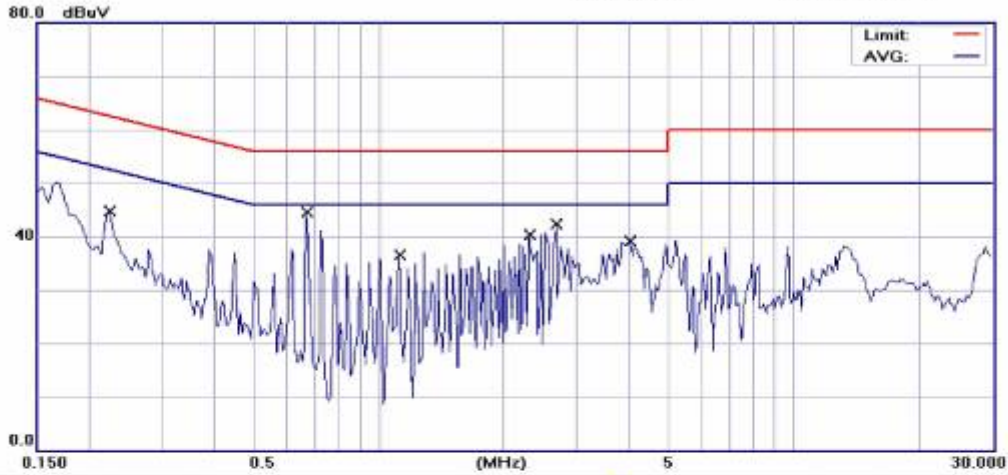


臺灣檢驗科技股份有限公司-電子暨通訊服務部  
 台北縣五股工業區五工路134號  
 電話：(02) 22993279 傳真：(02) 22982698

Conducted Emission Measurement

Date: 2009/5/20

Time: 下午 03:22:12



Site: SGS CONDUCTED #1

Phase: L1

Temperature: 24 °C

Limit: FCC Class B Conduction(QP)

Power: AC 120V/60Hz

Humidity: 61 %

EUT: 2 Mega-pixel day and Night Network Camera

M/N: IP7161

Note: Full System mode (JENTEC ADAPTER)

No.	Mk.	Freq. MHz	Reading Level dBuV	Factor dB	Measurement dBuV	Limit dBuV	Over dB	Detector	Comment
1		0.2250	44.54	0.12	44.66	62.63	-17.97	QP	
2	*	0.6700	44.39	0.08	44.47	56.00	-11.53	QP	
3		1.1200	36.42	0.09	36.51	56.00	-19.49	QP	
4		2.3000	40.15	0.13	40.28	56.00	-15.72	QP	
5		2.6900	42.13	0.14	42.27	56.00	-13.73	QP	
6		4.0400	38.94	0.15	39.09	56.00	-16.91	QP	

N:

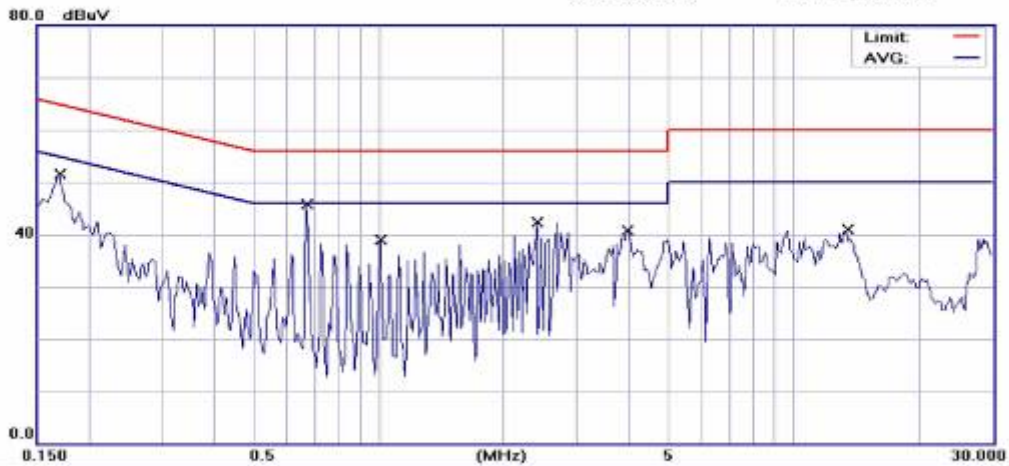


臺灣檢驗科技股份有限公司-電子暨通訊服務部  
 台北縣五股工業區五工路134號  
 電話：(02) 22993279 傳真：(02) 22982698

Conducted Emission Measurement

Date: 2009/5/20

Time: 下午 03:20:09



Site SGS CONDUCTED #1

Phase: N

Temperature: 24 °C

Limit: FCC Class B Conduction(QP)

Power: AC 120V/60Hz

Humidity: 61 %

EUT: 2 Mega-pixel day and Night Network Camera

M/N: IP7161

Note: Full System mode (JENTEC ADAPTER)

No.	Mk.	Freq. MHz	Reading Level dBuV	Factor dB	Measure- ment dBuV	Limit dBuV	Over dB	Detector	Comment
1		0.1700	51.31	0.17	51.48	64.96	-13.48	QP	
2	*	0.6700	45.52	0.11	45.63	56.00	-10.37	QP	
3		1.0100	38.77	0.12	38.89	56.00	-17.11	QP	
4		2.4100	42.11	0.15	42.26	56.00	-13.74	QP	
5		3.9800	40.56	0.17	40.73	56.00	-15.27	QP	
6		13.5200	40.45	0.43	40.88	60.00	-19.12	QP	

## **2.5 Test of Radiated Emission**

### **2.5.1 Test Instruments**

Description	Manufacturer	Model No.	Serial No.	Date of Calibration
EMI Test Receiver	ROHDE&SCHWARZ	ESCI	100335	Feb. 05, 2009
RF-Amplifier	Agilent	8447D	2944A09469	Nov. 29, 2008
Broadband Antenna	SCHWAZBECK	VULB9160	9160-3224	Mar. 03, 2009
Coaxial Cables	N/A	OS RE Cable	N/A	Nov. 29, 2008
Antenna Master	HD GmbH	MA 240	240/515	N/A
Turn Table	HD GmbH	DT420	420/542	N/A
Controller	HD GmbH	HD 100	100/589	N/A

### **2.5.2 Test Site**

SGS Taiwan LTD. Electronics & Communication Laboratory  
No. 29, Pau-Tou-Tsuo Valley, Chia-Pau Tsuen, Linkou Hsiang, Taipei County 244,  
Taiwan (R.O.C.)

### **2.5.3 Operating Environment**

Temperature : 22 degree C                      Humidity : 59 %RH  
Atmospheric Pressure : 996 mBar

2.5.4 Measurement Data (10m Method)

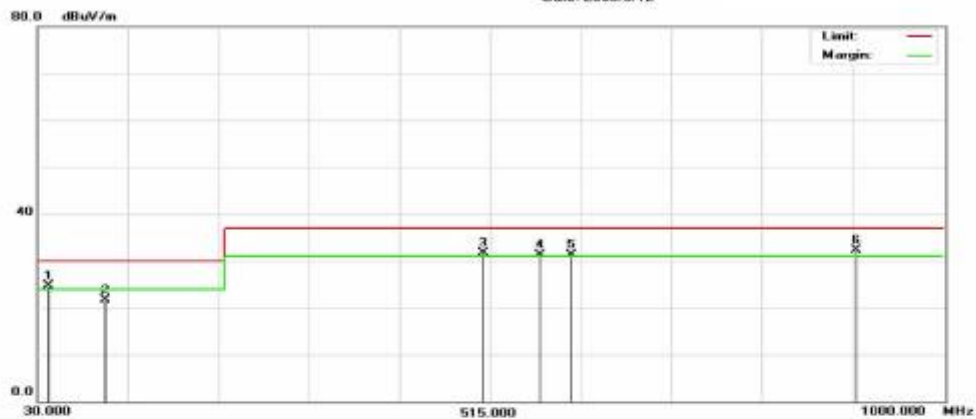
Date of Test : May 12, 2009  
 ENG Adaptor Mode  
 Horizontal polarization



臺灣檢驗科技股份有限公司 - 電子暨通訊實驗室  
 Address : 台北縣五股工業區五工路 134 號  
 Tel:02-2299-3279 Fax:02-2298-2698

Radiated Emission Measurement

Date: 2009/5/12



Site : 10M Open Site      Polarization: **Horizontal**      Temperature: 22 °C  
 Limit: CISPR22 Class B 10M Radiation      Power: AC 120V/60Hz      Humidity: 50%  
 EUT: 2 Mega-pixel day and Night Network Camera  
 MN: IP7161  
 Note: Full System Operation ( ENG Adapter)

No.	Mk.	Freq. MHz	Reading Level dBuV	Factor dB	Measure- ment dBuV/m	Limit dBuV/m	Over dB	Detector	Comment
1	!	41.1250	42.29	-17.57	24.72	30.00	-5.28	QP	
2		101.7500	40.59	-18.86	21.73	30.00	-8.27	QP	
3	!	506.4500	39.69	-7.90	31.79	37.00	-5.21	QP	
4	!	566.0750	37.85	-6.58	31.27	37.00	-5.73	QP	
5	!	600.3300	36.69	-5.33	31.36	37.00	-5.64	QP	
6	*	906.5750	31.52	0.70	32.22	37.00	-4.78	QP	



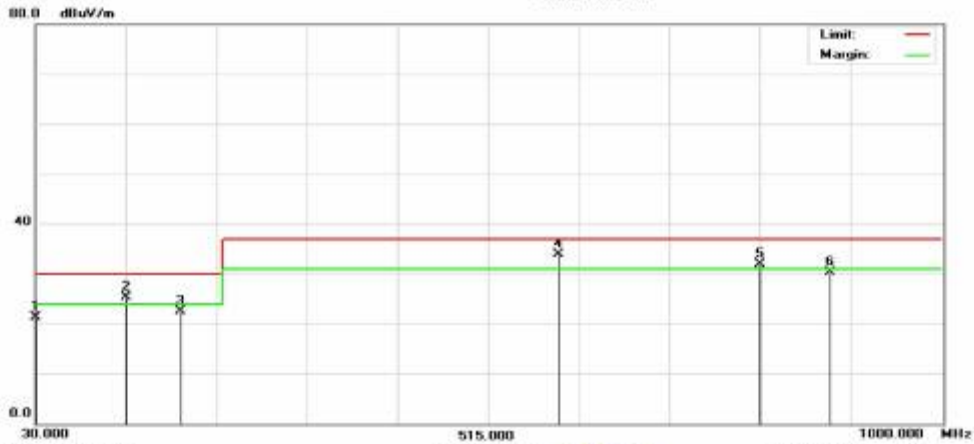
Vertical polarization



臺灣檢驗科技股份有限公司 - 電子電訊實驗室  
 Address : 台北縣五股工業區五工路 134 號  
 Tel:02-2299-3279 Fax:02-2298-2698

Radiated Emission Measurement

Date: 2009/5/12



Site : 10M Open Site      Polarization: **Vertical**      Temperature: 22 °C  
 Limit: CISPR22 Class B 10M Radiation      Power: AC 120V/60Hz      Humidity: 59%  
 EUT: 2 Mega-pixel day and Night Network Camera  
 MN: IP7161  
 Note: Full System Operation ( ENG Adapter)

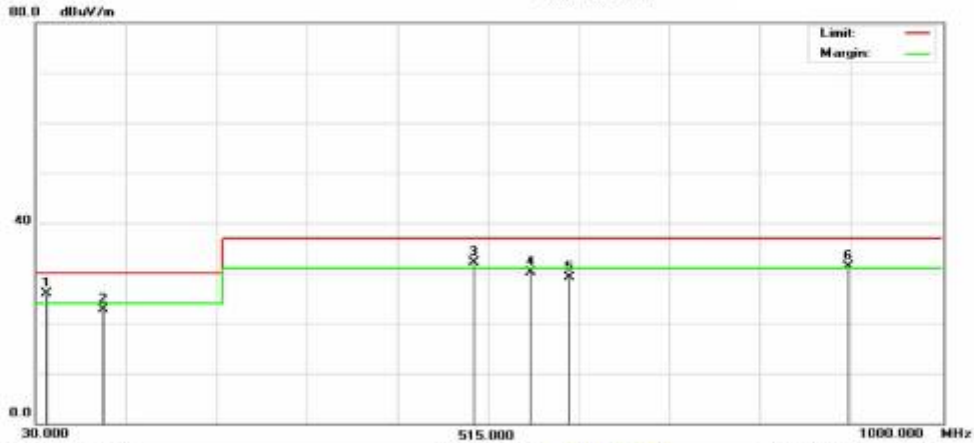
No.	Mk.	Freq. MHz	Reading Level dBuV	Factor dB	Measure- ment dBuV/m	Limit dBuV/m	Over dB	Detector	Comment
1		31.6250	39.06	-17.68	21.38	30.00	-8.62	QP	
2	!	125.0000	41.36	-16.03	25.33	30.00	-4.67	QP	
3		183.6520	38.62	-16.03	22.59	30.00	-7.41	QP	
4	*	587.8750	39.63	-5.79	33.84	37.00	-3.16	QP	
5	!	805.1500	33.29	-1.30	31.99	37.00	-5.01	QP	
6		880.1750	30.17	0.12	30.29	37.00	-6.71	QP	

JENTEC Adaptor Mode  
 Horizontal polarization



臺灣檢驗科技股份有限公司 - 電子電訊實驗室  
 Address : 台北縣五股工業區五工路 134 號  
 Tel:02-2299-3279 Fax:02-2298-2698

Radiated Emission Measurement  
 Date: 2009/5/12



Site : 10M Open Site  
 Limit: CISPR22 Class B 10M Radiation  
 EUT: 2 Mega-pixel day and Night Network Camera  
 MN: IP7161  
 Note: Full System Operation (JENTEC Adapter)

Polarization: **Horizontal**  
 Power: AC 120V/60Hz  
 Temperature: 22 °C  
 Humidity: 58%

No.	Mk.	Freq. MHz	Reading Level dBuV	Factor dB	Measure- ment dBuV/m	Limit dBuV/m	Over dB	Detector	Comment
1	*	42.1250	43.36	-17.44	25.92	30.00	-4.08	QP	
2		102.7500	41.36	-18.63	22.73	30.00	-7.27	QP	
3	!	500.4500	40.19	-8.00	32.19	37.00	-4.81	QP	
4		561.0750	36.79	-6.78	30.01	37.00	-6.99	QP	
5		602.3000	34.36	-5.30	29.06	37.00	-7.94	QP	
6	!	900.5750	30.70	0.58	31.28	37.00	-5.72	QP	

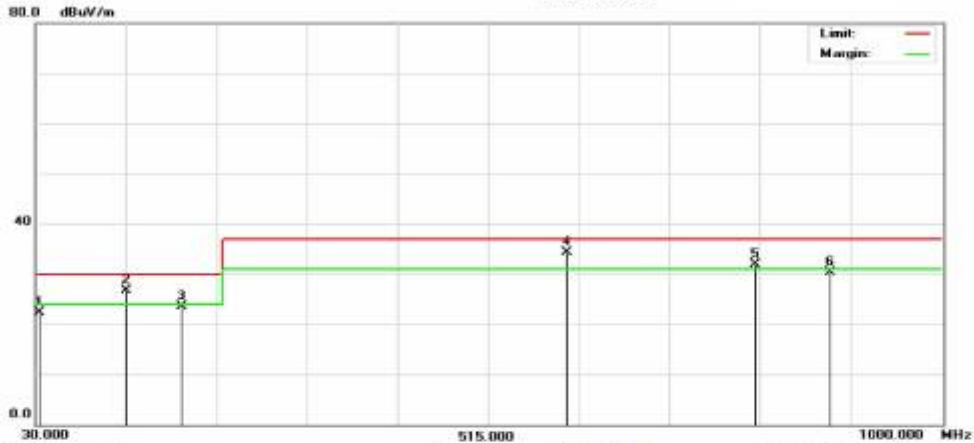
Vertical polarization



臺灣檢驗科技股份有限公司 - 電子電訊通訊實驗室  
 Address : 台北縣五股工業區五工路 134 號  
 Tel:02-2299-3279 Fax:02-2298-2698

Radiated Emission Measurement

Date: 2009/5/12



Site : 10M Open Site

Polarization: **Vertical**

Temperature: 22 °C

Limit: CISPR22 Class B 10M Radiation

Power: AC 120V/60Hz

Humidity: 56%

EUT: 2 Mega-pixel day and Night Network Camera

MN: IP7161

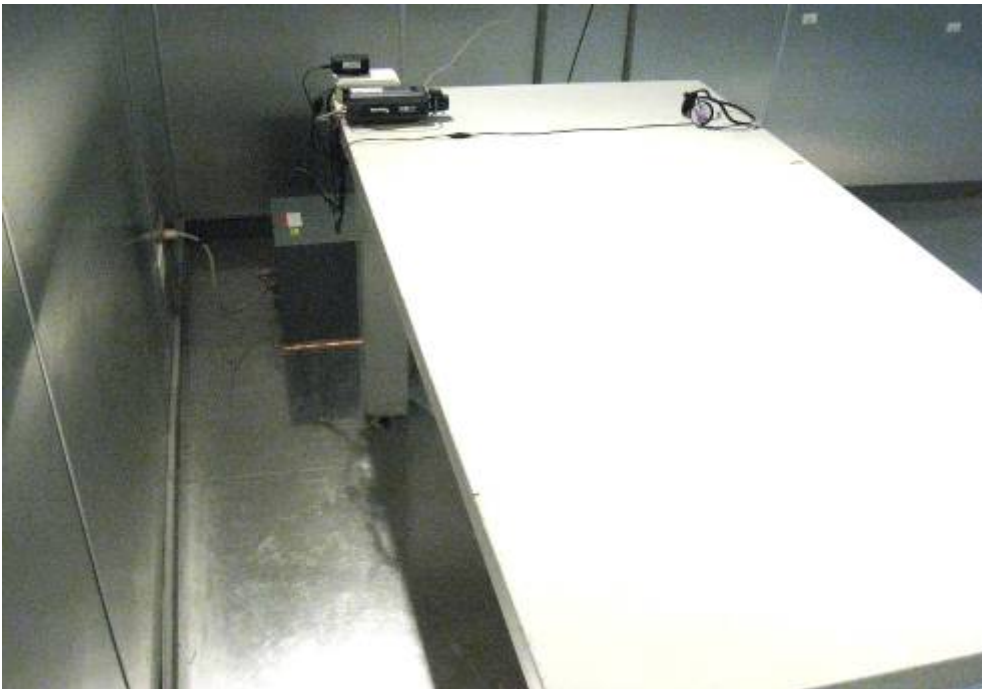
Note: Full System Operation (JENTEC Adapter)

No.	Mk.	Freq. MHz	Reading Level dBuV	Factor dB	Measure- ment dBuV/m	Limit dBuV/m	Over dB	Detector	Comment
1		33.6520	40.22	-17.84	22.38	30.00	-7.62	QP	
2		127.0000	42.63	-15.85	26.78	30.00	-3.22	QP	
3		187.6250	40.18	-16.59	23.59	30.00	-6.41	QP	
4	*	599.8750	39.63	-5.34	34.29	37.00	-2.71	QP	
5		801.1500	33.36	-1.37	31.99	37.00	-5.01	QP	
6		881.1750	30.15	0.14	30.29	37.00	-6.71	QP	

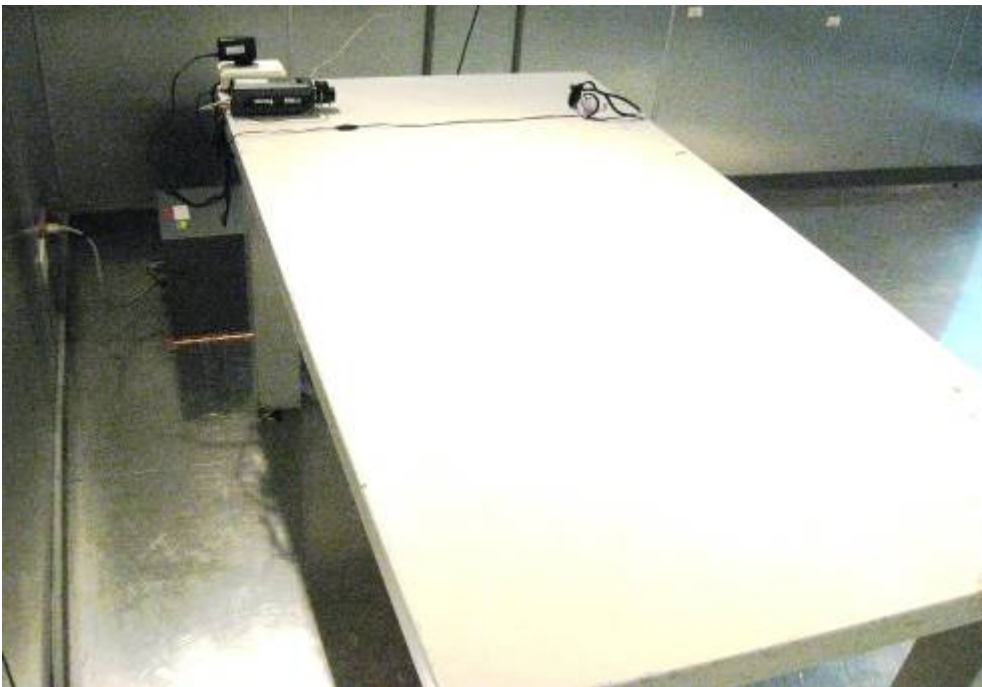
### 3. Photographs of Test

CE:

ENG Adaptor Mode



**JENTEC Adaptor Mode**



RE:

ENG Adaptor Mode





**JENTEC Adaptor Mode**



#### 4. Photographs of Product

Exterior:

Model No. : IP7161

















Added Model(s) : IP7160

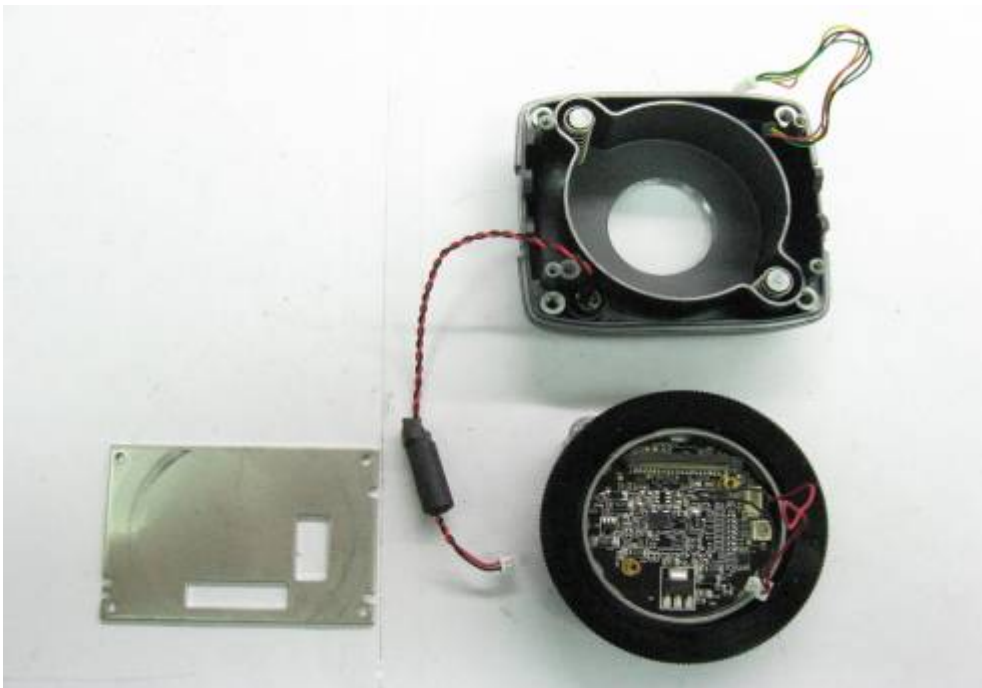
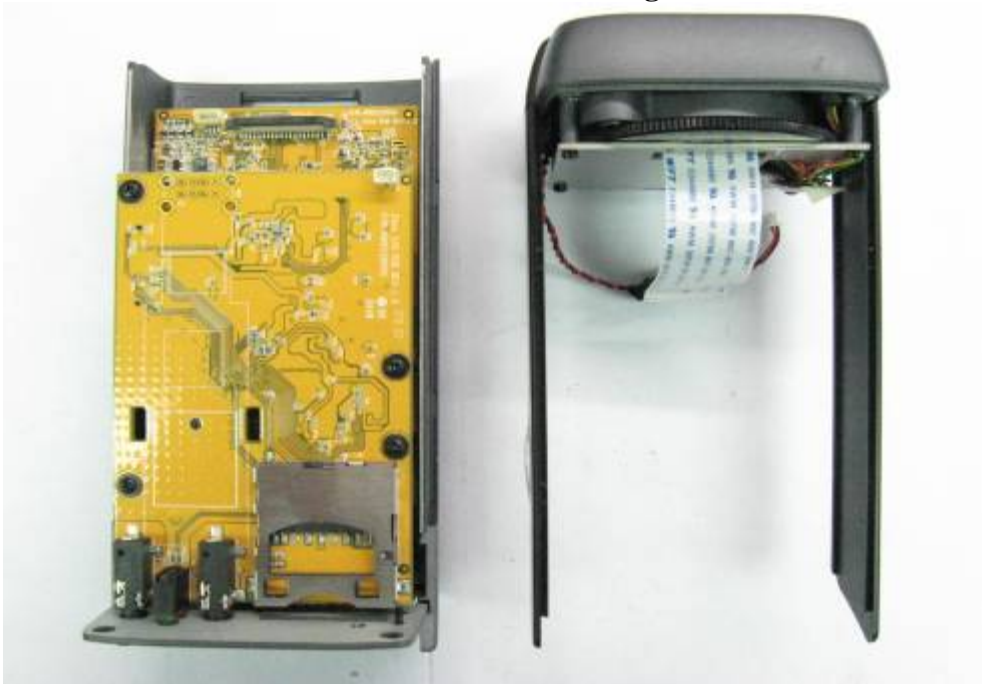






Interior:

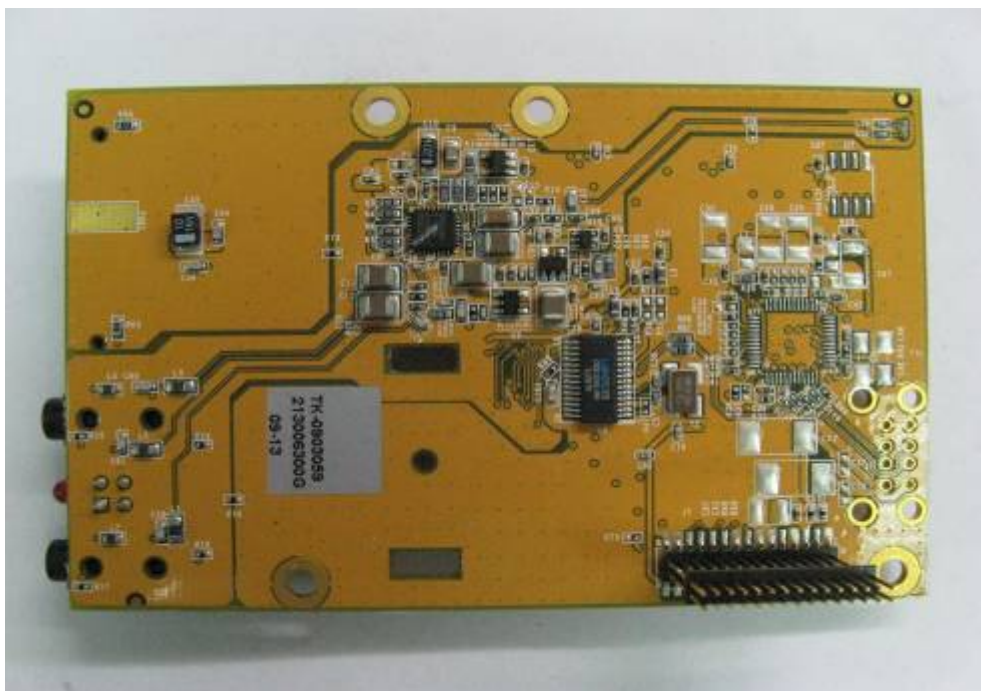
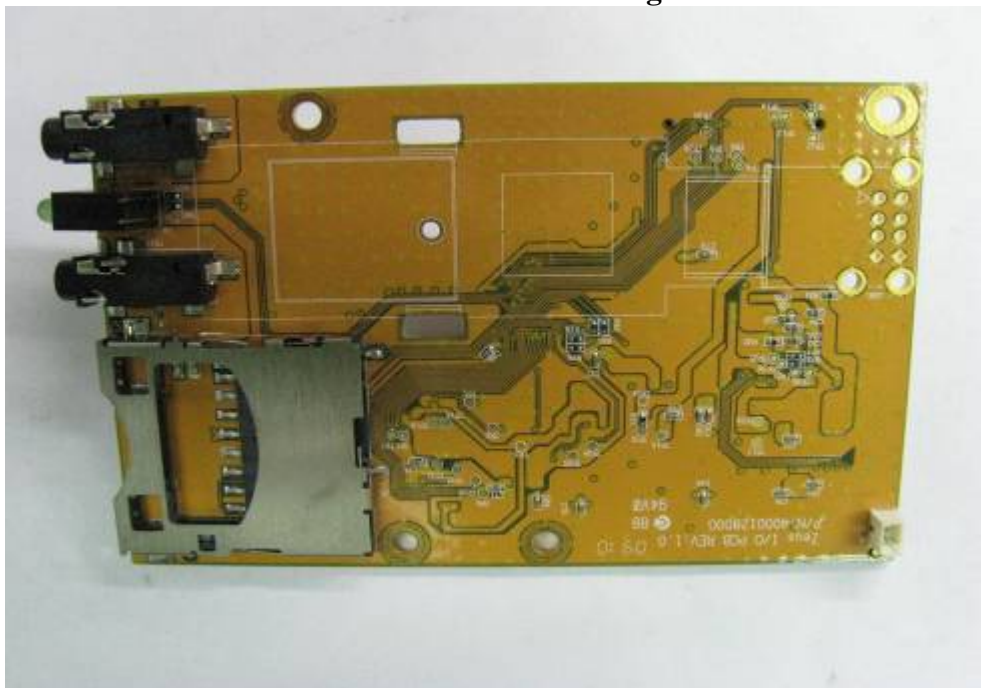


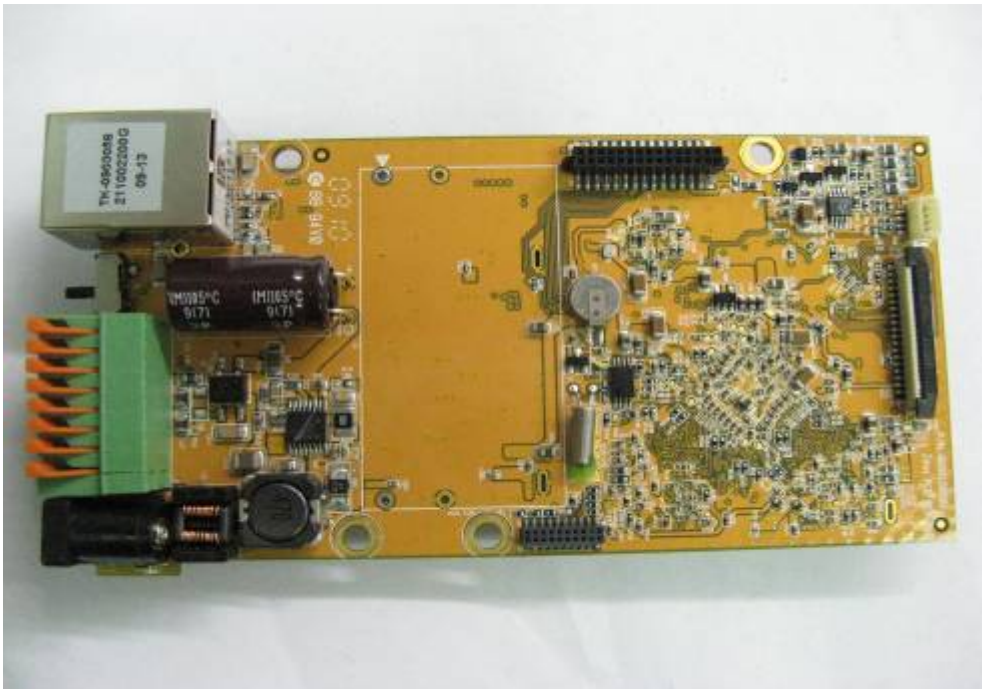
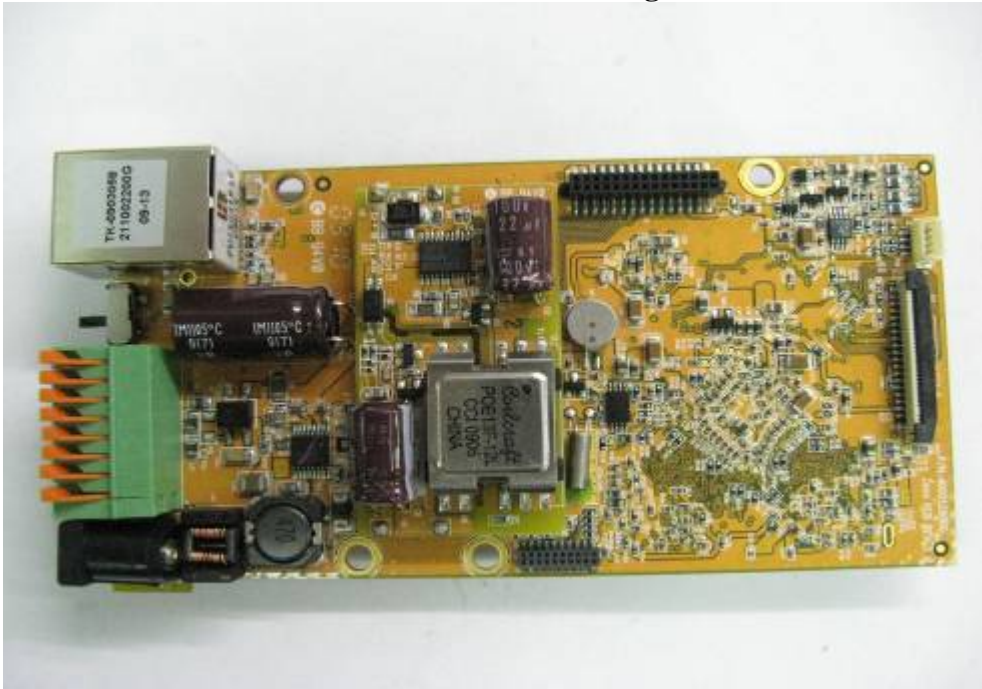


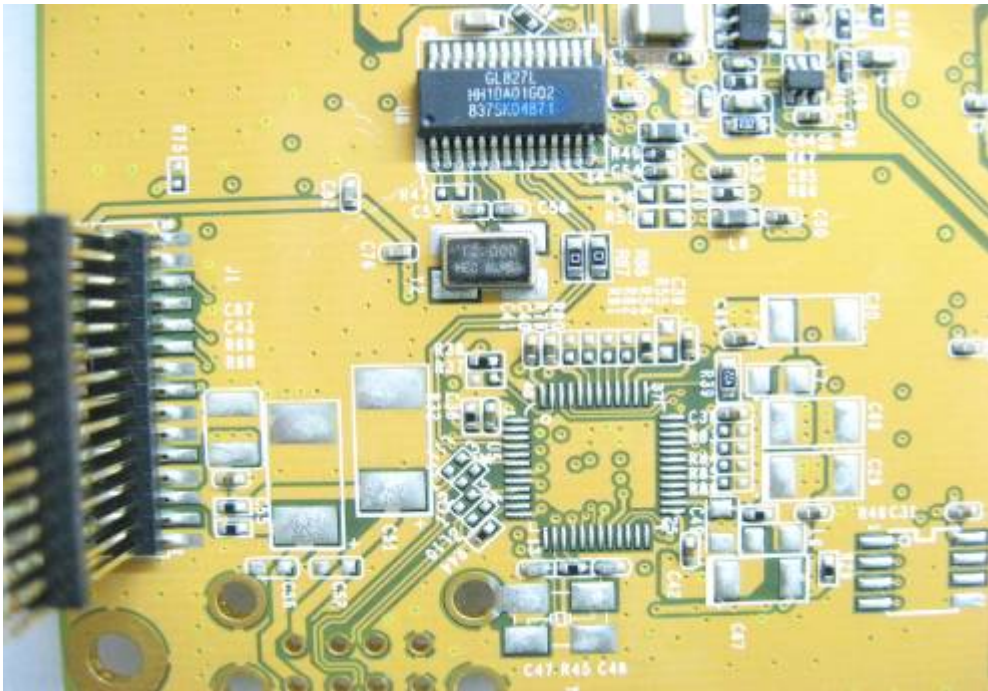
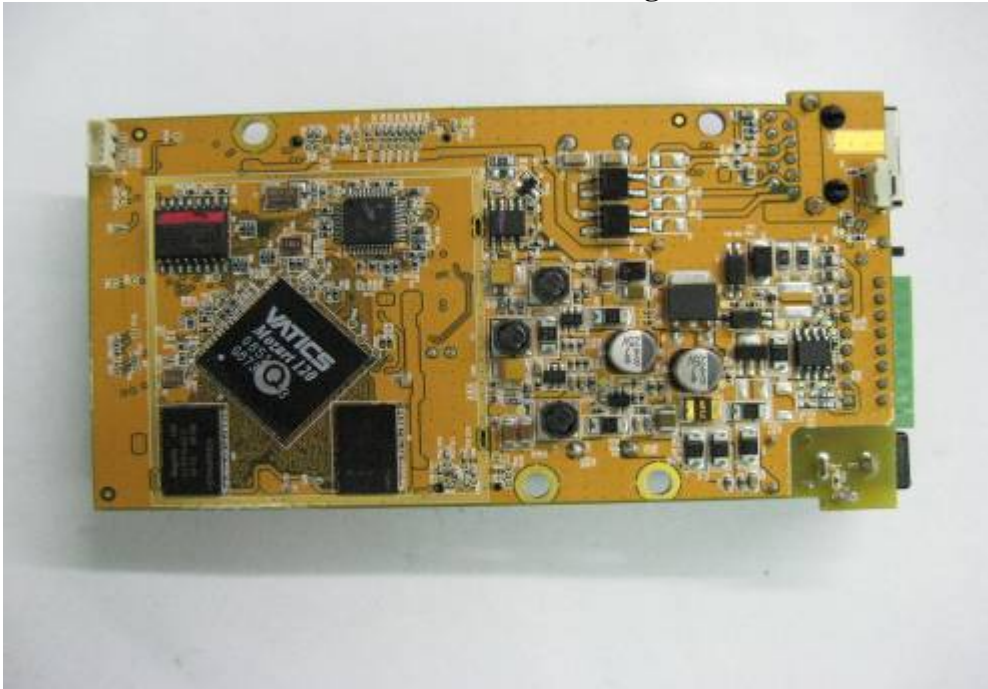




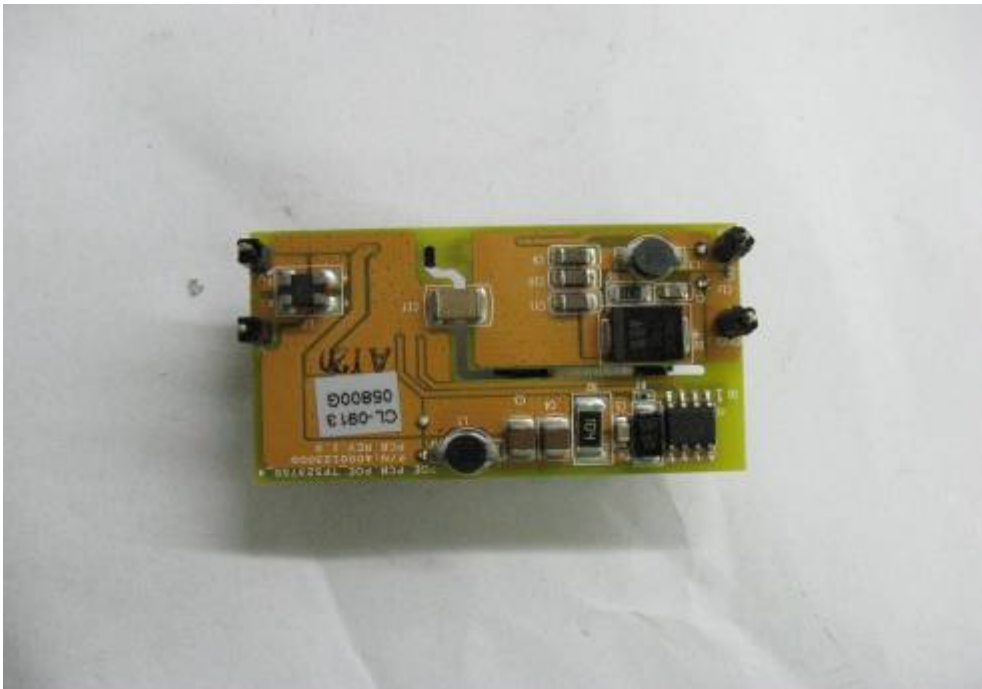
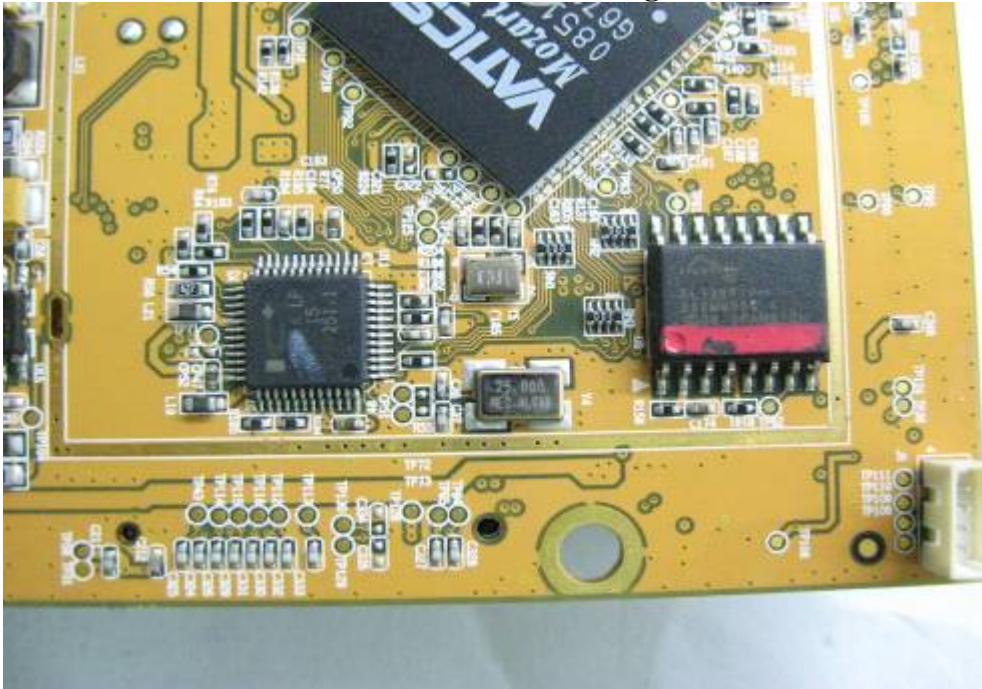


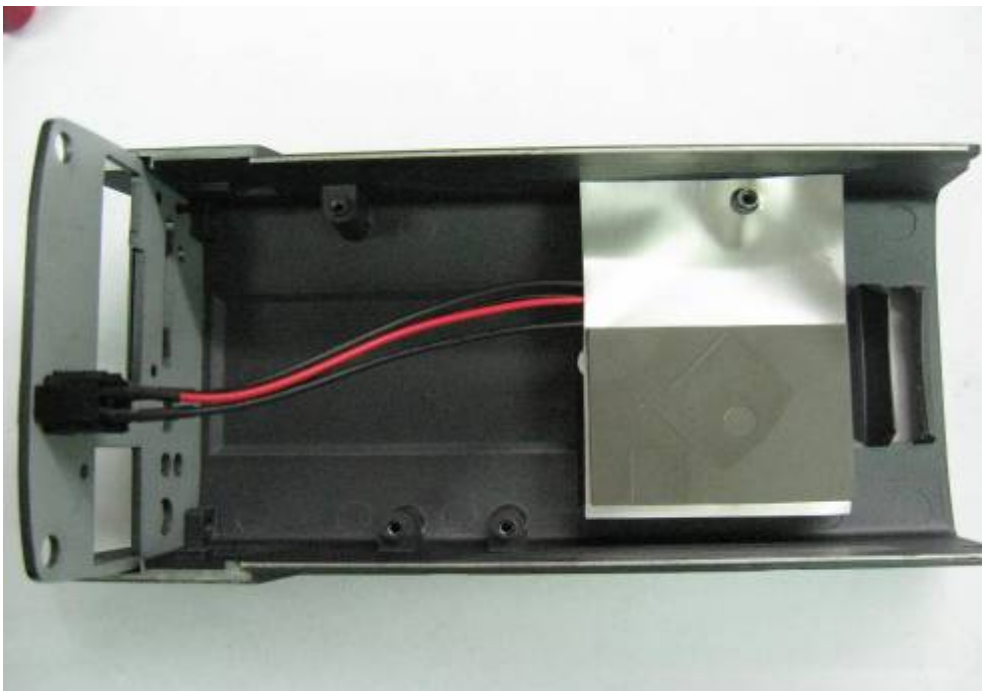
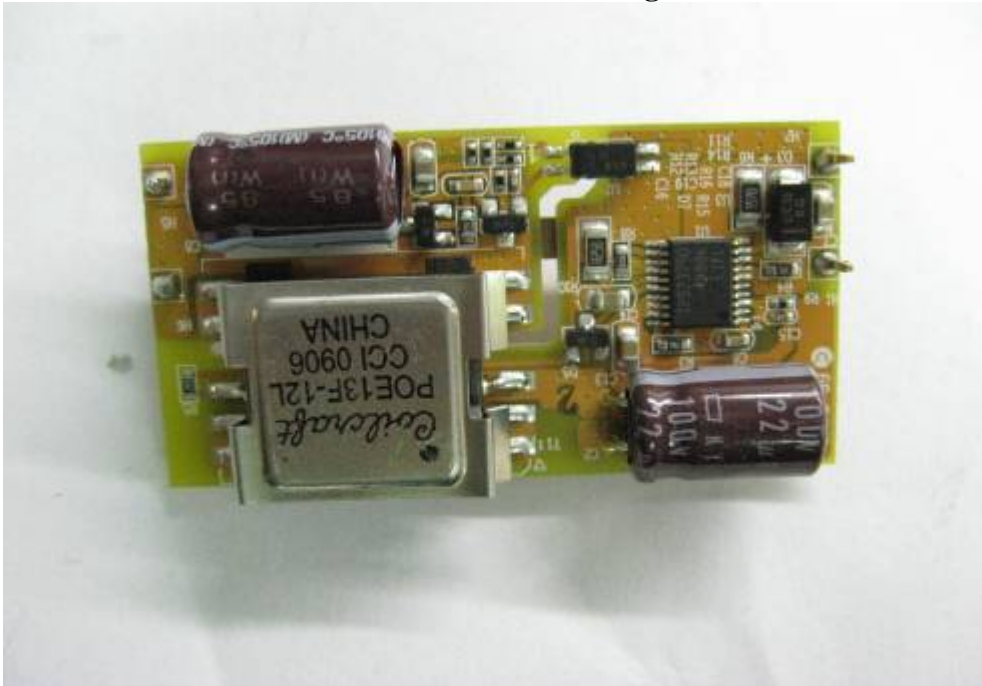












\*\* End of Report \*\*