

C-TICK CLASS B COMPLIANCE REPORT

Test Report No. : EM/2009/50059
Applicant : VIVOTEK INC.
Address of Applicant : 6F, No. 192, Lien-Cheng Rd., Chung-Ho City, Taipei County, Taiwan, R.O.C.
Manufacturer : VIVOTEK INC.
Address of Manufacturer : 5F, No.168, Lien-Cheng Rd., Chung-Ho City, Taipei County, Taiwan, R.O.C..

Equipment Under Test (EUT) :

Name : 2 Mega-pixel Day and Night Network Camera(2 Mega-pixel Network Camera)
Brand Name : VIVOTEK
Model No. : IP7161
Added Model(s) : IP7160

Standard : AS/NZS CISPR 22 : 2006 Class B

Date of Receipt : Mar. 06, 2009

Date of Test : Mar. 06 ~ May 21, 2009

Date of Issue : Jun. 05, 2009

| | |
|----------------------|-------------|
| Test Result : | PASS |
|----------------------|-------------|

In the configuration tested, the EUT complied with the standards specified above.

Remarks :

This report details the results of the testing carried out on one sample, the results contained in this test report do not relate to other samples of the same product. The manufacturer should ensure that all products in series production are in conformity with the product sample detailed in this report.

This report may only be reproduced and distributed in full. If the product in this report is used in any configuration other than that detailed in the report, the manufacturer must ensure the new system complies with all relevant standards. Any mention of SGS Taiwan Electronics & Communication Laboratory or testing done by SGS Taiwan Electronics & Communication Laboratory in connection with distribution or use of the product described in this report must be approved by SGS Taiwan Electronics & Communication Laboratory in writing.

| | | | |
|---------------------|--|-------------|----------------------|
| Test By: | <u>Wisely Huang</u> Wisely Huang(Engineer) | Date | <u>Jun. 05, 2009</u> |
| Perpared By: | <u>Jessie Li</u> Jessie Li(Clerk) | Date | <u>Jun. 05, 2009</u> |
| Approved By | <u>Victor Wen</u> Victor Wen(Assistant Manager) | Date | <u>Jun. 05, 2009</u> |

Unless otherwise stated the results shown in this test report refer only to the sample(s) tested. This test report cannot be reproduced, except in full, without prior written permission of the Company. 除非另有說明，此報告結果僅對測試之樣品負責。本報告未經本公司書面許可，不可部份複製。

This Test Report is issued by the Company under its General Conditions of Service printed overleaf or available on request and accessible at http://www.sgs.com/terms_and_conditions.htm. Attention is drawn to the limitation of liability, indemnification and jurisdiction issues defined therein. Any holder of this Test Report is advised that information contained hereon reflects the Company's findings at the time of its intervention only and within the limits of Client's instructions, if any. The Company's sole responsibility is to its Client and this document does not exonerate parties to a transaction from exercising all their rights and obligations under the transaction documents. Any unauthorized alteration, forgery or falsification of the content or appearance of this document is unlawful and offenders may be prosecuted to the fullest extent of the law.

Contents

| | |
|---|----------|
| 1. GENERAL INFORMATION..... | 4 |
| 1.1 CLIENT INFORMATION | 4 |
| 1.2 GENERAL DESCRIPTION OF EUT | 4 |
| 1.3 DETAILS OF EUT | 4 |
| 1.4 DESCRIPTION OF SUPPORT UNITS | 4 |
| 1.5 TEST METHODOLOGY AND CONFIGURATION..... | 5 |
| 1.6 STANDARDS APPLICABLE FOR TESTING | 5 |
| 1.7 DEVIATION FROM THE STANDARDS | 5 |
| 1.8 TEST SET-UP CONFIGURATION | 5 |
| 1.9 CABLE LIST | 6 |
| 1.10 SUMMARY OF RESULTS..... | 6 |
| 2.RADIO DISTURBANCE | 7 |
| 2.1 LIMITS OF CONDUCTED AND RADIATED EMISSION..... | 7 |
| 2.1.1 LIMIT OF RADIATED EMISSION OF CISPR 22 | 7 |
| 2.1.3 LIMIT OF CONDUCTED EMISSION OF CISPR 22 | 8 |
| 2.2 TEST RESULTS | 9 |
| 2.3 FREQUENCY RANGE..... | 9 |
| 2.4. TEST OF CONDUCTED EMISSION | 10 |
| 2.4.1 TEST INSTRUMENTS | 10 |
| 2.4.2 TEST SITE..... | 10 |
| 2.4.3 OPERATION OF EUT | 10 |
| 2.4.4 MEASUREMENT DATA | 11 |
| 2.5 TEST OF RADIATED EMISSION..... | 15 |
| 2.5.1 TEST INSTRUMENTS | 15 |
| 2.5.2 TEST SITE..... | 15 |
| 2.5.3 OPERATION OF EUT | 15 |
| 2.5.4 MEASUREMENT DATA | 16 |

Contents

| | |
|---|-----------|
| APPENDIX - CONSTRUCTIONAL DETAILS..... | 20 |
| TESTING PHOTOGRAPHS | 21 |
| PHOTOGRAPHS OF PRODUCT | 25 |

1. General Information

1.1 Client Information

Applicant : VIVOTEK INC.

Address : 6F, No. 192, Lien-Cheng Rd., Chung-Ho City, Taipei County, Taiwan, R.O.C.

Manufacturer : VIVOTEK INC.

Address of Manufacturer : 5F, No.168, Lien-Cheng Rd., Chung-Ho City, Taipei County, Taiwan, R.O.C.

1.2 General Description of EUT

Name : 2 Mega-pixel Day and Night Network Camera
(2 Mega-pixel Network Camera)

Brand Name : VIVOTEK

Model No. : IP7161

Added Model(s) : IP7160

Model Difference : Focal Length; F value; IR-Cut filter; Day & Night;
Interface; Power Requirement; Adjustment ring
are different

1.3 Details of EUT

Tested Power Supply : Model : 1. 3A-181WP12 ; 2. AH1812-S.

Input : AC 100~240V/50~60Hz

Output from adaptor : DC 12V/1.5A

Modes/Function : 1. EUT+ENG Adapter.2. ENT+JENTEC Adapter.
3. ENG Adapter+Lan.4. POE.

Worst case : ENT+JENTEC Adapter.

1.4 Description of Support Units

| PRODUCT | MANUFACTURER | MODEL NO. | SERIAL NO. |
|------------|--------------|-------------|----------------|
| Notebook | IBM | T43 | L3LKVL9 |
| Printer | HP | DJ3820 | CN34L181B1 |
| USB Mouse | IBM | MO28UO | 23-454022 |
| DVD Player | PHILIPS | DVP5986K/96 | AT2B0733215515 |
| Speaker | Multimedia | N/A | N/A |

1.5 Test Methodology And Configuration

Both conducted and radiated testing were performed according to the procedures in CISPR 22 : 2006 CLASS B
Radiated testing was performed at an antenna to EUT distance of 10m on an open area test site.

1.6 Standards Applicable for Testing

Table of tests to be carried out under CISPR 22 : 2006 CLASS B.

| Test Standards | Statue |
|-------------------|-------------------------------------|
| CISPR 22, Class B | <input checked="" type="checkbox"/> |

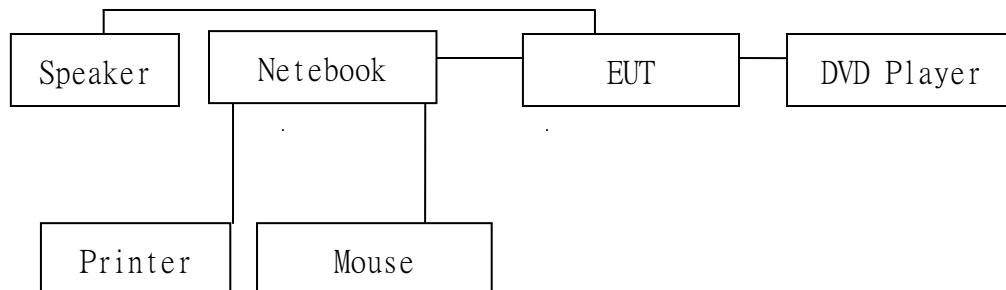
Indicates that the test is not applicable

Indicates that the test is applicable

1.7 Deviation from the Standards

No deviation.

1.8 Test Set-Up Configuration



1.9 Cable List

| Cable Type | Length | Shield |
|----------------------------------|--------|---------------|
| Earphone cable | 1.85m | Non-shielding |
| JENTEC Adapter cable | 1.85m | Non-shielding |
| ENG Adapter cable | 1.72m | Non-shielding |
| ENG Adapter(core near power out) | 1.8m | Non-shielding |

1.10 Summary of Results

| Highest Emission | | | | | |
|--------------------------|--------------------|--------|---------------------|----------------|------------|
| Standard | Test Type | Result | Phase/Polar. | Frequency(MHz) | Margin(dB) |
| CISPR 22:2006 Class B | Conducted Emission | PASS | Line (JENTEC) | 0.7092 | -4.32(AVG) |
| | | | Neutral (JENTEC) | 0.7087 | -3.99(AVG) |
| | Radiated Emission | PASS | Hor. | 603.3340 | -1.56(QP) |

2. Radio Disturbance

2.1 Limits Of Conducted And Radiated Emission

2.1.1 Limit Of Radiated Emission Of CISPR 22

| FREQUENCY (MHz) | Class A (at 10m)* | Class B (at 10m)* |
|--------------------|-------------------|-------------------|
| | dBuV/m | dBuV/m |
| 30-230 | 40 | 30 |
| 230-1000 | 47 | 37 |

* Detector Function : Quasi - Peak

Note : (1) The lower limit shall apply at the transition frequencies.

(2) Emission level (dBuV/m) = 20 log Emission level (uV/m).

(3) All emanation from a class A/B digital device or system, including any network of conductors and apparatus connected thereto, shall not exceed the level of field strengths specified above.

2.1.3 Limit Of Conducted Emission Of CISPR 22

| FREQUENCY (MHz) | Class A (dBuV) | | Class B (dBuV) | |
|--------------------|----------------|---------|----------------|---------|
| | Quasi - peak | Average | Quasi - peak | Average |
| 0.15 - 0.5 | 79 | 66 | 66 - 56 | 56 - 46 |
| 0.50 - 5.0 | 73 | 60 | 56 | 46 |
| 5.0 - 30.0 | 73 | 60 | 60 | 50 |

**Maximum permissible level of Common Mode Conducted Emission
(Telecommunication Ports)**

CLASS A

| FREQUENCY (MHz) | Voltage Limit(dBuV) | | Current Limit(dBuA) | |
|--------------------|---------------------|---------|---------------------|---------|
| | Quasi-peak | Average | Quasi-peak | Average |
| 0.15 - 0.5 | 97 - 87 | 84 - 74 | 53 - 43 | 40 - 30 |
| 0.5 - 30.0 | 87 | 74 | 43 | 30 |

CLASS B

| FREQUENCY (MHz) | Voltage Limit(dBuV) | | Current Limit(dBuA) | |
|--------------------|---------------------|---------|---------------------|---------|
| | Quasi-peak | Average | Quasi-peak | Average |
| 0.15 - 0.5 | 84 - 74 | 74 - 64 | 40 - 30 | 30 - 20 |
| 0.5 - 30.0 | 74 | 64 | 30 | 20 |

- Note : (1) The lower limit shall apply at the transition frequencies.
 (2) The limit decreases linearly with the logarithm of the frequency in the range 0.15 to 0.50 MHz.
 (3) All emanation from a class A/B digital device or system, including any network of conductors and apparatus connected thereto, shall not exceed the level of field strengths specified above.

Limits for radiated disturbance of Class A ITE at a measurement distance of 3m

| Frequency range GHz | Average Limit dB(μV/m) | Peak Limit dB(μV/m) |
|------------------------|---------------------------|------------------------|
| 1 to 3 | 56 | 76 |
| 3 to 6 | 60 | 80 |

Note : The lower limit applies at the transition frequency.

Limits for radiated disturbance of Class B ITE at a measurement distance of 3m

| Frequency range GHz | Average Limit dB(μV/m) | Peak Limit dB(μV/m) |
|------------------------|---------------------------|------------------------|
| 1 to 3 | 50 | 70 |
| 3 to 6 | 54 | 76 |

Note : The lower limit applies at the transition frequency.

2.2 Test Results

| | |
|--------------------|-------------|
| Conducted Emission | PASS |
| Radiated Emission | PASS |

2.3 Frequency Range

Conducted Emission : 150 kHz - 30 MHz
 Radiated Emission : 30 MHz - 1000 MHz

2.4. Test of Conducted Emission

2.4.1 Test Instruments

| Description | Manufacturer | Model No. | Serial No. | Date of Calibration |
|-------------------|---------------|-------------------------|------------|---------------------|
| EMI Test Receiver | ROHDE&SCHWARZ | ESCS 30 | 828985/004 | Sep. 16, 2008 |
| Coaxial Cables | N/A | WK CE Cable | N/A | Nov. 29, 2008 |
| L.I.S.N | Rolf-Heine | NNB-2/16Z | 99012 | Feb. 02, 2009 |
| L.I.S.N | FCC | FCC-LISN-50/250-25-2-01 | 04034 | Feb. 02, 2009 |

2.4.2 Test Site

SGS Taiwan LTD. Electronics & Communication Laboratory
No.134, Wu Kung Road. Wuku Industrial Zone, Taipei County 248, Taiwan (R.O.C.)

2.4.3 Operation of EUT

Operating Environment :

Temperature : 24 degree C Humidity : 61 %RH

Atmospheric Pressure : 1008 mBar

Operating the EUT :

1. Set down EUT with support units and turn on the power of all equipment.
2. Pre-test the EUT in all modes by each model, then figure the worst case out.
3. Tests under the normal operation pattern.

2.4.4 Measurement Data

ENG Adaptor Mode

L:

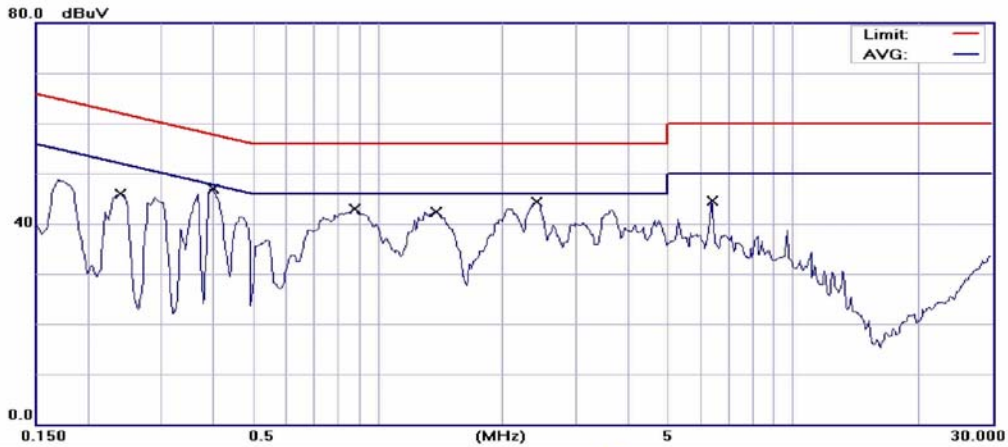


臺灣檢驗科技股份有限公司-電子暨通訊服務部
 台北縣五股工業區五工路134號
 電話：(02) 22993279 傳真：(02) 22982698

Conducted Emission Measurement

Date: 2009/5/20

Time: 下午 02:37:05



Site SGS CONDUCTED #1

Phase: L1

Temperature: 24 °C

Limit: CISPR22 Class B Conduction(QP)

Power: AC 240V/50Hz

Humidity: 61 %

EUT: 2 Mega-pixel day and Night Network Camera

M/N: IP7161

Note: Full System mode (ENG ADAPTER)

| No. | Mk. | Freq. MHz | Reading Level dBuV | Factor dB | Measure- ment dBuV | Limit dBuV | Over dB | Detector | Comment |
|-----|-----|--------------|--------------------------|--------------|--------------------------|---------------|------------|----------|---------|
| 1 | | 0.2400 | 45.83 | 0.11 | 45.94 | 62.10 | -16.16 | QP | |
| 2 | * | 0.4000 | 46.84 | 0.08 | 46.92 | 57.85 | -10.93 | QP | |
| 3 | | 0.8800 | 42.85 | 0.09 | 42.94 | 56.00 | -13.06 | QP | |
| 4 | | 1.3800 | 42.27 | 0.11 | 42.38 | 56.00 | -13.62 | QP | |
| 5 | | 2.4000 | 44.19 | 0.13 | 44.32 | 56.00 | -11.68 | QP | |
| 6 | | 6.3800 | 44.26 | 0.22 | 44.48 | 60.00 | -15.52 | QP | |

N:

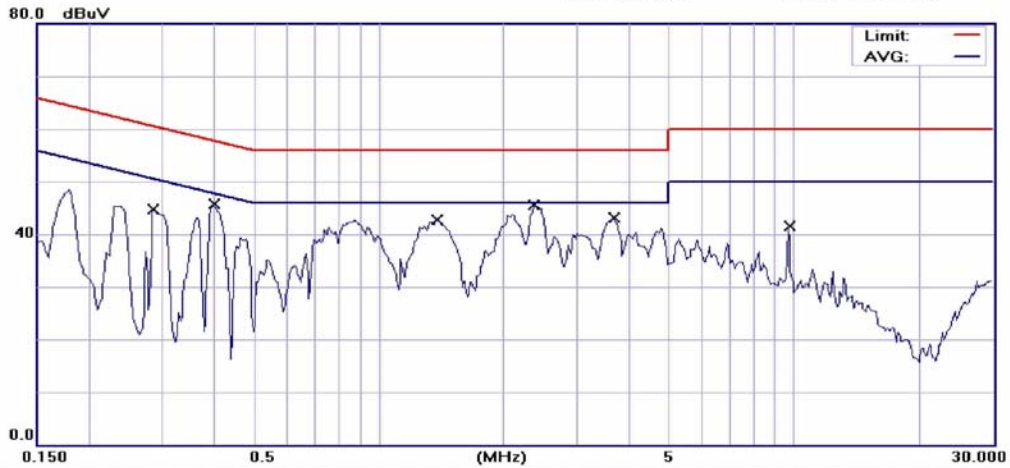


臺灣檢驗科技股份有限公司-電子暨通訊服務部
 台北縣五股工業區五工路134號
 電話：(02) 22993279 傳真：(02) 22982698

Conducted Emission Measurement

Date: 2009/5/20

Time: 下午 02:26:19



Site SGS CONDUCTED #1 Phase: **N** Temperature: 24 °C
 Limit: CISPR22 Class B Conduction(QP) Power: AC 240V/50Hz Humidity: 61 %
 EUT: 2 Mega-pixel day and Night Network Camera
 M/N: IP7161
 Note: Full System mode (ENG ADAPTER)

| No. | Mk. | Freq. MHz | Reading Level | | Factor | Measurement | | Limit | Over | Detector | Comment |
|-----|-----|--------------|---------------|------|--------|-------------|--------|-------|------|----------|---------|
| | | | dBuV | dB | | dBuV | dBuV | | | | |
| 1 | | 0.2850 | 44.50 | 0.13 | 44.63 | 60.67 | -16.04 | QP | | | |
| 2 | | 0.4000 | 45.51 | 0.11 | 45.62 | 57.85 | -12.23 | QP | | | |
| 3 | | 1.3800 | 42.55 | 0.13 | 42.68 | 56.00 | -13.32 | QP | | | |
| 4 | * | 2.3700 | 45.26 | 0.15 | 45.41 | 56.00 | -10.59 | QP | | | |
| 5 | | 3.6800 | 42.84 | 0.17 | 43.01 | 56.00 | -12.99 | QP | | | |
| 6 | | 9.7200 | 41.07 | 0.43 | 41.50 | 60.00 | -18.50 | QP | | | |

JENTEC Adaptor Mode

L:

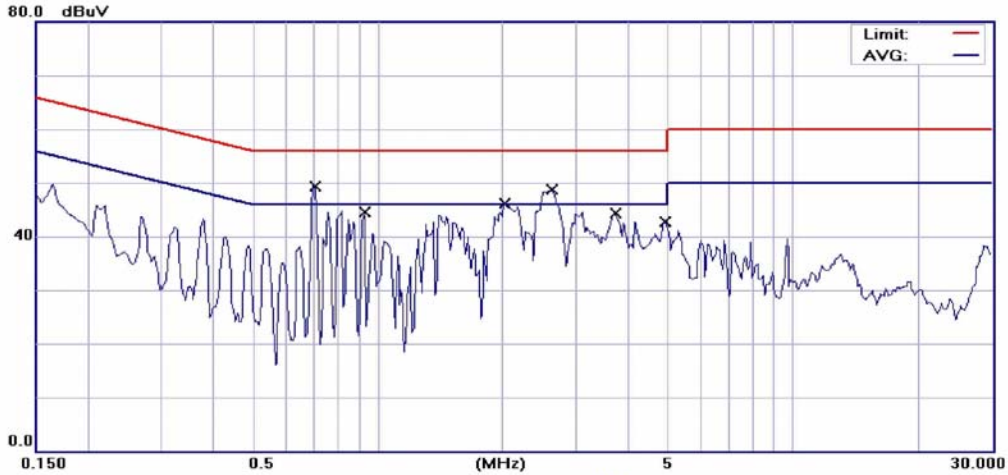


臺灣檢驗科技股份有限公司-電子暨通訊服務部
 台北縣五股工業區五工路134號
 電話：(02) 22993279 傳真：(02) 22982698

Conducted Emission Measurement

Date: 2009/5/20

Time: 下午 03:42:56



Site SGS CONDUCTED #1 Phase: **L1** Temperature: 24 °C
 Limit: CISPR22 Class B Conduction(QP) Power: AC 240V/50Hz Humidity: 61 %
 EUT: 2 Mega-pixel day and Night Network Camera
 M/N: IP7161
 Note: Full System mode (JENTEC ADAPTER)

| No. | Mk. | Reading | | Factor | Measure- ment | Limit | | Over | Detector | Comment |
|-----|-----|---------|-------|--------|------------------|-------|--------|------|----------|---------|
| | | Freq. | Level | | | dB | dBuV | | | |
| 1 | | 0.7092 | 48.10 | 0.08 | 48.18 | 56.00 | -7.82 | QP | | |
| 2 | * | 0.7092 | 41.60 | 0.08 | 41.68 | 46.00 | -4.32 | AVG | | |
| 3 | | 0.9280 | 42.90 | 0.09 | 42.99 | 56.00 | -13.01 | QP | | |
| 4 | | 0.9280 | 35.30 | 0.09 | 35.39 | 46.00 | -10.61 | AVG | | |
| 5 | | 2.0115 | 41.50 | 0.13 | 41.63 | 56.00 | -14.37 | QP | | |
| 6 | | 2.0115 | 28.80 | 0.13 | 28.93 | 46.00 | -17.07 | AVG | | |
| 7 | | 2.6217 | 45.40 | 0.14 | 45.54 | 56.00 | -10.46 | QP | | |
| 8 | | 2.6217 | 32.30 | 0.14 | 32.44 | 46.00 | -13.56 | AVG | | |
| 9 | | 3.7148 | 39.40 | 0.15 | 39.55 | 56.00 | -16.45 | QP | | |
| 10 | | 3.7148 | 25.50 | 0.15 | 25.65 | 46.00 | -20.35 | AVG | | |
| 11 | | 4.9039 | 36.90 | 0.16 | 37.06 | 56.00 | -18.94 | QP | | |
| 12 | | 4.9039 | 22.90 | 0.16 | 23.06 | 46.00 | -22.94 | AVG | | |

N:

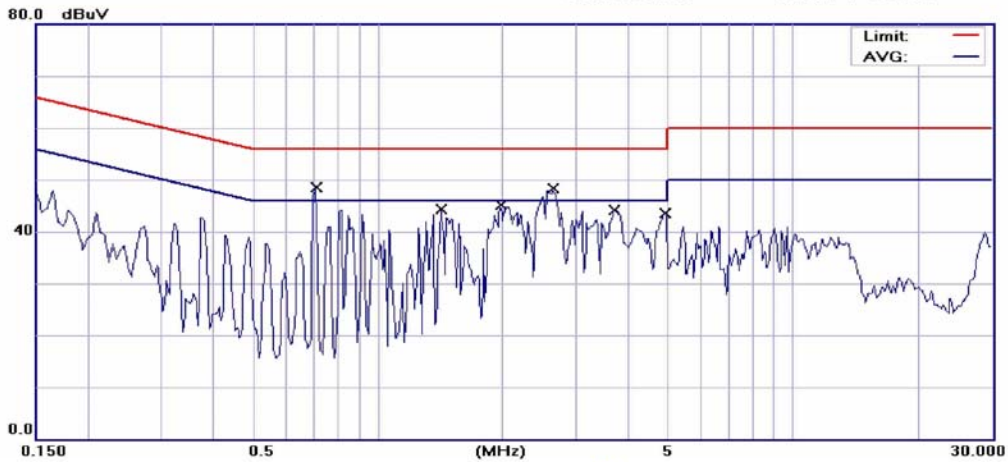


臺灣檢驗科技股份有限公司-電子暨通訊服務部
 台北縣五股工業區五工路134號
 電話：(02) 22993279 傳真：(02) 22982698

Conducted Emission Measurement

Date: 2009/5/20

Time: 下午 03:35:06



Site SGS CONDUCTED #1

Phase: N

Temperature: 24 °C

Limit: CISPR22 Class B Conduction(QP)

Power: AC 240V/50Hz

Humidity: 61 %

EUT: 2 Mega-pixel day and Night Network Camera

M/N: IP7161

Note: Full System mode (JENTEC ADAPTER)

| No. | Mk. | Freq. | Reading Level | Factor | Measurement | Limit | Over | Detector | Comment |
|-----|-----|--------|---------------|--------|-------------|-------|--------|----------|---------|
| | | MHz | dBuV | dB | dBuV | dBuV | dB | | |
| 1 | | 0.7087 | 47.30 | 0.11 | 47.41 | 56.00 | -8.59 | QP | |
| 2 | * | 0.7087 | 41.90 | 0.11 | 42.01 | 46.00 | -3.99 | AVG | |
| 3 | | 1.4052 | 40.00 | 0.13 | 40.13 | 56.00 | -15.87 | QP | |
| 4 | | 1.4052 | 26.60 | 0.13 | 26.73 | 46.00 | -19.27 | AVG | |
| 5 | | 1.9495 | 39.30 | 0.15 | 39.45 | 56.00 | -16.55 | QP | |
| 6 | | 1.9495 | 25.10 | 0.15 | 25.25 | 46.00 | -20.75 | AVG | |
| 7 | | 2.6307 | 41.70 | 0.16 | 41.86 | 56.00 | -14.14 | QP | |
| 8 | | 2.6307 | 25.50 | 0.16 | 25.66 | 46.00 | -20.34 | AVG | |
| 9 | | 3.7295 | 36.90 | 0.17 | 37.07 | 56.00 | -18.93 | QP | |
| 10 | | 3.7295 | 20.50 | 0.17 | 20.67 | 46.00 | -25.33 | AVG | |
| 11 | | 4.8662 | 39.30 | 0.18 | 39.48 | 56.00 | -16.52 | QP | |
| 12 | | 4.8662 | 26.40 | 0.18 | 26.58 | 46.00 | -19.42 | AVG | |

2.5 Test of Radiated Emission

2.5.1 Test Instruments

| Description | Manufacturer | Model No. | Serial No. | Date of Calibration |
|-------------------|---------------|-------------|------------|---------------------|
| EMI Test Receiver | ROHDE&SCHWARZ | ESCI | 100335 | Feb. 05, 2009 |
| RF-Amplifier | Agilent | 8447D | 2944A09469 | Nov. 29, 2008 |
| Broadband Antenna | SCHWAZBECK | VULB9160 | 9160-3224 | Mar. 03, 2009 |
| Coaxial Cables | N/A | OS RE Cable | N/A | Nov. 29, 2008 |
| Antenna Master | HD GmbH | MA 240 | 240/515 | N/A |
| Turn Table | HD GmbH | DT420 | 420/542 | N/A |
| Controller | HD GmbH | HD 100 | 100/589 | N/A |

2.5.2 Test Site

SGS Taiwan LTD. Electronics & Communication Laboratory
No. 29, Pau-Tou-Tsuo Valley, Chia-Pau Tsuen, Linkou Hsiang, Taipei County 244,
Taiwan (R.O.C.)

2.5.3 Operation of EUT

Operating Environment :

Temperature : 22 degree C Humidity :59 %RH

Atmospheric Pressure : 1009 mBar

Operating the EUT :

1. Set down EUT with support units and turn on the power of all equipment.
2. Pre-test the EUT in all modes by each model, then figure the worst case out.
3. Tests under the normal operation pattern.

2.5.4 Measurement Data

ENG Adaptor Mode

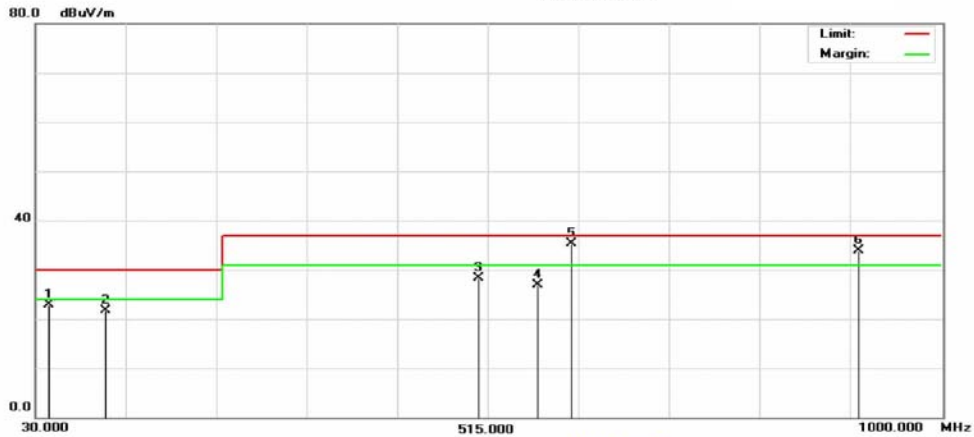
2.5.5.1 Horizontal polarization



臺灣檢驗科技股份有限公司 - 電子暨通訊實驗室
 Address : 台北縣五股工業區五工路 134 號
 Tel:02-2299-3279 Fax:02-2298-2698

Radiated Emission Measurement

Date: 2009/5/12



Site : 10M Open Site Polarization: **Horizontal** Temperature: 22 °C
 Limit: CISPR22 Class B 10M Radiation Power: AC 120V/60Hz Humidity: 59%
 EUT: 2 Mega-pixel day and Night Network Camera |
 M/N: IP7161
 Note: Full System Operation (ENG Adapter)

| No. | Mk. | Freq. MHz | Reading Level dBuV | Factor dB | Measure- ment dBuV/m | Limit dBuV/m | Over dB | Detector | Comment |
|-----|-----|--------------|--------------------------|--------------|----------------------------|-----------------|------------|----------|---------|
| 1 | | 42.2510 | 40.25 | -17.42 | 22.83 | 30.00 | -7.17 | QP | |
| 2 | | 103.7550 | 40.13 | -18.40 | 21.73 | 30.00 | -8.27 | QP | |
| 3 | | 503.4550 | 36.36 | -7.96 | 28.40 | 37.00 | -8.60 | QP | |
| 4 | | 566.0750 | 33.39 | -6.58 | 26.81 | 37.00 | -10.19 | QP | |
| 5 | * | 603.3340 | 40.63 | -5.28 | 35.35 | 37.00 | -1.65 | QP | |
| 6 | ! | 910.5710 | 33.16 | 0.78 | 33.94 | 37.00 | -3.06 | QP | |

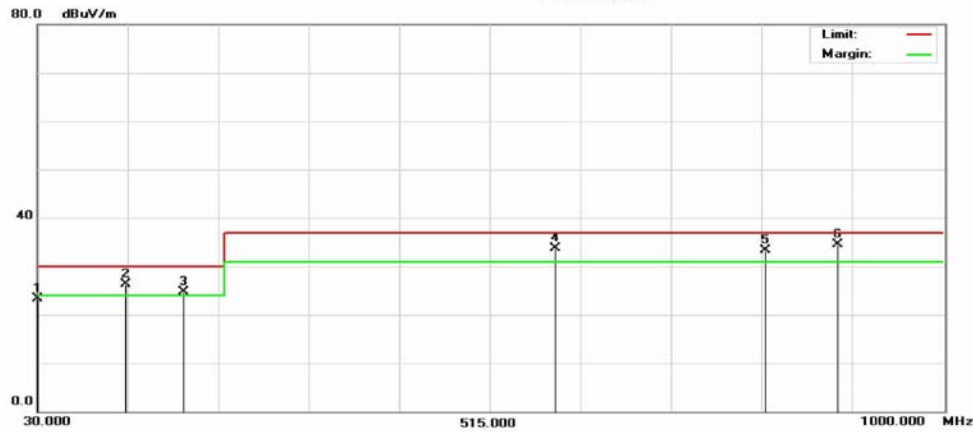
2.5.5.2 Vertical polarization



臺灣檢驗科技股份有限公司 -電子暨通訊實驗室
 Address : 台北縣五股工業區五工路 134 號
 Tel:02-2299-3279 Fax:02-2298-2698

Radiated Emission Measurement

Date: 2009/5/12



Site : 10M Open Site Polarization: **Vertical** Temperature: 22 °C
 Limit: CISPR22 Class B 10M Radiation Power: AC 240V/50Hz Humidity: 59%
 EUT: 2 Mega-pixel day and Night Network Camera
 M/N: IP7161
 Note: Full System Operation (ENC Adapter)

| No. | Mk. | Freq. MHz | Reading Level dBuV | Factor dB | Measure- ment dBuV/m | Limit dBuV/m | Over dB | Detector | Comment |
|-----|-----|--------------|--------------------------|--------------|----------------------------|-----------------|------------|----------|---------|
| 1 | | 31.6250 | 40.99 | -17.68 | 23.31 | 30.00 | -6.69 | QP | |
| 2 | ! | 123.5250 | 42.50 | -16.17 | 26.33 | 30.00 | -3.67 | QP | |
| 3 | ! | 185.3640 | 40.98 | -16.26 | 24.72 | 30.00 | -5.28 | QP | |
| 4 | ! | 583.8850 | 39.65 | -5.93 | 33.72 | 37.00 | -3.28 | QP | |
| 5 | ! | 810.7500 | 34.56 | -1.21 | 33.35 | 37.00 | -3.65 | QP | |
| 6 | * | 886.6750 | 34.22 | 0.27 | 34.49 | 37.00 | -2.51 | QP | |

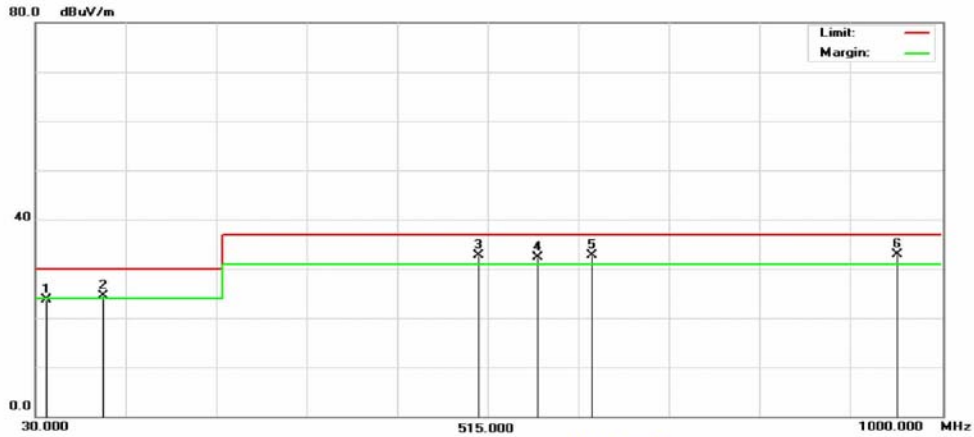
JENTEC Adaptor Mode
2.5.5.3 Horizontal polarization



臺灣檢驗科技股份有限公司 - 電子暨通訊實驗室
Address : 台北縣五股工業區五工路 134 號
Tel:02-2299-3279 Fax:02-2298-2698

Radiated Emission Measurement

Date: 2009/5/12



Site : 10M Open Site Polarization: **Horizontal** Temperature: 22 °C
Limit: CISPR22 Class B 10M Radiation Power: AC 240V/50Hz Humidity: 59%
EUT: 2 Mega-pixel day and Night Network Camera
M/N: IP7161
Note: Full System Operation (JENTEC Adapter)

| No. | Mk. | Freq. MHz | Reading Level dBuV | Factor dB | Measure- ment dBuV/m | Limit dBuV/m | Over dB | Detector | Comment |
|-----|-----|--------------|--------------------------|--------------|----------------------------|-----------------|------------|----------|---------|
| 1 | | 41.1240 | 41.36 | -17.57 | 23.79 | 30.00 | -6.21 | QP | |
| 2 | ! | 101.3360 | 43.36 | -18.95 | 24.41 | 30.00 | -5.59 | QP | |
| 3 | ! | 503.4600 | 40.65 | -7.96 | 32.69 | 37.00 | -4.31 | QP | |
| 4 | ! | 566.0760 | 38.89 | -6.58 | 32.31 | 37.00 | -4.69 | QP | |
| 5 | ! | 625.3100 | 37.56 | -4.90 | 32.66 | 37.00 | -4.34 | QP | |
| 6 | * | 953.5630 | 31.26 | 1.65 | 32.91 | 37.00 | -4.09 | QP | |

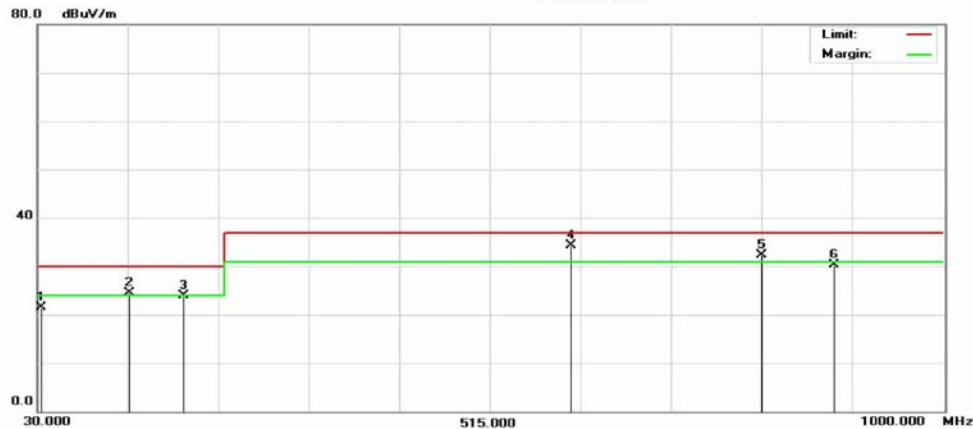
2.5.5.4 Vertical polarization



臺灣檢驗科技股份有限公司 -電子暨通訊實驗室
 Address : 台北縣五股工業區五工路 134 號
 Tel:02-2299-3279 Fax:02-2298-2698

Radiated Emission Measurement

Date: 2009/5/12



Site : 10M Open Site Polarization: **Vertical** Temperature: 22 °C
 Limit: CISPR22 Class B 10M Radiation Power: AC 240V/50Hz Humidity: 59%
 EUT: 2 Mega-pixel day and Night Network Camera
 M/N: IP7161
 Note: Full System Operation (JENTEC Adapter)

| No. | Mk. | Freq. | Reading | Factor | Measurement | Limit | Over | Detector | Comment |
|-----|-----|----------|---------|--------|-------------|--------|-------|----------|---------|
| | | MHz | dBuV | dB | dBuV/m | dBuV/m | dB | | |
| 1 | | 34.6240 | 39.36 | -17.91 | 21.45 | 30.00 | -8.55 | QP | |
| 2 | ! | 127.5500 | 40.26 | -15.80 | 24.46 | 30.00 | -5.54 | QP | |
| 3 | | 186.6330 | 40.32 | -16.45 | 23.87 | 30.00 | -6.13 | QP | |
| 4 | * | 600.9860 | 39.65 | -5.32 | 34.33 | 37.00 | -2.67 | QP | |
| 5 | ! | 805.3600 | 33.63 | -1.30 | 32.33 | 37.00 | -4.67 | QP | |
| 6 | | 881.6600 | 30.23 | 0.15 | 30.38 | 37.00 | -6.62 | QP | |

APPENDIX - Constructional Details

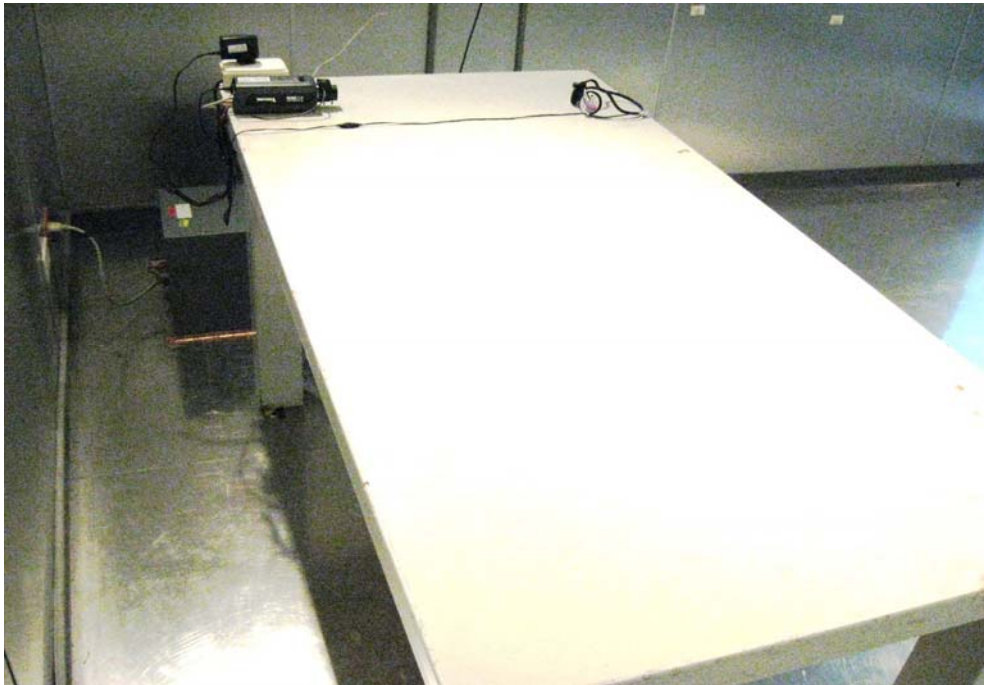
| | |
|-----------------------------|-------|
| Testing Photographs..... | 21-24 |
| Photographs of Product..... | 25-40 |

Testing Photographs

**CE Testing Set-up
ENG Adaptor Mode.**



JENTEC Adaptor Mode



RE Testing Set-up
ENG Adaptor Mode.



JENTEC Adaptor Mode.



Photographs of Product

Exterior:

Model No. : IP7161













Added Model(s) : IP7160

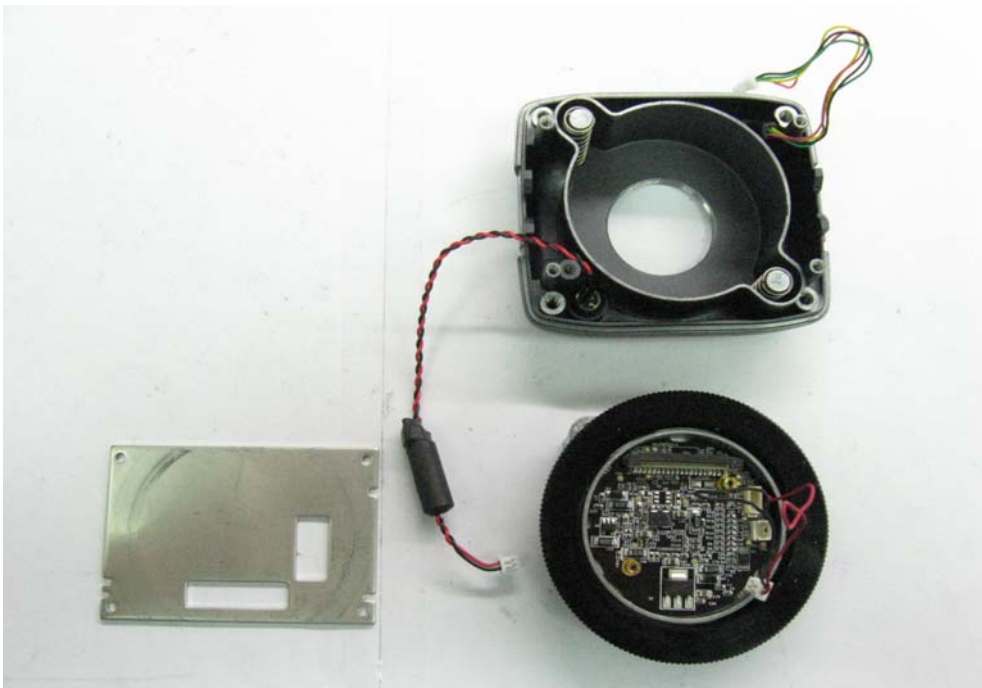
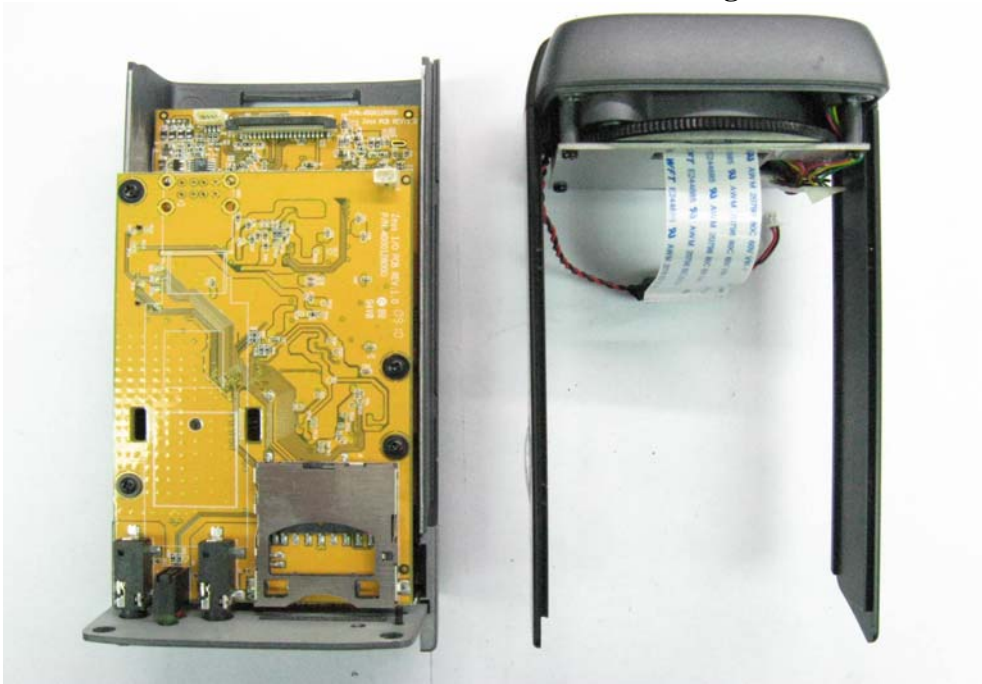




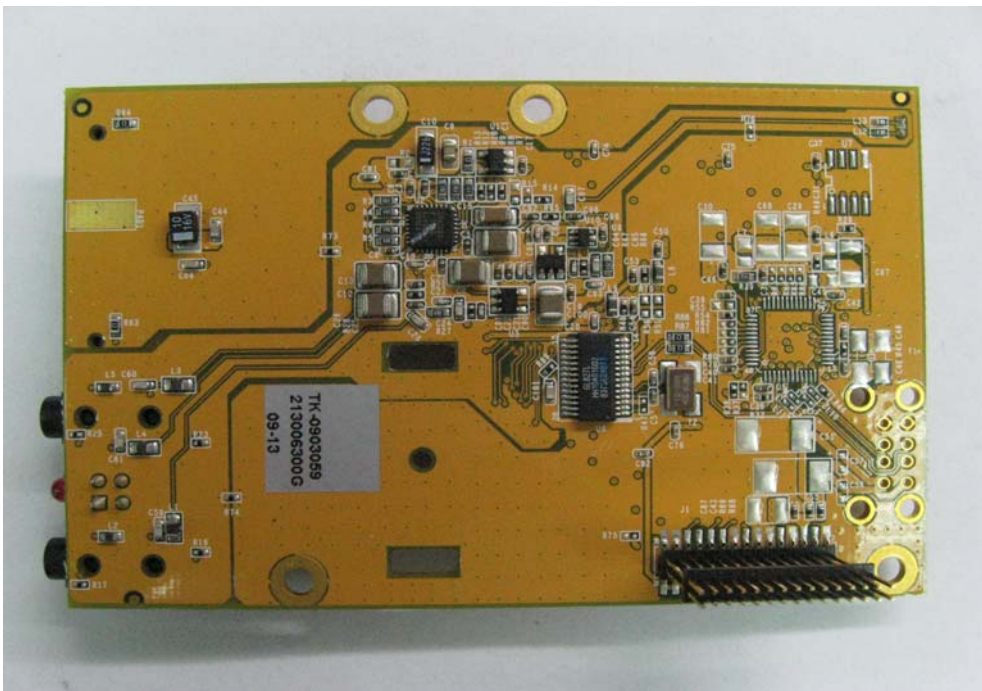
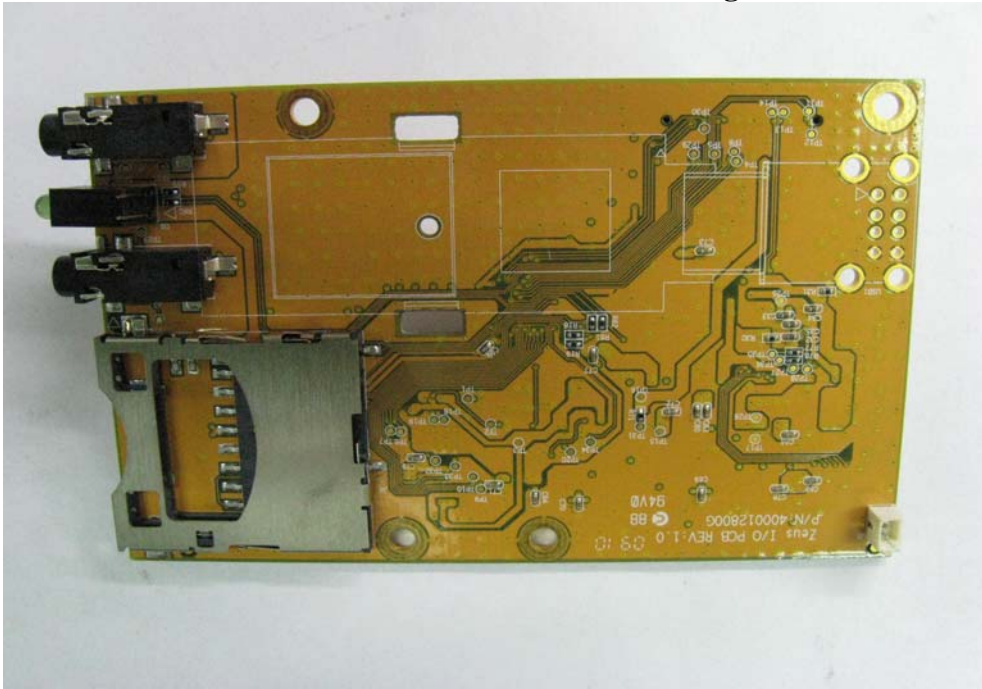


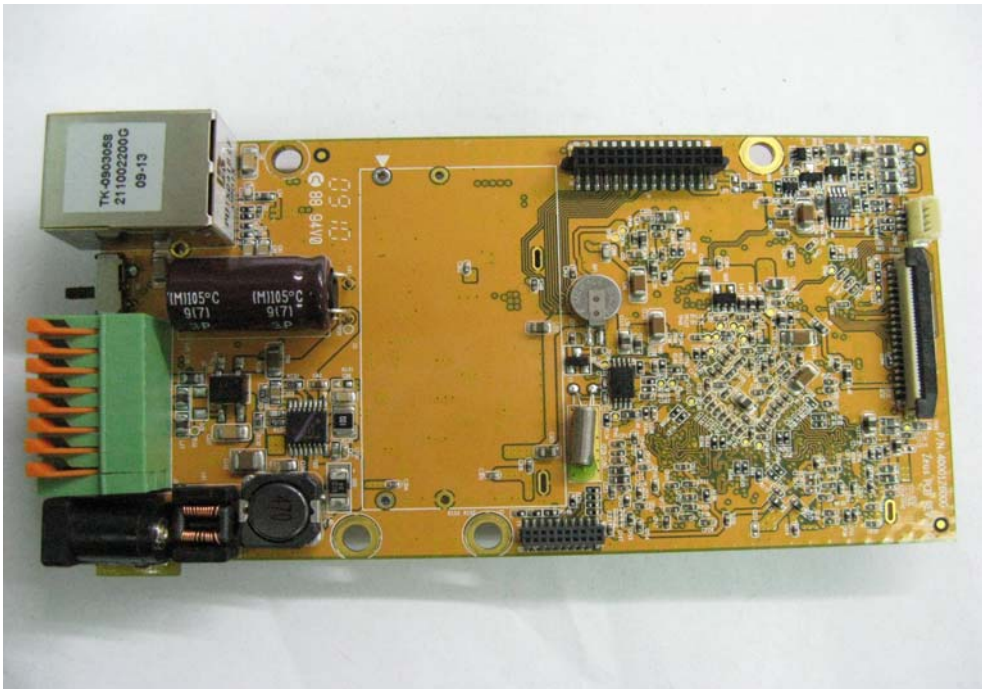
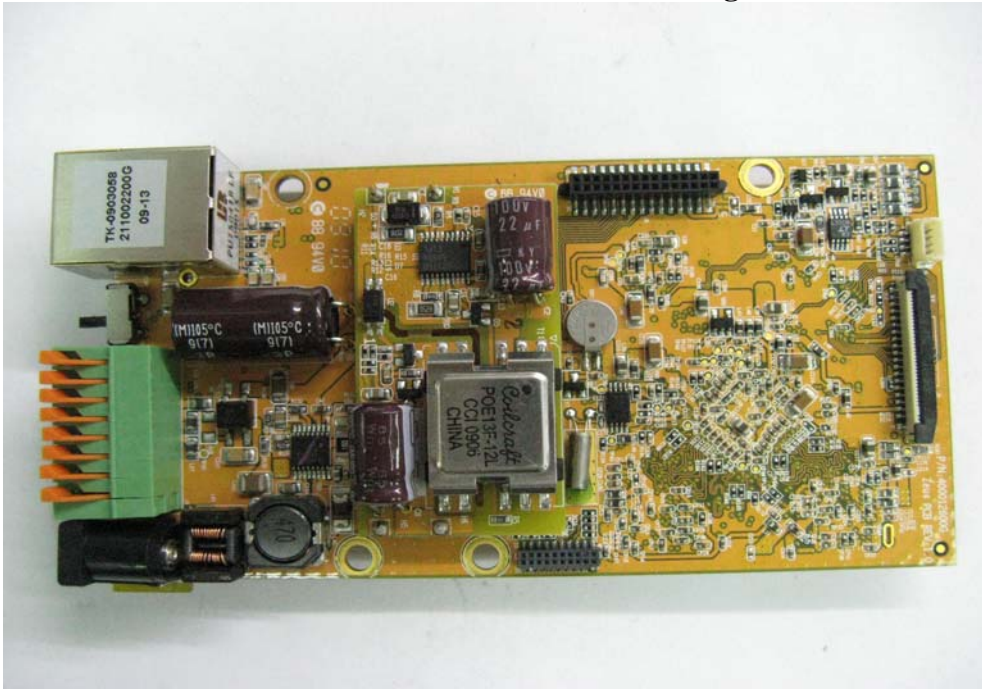
Interior:

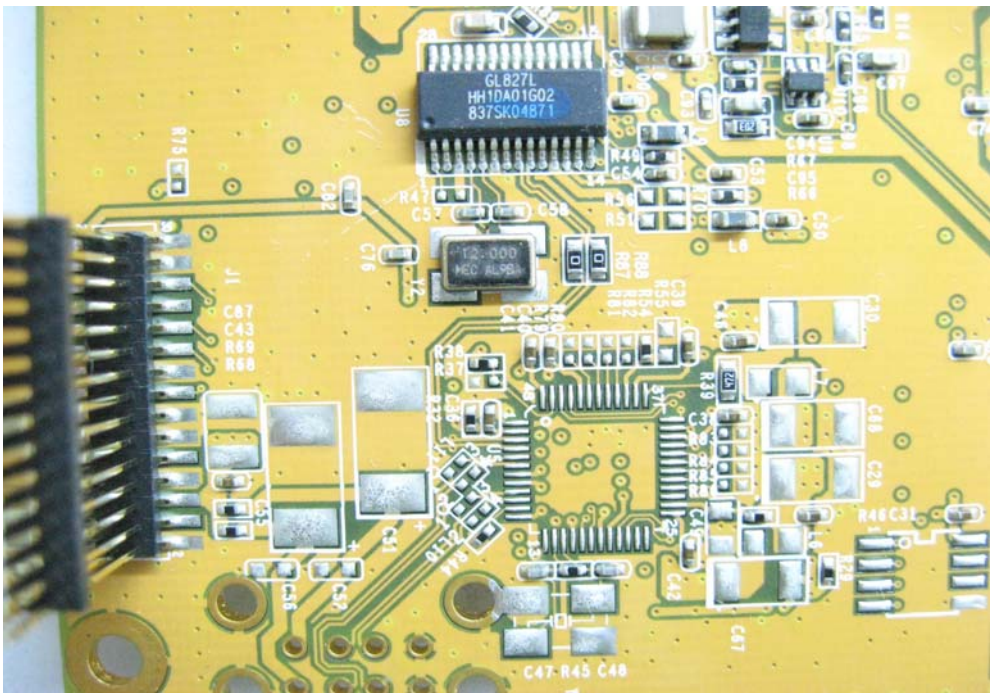
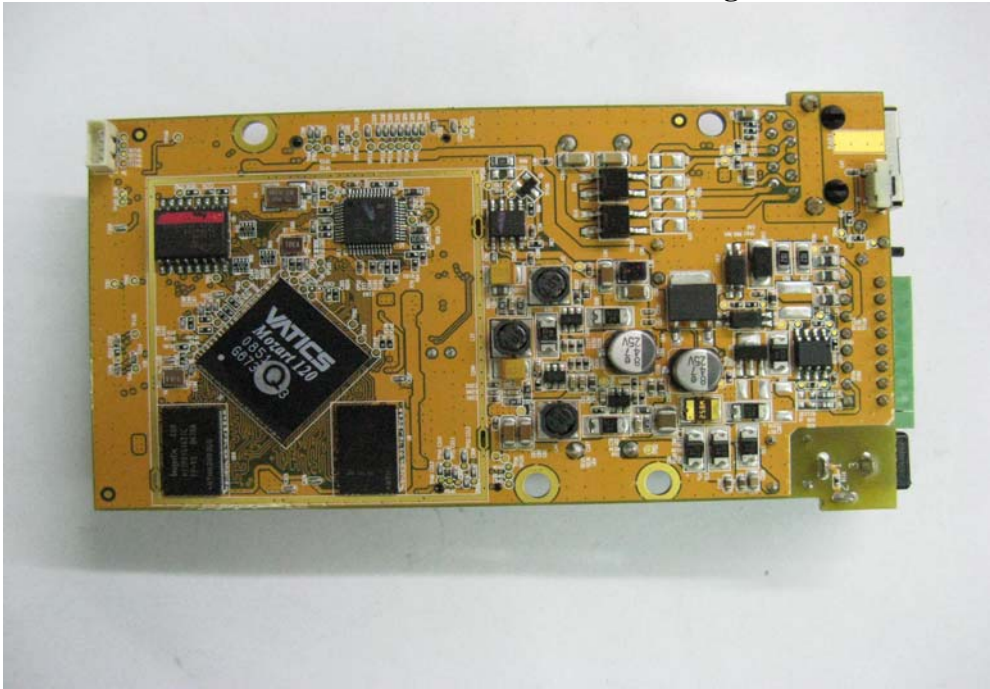


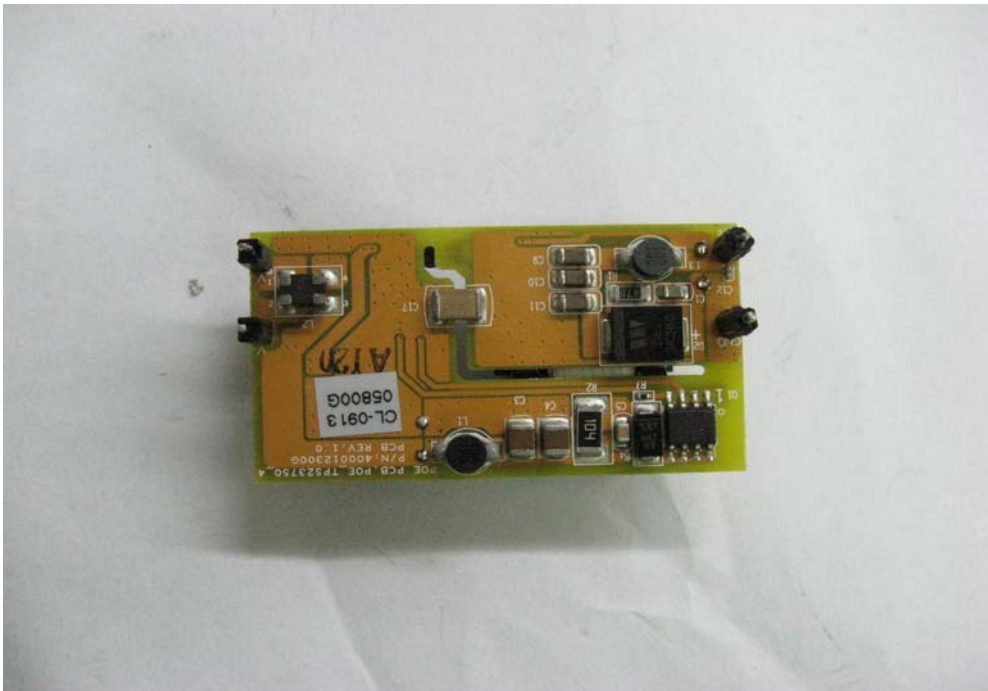
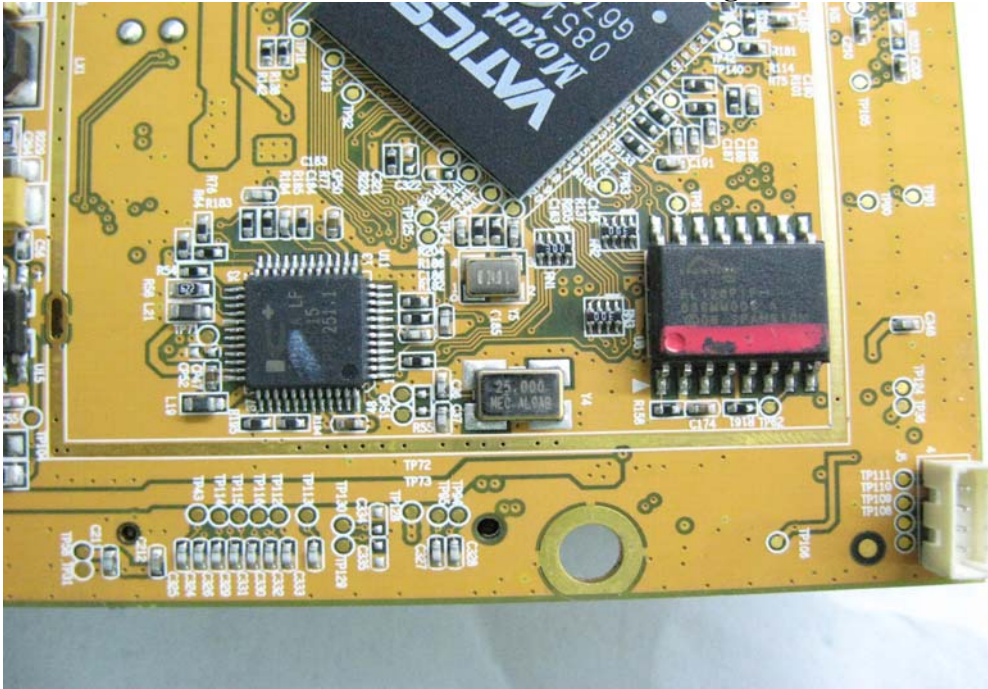


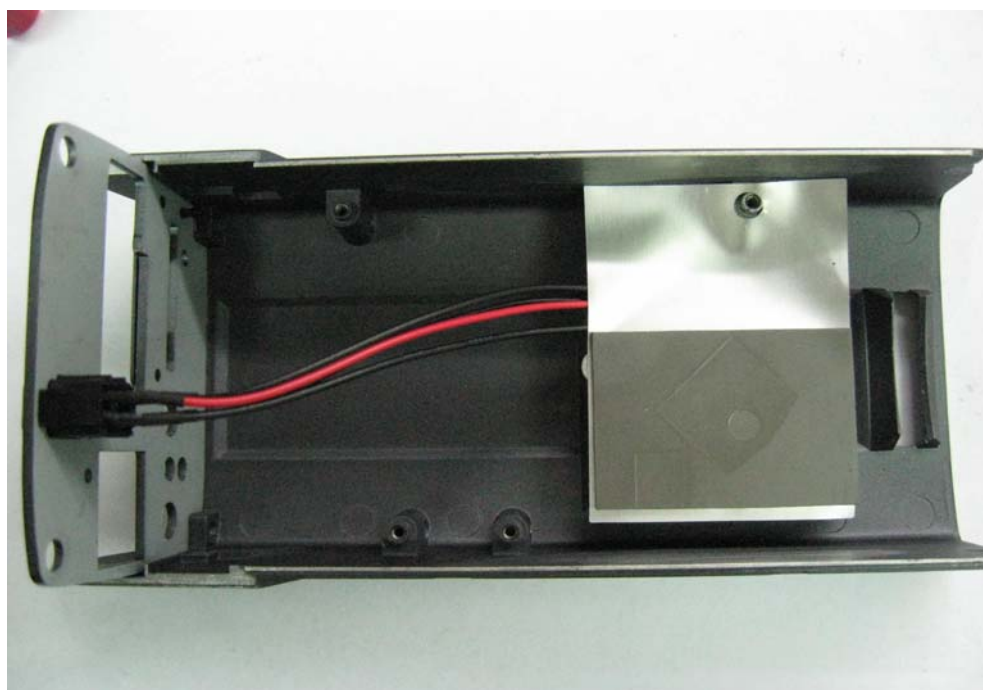












** End of Report **