

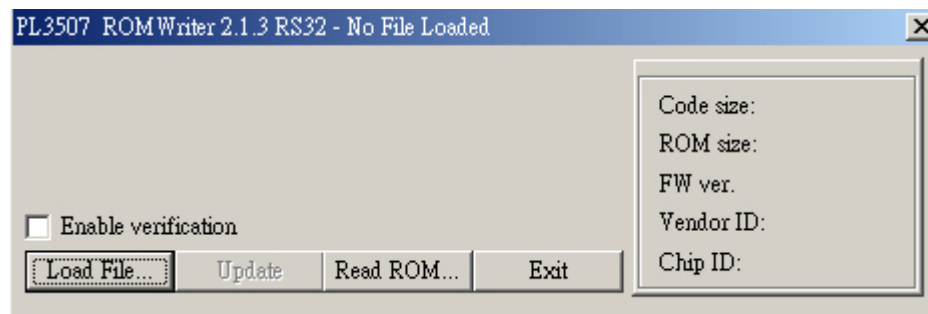
# Firmware Update for Combo External Case

**Main Chipset : PL-3507**

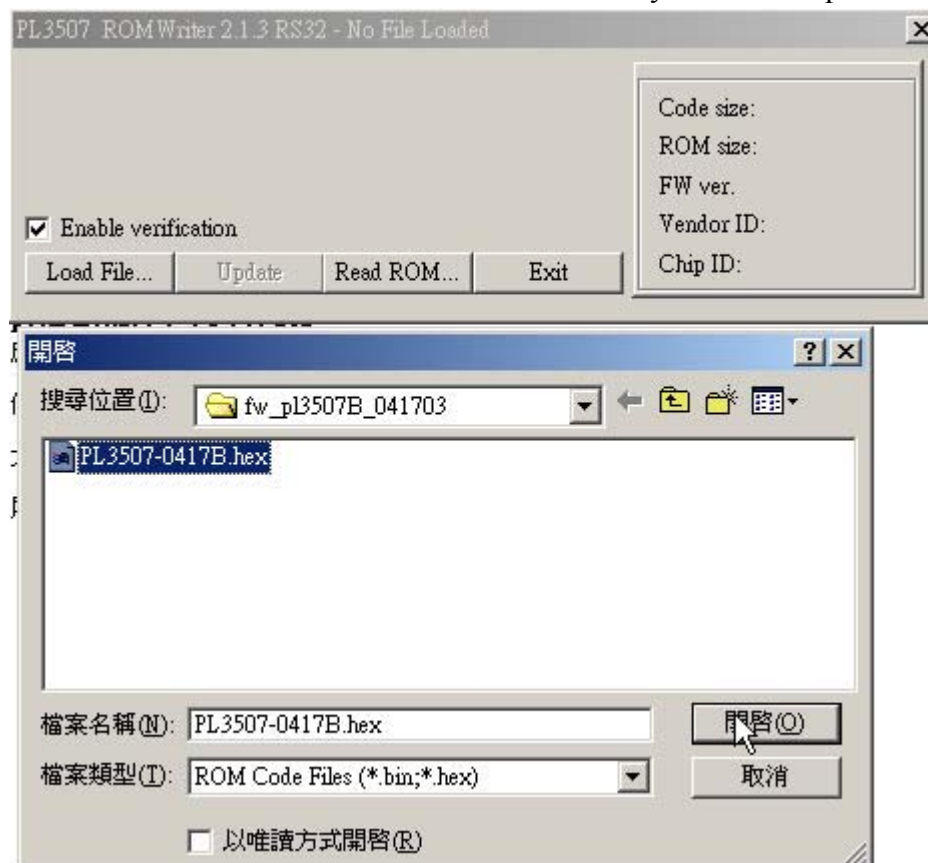
OS : Win98SE/Win2000

Step 1 . Connect your combo external case with drive to the USB port of your Computer.

Step 2. When the combo external drive is detected by system, run the update program “ROMWriter2.1.3RS32.exe”



Step3 Click on the “Load File” and select the firmware that you want to update.



Step 4 Check the “enable verification” and click on update , the program will start to update the firmware that you choice .

Step 5 **After finish the update , restart your combo external case to make it effective.**