



OSE-201 IP Camera Quick Installation Guide



Product: OSE-201 IP Camera
Document: Quick Installation Guide
Published: August 01, 2006
Version: 1.10
Web: <http://www.oosec.com>
Service Email: service@oosec.com

Copyright c 2006 TWSAFE Corp., All rights reserved.

1.	Product Brief Introduction	2
1.1	Quick Installation Guide (QIG)	2
1.2	Product & Accessories	3
1.3	System Reference Structure	4
1.3.1	Required Additional Accessories	4
1.4	Hardware Interface Description	5
1.5	How to Install Hardware	7
2.	Software Installation	9
2.1	Start CD Software Installon	9
3.	IP Address Setup	13
3.1	Hardware connection	13
3.2	Network and Internet Connections	13
3.3	Network Security Setup	16
3.3.1	Security/Trusted Sites Setup	16
4.	IE Login	19
4.1	Login Authentication	19
4.2	IE Main Page	20
5.	IP Installer	21
6.	Limited Warranty	25
7.	FCC Safety	26
8.	Country List of NTSC/PAL	27

1.1 Quick Installation Guide (QIG)

The purpose of this QIG is to guide you to go through setup procedure of this system smoothly in order to view remote video images of video server on IE. User can view details of setup functions on IE Web pages and multi-camera management software in product user's manual.

1.2 Product & Accessories

Please check packing contents thoroughly after opening this pack. Contact your reseller while item is missing.



Quick Installation Guide



OSE-301*1



Software CD ROM*1



DC Power Output
Cable (DC-12V)



Adapter*1



Microphone/Speaker 2 in
1 cable*1



L type wrench*1



Screws *4



I/O Connector*1

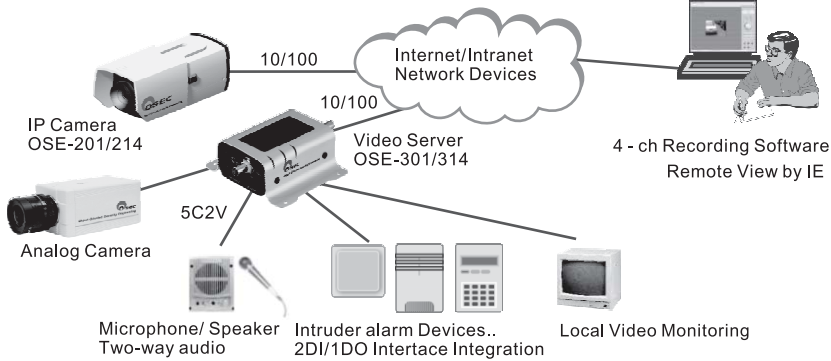


Lens*1







Bracket *1

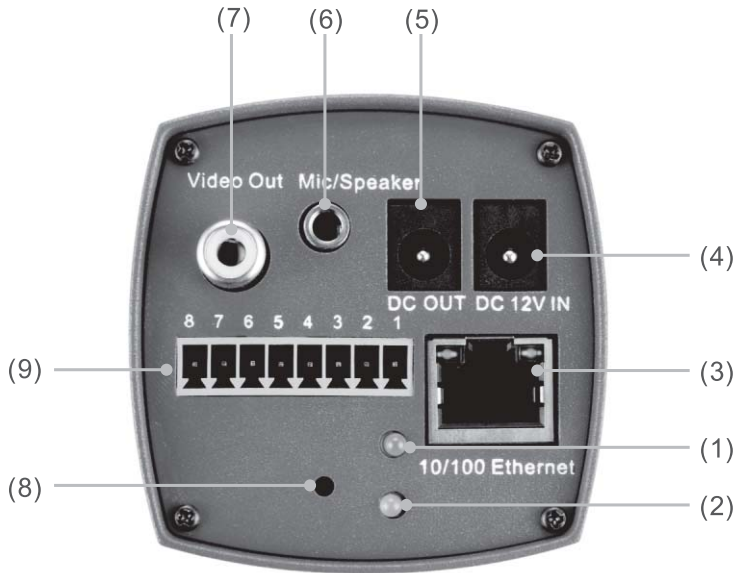
1.3 System Reference Structure



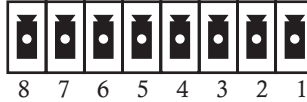
1.3.1 Required Additional Accessories

<ul style="list-style-type: none"> ● Alarm/Access control: DI/DO to connect urgent button, sensor, or buzzer for security integration. 	 Alarm(option)
<ul style="list-style-type: none"> ● UTP cables: Prepare a parallel UTP cable with RJ45 connectors to connect network equipment e.g. switch/hub, IP sharing, router. Use a cross-over cable if directly connects to PC. 	 Rj45 UTP cable
<ul style="list-style-type: none"> ● Multi-port Recording Requirement: CPU Intel P4 3.2, 1G memory, 128 MB VGA, OS: Microsoft XP Sp1 	 Personal computer
<ul style="list-style-type: none"> ● Audio: Microphone and speaker 	 Microphone/speaker (option)
<ul style="list-style-type: none"> ● XDSL broadband Internet connection 	Internet

1.4 Hardware Interface Description



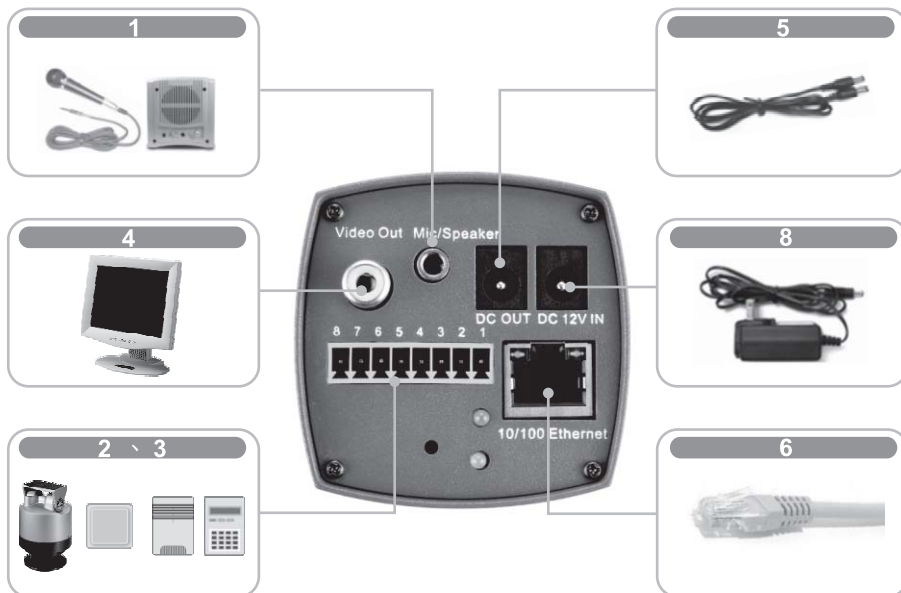
- 1.Power:** Green light-on indicates power is on.
- 2.Start-up indicator:** Green light-on indicates system is on.
- 3.10/100 Ethernet:** Connect to network by using standard RJ45 connector.
- 4.DC12V IN:** Connect with attached adapter.
- 5.DC OUT:** DC 12V power output with maximum 750mA limited.
- 6.Microphone/Speaker:** Use attached audio cord to connect audio device both audio-in and audio-out.
- 7.Video Out:** RCA output port for better image adjustment while installing on-site camera only.
- 8.Default:** Insert this button by using attached L-type wrench to restore manufacturing default values.
- 9.I/O & RS-485 Connectors:**



Port		Function	Remark
1	DI1+	DI 1 Positive	Max. 50mA, 12VDC
2	DI1-	DI 1 Negative	
3	DI2+	DI 2 Positive	Max. 50mA, 12VDC
4	DI2-	DI 2 Negative	
5	DO+	DO Positive	Max. 50mA, 80VDC
6	DO-	DO Negative	
7	RS485+	TX/RX	Non-inverting
8	Rs485-	TX/RX	Inverting

Remark: User can use pan-tilt-zoom images of camera by connecting RS-485. If distance is too far, please use additional signal amplifier.

1.5 How to Install Hardware



Step 1: Connect Microphone/speaker.

Step 2: Connect security devices into digital inputs/output.

Step 3: Connect pan-tilt device into RS-485.

Step 4: Use 5C2V coaxial cable to connect TV/monitor.

Step 5: Connect camera DC-12V power into product with maximum power output 750mA.

Step 6: Use RJ-45 UTP cable to connect network equipment.

Step 7: Plug-in powers of all optional connected devices.

Step 8: Plug-in power of video server.

Step 9: Confirm two green light indicators are on.

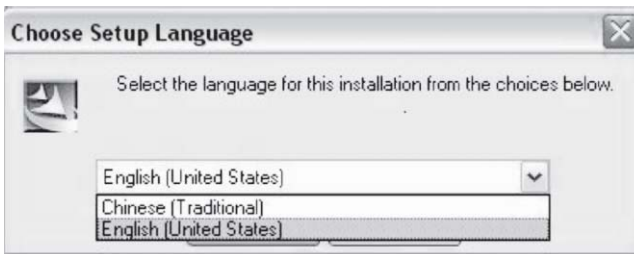
Step 10: Start-up PC to start application software installation.

2.1 Start CD Software Installation

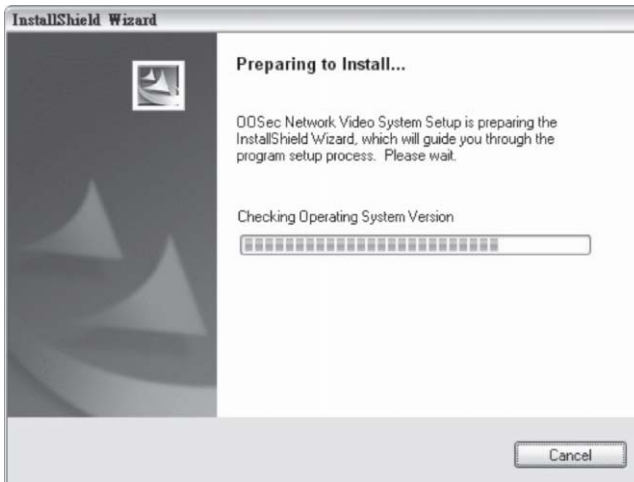
Before Installation: Insert the CD attached in the package to CD-ROM reader in your computer, system will start its auto-execution procedure.

Software Installation Sequence

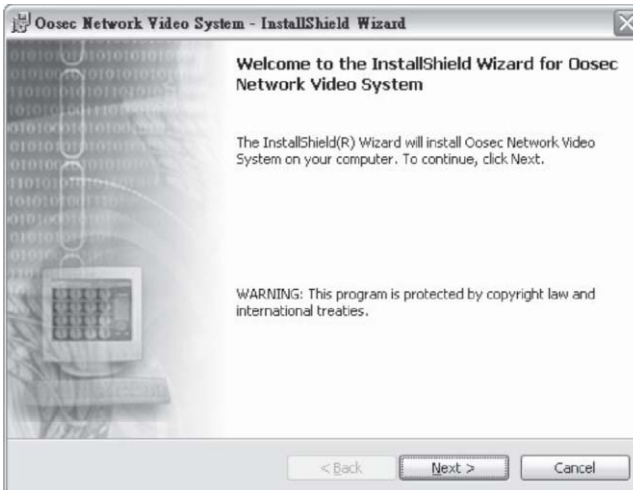
Language: System supports English and Chinese selection.

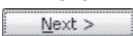


System is detecting user's PC, please wait



Welcome Page: Click  to enter next setup procedure.



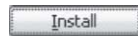
Read Me & Intellectual Property Announcement: User needs to click “I accept the terms in the license agreement” to enter next step of setup procedure or the setup sequence will not proceed. Click  To proceed.



Save-path: User defines save path of the execution file. Click  to proceed.



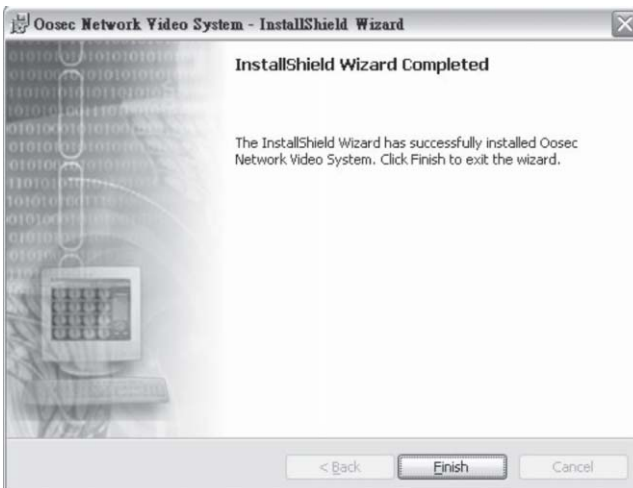
Check: Check setup details are correct. Click to proceed.



Installing: System setup is proceeding, please wait.



Installation Complete: System installation sequence is complete. Click  to exit.



User can write IP address onto video server can be set either by IP Installer or multi-port application software.

Remark: Product default IP address is “192.168.1.99” . Default password is Mac address (0013dcXXXXXX) shown on the package and bottom of the product.

Please follow procedures listed below to change default values on personal computer

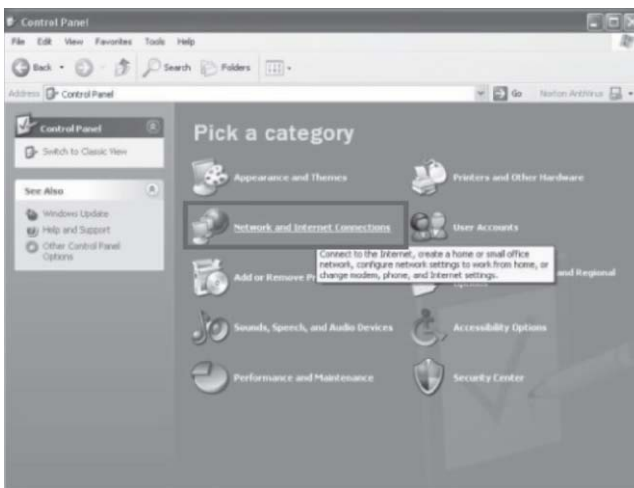
3.1 Hardware connection

Prepare a crossover UTP cable to connect directly with PC (192.168.1.XXX) or a standard parallel UTP cable and insert it onto switch/hub or IP sharing (if LAN MASK is same with product).

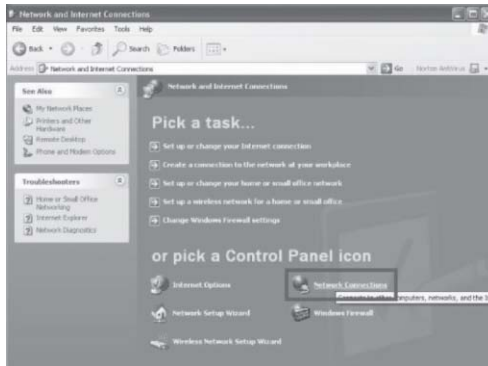
3.2 Network and Internet Connections

Before IP Installer setup sequence, user needs to adjust Internet Connection.

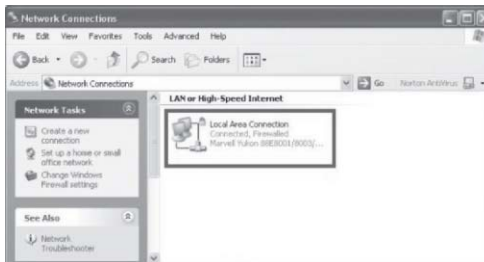
▼ Click ” Start ” → ” Control Pane ” → ” Network and Internet Connections ”



- ▼ Click " Network Connections"



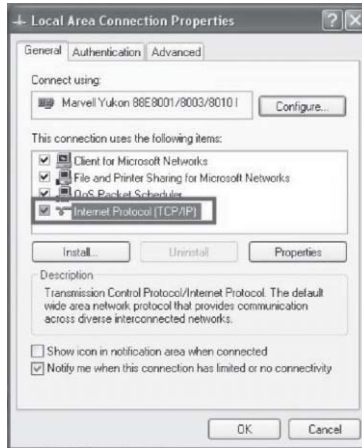
- ▼ Double click your network (Local Area Connection)



- ▼ Click "Properties" to enter IP address setup.



▼ Click " Network Connections"



▼ Tick "Use the following IP address" then type IP (I):192.168.1.99, and for Subnet mask is 255.255.255.0



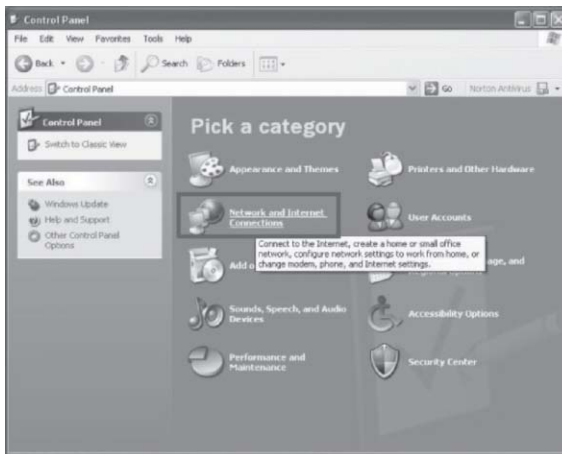
Click "OK" icon to finish network connections setup for user' s PC and video server are in the same subnet. User can setup IE security for remote view.

3.3 Network Security Setup

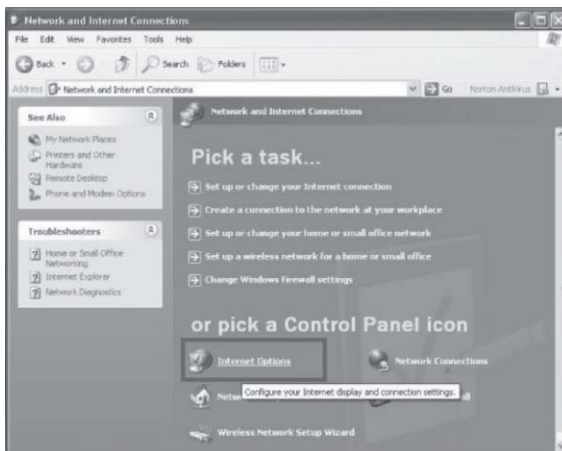
3.3.1 Security/Trusted Sites Setup

When first time to login video server via Internet Explorer, user needs to do security adjustment to view video images.

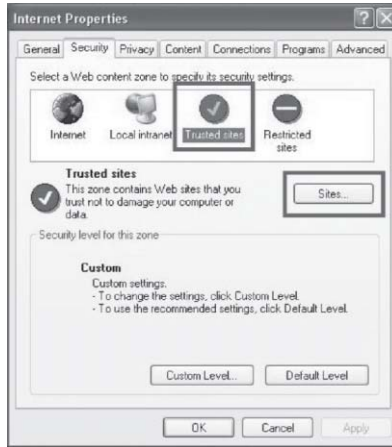
Sequence: Click “Start” → ” Control Panel” → ” Network and Internet Connections” → ” Internet Options” → ” Security”
“Internet” → “Custom level” .



▼ Click “Internet Options”



▼Click “Trusted Sites” and then click “Sites” to type wishful IP address for IP camera/video server to ensure IE browser will not block the IP address.



▼ Type wishful IP address for IP camera/video server and DO NOT click “Require server verification (https) for all sites in this zone.”



- ▼ Window shows IP address is typed.



- ▼ Type wishful IP address and Web site will show in the window, click “OK” button to save data.

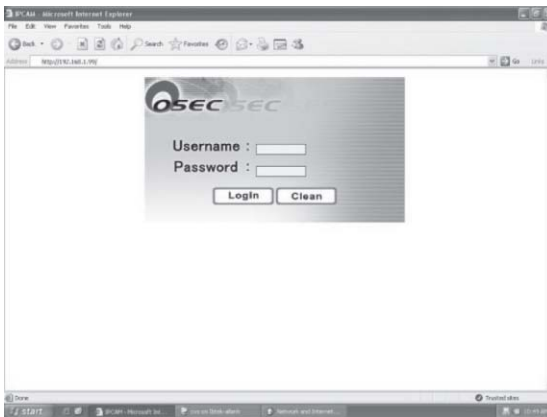


User' s PC must be equipped with IE 6.0 or later version.

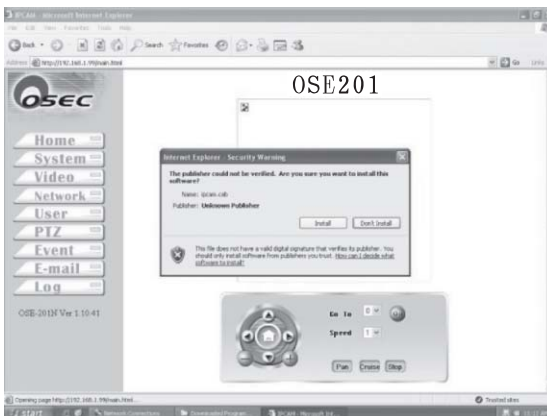
4.1 Login Authentication

▼ After having typed correct IP address (default: 192.168.1.99), system will pop-up a verification window that needs to type correct username and password to login IE real-time video images.

Remark: Please type “root” for user' s account and MAC address (0013dcXXXXXX) of this IP camera/video server (shown on the bottom of product and the surface of the pack)



▼ System will ask to install ActiveX, click  to install ActiveX onto PC to view images



After downloading ActiveX, click to view real-time images.



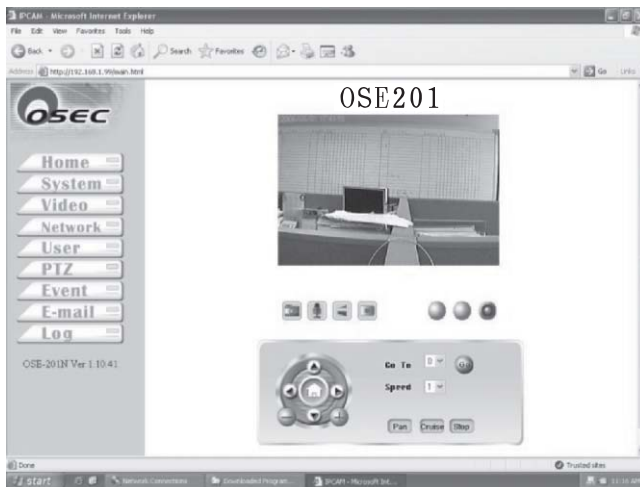
4.2 IE Main Page

There are three major blocks on IE main page which include setup icons, real-time video, and pan-tilt-zoom control panel.

Setup Icons: Device setup functions of this camera.

Real-time Video: This window includes real-time images, functions of snapshot, microphone, speaker, DI indicator, DO, and control buttons.

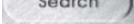
Pan-tilt-zoom: This section includes pan-tilt-zoom, speed, preset location, and other command controls.



More detailed of setup functions and multi-camera recording management software can be viewed on user's manual attached on CD.


IP Installer can assist user locating wishful IP camera/video server and type appropriate IP address onto product both in fastest and easiest way.

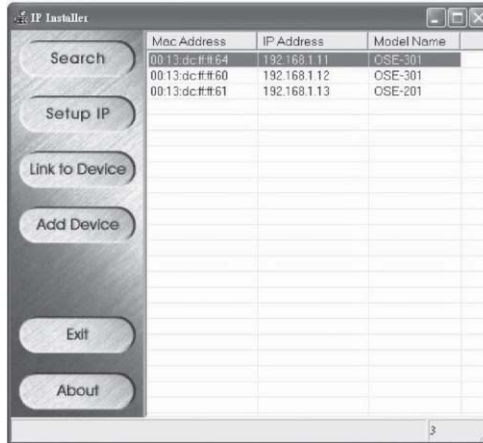


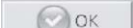
Search: User can click  to get all the products in the same LAN subnet. Result will be shown on the right table listed below.

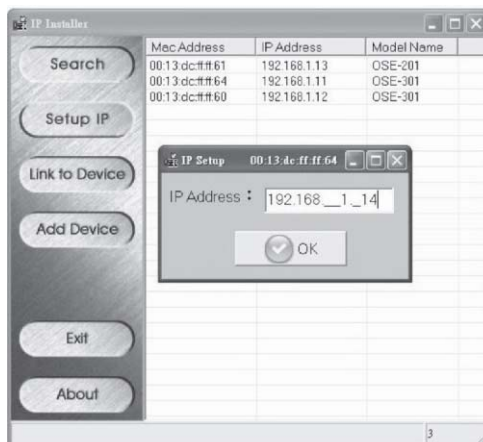


Setup IP:

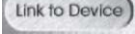
1. Select one device listed on the right, and click  To enter.





2. System will popup a window, type wishful IP address onto device, click  , and system write correct IP onto device.

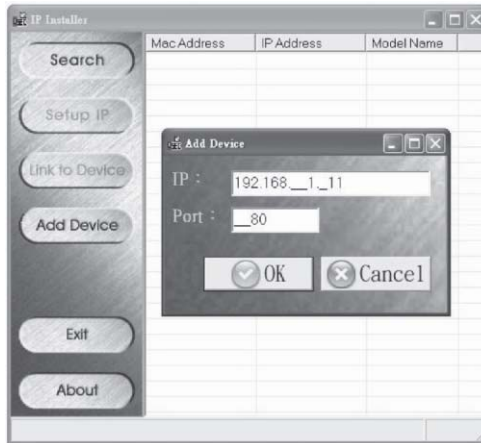




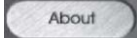
Link to Deice: Click  to view real-time video and confirm new IP address has successfully written onto device. As mentioned in the previous page, a verification window will popup to ask to type username (default: root) and password (default: device MAC address shown on the bottom of device).



Add Device: If you want to login other IP camera/video server which not locates in the same LAN or device on the Internet. Click  to login. Type IP address and click  to add.



Exit: Click  to exit IP Installer.

About: Click  to view manufacturer information.

HARDWARE & SOFTWARE LIMITED WARRANTY

TWSAFE Inc. (TWSAFE), warrants to the original purchaser (“Purchaser”) i.e. distributor or reseller of an IP surveillance product (“Product”) that the Product will be free from flaws in material or workmanship for ONE year from the date of purchase. If a Product fails during the Warranty Period due to a defect in material or workmanship, TWSAFE as its sole responsibility and Purchaser's sole and exclusive remedy will, at its opinion, either repair or replace the Product with the same or later version that performs substantially the same function as the one being replaced. The Limited Warranty is contingent upon proper use of the Product and does not cover any Product that has been damaged by misuse, accident, neglect, disaster, improper installation, improper test, or abuse nor by any Product has been altered, modified, or replaced by anyone other than TWSAFE.

THIS IS A LIMITED WARRANTY AND IT IS THE ONLY WARRANTY MADE BY TWSAFE. THIS WARRANTY IS IN LIEU OF ALL OTHER WARRANTIES, EXPRESSED OR IMPLIED, INCLUDING WITHOUT LIMITATIONS, THE IMPLIED WARRANTIES OF MERCHANTABILITY AND FITNESS FOR A PARTICULAR PURPOSE

Any Product requiring service during Warranty period should be returned to TWSAFE in accordance with the “Return Material Authorization” process set forth in documentation for that Product and in the current TWSAFE Products and Services Guide.

EXCEPT FOR THE EXCLUSIVE REMEDY SET FORTH ABOVE, IN NO EVENT SHALL IP SURVEILLANCE PRODUCT HAVE ANY LIABILITY TO PURCHASE ARE ANY THIRD PARTY FOR ANY CLAIM, LOSS OF DAMAGE OF ANY KIND, EVEN IF IP SURVEILLANCE PRODUCT HAS BEEN ADVISED OF THE POSSIBILITY OF SUCH DAMAGES, INCLUDING BUT NOT LIMITED TO LOST PROFITS, CONSEQUENTIAL, INCIDENTAL, SPECIAL, PUNITIVE OR INDIRECT DAMAGES, ARISING OUT OF OR IN CONNECTION WITH THE PERFORMANCE, USE OF OR ANY INABILITY TO USE ANY PRODUCT OR ANY DATA, SOFTWARE OR EQUIPMENT RELATED THERETO OR USED IN CONNECTION THEREWITH OR INFRINGEMENT OF ANY PATENT, COPYRIGHT, TRADEMARK OR ANY OTHER INTELLECTUAL PROPERTY RIGHT OF ANY THIRD PARTY. IN NO EVENT SHALL IP SURVEILLANCE PRODUCT’ S LIABILITY FOR DAMAGES, WHETHER ARISING OUT OF CONTRACT, NEGLIGENCE, WARRANTY OR INFRINGEMENT OF ANY INTELLECTUAL PROPERTY RIGHT, EXCEED THE PURCHASE PAID BY PURCHASER FOR THE PRODUCT.

Note: This equipment has been tested and found to comply with the limits for a Class A digital device, pursuant to Part 15 of the FCC Rules. These limits are designed to provide reasonable protection against harmful interference when the equipment is operated in a commercial environment. This equipment generates, uses, and can radiate radio frequency energy and, if not installed and used in accordance with the instruction manual, may cause harmful interference to radio communications. Operation of this equipment in a residential area is likely to cause harmful interference, in which case the user will be required to correct the interference at his/her own expense. Properly shielded and grounded cables and connectors must be used in order to meet FCC emission limits. TWSAFE Inc. is not responsible for any radio or television interference caused by using other than recommended cables and connectors or by unauthorized changes or modifications to this equipment. Unauthorized changes or modifications could void the user's authority to operate the equipment.

This device complies with Part 15 of the FCC rules. Operation is subject to the following two conditions: (1) this device may not cause harmful interference, and (2) this device must accept any interference received, including interference that may cause undesired operation.

PAL:

ABU DHABI, AFGHANISTAN, ALBANIA, ALGERIA, ANDORRA, ANGOLA, ARGENTINA, ASCENSION ISLAND, AUSTRALIA, AUSTRIA, AZORES, BAHRAIN, BANGLADESH, BELGIUM, BOSNIA HERZEGOVINIA, BOTSWANA, BRAZIL, BRUNEI, BRUNEI, CAMEROON, CANARY ISLANDS, CAPE VERDE, CAYMEN ISLANDS, CHINA, CHRISTMAS ISLAND, COOK ISLAND, CROATIA, CYPRUS, CYPRUS (TURKISH), CZECH REPUBLIC (CT1, CT2 & PRIMA), DENMARK, DUBAI, EASTER ISLAND, EGYPT, ERITREA, ETHIOPIA, FALKLAND ISLANDS, FAROE ISLANDS, FIJI, FINLAND, GAMBIA, GAZA & WEST BANK, GERMANY, GHANA, GILBRALTAR, GREECE, GREENLAND, GUINEA, GUINEA-BISSAU, HOLLAND, HONG KONG, ICELAND, INDIA, INDONESIA, IRELAND, ISRAEL, ITALY, JORDAN, KENYA, KIRIBATI, KUWAIT, LAOS, LATVIA, LEBANON, LESOTHO, LIBERIA, LIECHTENSTEIN, LITHUANIA, LUXEMBOURG, MACAU, MACEDONIA, MADEIRA, MALAWI, MALAYSIA, MALDIVES, MALTA, MONACO, MONTENEGRO, MOZAMBIQUE, NAMIBIA, NEPAL, NETHERLANDS, NEW ZEALAND, NIGERIA, NORFOLK ISLAND, NORWAY, OMAN, PAKISTAN, PAPUA NEW GUINEA, PARGUAY, POLAND, PORTUGAL, QATAR, ROMANIA, SARDINIA, SAUDI ARABIA, SERBIA, SEYCHELLES, SIERRA LEONE, SINGAPORE, SLOVAKIA REPUBLIC, SLOVENIA, SOLOMON ISLANDS, SOMALIA, SOUTH AFRICA, SPAIN, SRI LANKA, SUDAN, SWAZILAND, SWEDEN, SWITZERLAND, SYRIA, TANZANIA, THAILAND, TONGA, TRISTIAN DA CUNAH, TURKEY, UGANDA, UNITED ARAB EMIRATES, UNITED KINGDOM, URUGUAY, VANUATU, VATICAN, YEMEN, YUGOSLAVIA, ZAMBIA, ZANZIBAR, ZIMBABWE

NTSC:

ALASKA, AMERICAN SAMOA, ANTIGUA, ANTILLES (DUTCH), ARUBA, BAHAMAS, BARBADOS, BARBUDA, BELIZE, BERMUDA, BOLIVIA, BRITISH VIRGIN ISLANDS, BURMA, CANADA, CAYMEN ISLANDS, CHILE, COLUMBIA, COSTA RICA, CUBA, CURACAO, DIEGO GARCIA, DOMINICA, DOMINICAN REPUBLIC, ECUADOR, EL SALVADOR, GALAPAGOS ISLAND, GREENLAND, GRENADA, GUAM, GUATEMALA, GUYANA (REPUBLIC), HAITI, HAWAII, HONDURAS, JAMAICA, JAPAN, JOHNSTON ISLANDS, KOREA SOUTH, LEEWARD ISLANDS, MARIANA ISLANDS, MARSHALL ISLANDS, MEXICO, MICRONESIA, MIDWAY ISLANDS, MONTSERRAT, MYANMAR, NICARAGUA, OKINAWA, PALAU, PANAMA, PERU, PHILIPPINES, PUERTO RICO, SAMOA, ST KITTS AND NEVIS, ST LUCIA, ST VINCENT, SURINAM, TAIWAN, TRINIDAD & TOBAGO, UNITED STATES OF AMERICA, VENEAEULA, VIETNAM, VIRGIN ISLANDS

TWSAFE Inc.

7F, 428, Dung-hwa Rd., Taichung 406, Taiwan

Tel: 886-4-2292-4477

Fax: 886-4-2292-3947

Web: <http://www.oosec.com>

Email: service@oosec.com

