



USER GUIDE

BUSINESS SERIES

Business Internet Camera with Audio

LINKSYS **one** Ready

Model: PVC2300, WVC2300

CISCO

About This Guide

Icon Descriptions

While reading through the User Guide you may encounter various icons designed to call attention to a specific item. Below is a description of these icons:



NOTE: This check mark indicates that there is a note of interest and is something that you should pay special attention to while using the product.



WARNING: This exclamation point indicates that there is a caution or warning and it is something that could damage your property or product.



WEB: This globe icon indicates a noteworthy website address or e-mail address.

Online Resources

Website addresses in this document are listed without **http://** in front of the address because most current web browsers do not require it. If you use an older web browser, you may have to add **http://** in front of the web address.

Resource	Website
Linksys	www.linksys.com
Linksys International	www.linksys.com/international
Glossary	www.linksys.com/glossary
Network Security	www.linksys.com/security

Copyright and Trademarks

Specifications are subject to change without notice. Linksys is a registered trademark or trademark of Cisco Systems, Inc. and/or its affiliates in the U.S. and certain other countries. Copyright © 2007 Cisco Systems, Inc. All rights reserved. Other brands and product names are trademarks or registered trademarks of their respective holders.

Open Source

This product may contain material licensed to you under the GNU General Public License or other open-source software licenses. Upon request, open-source software source code is available at cost from Linksys for at least three years from the product purchase date.



WEB: For detailed license terms and additional information visit: www.linksys.com/gpl

Chapter 1: Introduction	1
Minimum Requirements	1
Chapter 2: Wireless Security Checklist	2
General Network Security Guidelines	2
Additional Security Tips	2
Chapter 3: Product Overview	3
Front Panel.	3
Back Panel	3
Side Panel	4
Chapter 4: Installation	5
Overview.	5
Linksys Wired Network	5
Linksys Wireless Network.	5
Linksys One Ready	5
Linksys One Wired Network	5
Linksys One Wireless Network.	6
Hardware Installation	6
Configuration	7
Setting Up the Wireless Connection on the WVC2300 Camera	9
Wireless Security	10
Chapter 5: Installing and Using the Viewer and Recorder Software	12
Overview.	12
Installing the Software	12
Using the Monitor Application	13
Video Monitor.	13
Setting Up Cameras	14
Recording Schedule	15
Preferences	15
Using the Playback Application.	16
Video Playback	16
Chapter 6: Advanced Configuration	18
Home	18
Home	18
Output	18
Resolution	19
Setup > Basic Setup	19
Device Settings	19
Network Settings.	19
Wireless Settings	20

Setup > Advanced Setup21
HTTP/HTTPS21
RTP/RTSP22
UPnP22
Bonjour22
QoS23
CoS23
Setup > IP Filter23
Administration > Users23
Administrator23
Demo23
User List23
Administration > Maintenance24
Restore Factory Defaults24
Restart24
Configuration24
Administration > Firmware24
Firmware Upgrade24
Audio/Video > Video24
MPEG-4 Settings25
MJPEG Settings25
Mobile Settings25
Video Adjustments25
Options25
Day/Night Switch26
Audio/Video > Audio26
Audio Settings26
Applications > Mail & FTP27
Mail27
FTP27
Applications > Instant Messaging28
Jabber28
Applications > Motion Detection28
Applications > Event29
Event Schedule29
New Schedule29
Trigger Event29
Event Attachment29
Applications > DDNS30
DDNS30
Applications > I/O Ports30
Input Ports30
Output Ports State at Power On31

Output Ports Manual Control31
Applications > RS-485.31
Port Settings.31
Preset Position31
Patrol Sequence31
Status > System.32
System Status32
Status > Image32
MPEG-432
MJPEG.32
Status > Network.32
Network32
Wireless.32
Status > Syslog & Log33
Log.33
Syslog33
Log List33
Status > Video Log.33
Video Log.33
Appendix A: Troubleshooting	34
Appendix B: Windows Vista Notes	35
Camera Application Blocked from Launching at Startup.35
Video Format Selection.35
Appendix C: Bandwidth Usage	36
WVC2300 Bandwidth Test36
Appendix D: Glossary	37
Appendix E: Specifications	41
PVC2300 Specifications.41
WVC2300 Specifications43
I/O Port Specifications45
Appendix F: Warranty Information	46
Appendix G: Wired Product Regulatory Information	47
FCC Statement47
Safety Notices.47
Industry Canada Statement47
Avis d'Industrie Canada.47
User Information for Consumer Products Covered by EU Directive 2002/96/EC on Waste Electric and Electronic Equipment (WEEE)48

Appendix H: Wireless Product Regulatory Information	52
FCC Statement52
FCC Radiation Exposure Statement52
Safety Notices.52
Industry Canada Statement52
Industry Canada Radiation Exposure Statement:.52
Avis d'Industrie Canada.53
Avis d'Industrie Canada concernant l'exposition aux radiofréquences :.53
Wireless Disclaimer53
Avis de non-responsabilité concernant les appareils sans fil53
User Information for Consumer Products Covered by EU Directive 2002/96/EC on Waste Electric and Electronic Equipment (WEEE)54
Appendix I: Contact Information	58

Chapter 1: Introduction

Thank you for choosing the Linksys Business Internet Video Camera with Audio. This User Guide covers two models:

- **PVC2300** Business Internet Video Camera with Audio and PoE (Power over Ethernet)
- **WVC2300** Wireless-G Business Internet Video Camera with Audio



NOTE: For the purpose of this User Guide, whenever a feature applies to both models, the word *Camera(s)* will be referenced. If a specific model number is mentioned, then the feature is specific to that model.

The new Linksys Surveillance solutions are high quality solutions which can be optimized for many different applications. The box-type form factor allows these cameras to be used as-is or put inside an outdoor enclosure for interior or exterior applications. The cameras use removable CS-mount lenses and can be customized with Zoom, Wide-Angled, Vari-focal, Auto-Iris, or other type of lenses as required for the specific application.

The PVC2300 provides Power over Ethernet (PoE) functionality that facilitates installation of the PVC2300 in places without reach of a power outlet.

The Cameras can be mounted on any PT base that supports Pelco_D protocol and can be remotely rotated and controlled through an RS-485 interface. The Camera supports 2 input and 2 output connectors which can be used for connecting to an alarm panel, siren, PIR, smoke detectors, light switch (on/off), door opener, etc.

The Cameras incorporate a high quality progressive scan CCD sensor, delivering good quality undistorted video. The sensor used in the Cameras has Low light sensitivity capability. This means that video can be viewed when very low light (near darkness) is present. Additionally, the Cameras incorporate an IR Cut Filter switcher which, when used with a separate IR lamp, allows for viewing of video in total darkness.

The Cameras support dual CODECs - MPEG-4 and MJPEG. Both CODECs can be used simultaneously. MPEG-4 gives efficient bandwidth consumption with good quality compression and is optimal for real-time viewing of video. MJPEG gives optimal video quality in lossy environments making it ideal for video storage to a NAS device.

The Camera's audio capabilities include 2-way audio, an embedded microphone, external speaker and microphone ports, and voice compression.

With extensive feature support like IP Multicast, RTSP, RTP, and 3GPP, video can be viewed from multiple endpoints and client applications like 3G phones, and Quicktime clients on PCs or Wi-Fi phones.

Support for multiple network protocols like 802.1p priority, 802.1q VLANs, and Dynamic DNS, make the solution ideal for multiple IP surveillance applications. The Cameras can also be managed securely using HTTPS.

Linksys Business Series Surveillance Cameras are also Linksys One Ready. That means they include the necessary firmware to be integrated into a Linksys One data or data/voice network.

Minimum Requirements

Minimum System Requirements (for 1 camera):	
CPU	Pentium 4 class, 2 GHz
Memory	512 MB
Operating System	Microsoft Windows 2000, XP or Vista
Hard Drive	500 MB of available space
Graphics Card	AGP with a minimum 128 MB
Browser	Internet Explorer 6.0 (or above), Mozilla Firefox, and Netscape 7.0 (or above)

Minimum System Requirements (for up to 8 cameras):	
CPU	Pentium 4 class, 3 GHz dual-core
Memory	1 GB
Operating System	Microsoft Windows 2000, XP or Vista
Hard Drive	4 GB of available space
Graphics Card	NVidia high performance or equivalent with a minimum 256 MB
Browser	Internet Explorer 6.0 (or above), Mozilla Firefox, and Netscape 7.0 (or above)



NOTE: For 9 cameras or more, reduce the resolution and frame rate settings and the same minimum requirements apply as listed above.

Chapter 2: Wireless Security Checklist

Wireless networks are convenient and easy to install, so businesses with high-speed Internet access are adopting them at a rapid pace. Because wireless networking operates by sending information over radio waves, it can be more vulnerable to intruders than a traditional wired network. Like signals from your cellular or cordless phones, signals from your wireless network can also be intercepted. Since you cannot physically prevent someone from connecting to your wireless network, you need to take some additional steps to keep your network secure.



1. Change the default wireless network name or SSID

Wireless devices have a default wireless network name or Service Set Identifier (SSID) set by the factory. This is the name of your wireless network, and can be up to 32 characters in length. Linksys wireless products use **linksys** as the default wireless network name. You should change the wireless network name to something unique to distinguish your wireless network from other wireless networks that may exist around you, but do not use personal information (such as your Social Security number) because this information may be available for anyone to see when browsing for wireless networks.



2. Change the default password

For wireless products such as access points and routers, you will be asked for a password when you want to change their settings. These devices have a default password set by the factory. The Linksys default password is **admin**. Hackers know these defaults and may try to use them to access your wireless device and change your network settings. To thwart any unauthorized changes, customize the device's password so it will be hard to guess.



3. Enable MAC address filtering

Linksys routers give you the ability to enable Media Access Control (MAC) address filtering. The MAC address is a unique series of numbers and letters assigned to every networking device. With MAC address filtering enabled, wireless network access is provided solely for wireless devices with specific MAC addresses. For example, you can specify the MAC address of each computer in your home so that only those computers can access your wireless network.



4. Enable encryption

Encryption protects data transmitted over a wireless network. Wi-Fi Protected Access (WPA/WPA2) and Wired Equivalency Privacy (WEP) offer different levels of security for wireless communication. Currently, devices that are Wi-Fi certified are required to support WPA2, but are not required to support WEP.

A network encrypted with WPA/WPA2 is more secure than a network encrypted with WEP, because WPA/WPA2 uses dynamic key encryption. To protect the information as it passes over the airwaves, you should enable the highest level of encryption supported by your network equipment.

WEP is an older encryption standard and may be the only option available on some older devices that do not support WPA.

General Network Security Guidelines

Wireless network security is useless if the underlying network is not secure.

- Password protect all computers on the network and individually password protect sensitive files.
- Change passwords on a regular basis.
- Disable file sharing (peer-to-peer). Some applications may open file sharing without your consent and/or knowledge.

Additional Security Tips

- Keep wireless routers, access points, or gateways away from exterior walls and windows.
- Turn wireless routers, access points, or gateways off when they are not being used (at night, during vacations).
- Use strong passphrases that are at least eight characters in length. Combine letters and numbers to avoid using standard words that can be found in the dictionary.

Chapter 3: Product Overview

Front Panel

The LEDs and Camera lens are located on the front panel of the Camera.



Front Panel



Lens The Camera includes a removable CS-mount lens. For specifications on the included lens, refer to the Specifications section of this User Guide. For a list of recommended lenses to use with this Camera, please refer to the Quick Installation Guide.

Built-in microphone There is a built-in microphone mounted on the front of the Camera. The Camera also has a connection for an external microphone on the rear. Connecting an external microphone will disable the built-in microphone.

Ready LED (Amber) The Ready LED has the following states:

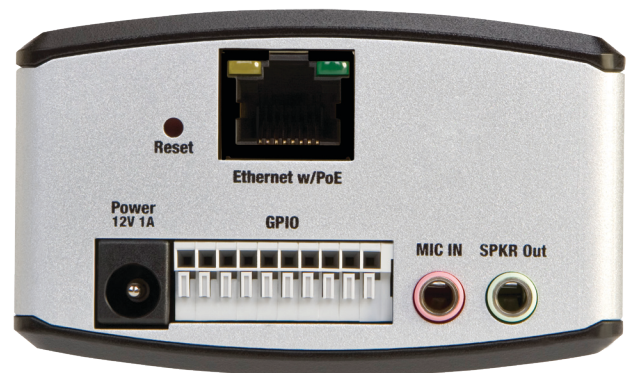
- **Off** Camera is powered off.
- **On** Camera is powered on.
- **Flashing** The Ready LED will flash during start up. This will take 15 to 20 seconds.

Network LED (Green) The Network LED has the following states:

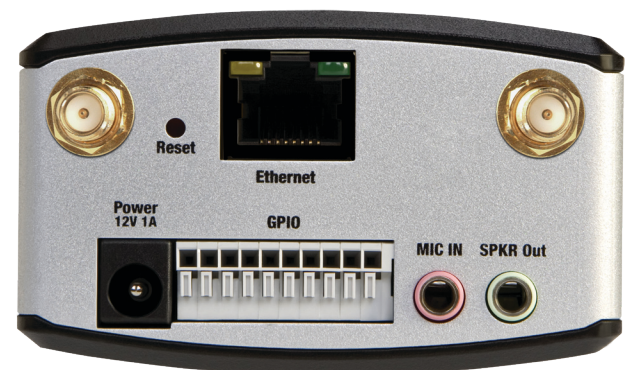
- **Off** Network connection not detected.
- **On** Network connection detected.
- **Flashing** Sending/receiving data.

Back Panel

The ports and reset button are located on the back panel of the Camera.



Back Panel - PVC2300



Back Panel - WVC2300



Antenna Connectors Antenna connectors are only found on the WVC2300 Camera. The connectors are used to attach the antennas to the device for wireless connectivity.



Reset The reset button can be accessed with a straightened paper clip or similar object. The reset button has two functions:

- **Restore Factory Defaults** To restore the factory default settings, press the **Reset** button for more than 10 seconds. When you let go of the button, the LEDs on the front of the Camera will flash and then return to a normal state when the Camera is ready.
- **Set Static IP Address** By default the camera is set to receive an IP address from a DHCP server. If you do not have a DHCP server on your network, you can set a static IP address by pressing the **Reset** button on the camera for less than 10 seconds. A default IP address of **192.168.1.99** will be assigned to the camera.



Ethernet The Ethernet port supports network speeds of either 10 Mbps or 100 Mbps, and can operate in half and full-duplex mode.

Auto-sensing technology enables the port to automatically detect the speed of the device connected to it (10 Mbps or 100 Mbps), and adjust its speed and duplex accordingly.

The Ethernet port supports automatic MDI/MDI-X operation, so you can use straight-through or crossover cables to connect to PCs, servers, or switches.



NOTE FOR PVC2300 USERS: The PVC2300 Camera's Ethernet port also supports the IEEE 802.3af Power-over-Ethernet (PoE) standard that enables DC power to be supplied to the Camera using wires in the connecting twisted-pair cable. Any 802.3af-compliant device attached to the port can directly supply power to the Camera over the twisted-pair cable without requiring its own separate power source. This capability gives network administrators centralized power control, which translates into greater network availability.

To connect a device to the port, you will need to use Category 5 (or better) network cable.



NOTE FOR WVC2300 USERS: Attaching an Ethernet cable will disable the wireless interface on the WVC2300 Camera. Only one interface can be active at any time.



NOTE FOR WVC2300 USERS: On the WVC2300 Camera, the Ethernet cable should only be connected or disconnected when the Camera is powered OFF. Attaching or detaching the Ethernet cable while the Camera is powered on does NOT switch the interface between wired and wireless.



Activity LED The Activity LED flashes when activity is detected on the Ethernet port.



PVC2300 PoE LED This LED only functions on the PVC2300 Camera. The LED has the following states:

On PoE connection is detected.

Off PoE connection is not detected.

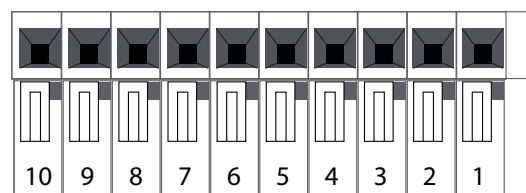


Power The Power port is where you will connect the power adapter.



NOTE FOR PVC2300 USERS: The Power port is automatically turned off if a PoE connection is detected on the Ethernet port.

GPIO This port is utilized for I/O connections. Detailed specifications can be found in the Specifications section of this User Guide.



Mic In This jack is used to connect an external microphone to the camera.



Spkr Out This jack is used to connect powered speakers to the Camera.

Side Panel

The Kensington security slot is located on a side panel of the Camera.



Side Panel



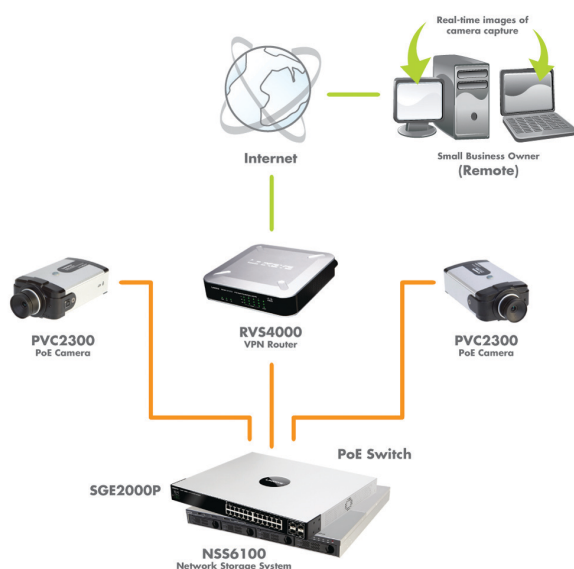
Security Slot The security slot can be utilized to attach a Kensington lock to the Camera.

Chapter 4: Installation

Overview

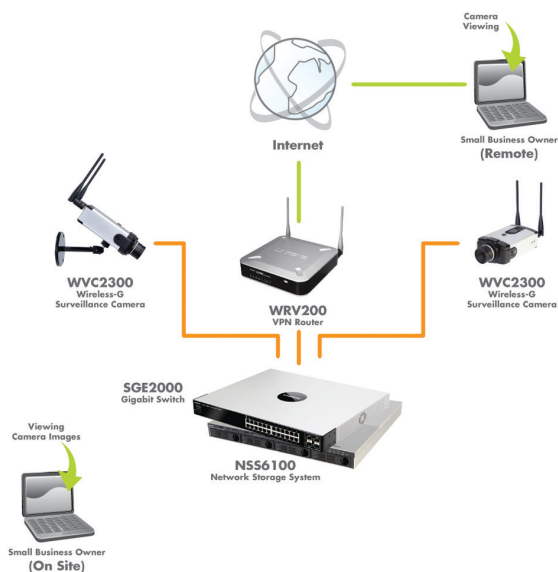
This chapter will explain how to install the Camera into a wired or wireless network. The following diagrams show some typical network configurations.

Linksys Wired Network



Example Linksys Wired Network

Linksys Wireless Network



Example Linksys Wireless Network

Linksys One Ready

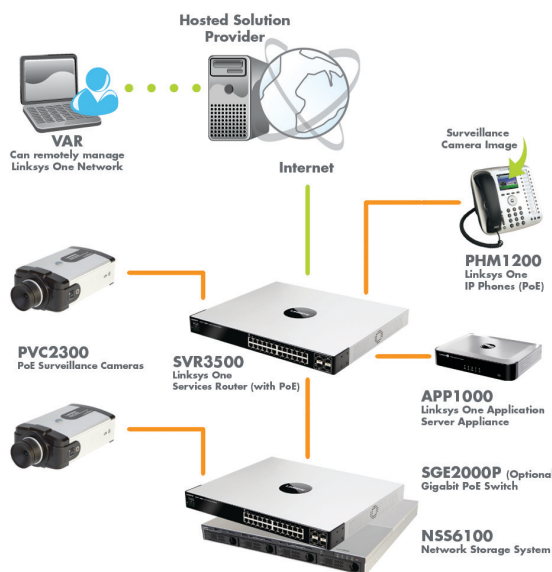
When the Camera is connected to a Linksys One network, you can access the images using the Linksys One Video Surveillance Application (VSA) from any PHM1200 IP phone or web browser. The Linksys One VSA is a zero configuration plug-and-play application. The Camera sends live video feeds at a rate of 2 fps (frames per second) to your phone or web browser, with the option to receive alerts for motion detection and other events. You can easily configure the system to store video captures, send event notifications via e-mail, and operate with devices such as alarm systems, solenoid locks, and lighting controls.

The Linksys One VSA works in conjunction with the following Linksys and Linksys One devices:

- Linksys One Application Server Appliance, model APP1000 (Required)
- Linksys One Ready Business Internet Video Camera with Audio, model PVC2300 or WVC2300 (Required)
- Linksys One Services Router, model SVR200 required if a WVC2300 camera is installed (Required)
- Linksys One IP Phone, PHM1200 (Optional)
- Linksys One Ready Switches, any model (Optional)
- Linksys One Ready Network Attached Storage Device, any model, or FTP server for the storage of video files (Optional)

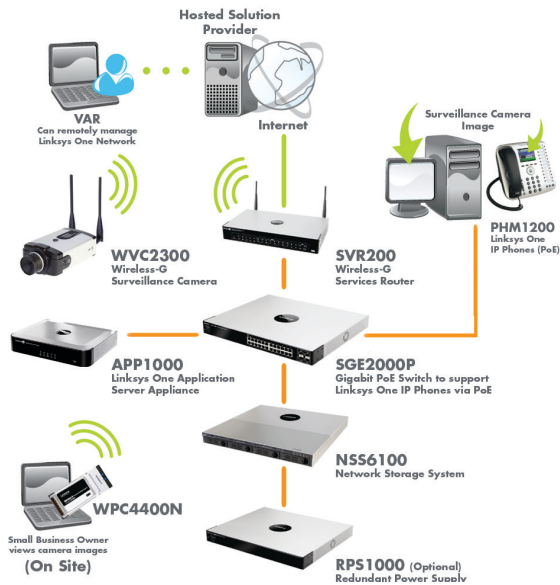
End-user documentation, including the Linksys One Video Surveillance Application User Guide (v2.1 or above) is available on the web at www.linksysone.com

Linksys One Wired Network



Example Linksys One Wired Network

Linksys One Wireless Network



Example Linksys One Wireless Network

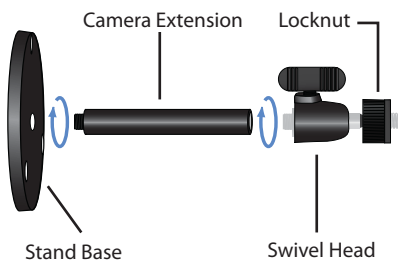
Hardware Installation



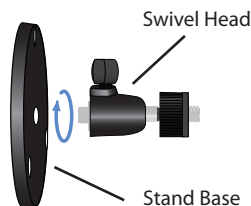
NOTE: Before attaching the camera extension or swivel head, the stand base can be mounted in a permanent location by using three screws to secure the stand base to the desired location.

1. The Camera stand can be connected two different ways:

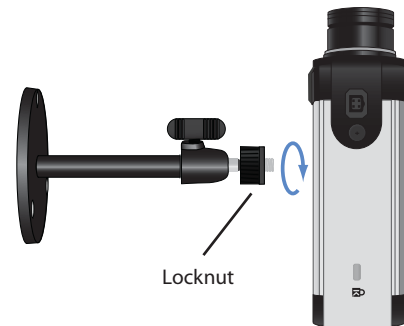
- Attach the stand base to the camera extension and attach the camera extension to the swivel head.



- You can connect the swivel head directly to the stand base if the extension isn't necessary.

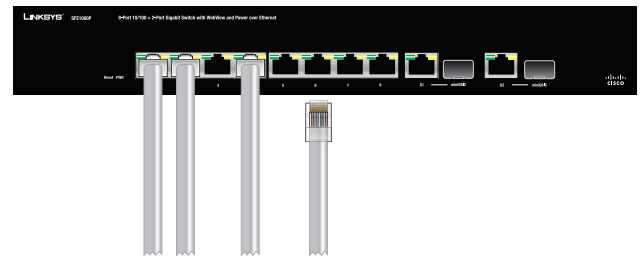


2. Connect the camera stand to the bottom of the camera. Adjust the camera to the appropriate viewing position.

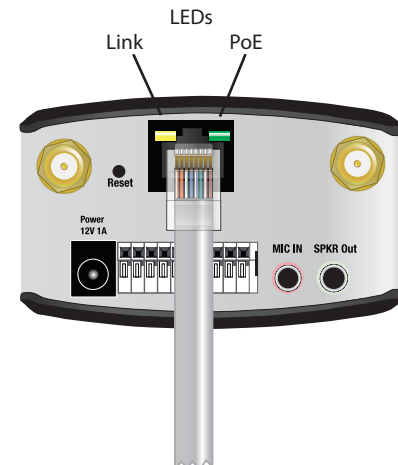


Once the camera is positioned properly, secure the camera in place by tightening the locknut.

3. Connect the included Ethernet network cable to your network router or switch.

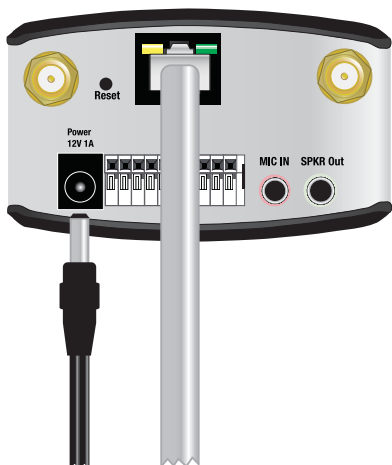


4. Connect the other end of the cable to the Camera's Ethernet port.



If your network switch provides Power over Ethernet to the Camera, verify the Camera's LEDs are lit and skip steps 5-7.

5. Connect the included power adapter to the Camera's Power port and plug the other end into a standard electrical outlet.



Verify that the Camera's LEDs are lit.



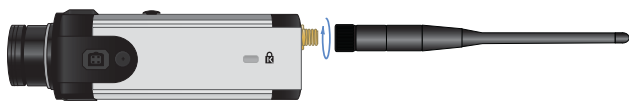
LED Table

LED	Color	Activity	Action
Ready	Amber	Off	Camera is powered off
		On	Camera is powered on
		Blink	Camera is booting
Network	Green	Off	Network connection not detected
		On	Network connection detected
		Blink	Sending/receiving data



NOTE: Hardware Installation steps 6 and 7 are only necessary if you are using the WVC2300 Wireless-G Business Internet Video Camera.

- Connect the antennas to the antenna connectors on the Camera.

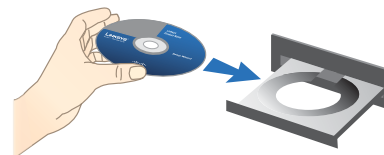


- Place the antennas in an upright position.

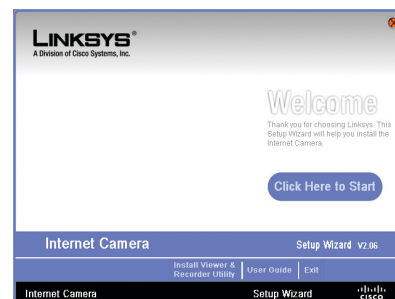


Configuration

- Insert the Setup CD into your CD-ROM drive. If the CD doesn't run automatically, go to **My Computer** and click on your CD-ROM drive.



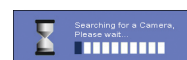
- The Setup screen will appear. Click the **Click Here to Start** button.



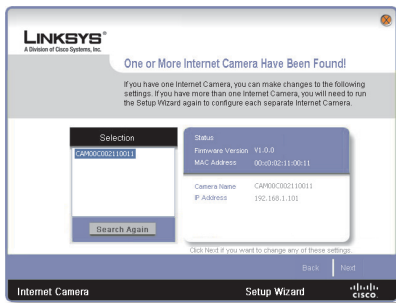
- The license agreement screen will appear, click **Next** if you agree and wish to proceed.



- The Wizard will now search for your camera.



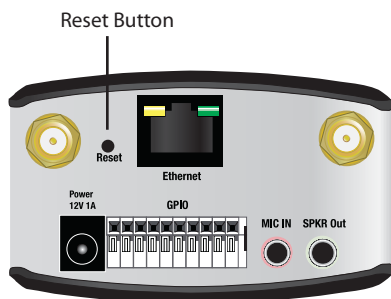
Once found highlight the camera and click **Next**.



If the Camera you want is not displayed in the Selection box, click **Search Again**.

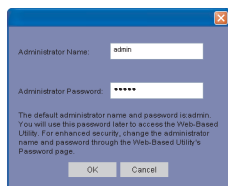


NOTE: The Camera defaults to DHCP mode. If your network doesn't have a DHCP server or if you are having issues obtaining an IP address, you can assign a static IP address to the Camera by pressing the reset button for less than 10 seconds. A static IP address of **192.168.1.99** will be assigned to the Camera.



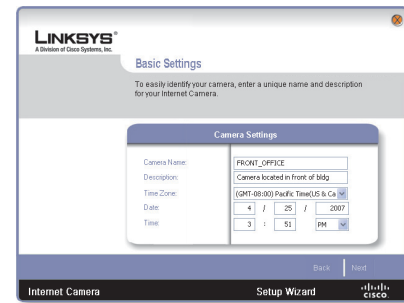
WARNING: Pressing the reset button for more than 10 seconds will restore all of the factory default settings, including setting the Camera to DHCP mode.

- The default user name and password is admin. Type admin in lowercase letters, in the *Administrator Name* and *Administrator Password* fields, then click **OK**.



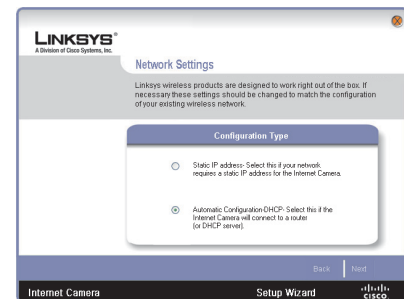
For security purposes, it is recommended that you change the default name and password using the Camera's web-based utility at a later time.

- On the *Basic Settings* screen, change the following settings:

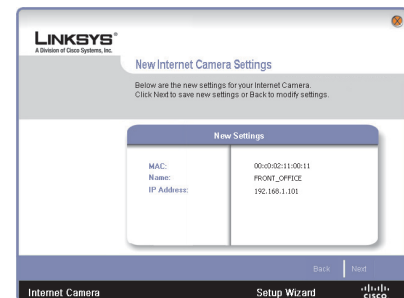


- Camera Name** Enter a unique name for the Camera, up to 15 characters in length. Unique names are helpful when you are using multiple Cameras on the same network.
- Description** Enter a description, up to 32 characters in length, with additional information, such as the location of the Camera.
- Time Zone** Select the time zone that corresponds with the Camera's location.
- Date** Enter the current date in the provided fields.
- Time** Enter the current time in the provided fields. When you have finished making changes, click **Next**.

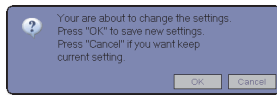
- If you want to assign the IP address, then select **Static IP address**, otherwise leave the default setting, Automatic Configuration DHCP.



- The New Internet Camera Settings screen will appear and display the Camera's settings. Click **Next** to continue or click **Back** to make changes.



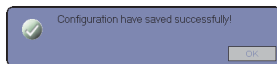
- A confirmation window will appear, click **OK** to confirm the settings.



A timer will appear as the settings are saved to the Camera.



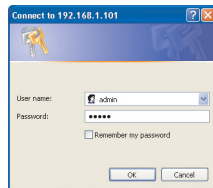
10. A window will appear indicating that the settings have been saved successfully. Click **OK** to continue.



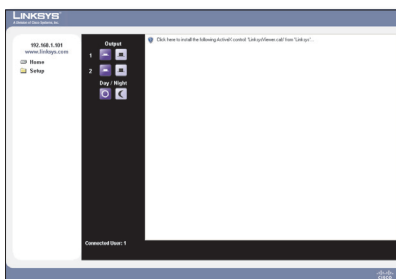
11. The Wizard will now return to the *Welcome* screen. Click **Exit** to automatically launch your default web browser and proceed to the Home page login screen.



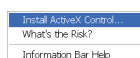
12. The login prompt will appear, enter admin in both the *User name* and *Password* fields.



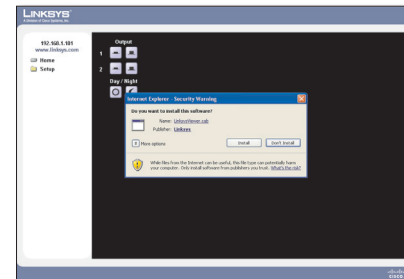
13. Internet Explorer will prompt you to install ActiveX. In order to view video you must accept the ActiveX download.



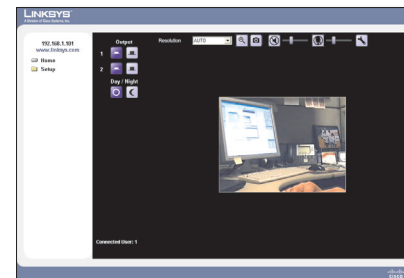
Click **Install ActiveX Control**.



14. Click the **Install** button.



You should be able to view video on the home page.



Setting Up the Wireless Connection on the WVC2300 Camera

To configure the Camera for wireless connectivity, you must still be connected to the home page.

1. Click on **Setup** to open the *Setup > Basic Setup* screen.
2. Enter the appropriate Wireless Settings:

SSID The SSID is the network name shared among all devices in a wireless network. Enter the network's SSID or network name here. The SSID is case sensitive.

Network Type Select the appropriate network mode:

- **Infrastructure** Use this option if you are connecting the Camera to an access point or router.
- **Ad-hoc** Use this option if you are connecting the Camera directly to a PC or notebook.

Channel No If the Camera is set to ad-hoc mode, select its channel setting from the drop-down menu.



NOTE: When using Infrastructure mode, the channel setting is configured automatically.

Security Click the **Edit Security Settings** button to display the *Wireless Security* screen.

Wireless Security

Security Mode Select the appropriate option based on your wireless network configuration:

- **Disabled** This option implements no security on your wireless network. Data is not encrypted before transmission.
- **WEP** WEP is a basic encryption method, which is not as secure as later methods such as WPA-Personal or WPA2 Personal. However, it is supported by all clients.
- **WPA /WPA2 Personal** This method offers two encryption methods, TKIP and AES, with dynamic encryption keys.
- **WPA /WPA2 Enterprise** This option requires that your LAN has a RADIUS server for authentication.

WEP



Wireless Security > Security Mode > WEP

TX Key Select the number of the key used on the wireless network.

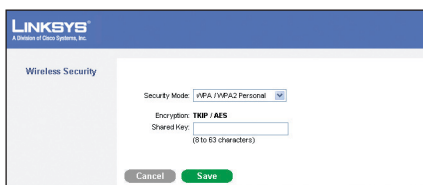
WEP Encryption Select the appropriate option for key length based on your network settings.

Passphrase Type in the passphrase used to generate WEP keys on your network and click the **Generate** button.

Key 1-4 Key values can be entered in manually or generated from a passphrase.

Authentication Select the appropriate authentication type used on the wireless network.

WPA /WPA2 Personal



Wireless Security > Security Mode > WPA /WPA2 Personal

Encryption This cannot be modified.

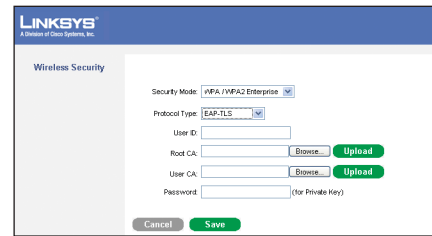
Shared Key Enter the shared key used for accessing the wireless network.

WPA /WPA2 Enterprise

The screen options vary depending upon the protocol type selected.

Protocol Type Select EAP-TLS or EAP-TTLS.

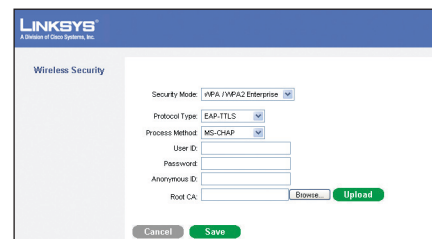
EAP-TLS



Wireless Security > Security Mode > WPA /WPA2 Enterprise (EAP-TLS)

- **User ID** The user ID used to login to your RADIUS server.
- **Root CA** A root certificate is an unsigned public key certificate, or a self-signed certificate, which implies that you trust your browser's publisher to include correct root certificates, and in turn the certificate authorities it trusts, and anyone to whom the CA may have issued a certificate-issuing-certificate, to faithfully authenticate the users of all their certificates.
- **User CA** A user certificate is a signed private key certificate, which implies that you trust your browser's publisher to include correct user certificates, and in turn the certificate authorities it trusts, and only user to whom the CA may have issued a certificate-issuing-certificate, to faithfully authenticate the users of all their certificates.
- **Password** This is for this Camera's client login to the RADIUS server, and must match the key stored on the RADIUS server.

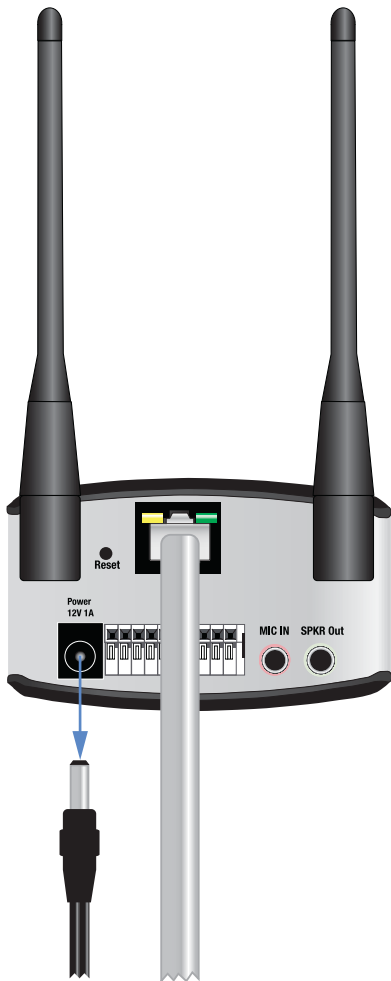
EAP-TTLS



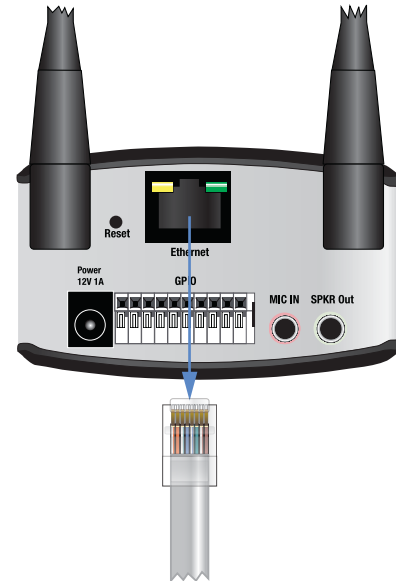
Wireless Security > Security Mode > WPA /WPA2 Enterprise (EAP-TTLS)

- **Process Method** Choose an authentication method as required to handle the processing and transmitting of CA to your RADIUS server.
- **User ID** The user ID used for login to your RADIUS server.

- **Password** This is for this Camera's client login to the RADIUS server.
 - **Anonymous ID** The unsigned public ID used for login to your RADIUS server.
 - **Root CA** A root certificate is an unsigned public key certificate, or a self-signed certificate, which implies that you trust your browser's publisher to include correct root certificates, and in turn the certificate authorities it trusts, and anyone to whom the CA may have issued a certificate-issuing-certificate, to faithfully authenticate the users of all their certificates.
3. Click **Save** to save the wireless security settings and close out the window manually.
 4. On the *Setup > Basic Setup* screen, click the **Save** button to save the wireless settings.
 5. Disconnect the power to the Camera.



6. Disconnect the Ethernet Cable from the Camera.



NOTE: The wireless connection will not work if an Ethernet cable is attached to the Camera when it is powered on.

7. Reconnect the power to the Camera.



8. Click on **Home** in the web-based utility to verify the video is streaming from your wireless connection. You should be able to view video on the home page.

Chapter 5: Installing and Using the Viewer and Recorder Software

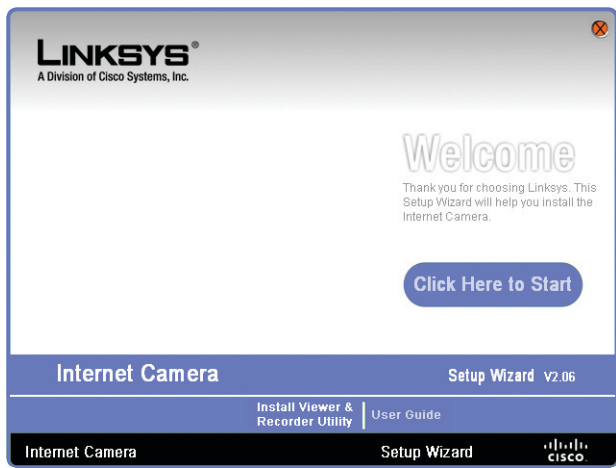
Overview

This chapter will instruct you on how to install and use the Internet Camera Viewer & Recorder Utility on your PC. The Utility allows you to easily view and record video.

If another Internet Camera Viewer & Recorder Utility has already been installed on your PC, you should uninstall it before installing this software.

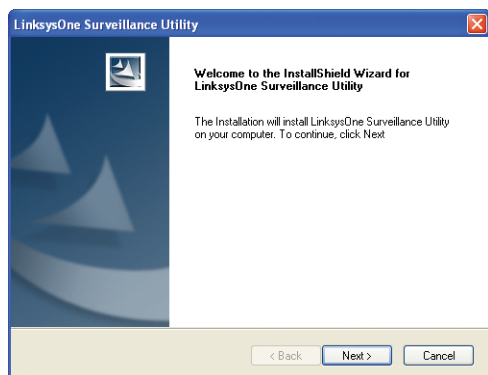
Installing the Software

1. On the *Welcome* screen of the Setup Wizard, click **Install Viewer & Recorder Utility**.



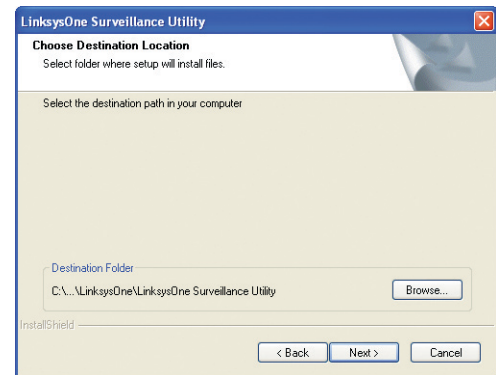
Setup Wizard Welcome Screen

2. The *Welcome* screen will appear. Click the **Next** button to proceed.



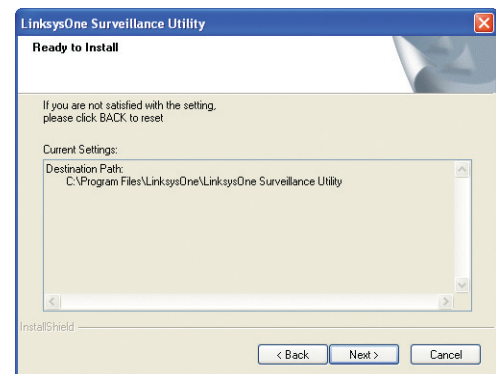
Welcome Screen

3. The *Choose Destination Location* screen will appear. To install the Viewer & Recorder Utility files in the default folder, click the **Next** button. To select a different folder, click the **Browse** button and follow the on-screen directions.



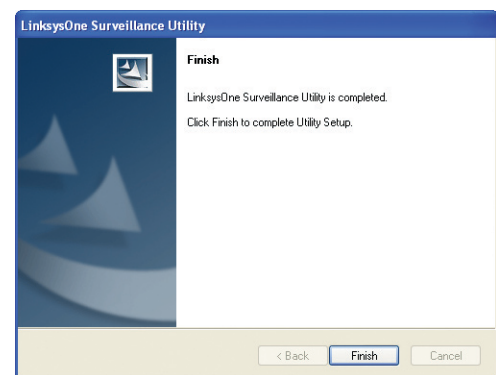
Choose Destination Location

4. The *Ready to Install* screen will appear. The selected destination path will be displayed. If you wish to change the path, click the Back button. If you are satisfied with the location, click the **Next** button to continue.



Ready to Install

5. Click **Finish** to complete the installation.



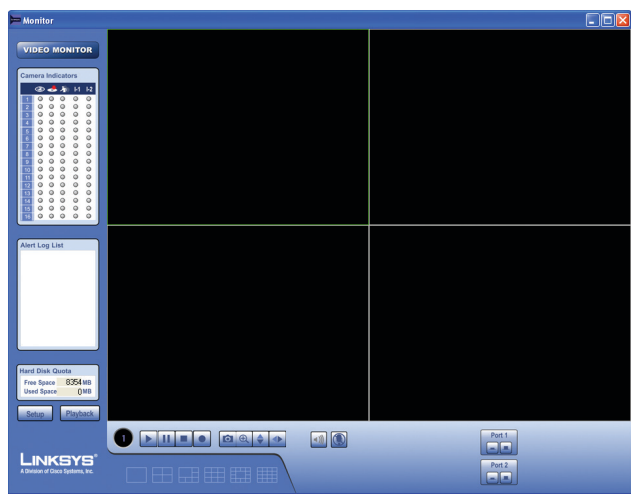
Using the Monitor Application

After the software has been installed, you can launch the application from shortcuts on the desktop and in the *Start* menu.



Desktop Shortcuts

Once you've launched the Monitor application, you will see the Monitor's main screen. From this screen, you can configure and control Cameras.



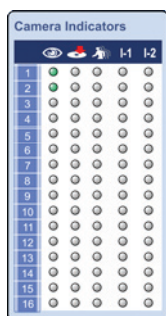
Monitor Main Screen

Video Monitor

The following list details the function of the icons found on the *Video Monitor* screen.

Camera Indicators

The Video Monitor includes a camera indicator window. The icons indicate the activities associated that are active for the Cameras.



Viewing When a Camera has a green light under this icon, it indicates the video is being viewed.



Recording When a Camera has a red light under this icon, it indicates that video is being recorded.



Motion When a Camera has a light under this icon, it indicates that motion has been detected.



Input 1 This indicates that input 1 has been triggered.



Input 2 This indicates that input 2 has been triggered.



Camera Number This indicates which Camera number the indicators apply to. The camera number will appear blue when the Camera is active. To start a video stream, select an active Camera and click play or left mouse click on the number and drag it to an empty screen.

Alert Log List

Alert Log List Displays any alert messages.

Hard Disk Quota

Free Space Displays the amount of free space available at the recording path defined in the preferences. By default this is your local drive.

Used Space Displays the amount of space used by video clips captured using the utility.



Setup Clicking this button opens the *Camera Setup* window.



Playback Clicking this button opens the *Video Playback* window.



Play Use this button to re-start viewing, after using the Stop or Pause button.



Pause Clicking this pauses the video stream.



Stop This terminates the connection to the camera, halting viewing and recording (if in progress). If stop is pressed while recording, the first click stops recording. The second click stops video streaming.



Record Clicking this button begins recording a video stream. While recording, this button will be blue. To stop recording, click the **Stop** button.



Snapshot Clicking this captures an image from the current video.



Zoom Clicking this magnifies a section of the window. Click the icon and then click the portion of the screen you want to magnify. Click the icon again to return magnification to normal.



Flip Video Click this to have the image swapped top-to-bottom.



Mirror Video Click this to have the image swapped left-to-right.



Sound On/Off Toggles the sound on or off.



Microphone Off Click this icon to turn the microphone on.



Microphone On This icon will appear when the microphone is on. The volume slider below will appear. Click this icon to turn the microphone off.



Volume When audio is available, raising or lowering this bar will change the volume.



Port 1 Off/On Allows you to manually turn off or on the output for port 1.



Port 2 Off/On Allows you to manually turn off or on the output for port 2.

Screen Layout Select the number of Channels (Cameras) to be displayed on screen.



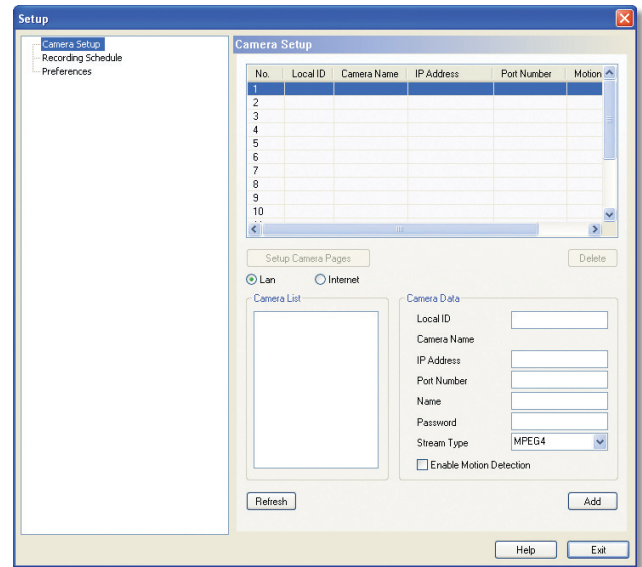
Monitor > Screen Layout

Setting Up Cameras

The Camera's setup functions are performed by clicking the **Setup** button on the *Video Monitor* screen. This will open the *Setup* screen.

Several setup options appear on the left-hand side of the screen. They are *Camera Setup*, *Recording Schedule*, and *Preferences*. Each of these options are described in the following:

Camera Setup



Monitor > Setup > Camera Setup

Adding a Camera

To configure a camera for display on the main screen, follow the directions below:

1. Select the appropriate Camera **No.** to configure.
2. Click **LAN** or **Internet**, depending upon how you are accessing the Camera.
3. Enter the Camera's data into the Camera Data fields:
 - **Local ID** Enter a name for the camera (this name will be the folder name for recorded video files).
 - **IP Address** Enter the camera's IP address here.
 - **Port Number** Enter the port number assigned to this camera. The port number is configured on the *Setup > Advanced Setup* screen in the web-based utility.
 - **User (Name)** Enter a valid user name configured in the Camera's web-based utility (Administration > Users).
 - **Password** Enter the password associated with the user name that was defined in the web-based utility.
 - **Stream Type** Select the desired video stream type

- **Enable Motion Detection** Select this option if you wish to enable it.
- 4. Click **Add** and the Camera will be added to the list of cameras if it has been properly configured.
- 5. Repeat steps 1-3 to add additional Cameras.
- 6. Click **Exit** to return to the *Video Monitor* screen.

Deleting a Camera

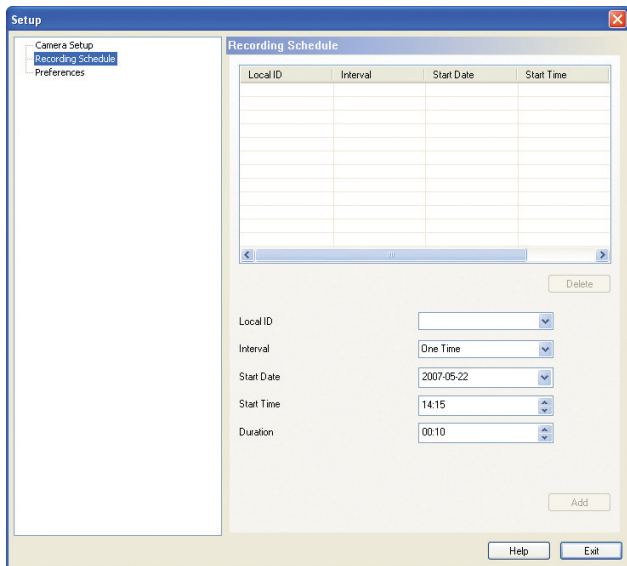
You can delete any of the sixteen cameras displayed from the Setup screen by doing the following:

1. Select the camera you want to delete from the list in the box at the top of the screen.
2. Click the **Delete** button.

Recording Schedule

Schedule a Recording

You can record video while watching, or schedule recordings to occur when you are absent. Recordings are stored on the hard drive of the computer running the Monitor application. Recordings can be played using the Playback utility.



Monitor > Setup > Recording Schedule

To set the Recording Preferences:

1. Enter the recording schedule's data into the drop-down fields on this screen:
- **Local ID** Select the Local ID of the Camera that you want to schedule for recording.
 - **Interval** Select when or how often you want this recording to occur.

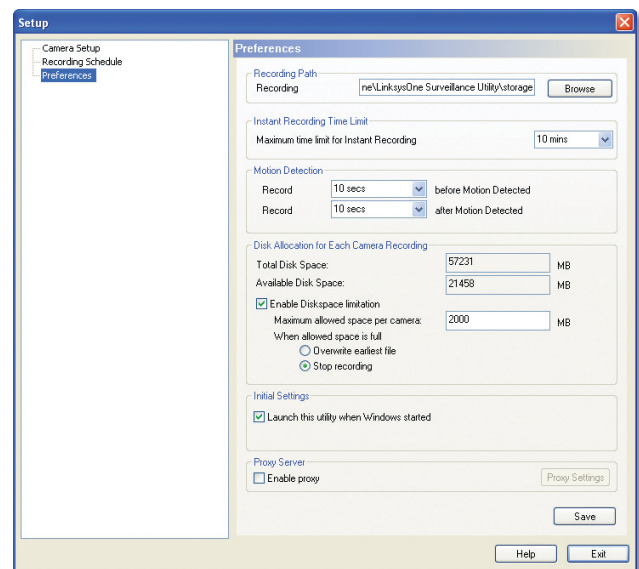
- **Start Date** From the calendar that appears when you click the drop-down menu, select the date when this schedule will begin.
 - **Start Time** Enter the time when this schedule will begin.
 - **Duration** Enter the amount of time before this schedule expires.
2. Click the line you wish to assign to the schedule in the box at the top of the screen.
 3. Click the **Add** button to schedule the recording.

Deleting a Schedule

You can delete any of the sixteen schedules displayed on this screen by doing the following:

1. Select the camera you want to delete from the list in the box at the top of the screen.
2. Click the **Delete** button.
3. Click the **Exit** button to close the Setup screen.

Preferences



Monitor > Setup > Preferences

Refer to the following when changing preferences.

Recording Path

Recording This is the Drive and Folder on your PC where recorded files will be saved. The default location is **C:\Program Files\LinksysOne\LinksysOne Surveillance Utility\Storage\Local ID\File Type**. You can also click the **Browse** button to select the desired drive and folder.

Instant Recording Time Limit

Maximum time limit for Instant Recording This sets the maximum size of a recording. (Recordings are started by clicking the **Record** button on the Main screen.)

Motion Detection

Record before Motion Detected Set the time so the Utility will start recording a certain time before the Utility detects motion in a Camera's field of view.

Record after Motion Detected Set the time so the Utility will stop recording a certain time after the Utility detects motion in a Camera's field of view.

Disk Allocation for Recording

Total Disk Space This shows the total amount of storage space on your hard drive.

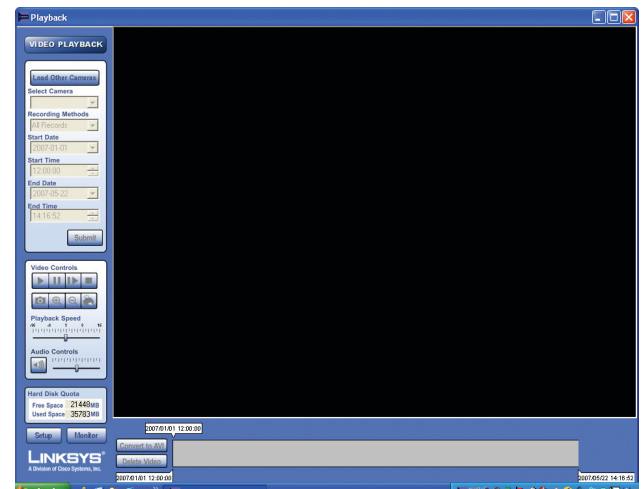
Available Disk Space This shows the amount of storage space available on your hard drive.

Enable Disk Space Limitation This feature allows you to limit the amount of space your recordings occupy on your hard drive. Click the box for this feature and then enter the Maximum Allowed Space in the next box. The Maximum Allowed Space is the amount of space on your hard drive you'll allow your recordings to take up, which should be smaller than the available room you have left on your drive along with space for your operating system and other programs. Plan for when that space gets full by clicking either **Overwrite Earliest File**, which will delete old recordings as new ones fill the space, or **Stop Recording**, which will end your recording once you fill the space. Allow a minimum of 300 MB storage space per camera. If you will be using the same drive that Windows is installed on to store your recordings, make sure you leave at least ten percent of available disk space free.

Initial Settings

Launch this Utility when Windows Started Check this to have this utility start when Windows starts.

Using the Playback Application



Playback

Video Playback

Load Other Cameras This option allows you to point to a specific folder to locate video from other cameras.

Select Camera Select the appropriate camera as defined within the Monitor.

Recording Methods There are four recording methods to choose from:

- **All Records** Displays all records for the selected Camera.
- **Select Period** Selecting this option will narrow down the video selections to the range defined within the start/end date/time fields.
 - **Start Date** Select a starting date from the calendar.
 - **Start Time** Select a starting time using the 24 hr time format.
 - **End Date** Select an ending date from the calendar.
 - **End Time** Select an ending time using the 24 hr time format.
- **Event Trigger** Selecting this option will limit the video selections to videos that were recorded because an event occurred.
- **Input Trigger** Selecting this option will limit the video selections to videos that were recorded because they were triggered by an input.

Submit Once all of the video search parameters have been defined, click this button to obtain your results.

Video Controls



Play Use this to re-start viewing, after using the Stop or Pause button.



Pause Clicking this pauses the video playback.



Frame by Frame This button is used to play the video one frame at a time.



Stop This will terminate the connection to the camera, halting both the viewing and the recording (if in progress).



Snapshot Clicking this captures an image from the current video.



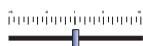
Zoom In This button is used to zoom in on the image.



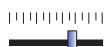
Zoom Out This button is used to zoom out the view.



Print This button is used to print the image.



Playback Speed This slide bar allows you to adjust the speed of the video playback.



Audio Controls This slide bar allows you to control the volume level.



Sound On/Off Toggles the sound on or off.

Convert to AVI Click this button to convert video to the AVI format. AVI files can be played in Windows Media Player.

Delete Video This button allows you to delete unwanted video.

Hard Disk Quota

Free Space Displays the amount of available space on the hard disk.

Used Space Displays the total amount of space used on the hard disk.

Setup Clicking this button opens the *Camera Setup* window.

Monitor Clicking this button opens the *Monitor* window.

Chapter 6: Advanced Configuration



NOTE: By default the camera is set to receive an IP address from a DHCP server. If you do not have a DHCP server on your network, you can set a static IP address by pressing the **Reset** button on the camera for less than 10 seconds. A default IP address of **192.168.1.99** will be assigned to the camera.

Open your web browser and enter the assigned IP address in *Address* field in the following format:

Address	http://192.168.1.99
---------	---------------------

Address Bar

Press the **Enter** key and the *Login* screen will appear.

The first time you open the web-based utility, enter **admin** (the default user name) in the *User name* field and leave the password blank. Click the **OK** button. You can set a password later from the Admin tab's *User Accounts* screen.

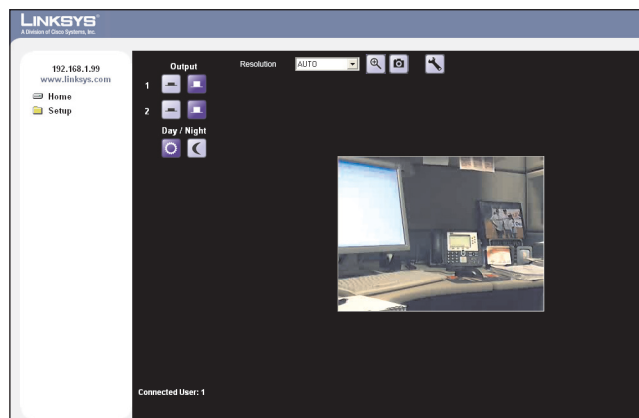
Login

Home

The *Home* screen is the first screen that is displayed. Below the Home icon there is a Setup folder icon. Clicking on the Setup icon expands the configuration options. There are 6 main headings: **Setup**, **Administration**, **Audio/Video**, **Applications**, **Status**, and **View Video Log**. Each tab contains screens that will help you configure and manage the Camera.

Home

The *Home* screen is where live video can be viewed and the output can be updated.



Setup > Summary

Output

- 1 The output can be turned on or off.
- 2 The output can be turned on or off.

Resolution Select the desired resolution or the default setting of **AUTO** to let the camera determine the resolution.



On This icon will turn on the selected output.



Off This icon turns off the selected output.



Day This icon uses the standard filter for day output.



Night This icon uses a filter for night vision.



Zoom This icon allows you to zoom in on a selected area. The camera allows 2x and 4x zoom.



Snapshot Capture a snapshot image of the video displayed on screen by clicking this icon.



Audio Disabled This icon indicates that audio is not enabled on the device.



Video Format This icon allows you to select the video format of the video being captured by the camera.

Resolution

Setup > Basic Setup

Setup > Basic Setup

Device Settings

Device ID This displays the ID for the Camera. This is used by the setup wizard, viewer and the recorder utility to identify the Camera.

Camera Name Enter the preferred name for the Camera. The camera name must not exceed 15 alphanumeric characters.

Description This field is used for entering a description, such as the location of the Camera. Entering a description will help you identify the Camera. It must not exceed 32 alphanumeric characters.

Bonjour Name Enter the preferred name for identifying your Bonjour connection.

Enable LED Operations Enable this if you want to turn on the LED.

Current Date/Time It displays the current date and time. If it's not correct, click the **Change** button to modify the time settings.

Set Date/Time

Setup > Basic Setup > Set Date/Time

PC's Date and Time Displays the current time of the PC connected to the web-based utility.

Camera Date and Time Displays the current time as configured on the camera.

Sync with PC This option allows you to synchronize the camera to the clock on the PC connected to the web-based utility.

New Date This option allows you to manually enter the date for the camera.

New Time This option allows you to manually enter a new clock setting for the camera.

Set New Time Use this button to implement the new date and/or time setting.

Time Zone Choose the time zone for your location from the drop-down list.

Adjust for Daylight Saving Time Select this option if your location is currently using Daylight Saving Time.



NOTE: You must uncheck the *Adjust for Daylight Saving Time* check box manually when Daylight Saving Time ends in your time zone.

Check here if you want to update the time automatically through the NTP Server on the Internet Enable or disable the time server feature as required. If enabled, the Camera will contact a network time server at regular intervals and update its internal timer.

NTP Server Address Enter the address of the NTP Server.

NTP Port The default NTP port is 123. If using a different port, enter the NTP port number (1024 to 65535) in the field provided.



NOTE: If connecting to a router, it may be necessary to enable port forwarding.

Network Settings

Configuration Type

- **Obtain An IP Address Automatically** The camera defaults to this option, allowing a DHCP server on your network to automatically assign the Camera an IP address.
- **Fixed IP Address** Use this option to assign a fixed (static) IP address to the Camera. Assign an IP address that is unique to your local network. When using a fixed IP address, you must configure the IP Address, Subnet Mask, Gateway and DNS.

IP Address The IP address assigned to the Camera is displayed.

Subnet Mask The Subnet Mask assigned to the Camera is displayed.

Gateway IP address of the gateway router between this device and management stations that exist on other network segments.

Primary DNS The IP address of your ISP's primary server, which translates the names of websites into IP addresses.

Secondary DNS The IP address of your ISP's secondary server, which translates the names of websites into IP addresses.

Wireless Settings



NOTE: The wireless settings are only found on the WVC2300 camera.

SSID Enter the network's SSID or network name here.

Network Type Select the network's mode, Infrastructure or Ad-hoc.

Channel No If the Camera is set to ad-hoc mode, select its channel setting from the drop-down menu.

Security Click the **Edit Security Settings** button to display the *Wireless Security* screen.

Security Mode

Select the appropriate option based on your wireless network configuration.

Disabled

This option implements no security on your wireless network. Data is not encrypted before transmission.

WEP

WEP is a basic encryption method, which is not as secure as later methods such as WPA-Personal or WPA2 Personal. However, it is supported by all clients.

Wireless Security > Security Mode > WEP

TX Key Select the number of the key used on the wireless network.

WEP Encryption Select the appropriate option for key length based on your network settings.

Passphrase Type in the passphrase used to generate WEP keys on your network and click the **Generate** button.

Key 1-4 Key values can be entered in manually or generated from a passphrase.

Authentication Select the appropriate authentication type used on the wireless network.

WPA /WPA2 Personal

This method offers two encryption methods, TKIP and AES, with dynamic encryption keys

Wireless Security > Security Mode > WPA /WPA2 Personal

Encryption This cannot be modified.

Shared Key Enter the shared key used for accessing the wireless network.

WPA /WPA2 Enterprise

The screen options vary depending upon the protocol type selected.

Protocol Type Select EAP-TLS or EAP-TTLS.

Wireless Security > Security Mode > WPA /WPA2 Enterprise (EAP-TLS)

- **User ID** The user ID used to login to your RADIUS server.
- **Root CA** A root certificate is an unsigned public key certificate, or a self-signed certificate, which implies that you trust your browser's publisher to include correct root certificates, and in turn the certificate authorities it trusts, and anyone to whom the CA may have issued a certificate-issuing-certificate, to faithfully authenticate the users of all their certificates.
- **User CA** A user certificate is a signed private key

certificate, which implies that you trust your browser's publisher to include correct user certificates, and in turn the certificate authorities it trusts, and only user to whom the CA may have issued a certificate-issuing-certificate, to faithfully authenticate the users of all their certificates.

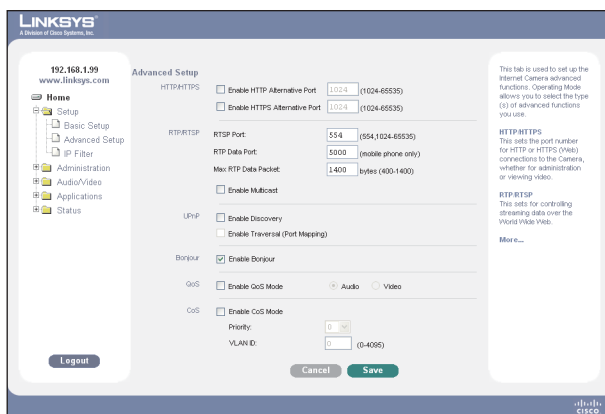
- **Password** This is for this Camera's client login to the RADIUS server, and must match the key stored on the RADIUS server.



Wireless Security > Security Mode > WPA/WPA2 Enterprise (EAP-TTLS)

- **Process Method** Choose an authentication method as required to handle the processing and transmitting of CA to your RADIUS server.
- **User ID** The user ID used for login to your RADIUS server.
- **Password** This is for this Camera's client login to the RADIUS server.
- **Anonymous ID** The unsigned public ID used for login to your RADIUS server.
- **Root CA** A root certificate is an unsigned public key certificate, or a self-signed certificate, which implies that you trust your browser's publisher to include correct root certificates, and in turn the certificate authorities it trusts, and anyone to whom the CA may have issued a certificate-issuing-certificate, to faithfully authenticate the users of all their certificates.

Setup > Advanced Setup



Setup > Advanced Setup

HTTP/HTTPS

Enable HTTP Alternative Port This option allows you to define the port number used to communicate with the camera using an HTTP connection. The default value is **1024**. A value in the range of 1024-65535 can be defined.

The port number must be specified in the URL when accessing the Camera's web-based utility via the LAN or Internet. For example, if the Camera's IP address is 192.168.1.99 and the port is defined as 1028, you would specify the following address: **http://192.168.1.99:1028**.

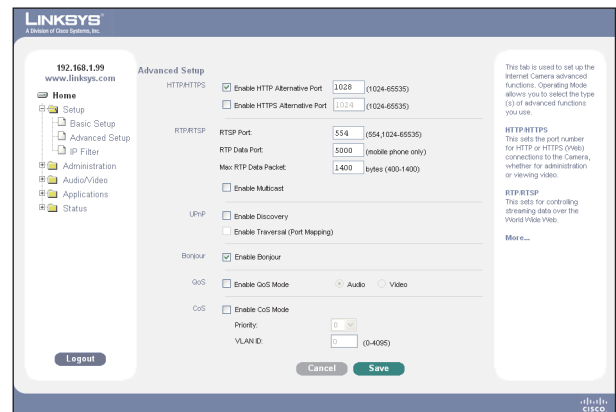
Enable HTTPS Alternative Port This option allows you to define the port number used to communicate with the camera using an HTTPS connection. The default value is **1024**. A value in the range of 1024-65535 can be defined. When using a secure connection, video is not available. This option is used only for configuration.

The port number must be specified in the URL when accessing the Camera's web-based utility via the LAN or Internet. For example, if the Camera's IP address is 192.168.1.99 and the port is defined as 1032, you would specify the following address: **https://192.168.1.99:1032**

Setting Up Port Forwarding

After configuring a port in the web-based utility of the Camera, most users will need to set up port forwarding on their router. The following are the steps for configuring port forwarding on a WRT54G router (other routers should be similar, consult your router's documentation):

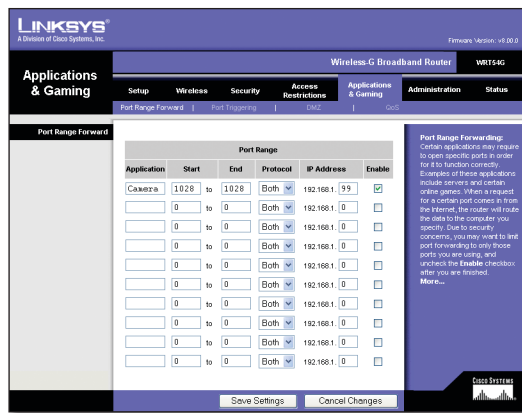
1. In the Camera's web-based utility, go to the *Setup > Advanced Setup* screen. The option *Enable HTTP Alternative Port* must be enabled and the desired port value entered. In this example, port 1028 has been configured. Valid port settings are 1024-65535.



2. Enter the IP address of your router in your web browser's *Address* field and press **Enter**. In this example, the default IP address of the WRT54G router is used (**192.168.1.1**).



3. Enter the login name and password to access the router's web-based utility.
4. In the web-based utility, go to the *Applications & Gaming* tab.



WRT54G Web-Based Utility

5. On the *Port Range Forward* screen, enter the *Application* name such as **Camera**.
6. Enter the *Start* and *End* port, in this instance **1028** is used.
7. Ensure the *Protocol* set to **Both**.
8. Complete the *IP address* of the Camera, such as **99** in the field provided.
9. Click the **Save Settings** button at the bottom of the screen to save the configuration to the router.

Once port forwarding has been configured, the router can be accessed over the Internet by typing in the Internet IP address of the router, a colon, and the defined port number in the following format: **http://ipaddress:port**

RTP/RTSP

RTSP (Real Time Streaming Protocol) is a standard for connected client(s) to control streaming data (MPEG-4) over the World Wide Web.

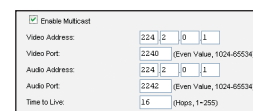
RTP (Real-Time Transport Protocol) is an Internet protocol used for transmitting single real-time multimedia data such as audio and video to a select group of connected clients. RTSP uses RTP to format packets of multimedia content.

RTSP Port Enter the RTSP Port number (between 1024 to 65535) in the field provided. The default RTSP port is **554**.

RTP Data Port The Camera's data port number has been pre-configured and can be used for multicasting. It does not normally need to be re-configured. If a port number does need to be changed, please contact your network administrator. If a change is necessary, enter the data port number (1024 to 65535) in the field provided. The default RTP port is **5000**.

Max RTP Data Packet This allows you to define the maximum size of the RTP data packets. The length can be between 400 to 1400 bytes. The default value is **1400** bytes.

Enable Multicast The Camera's Video and Audio IP Addresses have been pre-configured and can be used for multicasting. Normally these settings do not need to be reconfigured. If an address does need to be changed, please contact your network administrator.



Advanced Setup > RTP/RTSP > Enable Multicast

- **Video Address** Enter the address.
- **Video Port** Enter the port number.
- **Audio Address** Enter the IP address.
- **Audio Port** Enter the port number.
- **Time to Live** Define the number of hops (the number of network routers that can be passed before the multimedia data packets arrive at their destination or are dropped) that can occur before the packets are dropped. A value in the range of 1 to 255 can be defined. The default value is **16**.

UPnP

Enable Discovery If enabled, the Camera will broadcast its availability through UPnP. UPnP compatible systems such as Windows XP will then be able to detect the presence of the Camera.

Enable Traversal (Port Mapping) If enabled, HTTP connections (from your web browser, viewer and recorder utility) can use an alternative port instead of port 80 (the standard HTTP port) to access the Camera.

Bonjour

Enable Bonjour If enabled, the Camera will be accessible through Bonjour connections.

QoS

Enable QoS Mode QoS (Quality of Service) mode is disabled by default. To enable QoS mode, select this option and select either audio or video for its guaranteed throughput level. Enable QoS mode will automatically enable WMM (802.11e QoS) when in wireless mode.

**WMM (Wi-Fi Multimedia) is a standard created to define quality of service (QoS) in Wi-Fi networks. It is a precursor to the IEEE 802.11e WLAN QoS draft standard, which is meant to improve audio, video and voice applications transmitted over Wi-Fi. WMM adds prioritized capabilities to Wi-Fi networks and optimizes their performance when multiple concurring applications, each with different latency and throughput requirements, compete for network resources.*

CoS

Enable CoS Mode CoS (Class of Service) mode is disabled by default. To enable CoS mode, please check the check box.

Priority Priority can be set to a value between 0 to 7. The highest priority value is 7.

VLAN ID Enter the VLAN ID (0 to 4095) in the field provided.

Setup > IP Filter

The *Setup > IP Filter* screen can be used to deny or allow a specific IP address or range of IP addresses.

Setup > IP Filter

Options There are three options to choose from:

- **Disable** This option disables IP filtering function.
- **Enable and Deny the Following IP Address** This function will allow you to deny access to a specific IP address or range of IP addresses. Choose **Single** to enter a specific IP address or **Range** to enter a range of IP addresses. Up to 10 values can be configured.

- **Enable and Allow the Following IP Address** This option will allow only the IP addresses specified here to access the camera. Choose **Single** to enter a specific IP address or **Range** to enter a range of IP addresses. Up to 10 values can be configured.

Administration > Users

Administration > Users

Administrator

Admin The default administrator name cannot be changed but the password can and should be changed for security purposes. To change the password, enter the desired password in the *Password* and *Confirm Password* fields. Click the **Change** button to apply the change.

Demo

Viewer This account can be used to allow the viewing of video only. By default the account name is **demo** and there is no password assigned. To change the demo account settings, modify the user name and password in the appropriate fields and click the **Change** button.

User List

User ID The User ID cannot be modified.

User Name Enter the desired user name.

Password Enter the desired password in this field.

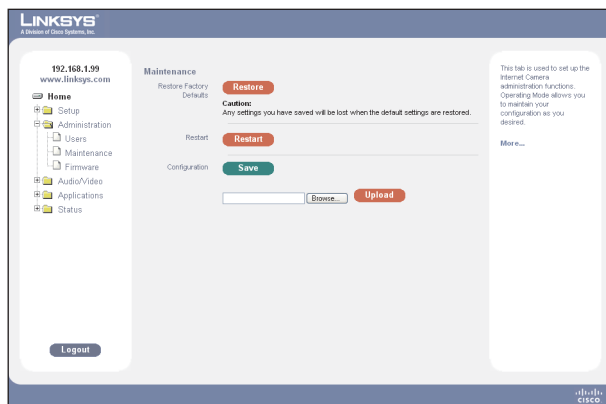
Confirm Password Retype the password in this field.

Privilege Level Select the appropriate privilege level from the drop-down menu. Choose from one of the following options:

- **Administrator** This option provides the specified user with full Camera administration and control privileges.
- **Monitor** This option grants the specified user with control of the Camera video (manually pan/tilt, toggle between day/night vision, and trigger output ports).
- **Viewer** This option grants the specified user with video viewing privileges only.

Click the **Add** button to add a new User ID or click the **Delete** button to remove an existing User ID.

Administration > Maintenance



Administration > Maintenance

Restore Factory Defaults

Restore This option restores the Camera to the factory default settings.

Restart

Restart This option restarts the Camera.

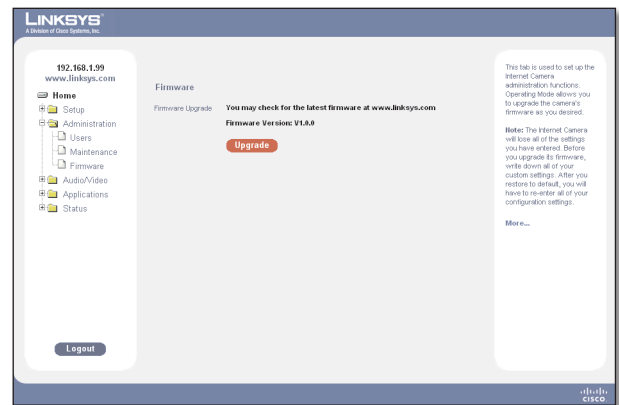
Configuration

Save Use this option to save a configuration file containing all of the current Camera management settings.

Browse Use this option to locate a previously saved configuration file.

Upload Use this button to upload a previously saved configuration file into the Camera.

Administration > Firmware



Administration > Firmware

Firmware Upgrade

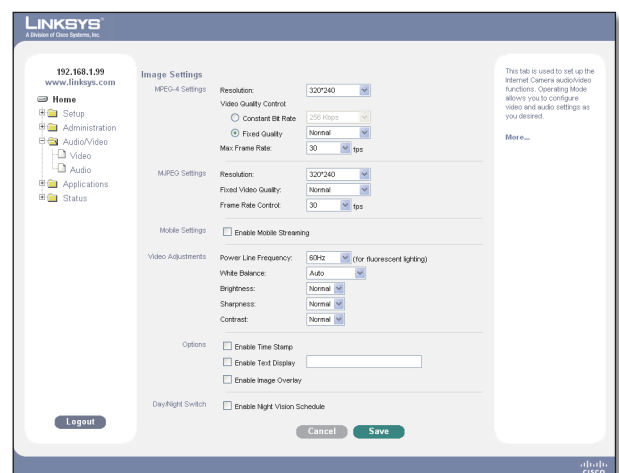
Upgrade This option is used to update the Camera's firmware. To update the firmware, perform the following steps:

1. Download the latest firmware for the Camera to your computer from **www.linksys.com**.
2. Click the **Upgrade** button to open the *Upgrade Firmware* window.
3. Click the **Browse** button to locate the firmware upgrade file.
4. Click the **Upgrade** button to begin the firmware upgrade.



WARNING: Do not disconnect the power to the camera during the upgrade process.

Audio/Video > Video



Audio/Video > Video



NOTE: Higher video quality settings and higher frame rate settings require more bandwidth. Refer to the Appendix titled “Bandwidth Usage” for additional details.

MPEG-4 Settings

Resolution Select the desired video resolution setting. The default resolution is set to **320x240**.

Video Quality Control Choose one of the following:

- **Constant Bit Rate** Select the desired fix bit rate. The default bit rate is set to **256 Kbps**.
- **Fix Quality** Select the desired fix quality. The default fix quality is set to **Normal**.

Max Frame Rate Select the desired maximum frame rate. The default maximum frame rate is set to **30 fps**.

MJPEG Settings

Resolution Select the desired video resolution format. The default resolution is set to **320x240**.

Fixed Video Quality Select the desired fix quality. The default fix quality is set to **Normal**.

Frame Rate Control Select the desired frame rate. The default frame rate is set to **Auto**.

Mobile Settings

Enable Mobile Streaming Enable streaming video for the mobile devices by selecting this option.

- **Resolution** The default resolution is set to **160x120**.
- **Video Quality Control** Choose from one of the following options:
 - **Constant Bit Rate** Select the desired fix bit rate. The default bit rate is set to **32 Kbps**.
 - **Fix Quality** Select the desired fix quality. The default fix quality is set to **Normal**.
- **Max Frame Rate** Select the desired maximum frame rate. The default maximum frame rate is set to **15 fps**.
- **Access Code** Enter a code to use to access the live video from the Camera through cell phone connection.

Video Adjustments

Power Line Frequency Select the power line frequency (50Hz or 60Hz) used in your region, to improve the picture quality under fluorescent lighting.

White Balance Select the suitable white balance option as you desired.

Brightness If necessary, you can adjust the brightness to obtain a better image. For example, if the camera is facing a bright light, the image may be too dark. In this case, you can increase the brightness.

Sharpness Select the desired option for the sharpness. You can select a sharpness value between -3 and 3.

Contrast Select the desired option for the contrast. You can select a contrast value between -3 and 3.

Options

Enable Time Stamp If you want to display a time stamp on the video, enable this feature by checking the check box.

Enable Text Display If you want to display text on the video, enable this feature by checking the check box. The text can be up to 20 characters in length. This feature is often used to identify the Camera location when multiple Cameras are installed.

Enable Image Overlay If you want to display an image on the video, enable this feature by checking the check box.

- **Linksys Logo** This option will display a Linksys logo on top of the video. Positioning of the logo is determined by the x and y coordinates defined in the *Image Position* fields. Be sure not to define a position that is outside of the defined resolution.
- **User Defined Image** This option allows you to upload a bitmap image file (smaller than 64Kb).
- **Image Position** The *Image Position* fields allow you to define the coordinates of the Linksys logo or user defined image. The upper left corner value is 0, 0. Increasing the X value (X: 0 - 639) will move the image to the right. Increasing the Y value (Y: 0 - 479) will move the image down.



NOTE: Select values within the range of the selected image resolution.

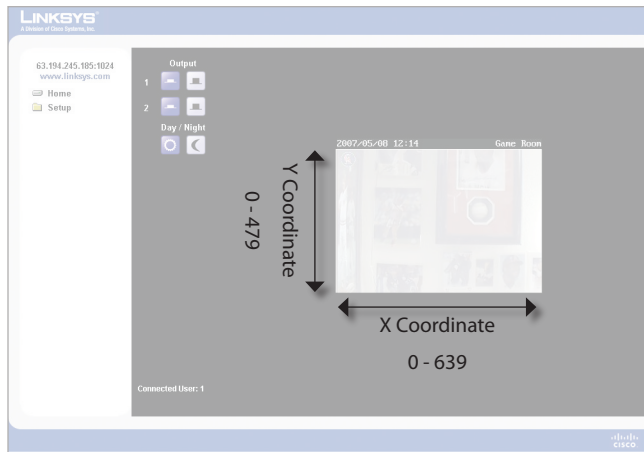


Image Position

- **Transparent Color** This option allows you to define a color that should appear transparent. This allows a logo or other image to appear over the video without displaying a solid background color. The color value must be entered in RGB hexadecimal color code, such as 0000ff.

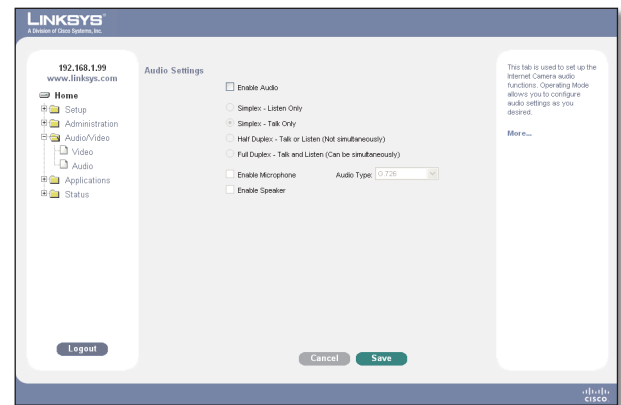
Day/Night Switch

Color cameras can capture infrared radiation as well as visible light. The Camera is equipped with an IR-cut filter that prevents distortion of colors the human eye can see. To use the Camera in locations with poor lighting or at night, the IR-cut filter can be manually turned off or a schedule can be used to turn off the filter at a set time. An infrared lamp can be used to improve illumination in night surveillance applications without producing any extra visible light. This is all done by using the IR filter switcher that is built-in to the camera.

Enable Night Vision Schedule Enable Day / Night switch schedule by checking this check box.

- **Start Time** Select the evening start time by selecting the hour and minute (uses 24 hour time format).
- **End Time** Enter the hour in the morning to end the night vision feature, by selecting the hour and minute (uses 24 hour time format).

Audio/Video > Audio



Audio/Video > Audio

Audio Settings

Enable Audio Enable audio by checking the check box.

Audio Settings

Mode	Function
Simplex - Talk Only	Enables the speaker jack
Simplex - Listen Only	Enables the microphone jack
Half Duplex - Talk or Listen (Not simultaneously)	Enables the speaker and microphone jack but only one can be used at a time
Full Duplex - Talk and Listen (Can be simultaneously)	Enables the speaker and microphone jack and both can be used simultaneously

Audio Type When the microphone is enabled, this drop-down menu allows you to select the audio compression type.

Compression Settings

Setting	Description
G.726	Default audio compression algorithm, uses 32 Kbps of bandwidth with quality similar to G.711 but using only half of the bandwidth. If the audio quality is not good, be sure to select a G.711 compression setting instead.
G.711 A-Law	A standard compression algorithm that uses 64 Kbps of bandwidth and is primarily used in Europe.
G.711 μ -Law	A standard compression algorithm that uses 64 Kbps of bandwidth and is primarily used in North America and Japan.

Applications > Mail & FTP

Applications > Mail & FTP

Mail



NOTE: Only one SMTP server is used, even if both the primary and secondary SMTP servers are enabled.

Primary SMTP Server

Primary SMTP Check the box to upload to the Primary SMTP.

SMTP Mail Server Enter the address of the SMTP (Simple Mail Transport Protocol) Server to be used to send E-mail.

Authentication Choose from one of the following options:

- **Not Required** Authentication is not required in order to send mail.
- **Requires SMTP Authentication** Select this if the SMTP Server requires a “login” to send mail.
- **Requires POP before SMTP** Select this if the SMTP Server requires a POP “login” to send mail.

Secondary SMTP

Secondary SMTP Check the box to upload to the Secondary SMTP if the camera can not connect to the primary SMTP.

Authentication Choose from one of the following options:

- **Not Required** Authentication is not required in order to send mail.
- **Requires SMTP Authentication** Select this if the SMTP Server requires a “login” to send mail.
- **Requires POP before SMTP** Select this if the SMTP Server requires a POP “login” to send mail.

E-mail Setup

Send To Enter at least one (1) e-mail address; the 2nd and 3rd addresses are optional. The e-mail alert will be sent to the e-mail address or addresses specified here.

Show “From” as Enter the e-mail address to be shown in the *From* field when the e-mail is received.

Subject Enter the desired text to be shown as the subject for the E-mail when it is received

E-mail Body

Attach Video Streaming URL Address This option includes the streaming video URL address in the E-mail alert, when the recorded video file is too big to be sent.

FTP



NOTE: Only one FTP server is used, even if both the primary and secondary FTP servers are enabled.

Primary FTP

Primary FTP Check the box to upload to the Primary FTP.

FTP Server Enter the address of the primary FTP Server.

Login Name Enter the login name associated with the specified primary FTP server.

Password Enter the password associated with the login name for the primary FTP server.

File Path Name Enter the desired file path name on the primary FTP server.

Enable Passive Mode Check the box to enable the Passive mode feature.

Secondary FTP

Secondary FTP Enable this option to allow the camera to connect to a secondary FTP server if the primary FTP server is not available

FTP Server Enter the address of the secondary FTP Server.

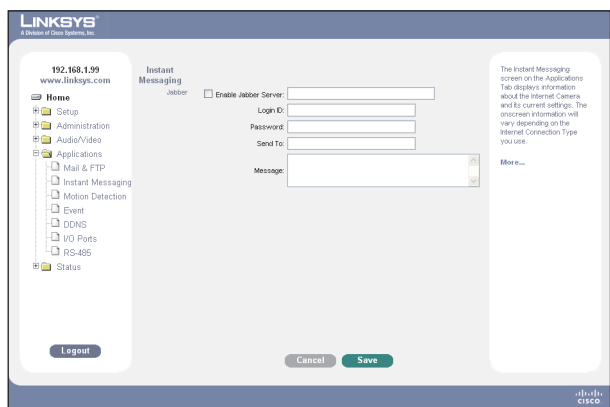
Login Name Enter the login name associated with the secondary FTP server.

Password Enter the password associated with the login name for the secondary FTP server.

File Path Name Enter the desired file path name on the secondary FTP server.

Enable Passive Mode Check the box to enable the Passive mode feature on the secondary FTP server.

Applications > Instant Messaging



Applications > Instant Messaging

Jabber

Enable Jabber When enabled, an open XML protocol for message and presence exchange in real time between two points on the Internet. Jabber asynchronous instant messaging (IM) platform is similar to IM systems such as AIM, ICQ and MSN but is open source, extensible through XML, decentralized (allowing anyone to run a Jabber server), and any Jabber server can be isolated from the public Jabber network in order to increase security.

Server Enter the address of your Jabber server.

Login ID Enter the login name for your Jabber server.

Password Enter the password for your Jabber server

Send To The log will be sent to the e-mail address you specified here.

Message Enter the message you wish to attach.

Applications > Motion Detection



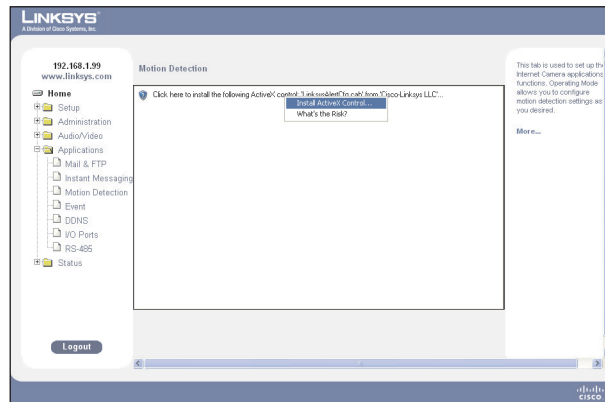
NOTE: Motion detection cannot be configured using the Firefox browser. Internet Explorer must be used to configure motion detection.

You can set the area(s) of the video image to be examined, and adjust the sensitivity of detection for each area.



NOTE: Motion detection can be triggered by rapid changes in lighting conditions, as well as by moving objects. For this reason, it should only be used indoors.

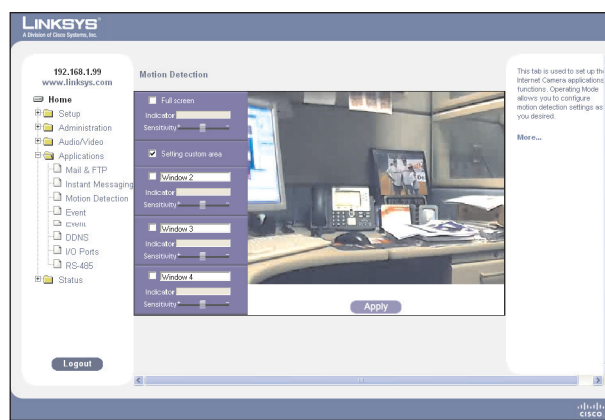
When you first select the Motion Detection option, you will be prompted to install an Active-X plug-in. It is necessary to install this plug-in to use this feature.



Applications > Motion Detection (Install Active-X)



Active-X Message



Applications > Motion Detection

Full Screen Enable this option to detect motion events within the full view of the screen.

- **Indicator** This area displays the level of motion detected. This option cannot be configured but is useful for determining a motion threshold.
- **Sensitivity** Use this to adjust the motion sensitivity.

Setting Custom Area Enable this option to capture motion within defined areas of the video screen. Multiple windows with varied threshold settings may be used.

- **Window 2-4** Enable one or more of these options to detect motion in specific areas of the video screen. Windows can be defined by simply extending the window with the cursor. More than one window can be used at once.
- **Indicator** This area displays the level of motion detected. This option cannot be configured but is useful for determining a motion threshold.
- **Sensitivity** Use this to adjust the motion sensitivity.

Applications > Event

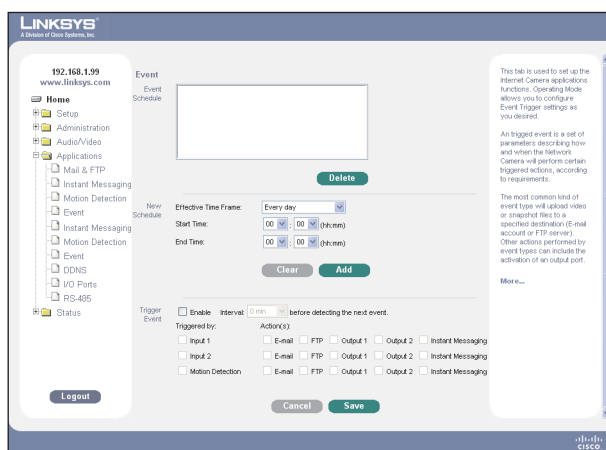
This tab is used to set up the Internet Camera applications functions. Operating Mode allows you to configure Event Trigger settings as you desired.

A triggered event is a set of parameters describing how and when the Network Camera will perform certain triggered actions, according to requirements.

The most common kind of event type will upload video or snapshot files to a specified destination (E-mail account or FTP server). Other actions performed by event types can include the activation of an output port.



NOTE: It is important to note that adding a new event will stop any event that is currently running. A scheduled event will automatically resume, if the time is still within the scheduled period. A triggered event will need to be re-triggered.



Applications > Event

Event Schedule

The Event Schedule displays the effective time frame and start/end times for scheduled events.

New Schedule



NOTE: The Network Camera can be configured for up to 10 events.

Effective Time Frame Select the event time frame, available options are every day, weekdays, or a specific day of the week.

Start Time Select the event start time in hours and minutes (use the 24 hour time format).

End Time Select the event end time in hours and minutes (use the 24 hour time format).

Trigger Event

Enable Check to perform all of the event(s) that were configured and scheduled.

Interval Select the desired option for the events interval. (* "0 sec" = No Delay)

Triggered by Select a trigger option:

- **Input 1/2** This describes the states that the input(s) must be in for an event to be triggered. Only one input can be used, also note that the states for all the inputs used must first be reached before the event will be triggered.
- **Motion Detection** Movement in a motion detection window can be used to trigger events. Select the motion detection window from the drop-down list.

Action(s) Select one or more actions to perform once a trigger event occurs, choose from the following options:

- **E-mail** Send an e-mail to the account configured from the *Applications > Mail & FTP* screen.
- **FTP** Upload the images to the primary or secondary FTP server defined on the *Applications > Mail & FTP* screen.
- **Output 1/2** These options are configured from the *Applications > I/O Ports* screen.
- **Instant Messaging** These options are configured from the *Applications > Instant Messaging* screen.

Event Attachment



Applications > Event > Event Attachment

When trigger events are enabled and an e-mail or FTP action is selected, the following options are enabled:

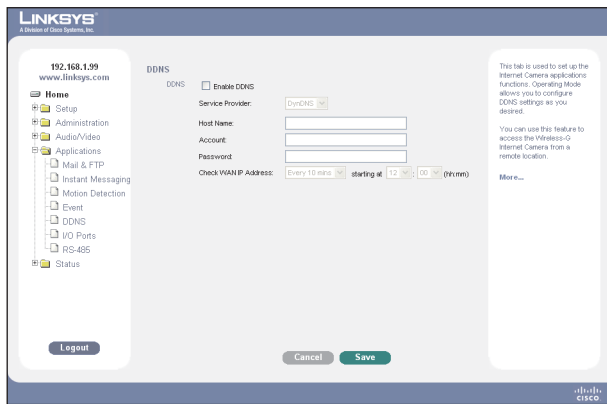
Overwrite/Replace oldest video file Check to overwrite/replace the oldest video clip with the current recording when detecting device's SDRAM is full.

Attachment Type Select the type of attachment:

- **JPEG Image** Select this to send image captures.
 - **Frame Rate** Select the desired capture rate for the JPEG image(s) here.
 - **Pre/Post Capture** Select the desired length. The snapshot(s) of the JPEG image depends on this setting, and also the file size and degree of compression.
- **Video**
 - **Video Format - (MPEG-4 Mode Only)** Select the desired type for the video file.
 - **ASF (Do not select this format if using Windows Vista)**
 - **MP4 (no audio)**
 - **3GP (no audio)**

Pre/Post Capture Select the desired length. The size of the file depends on this setting, and also the Video size and degree of compression.

Applications > DDNS



Applications > DDNS

DDNS

Enable DDNS This option will enable Dynamic Domain Name Service (DDNS). When used with a DDNS service provider, you can access your camera over the Internet using a domain name instead of an IP address.

Service Provider Select the service provider that you have an account with. If you do not have an account, you can select a service provider and click the Web Site button.

Host Name Enter the host name (Domain Name) allocated to you by the DDNS Server provider.

Account Enter the login name for the DDNS account.

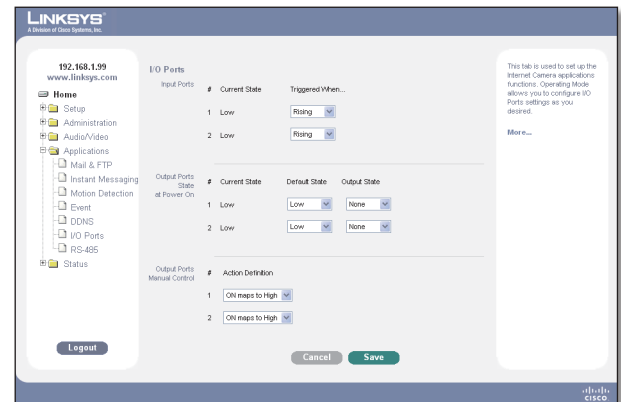
Password Enter the password for the DDNS account.

Check WAN IP Address This option allows you to set how often the device should check to see if the Internet IP address has changed. If the IP address has changed, the DDNS Server will be notified.



NOTE: To complete the DDNS Service setup, port forwarding needs to be configured on your router.

Applications > I/O Ports



Applications > I/O Ports

See *Appendix D: Specifications > I/O Port Specifications* for additional details.

Input Ports

Displays the port number.

Current State Indicates the current status of input device (ex. Alarm Sensor or Smoke Sensor) that you connected.

Triggered When There are 4 triggering conditions that can be set. The input port will be activated if the triggering condition changes so that it no longer equals to the current state.

- **High**
- **Low**
- **Rising**
- **Falling**

Output Ports State at Power On

In the Camera, as long as both output's Default and Current State is High, the output is disconnected (floating). When the current State changes to Low or Low Pulse, the output will be activated.

Displays the port number.

Current State Displays the current state of the port.

Default State The default setting for the Default State option is **High**. While the Camera is restarting, the output will be in the Default State (i.e. High) for at least as long as it takes for the Camera to fully initialize. Please consider this carefully when connecting equipment to the output. After a full restart, the unit will then switch to Low or Low Pulse (but only if configured to do so).

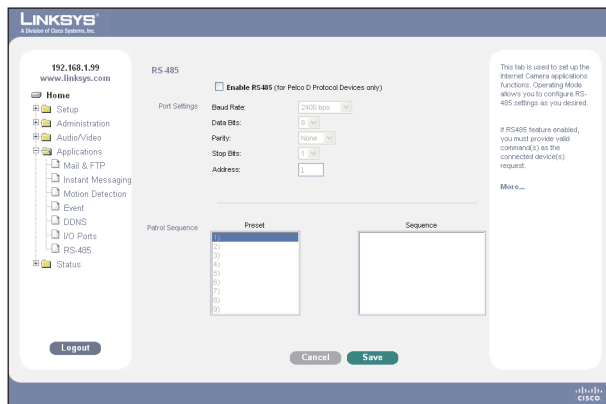
Output State Changing and saving Output State settings on this page will also reset outputs to their Default States. The state will be correct the next time the triggering event activates the output.

Output Ports Manual Control

Displays the port number.

Action Definition Defines the output port mapping.

Applications > RS-485



Applications > RS-485

Enable RS485 If the RS485 feature is enabled, valid command(s) must be provided as requested by the connected device(s).

Port Settings

Baud Rate Select the desired baud rate for the device you connected.

Data Bits Select the desired data bits for the device you connected.

Parity Select the desired parity type for the device you connected.

Stop Bits Select the desired stop bits for the device you connected.

Address Enter the valid logical address of the receiver/driver being controlled.

Preset Position

Set Preset Position This button will bring up the *Set Pan/Tilt* screen that allows you to define the preset point position.

Pan/Tilt

Set Home Set the desired position and then click this button to define the home position.

Preset List Select the desired preset position, the screen will update with the current data for the selected preset. If you don't need the desired preset position, click the **Remove** button to remove.

Preset Name Enter a suitable name for the current desired position and then click the "Add" button to add into the preset list.

Pan Speed Select the desired speed for camera panning.

Tilt Speed Select the desired speed for camera tilting.

Patrol Sequence

This feature determines how the camera will move when it is set to Rotate. You can set a number of preset positions; the camera will go to the first position, then move through the list of preset positions until it is finished. The camera will stop at the last position in the list.

To create the preset sequence, select the desired Preset in the left column, and click the **Add >>** button. Repeat until the desired sequence is complete.



NOTE: You can add the same preset position more than once; this can be used to make the camera stay longer at one position.

To delete a position from the sequence, select the desired position and click the **Remove** button.

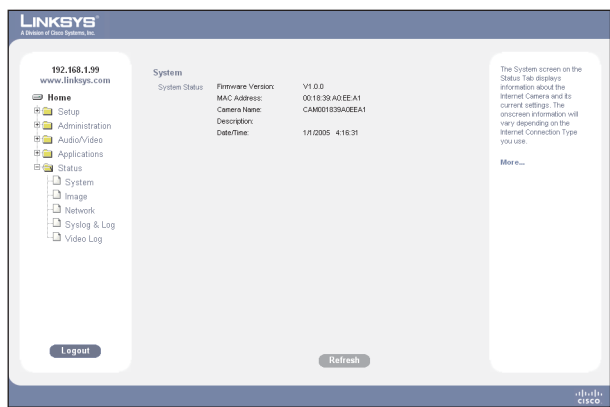
Preset Displays a list of available presets to choose from.

Sequence Displays the order of presets in the sequence.

Add >> Use this button to add a preset to the sequence.

Remove Use this option to remove a preset from the sequence.

Status > System



Status > System

System Status

Firmware Version The version of the firmware currently installed is displayed. Firmware can be upgraded from the *Administration > Firmware* screen. You must be logged in with administrator privileges to upgrade the firmware.

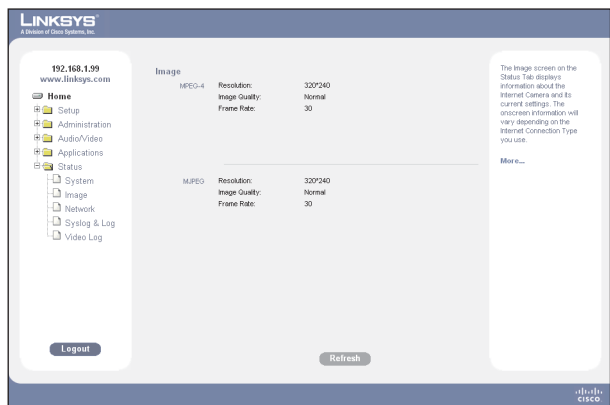
MAC Address This displays the MAC address of the camera.

Camera Name This displays the name of the camera, as defined on the *Setup > Basic Setup* screen.

Description This displays the description of the camera, as defined on the *Setup > Basic Setup* screen.

Date/Time This displays the current date/time as configured on the camera.

Status > Image



Status > Image

MPEG-4

Resolution This displays the image size of the video stream.

Image Quality This displays the image quality of the video stream.

Frame Rate This displays the frame rate of the video stream.

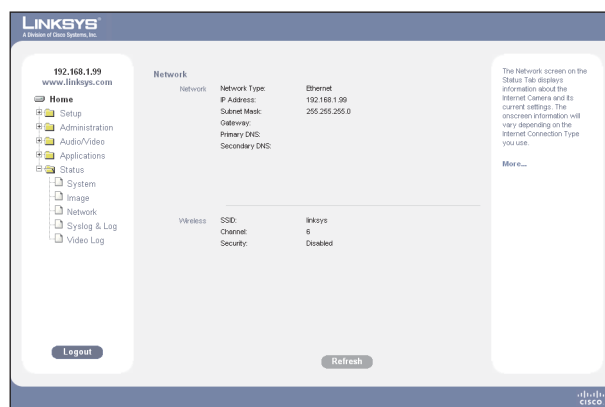
MJPEG

Resolution This displays the image size of the video stream.

Image Quality This displays the image quality of the video stream.

Frame Rate This displays the frame rate of the video stream.

Status > Network



Status > Network

Network

Network Type This displays the type of network the camera is connected to.

IP Address This displays the IP address assigned to the camera.

Subnet Mask This displays the subnet mask assigned to the camera.

Gateway This displays the IP address of the gateway used by the camera.

Primary DNS This displays the IP address of the primary Domain Name Server used by the camera.

Secondary DNS This displays the IP address of the secondary Domain Name Server used by the camera.

Wireless



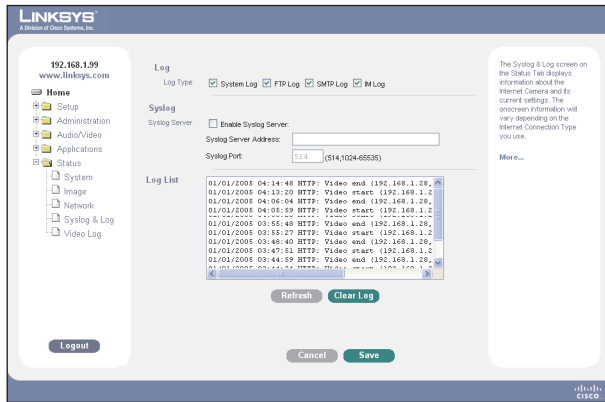
NOTE: Wireless information is only found on the WVC2300 camera.

SSID This displays the wireless network name (SSID) used by the camera.

Channel This displays the wireless channel used by the camera.

Security This indicates if wireless security is being used by the camera.

Status > Syslog & Log



Status > Syslog & Log

Log

Log Type Place a check mark next to the types of logs that you wish to view on the Log List.

- **System Log**
- **FTP Log**
- **SMTP Log**
- **IM Log**

Syslog

Enable Syslog Server Select this to enable the Syslog server.

Syslog Server Address Enter the IP address of your Syslog server.

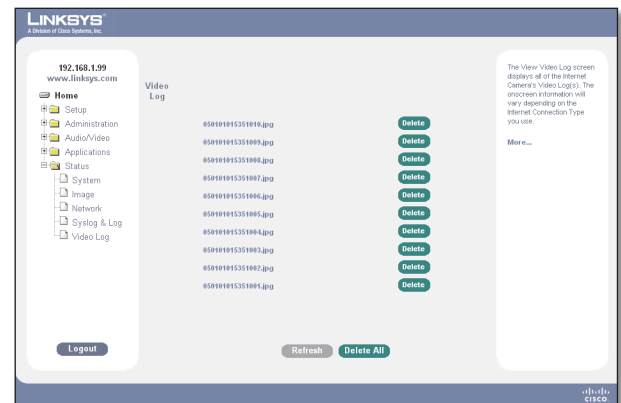
Syslog Port Enter the Syslog port number (between 1024 to 65535) in the field provided. The default Syslog port is **514**.

Log List

Refresh Click this button to reload all the entries in the System Log.

Clear Log Click this button to erase all the entries in the System Log.

Status > Video Log



View Video Log

Video Log

Refresh Click this button to reload all the entries in the video log.

Delete All Click this button to erase all the entries in the video log.

Appendix A: Troubleshooting

This appendix provides solutions to problems that may occur during the installation and operation of the Business Internet Video Camera. Read the questions and answers below to solve your problems:

I can't connect to the Camera with my web browser to configure it.

It is possible that your PC's IP address is not compatible with the IP address of the Camera. Use the Windows utility to configure the Camera with a valid IP address.

When I try to connect to the Camera, I get prompted for a user name and password.

You SHOULD be prompted for a user name and password when you first connect to the Camera. Enter the Administrator ID and Password set on the *Administration > Users* screen. The User Name/Password prompt indicates that the Administrator has restricted access to specified users. Ask the Administrator for your User Name and Password.

I can't connect to the Camera using a Wireless connection.



NOTE: Wireless connections are only supported on the WVC2300 camera.

If a LAN cable is connected to the LAN port, the Wireless interface is disabled. Only one interface can be active. Check that your PC and the Camera have compatible Wireless settings.

- Mode (Infrastructure or Ad-hoc) must be correct.
- The Camera's SSID must match the network SSID.
- Encryption settings must match.
- In Ad-hoc mode, the channel should match.

Video quality suddenly deteriorates.

This can happen when an additional viewer connects to the Camera, overloading the Camera or the available bandwidth. The image size and quality can be adjusted to cater to the required number of viewers and available bandwidth.

The motion detection feature doesn't send me any E-mails.

It may be that the SMTP (Simple Mail Transport Protocol) server used by the Camera to send the E-mail will not accept mail. This is to prevent Spam being sent from the server. Try using a different SMTP server, or contact your ISP to see if SMTP access is being blocked or if they do not allow SMTP relay (sending to another e-mail address).

Using the motion detection feature, I receive E-mails which don't show any moving objects.

The motion detection feature doesn't actually detect motion. It compares frames to see if they are different. Major differences between frames are assumed to be caused by moving objects. The motion detector can also be triggered by sudden changes in the level of available light or movement of the camera itself.

Try to avoid these situations. The motion detection feature works best in locations where there is good steady illumination, and the Camera is mounted securely.

The image is blurry.

Try the following options:

- Focus the lens.
- Check to make sure the lens is clean.
- Adjust the quality on the *Audio/Video > Video* screen. Video created with lower settings will contain less detail; this is the trade-off for using less bandwidth.



WEB: If your questions are not addressed here, refer to the Linksys website, www.linksys.com



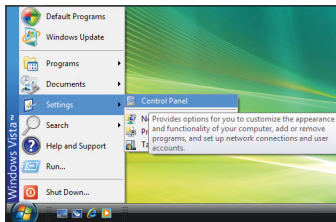
WINDOWS VISTA USERS: Review the section titled "Windows Vista Notes" in this User Guide for additional troubleshooting information.

Appendix B: Windows Vista Notes

Camera Application Blocked from Launching at Startup

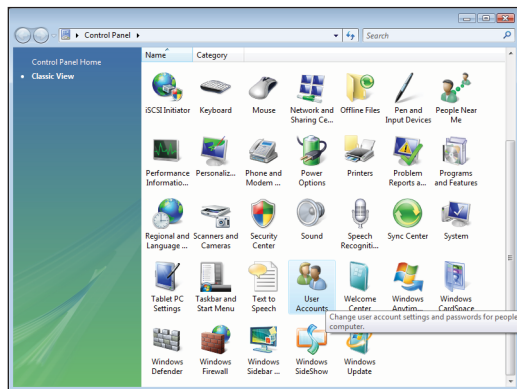
Windows Vista blocks the Camera application from launching at startup when using the default settings in Windows Vista. To allow the Camera application to launch at startup, it is necessary to disable UAC (User Account Control). To do this, perform the following steps:

1. Go to **Start > Settings** and click on **Control Panel**.



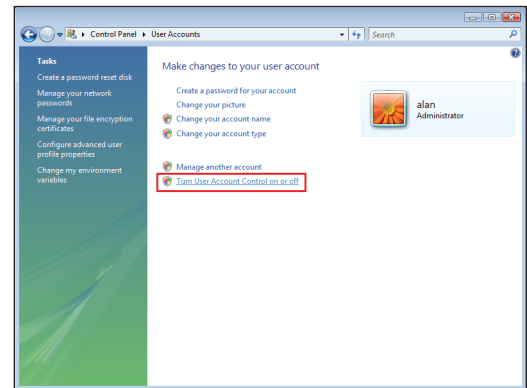
Start > Control Panel

2. Double-click on **User Accounts**.



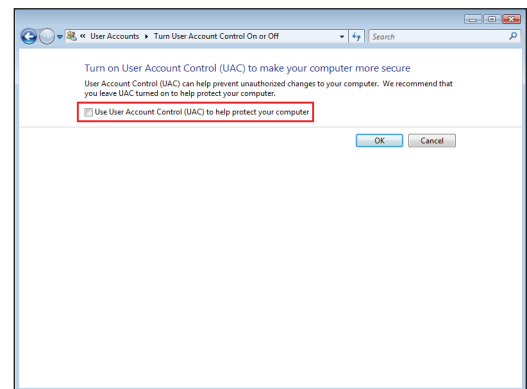
Control Panels

3. Double-click on **Turn User Account Control on or off**.



User Account Control Panel

4. Uncheck the option **Use User Account Control (UAC) to help protect your computer** and click **OK**.



User Account Control

Video Format Selection

When selecting the video format for use by the Camera, do not use ASF if using Windows Vista.

Appendix C: Bandwidth Usage

WVC2300 Bandwidth Test

Audio: ON

One User viewing video

Resolution	Quality	Frame Rate	Bandwidth (k/bps)	
			MPEG-4	MJPEG
640 x 480	Very High	30	2320	3040
		15	1840	2800
		6	880	1840
	Normal	30	2240	2800
		15	1680	2640
		6	640	1600
	Very Low	30	2160	2640
		15	1200	2400
		6	560	1200
320 x 240	Very High	30	1600	2000
		15	1200	1600
		6	600	800
	Normal	30	1440	1840
		15	800	1440
		6	360	640
	Very Low	30	760	1600
		15	480	1200
		6	200	480
160 x 128	Very High	30	1600	1440
		15	1120	800
		6	560	320
	Normal	30	560	1200
		15	320	640
		6	160	280
	Very Low	30	320	1040
		15	200	560
		6	120	240

Appendix D: Glossary

This glossary contains some basic networking terms you may come across when using this product.



WEB: For additional terms, please visit the glossary at www.linksys.com/glossary

Access Mode Specifies the method by which user access is granted to the system.

Access Point A device that allows wireless-equipped computers and other devices to communicate with a wired network. Also used to expand the range of a wireless network.

Access Profiles Allows network managers to define profiles and rules for accessing the device. Access to management functions can be limited to user groups, which are defined by the following criteria:

- Ingress interfaces
- Source IP address and/or Source IP subnets.

ACE Filters in Access Control Lists (ACL) that determine which network traffic is forwarded. An ACE is based on the following criteria:

- Protocol
- Protocol ID
- Source Port
- Destination Port
- Wildcard Mask
- Source IP Address
- Destination IP Address

ACL (Access Control List) Access Control Lists are used to grant, deny, or limit access devices, features, or applications.

Auto-negotiation Allows 10/100 Mbps or 10/100/1000 Mbps Ethernet ports to automatically establish the optimal duplex mode, flow control, and speed.

Back Pressure A mechanism used with Half Duplex mode that enables a port not to receive a message.

Bandwidth The transmission capacity of a given device or network.

Bandwidth Assignments Indicates the amount of bandwidth assigned to a specific application, user, and/or interface.

Baud Indicates the number of signaling elements transmitted each second.

Best Effort Indicates that traffic is assigned to the lowest priority queue, and packet delivery is not guaranteed.

Bit A binary digit.

Boot To start a device and cause it to start executing instructions.

Browser An application program that provides a way to look at and interact with all the information on the World Wide Web.

Bridge A device that connect two networks. Bridges are hardware specific, however they are protocol independent. Bridges operate at Layer 1 and Layer 2 levels.

Broadcast Domain Devices sets that receive broadcast frames originating from any device within a designated set. Routers bind Broadcast domains, because routers do not forward broadcast frames.

Broadcast Storm An excessive amount of broadcast messages simultaneously transmitted across a network by a single port. Forwarded message responses are heaped onto the network, overloading network resources or causing the network to time out.

Burst A packet transmission at faster than normal rates. Bursts are limited in time and only occur under specific conditions.

Burst Size Indicates the burst size transmitted at a faster than normal rate.

Byte A unit of data that is usually eight bits long

Cable Modem A device that connects a computer to the cable television network, which in turn connects to the Internet.

CBS (Committed Burst Size) Indicates the maximum number of data bits transmitted within a specific time interval.

CIR (Committed Information Rate) The data rate is averaged over a minimum time increment.

Class Maps An aspect of Quality of Service system that is comprised of an IP ACL and/or a MAC ACL. Class maps are configured to match packet criteria, and are matched to packets in a first-fit fashion.

Combo Ports A single logical port with two physical connections, including an RJ-45 connection and a SFP connection.

Communities Specifies a group of users which retain the same system access rights.

CoS (Class of Service) The 802.1p priority scheme. CoS provides a method for tagging packets with priority information. A CoS value between 0-7 is added to the Layer II header of packets, where zero is the lowest priority and seven is the highest.

DDNS (Dynamic Domain Name System) Allows the hosting of a website, FTP server, or e-mail server with a fixed domain name (e.g., www.xyz.com) and a dynamic IP address.

Default Gateway A device that forwards Internet traffic from your local area network.

DHCP (Dynamic Host Configuration Protocol) A networking protocol that allows administrators to assign temporary IP addresses to network computers by “leasing” an IP address to a user for a limited amount of time, instead of assigning permanent IP addresses.

DHCP Clients An Internet host using DHCP to obtain configuration parameters, such as a network address.

DHCP Server An Internet host that returns configuration parameters to DHCP clients.

DNS (Domain Name Server) The IP address of your ISP’s server, which translates the names of websites into IP addresses.

Domain A specific name for a network of computers.

Download To receive a file transmitted over a network.

DSL (Digital Subscriber Line) An always-on broadband connection over traditional phone lines.

DSCP (DiffServ Code Point) Provides a method of tagging IP packets with QoS priority information.

Dynamic IP Address A temporary IP address assigned by a DHCP server.

EIGRP (Enhanced Interior Gateway Routing Protocol) Provides fast convergence, support for variable-length subnet mask, and supports multiple network layer protocols.

Encryption Encoding data transmitted in a network.

Ethernet IEEE standard network protocol that specifies how data is placed on and retrieved from a common transmission medium.

Firmware The programming code that runs a networking device.

Flow Control Enables lower speed devices to communicate with higher speed devices. This is implemented by the higher speed device refraining from sending packets.

FTP (File Transfer Protocol) A protocol used to transfer files over a TCP/IP network.

Full Duplex The ability of a networking device to receive and transmit data simultaneously.

GARP (General Attributes Registration Protocol) Registers client stations into a multicast domain.

Gateway A device that interconnects networks with different, incompatible communications protocols.

GBIC (GigaBit Interface Converter) A hardware module used to attach network devices to fiber-based transmission systems. GBIC converts the serial electrical signals to serial optical signals and vice versa.

GVRP (GARP VLAN Registration Protocol) Registers client stations into a VLANs.

Half Duplex Data transmission that can occur in two directions over a single line, but only one direction at a time.

HTTP (HyperText Transport Protocol) The communications protocol used to connect to servers on the World Wide Web.

HTTPS (HyperText Transport Protocol Secure) An extension to the standard HTTP protocol that provides confidentiality by encrypting the traffic from the website. By default this protocol uses TCP port 443.

ICMP (Internet Control Message Protocol) Allows the gateway or destination host to communicate with the source host. For example, to report a processing error.

IGMP (Internet Group Management Protocol) Allows hosts to notify their local switch or router that they want to receive transmissions assigned to a specific multicast group.

IP (Internet Protocol) A protocol used to send data over a network.

IP Address The address used to identify a computer or device on a network.

IPCONFIG A Windows 2000 and XP utility that displays the IP address for a particular networking device.

IPSec (Internet Protocol Security) A VPN protocol used to implement secure exchange of packets at the IP layer.

ISP (Internet Service Provider) A company that provides access to the Internet.

Jumbo Frames Enable transporting identical data in fewer frames. Jumbo Frames reduce overhead, lower processing time, and ensure fewer interrupts.

LAG (Link Aggregated Group) Aggregates ports or VLANs into a single virtual port or VLAN.

LAN The computers and networking products that make up your local network.

MAC (Media Access Control) Address The unique address that a manufacturer assigns to each networking device.

Mask A filter that includes or excludes certain values, for example parts of an IP address.

Mbps (MegaBits Per Second) One million bits per second; a unit of measurement for data transmission.

MD5 (Message Digest 5) An algorithm that produces a 128-bit hash. MD5 is a variation of MD4, and increases MD4 security. MD5 verifies the integrity of the communication and authenticates the origin of the communication.

MDI (Media Dependent Interface) A cable used for end stations.

MDIX (Media Dependent Interface with Crossover) A cable used for hubs and switches.

MIB (Management Information Base) MIBs contain information describing specific aspects of network components.

Multicast Transmits copies of a single packet to multiple ports.

Network A series of computers or devices connected for the purpose of data sharing, storage, and/or transmission between users.

NMS (Network Management System) An interface that provides a method of managing a system.

OID (Object Identifier) Used by SNMP to identify managed objects. In the SNMP Manager/Agent network management paradigm, each managed object must have an OID to identify it.

Packet A unit of data sent over a network.

Ping (Packet Internet Groper) An Internet utility used to determine whether a particular IP address is online.

Policing Determines if traffic levels are within a specified profile. Policing manages the maximum traffic rate used to send or receive packets on an interface.

Port The connection point on a computer or networking device used for plugging in cables or adapters.

Port Mirroring Monitors and mirrors network traffic by forwarding copies of incoming and outgoing packets from one port to a monitoring port.

Power over Ethernet (PoE) A technology enabling an Ethernet network cable to deliver both data and power.

QoS (Quality of Service) Provides policies that contain sets of filters (rules). QoS allows network managers to decide how and what network traffic is forwarded according to priorities, application types, and source and destination addresses.

RADIUS (Remote Authentication Dial-In User Service) A protocol that uses an authentication server to control network access.

RJ-45 (Registered Jack-45) An Ethernet connector that holds up to eight wires.

RMON (Remote Monitoring) Provides network information to be collected from a single workstation.

Router A networking device that connects multiple networks together.

RSTP (Rapid Spanning Tree Protocol) Detects and uses network topologies that allow a faster convergence of the spanning tree, without creating forwarding loops.

Server Any computer whose function in a network is to provide user access to files, printing, communications, and other services.

SMTP (Simple Mail Transfer Protocol) The standard e-mail protocol on the Internet.

SNMP (Simple Network Management Protocol) A widely used network monitoring and control protocol.

SSH Secure Shell. A utility that uses strong authentication and secure communications to log in to another computer over a network.

SSL (Secure Socket Layer) Encryption technology for the Internet used to provide secure transactions, such as the transmission of credit card numbers for e-commerce.

Static IP Address A fixed address assigned to a computer or device that is connected to a network.

STP (Spanning Tree Protocol) Prevents loops in network traffic. The Spanning Tree Protocol (STP) provides tree topography for any arrangement of bridges. STP provides one path between end stations on a network, eliminating loops.

Subnet (Sub-network) Subnets are portions of a network that share a common address component. In TCP/IP networks, devices that share a prefix are part of the same subnet. For example, all devices with a prefix of 157.100.100.100 are part of the same subnet.

Subnet Mask An address code that determines the size of the network.

Switch Filters and forwards packets between LAN segments. Switches support any packet protocol type.

TACACS+ (Terminal Access Controller Access Control System Plus) Proprietary Cisco enhancement to Terminal Access Controller Access Control System (TACACS). Provides additional support for authentication, authorization, and accounting.

TCP (Transmission Control Protocol) A network protocol for transmitting data that requires acknowledgement from the recipient of data sent.

TCP/IP (Transmission Control Protocol/Internet Protocol) A set of instructions PCs use to communicate over a network.

Telnet A user command and TCP/IP protocol used for accessing remote PCs.

TFTP (Trivial File Transfer Protocol) A version of the TCP/IP FTP protocol that has no directory or password capability.

Throughput The amount of data moved successfully from one node to another in a given time period.

Trunking Link Aggregation. Optimizes port usage by linking a group of ports together to form a single trunk (aggregated groups).

TX Rate Transmission Rate.

UDP (User Data Protocol) Communication protocol that transmits packets but does not guarantee their delivery.

Upgrade To replace existing software or firmware with a newer version.

Upload To transmit a file over a network.

URL (Uniform Resource Locator) The address of a file located on the Internet.

VLAN (Virtual Local Area Networks) Logical subgroups that constitute a Local Area Network (LAN). This is done in software rather than defining a hardware solution.

WAN (Wide Area Network) Networks that cover a large geographical area.

Wildcard Mask Specifies which IP address bits are used, and which bits are ignored. A wild card mask of 255.255.255.255 indicates that no bit is important. A wildcard of 0.0.0.0 indicates that all the bits are important.

For example, if the destination IP address is 149.36.184.198 and the wildcard mask is 255.36.184.00, the first two bits of the IP address are used, while the last two bits are ignored.

Appendix E: Specifications

PVC2300 Specifications

Model	PVC2300
Standards	IEEE802.3, IEEE802.3u, IEEE802.1p (QoS Priority), IEEE802.1q (VLAN)
Protocols Supported	TCP/IP, HTTP, DHCP, SMTP, FTP, NTP, DNS, UPnP, RTP, RTSP and DDNS
Ports	Ethernet w/POE, Microphone IN, Speaker OUT, Power (12V, 1A), GPIO, 4-pin IRIS port
Buttons	Reset
Cabling Type	UTP CAT 5
LEDs	Power, Network
Camera Type	Box
IO ports	RS-485 x 1 (2 pins) - Supports Pelco "D" protocol commands Input control x 2 (2 pins) Output control x 2 (2 pins)

Lens

Sensor	1/4" Progressive CCD Sensor
Illumination	1.4LUX@F1.4 .4 Normal Night Mode in black and white
Lens type	CS Mount lens, fixed focus; Adapter also included for lenses that require more distance between sensor and lens
Focal Length	500mm~Infinity (for included lens)
Field of View	60° (for included lens)
Video Resolution	640x480 (VGA), 320x240 (QVGA), 160x120 (QQVGA)
Frame Rate	1 to 30 fps (selectable)
Iris	Provides Iris control for CS-mount auto-iris lens when attached

Setup/Config

WebUI	Built in Web UI for Easy Browser-Based Configuration (HTTP)
-------	---

Management

Web Browser	Internet Explorer 5.x or Above; Netscape, Firefox
Event Logging	Event Logging (SYSLOG)
Web F/W upgrade	Firmware Upgradable Through Web-Browser

Video Compression

Dual Codec	MPEG-4 Simple Profile MJPEG Simultaneous dual-stream
Snapshot	JPEG
Image Settings	Brightness and Contrast
Zoom	4x Digital Zoom
Night Vision	IR filter switcher for low light
Video Controls	Auto-White-Balance(AWB), Auto-Exposure(AES)
Image Control	Select video by Quality, Bandwidth, and Frame Rate
Format	3GPP for use with 3G phones

Alerts

Motion Detection	4 Detection areas with individual sensitivity
Email Alert	3 e-mail addresses
FTP uploading	FTP server address and login settings
Instant Messaging	Jabber client support
Scheduled	Schedule by day or time
Triggers	Inputs 1, Input 2, Motion Detection
Actions	Outputs 1, Output 2, Messaging, E-mail, FTP

Audio

Summary	2-Way Audio
Built-in Microphone	6mm, -40db + 3db
Microphone input	3.5 mm Phone jack
Speaker output	3.5 mm Phone jack
Compression	G.726 - 16K, G.711 A-law and μ-law
Sampling Rate	8 KHz
Default Bit Rate	16 Kbps

Management Utility

Monitoring and Recording software	Monitoring and Recording for up to 16 cameras Advanced search histogram or by time and date Recording set up to record by motion trigger, manual or schedule recording and playback
-----------------------------------	---

Security

User List	User Rights List to View Video and/or to Camera Control Functions
Username/password	Logon authentication 20 character username and 8 character password
Kensington lock	Physical security option

Network

RTP/RTSP	Real-Time Protocol, Real-Time Streaming Protocol allow for viewing from any client supporting these protocols, like 3G phones or Quicktime client
NTP	Network Time Protocol keeps time of camera in sync with your network
SMTP	Simple Mail Transfer Protocol Client allows video clips to be e-mailed
FTP Client	FTP Client facilitates scheduling transfer of images to an FTP server
DDNS	Dynamic DNS facilitates reaching the camera by a name irrespective of camera's IP address. Supports DynDNS, TZO, and 3322 Dynamic DNS services
UPnP	Allows autodiscovery of the camera by other UPnP devices
IP Filtering	Allow or disallow access by IP address

Power

Power Options	IEEE 802.3af Power over Ethernet (PoE) - 48V/0.3A External Power Adapter: 12V/1A, 110~120V AC/60Hz, Switching
Power Consumption	10W

Environmental

Dimensions W x H x D	4.72" x 2.99" x 1.81" (120 x 76 x 46 mm)
Unit Weight	1.15 lb (0.52 kg)
Power	External power adapter 12 VDC 1A 110~120VAC/60Hz switching or POE 48V/0.3A
Certification	FCC part 15C class B, CE, UL, EMC/EMI part 15B class B for US
Operating Temp.	32 to 122°F (0 to 50°C)
Storage Temp.	-4 to 158°F (-20 to 70°C)
Operating Humidity	10% - 80%
Storage Humidity	0% - 90%

WVC2300 Specifications

Model	WVC2300
Standards	IEEE802.11g, IEEE802.11b, IEEE802.3, IEEE802.3u, IEEE802.1p (QoS Priority), IEEE802.1q (VLAN), 802.11e (Wireless QoS)
Protocols Supported	TCP/IP, HTTP, DHCP, SMTP, FTP, NTP, DNS, UPnP, RTP, RTSP and DDNS
Ports	Ethernet, Microphone IN, Speaker OUT, Power (12V, 1A), GPIO, 4-pin IRIS port
Buttons	Reset
Cabling Type	UTP CAT 5
LEDs	Power, Network
Camera Type	Box
IO ports	RS-485 x 1 (2 pins) - Supports Pelco "D" protocol commands Input control x 2 (2 pins) Output control x 2 (2 pins)

Lens

Sensor	1/4" Progressive CCD Sensor
Illumination	1.4LUX@F1.4 .4 Normal Night Mode in black and white
Lens type	CS Mount lens, fixed focus; Adapter also included for lenses that require more distance between sensor and lens
Focal Length	500mm~Infinity (for included lens)
Field of View	60° (for included lens)
Video Resolution	640x480 (VGA), 320x240 (QVGA), 160x120 (QQVGA)
Frame Rate	1 to 30 fps (selectable)
Iris	Provides Iris control for CS-mount auto-iris lens when attached

Setup/Config

WebUI	Built in Web UI for Easy Browser-Based Configuration (HTTP)
-------	---

Management

Web Browser	Internet Explorer 5.x or Above; Netscape, Firefox
-------------	---

Event Logging	Event Logging (SYSLOG)
Web F/W upgrade	Firmware Upgradable Through Web-Browser

Video Compression

Dual Codec	MPEG-4 Simple Profile MJPEG Simultaneous dual-stream
Snapshot	JPEG
Image Settings	Brightness and Contrast
Zoom	4x Digital Zoom
Night Vision	IR Cut filter for low light
Video Controls	Auto-White-Balance(AWB), Auto-Exposure(AES)
Image Control	Select video by Quality, Bandwidth, and Frame Rate
Format	3GPP for use with 3G phones

Alerts

Motion Detection	4 Detection areas with individual sensitivity
Email Alert	3 e-mail addresses
FTP uploading	FTP server address and login settings
Instant Messaging	Jabber client support
Scheduled Triggers	Schedule by day or time Inputs 1, Input 2, Motion Detection
Actions	Outputs 1, Output 2, Messaging, Email, FTP

Audio

Summary	2-Way Audio
Built-in Microphone	6mm, -40db + 3db
Microphone input	3.5 mm Phone jack
Speaker output	3.5 mm Phone jack
Compression	G.726 - 16K, G.711 A-law and μ-law
Sampling Rate	8 KHz
Default Bit Rate	16 Kbps

Management Utility

Monitoring and Recording software	Monitoring and Recording for up to 16 cameras Advanced search histogram or by time and date Recording set up to record by motion trigger, manual or schedule recording and playback
-----------------------------------	---

Security

WEP/WPA	WEP 64bit/128bit, WPA-TKIP, WPA-PSK
User List	User Rights List to View Video and/or to Camera Control Functions
Username/password	Logon authentication 20 character username and 8 character password
Kensington lock	Physical security option

Network

RTP/RTSP	Real-Time Protocol, Real-Time Streaming Protocol allow for viewing from any client supporting these protocols, like 3G phones or Quicktime client
NTP	Network Time Protocol keeps time of camera in sync with your network
SMTP	Simple Mail Transfer Protocol Client allows video clips to be e-mailed
FTP Client	FTP Client facilitates scheduling transfer of images to an FTP server
DDNS	Dynamic DNS facilitates reaching the camera by a name irrespective of camera's IP address. Supports DynDNS, TZO, and 3322 Dynamic DNS services
UPnP	Allows autodiscovery of the camera by other UPnP devices
IP Filtering	Allow or disallow access by IP address

Power

Power Options	External Power Adapter: 12V/1A, 110~120V AC/60Hz, Switching
Power Consumption	10W

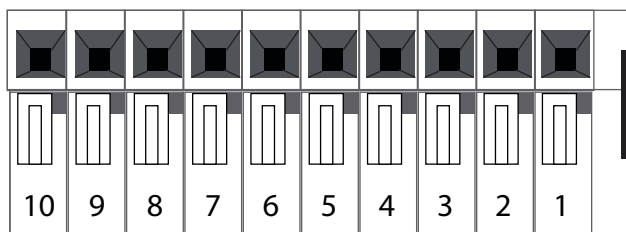
Power

Power Options	IEEE 802.3af Power over Ethernet (PoE) - 48V/0.3A External Power Adapter: 12V/1A, 110~120V AC/60Hz, Switching
Power Consumption	10W

Environmental

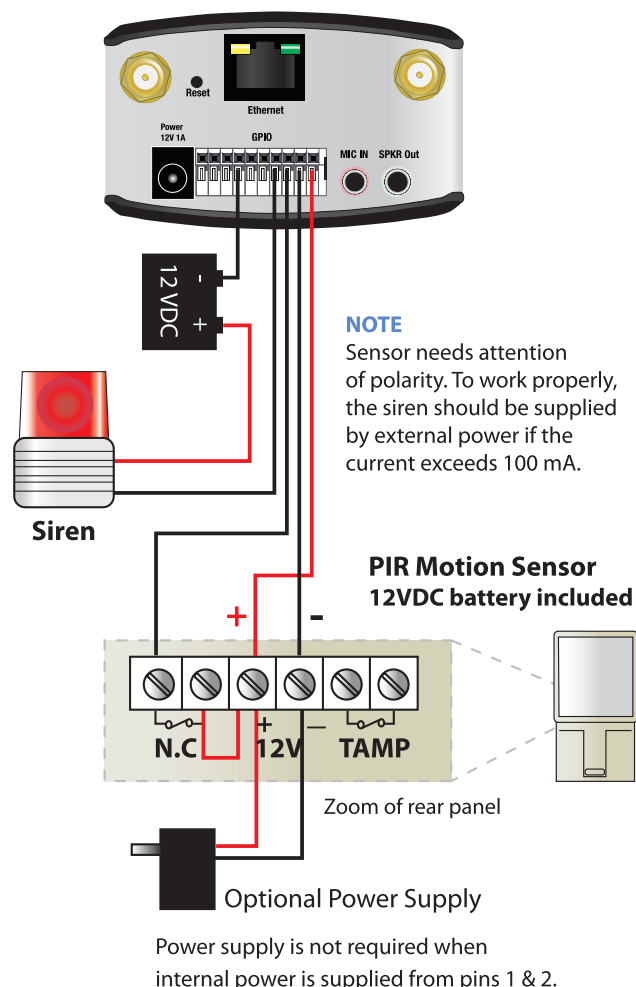
Dimensions W x H x D	4.72" x 2.99" x 1.81" (120 x 76 x 46 mm)
Unit Weight	1.15 lb (0.52 kg)
Power	External power adapter 12 VDC 1A 110~120VAC/60Hz switching
Certification	FCC part 15C class B, CE, UL, EMC/EMI part 15B class B for US
Operating Temp.	32 to 122°F (0 to 50°C)
Storage Temp.	-4 to 158°F (-20 to 70°C)
Operating Humidity	10% - 80%
Storage Humidity	0% - 90%

I/O Port Specifications



I/O PIN Specifications

PIN	Function	Description
1	12VDC Output	With a maximum load of 100mA, this output to be used with an external device.
2	GND	
3	Digital Input 1	Connect to high to activate (5V-12V)
4	Digital Output 1	With a maximum load of 100mA and maximum voltage of 12VDC, this output has an open-collector NPN transistor with the emitter connected to GND.
5	Digital Input 2	Connect to high to activate (5V-12V)
6	Digital Output 2	With a maximum load of 100mA and maximum voltage of 12VDC, this output has an open-collector NPN transistor with the emitter connected to GND.
7	GND	
8	12VDC Output	With a maximum load of 100mA, this output to be used with an external device.
9	RS485-B (Inverting)	A-half duplex RS485 inteface for controlling auxiliary equipment
10	RS485-A (non-Inverting)	



NOTE: The icons below can manually turn on or off the output ports from the web-based utility's home page.



On This icon will turn on the selected output.



Off This icon turns off the selected output.

Appendix F: Warranty Information

Limited Warranty

Linksys warrants to You that, for a period of one year (the "Warranty Period"), your Linksys Product will be substantially free of defects in materials and workmanship under normal use. Your exclusive remedy and Linksys' entire liability under this warranty will be for Linksys at its option to repair or replace the Product or refund Your purchase price less any rebates. This limited warranty extends only to the original purchaser.

If the Product proves defective during the Warranty Period call Linksys Technical Support in order to obtain a Return Authorization Number, if applicable. BE SURE TO HAVE YOUR PROOF OF PURCHASE ON HAND WHEN CALLING. If You are requested to return the Product, mark the Return Authorization Number clearly on the outside of the package and include a copy of your original proof of purchase. RETURN REQUESTS CANNOT BE PROCESSED WITHOUT PROOF OF PURCHASE. You are responsible for shipping defective Products to Linksys. Linksys pays for UPS Ground shipping from Linksys back to You only. Customers located outside of the United States of America and Canada are responsible for all shipping and handling charges.

ALL IMPLIED WARRANTIES AND CONDITIONS OF MERCHANTABILITY OR FITNESS FOR A PARTICULAR PURPOSE ARE LIMITED TO THE DURATION OF THE WARRANTY PERIOD. ALL OTHER EXPRESS OR IMPLIED CONDITIONS, REPRESENTATIONS AND WARRANTIES, INCLUDING ANY IMPLIED WARRANTY OF NON-INFRINGEMENT, ARE DISCLAIMED. Some jurisdictions do not allow limitations on how long an implied warranty lasts, so the above limitation may not apply to You. This warranty gives You specific legal rights, and You may also have other rights which vary by jurisdiction.

This warranty does not apply if the Product (a) has been altered, except by Linksys, (b) has not been installed, operated, repaired, or maintained in accordance with instructions supplied by Linksys, or (c) has been subjected to abnormal physical or electrical stress, misuse, negligence, or accident. In addition, due to the continual development of new techniques for intruding upon and attacking networks, Linksys does not warrant that the Product will be free of vulnerability to intrusion or attack.

TO THE EXTENT NOT PROHIBITED BY LAW, IN NO EVENT WILL LINKSYS BE LIABLE FOR ANY LOST DATA, REVENUE OR PROFIT, OR FOR SPECIAL, INDIRECT, CONSEQUENTIAL, INCIDENTAL OR PUNITIVE DAMAGES, REGARDLESS OF THE THEORY OF LIABILITY (INCLUDING NEGLIGENCE), ARISING OUT OF OR RELATED TO THE USE OF OR INABILITY TO USE THE PRODUCT (INCLUDING ANY SOFTWARE), EVEN IF LINKSYS HAS BEEN ADVISED OF THE POSSIBILITY OF SUCH DAMAGES. IN NO EVENT WILL LINKSYS' LIABILITY EXCEED THE AMOUNT PAID BY YOU FOR THE PRODUCT. The foregoing limitations will apply even if any warranty or remedy provided under this Agreement fails of its essential purpose. Some jurisdictions do not allow the exclusion or limitation of incidental or consequential damages, so the above limitation or exclusion may not apply to You.

Please direct all inquiries to: Linksys, P.O. Box 18558, Irvine, CA 92623.

Appendix G: Wired Product Regulatory Information

FCC Statement

This product has been tested and complies with the specifications for a Class B digital device, pursuant to Part 15 of the FCC Rules. These limits are designed to provide reasonable protection against harmful interference in a residential installation. This equipment generates, uses, and can radiate radio frequency energy and, if not installed and used according to the instructions, may cause harmful interference to radio communications. However, there is no guarantee that interference will not occur in a particular installation. If this equipment does cause harmful interference to radio or television reception, which is found by turning the equipment off and on, the user is encouraged to try to correct the interference by one or more of the following measures:

- Reorient or relocate the receiving antenna
- Increase the separation between the equipment or devices
- Connect the equipment to an outlet other than the receiver's
- Consult a dealer or an experienced radio/TV technician for assistance

Safety Notices

- Caution: To reduce the risk of fire, use only No.26 AWG or larger telecommunication line cord.
- Do not use this product near water, for example, in a wet basement or near a swimming pool.
- Avoid using this product during an electrical storm. There may be a remote risk of electric shock from lightning.



WARNING: This product contains lead, known to the State of California to cause cancer, and birth defects or other reproductive harm. Wash hands after handling.

Industry Canada Statement

This device complies with Industry Canada ICES-003 rule.

Operation is subject to the following two conditions:

1. This device may not cause interference and
2. This device must accept any interference, including interference that may cause undesired operation of the device.

Avis d'Industrie Canada

Cet appareil est conforme à la norme NMB003 d'Industrie Canada.

Le fonctionnement est soumis aux conditions suivantes :


1. Ce périphérique ne doit pas causer d'interférences;
2. Ce périphérique doit accepter toutes les interférences reçues, y compris celles qui risquent d'entraîner un fonctionnement indésirable.

User Information for Consumer Products Covered by EU Directive 2002/96/EC on Waste Electric and Electronic Equipment (WEEE)


This document contains important information for users with regards to the proper disposal and recycling of Linksys products. Consumers are required to comply with this notice for all electronic products bearing the following symbol:




English - Environmental Information for Customers in the European Union

European Directive 2002/96/EC requires that the equipment bearing this symbol  on the product and/or its packaging must not be disposed of with unsorted municipal waste. The symbol indicates that this product should be disposed of separately from regular household waste streams. It is your responsibility to dispose of this and other electric and electronic equipment via designated collection facilities appointed by the government or local authorities. Correct disposal and recycling will help prevent potential negative consequences to the environment and human health. For more detailed information about the disposal of your old equipment, please contact your local authorities, waste disposal service, or the shop where you purchased the product.


Български (Bulgarian) - Информация относно опазването на околната среда за потребители в Европейския съюз

Европейска директива 2002/96/ЕС изисква уредите, носещи този символ  върху изделието и/или опаковката му, да не се изхвърлят с несортирани битови отпадъци. Символът обозначава, че изделието трябва да се изхвърля отделно от сметосъбирането на обикновените битови отпадъци. Ваша е отговорността този и другите електрически и електронни уреди да се изхвърлят в предварително определени от държавните или общински органи специализирани пунктове за събиране. Правилното изхвърляне и рециклиране ще спомогнат да се предотвратят евентуални вредни за околната среда и здравето на населението последствия. За по-подробна информация относно изхвърлянето на вашите стари уреди се обърнете към местните власти, службите за сметосъбиране или магазина, от който сте закупили уреда.


Čeština (Czech) - Informace o ochraně životního prostředí pro zákazníky v zemích Evropské unie

Evropská směrnice 2002/96/ES zakazuje, aby zařízení označené tímto symbolem  na produktu anebo na obalu bylo likvidováno s netříděným komunálním odpadem. Tento symbol udává, že daný produkt musí být likvidován odděleně od běžného komunálního odpadu. Odpovídáte za likvidaci tohoto produktu a dalších elektrických a elektronických zařízení prostřednictvím určených sběrných míst stanovených vládou nebo místními úřady. Správná likvidace a recyklace pomáhá předcházet potenciálním negativním dopadům na životní prostředí a lidské zdraví. Podrobnější informace o likvidaci starého vybavení si laskavě vyžádejte od místních úřadů, podniku zabývajícího se likvidací komunálních odpadů nebo obchodu, kde jste produkt zakoupili.


Dansk (Danish) - Miljøinformation for kunder i EU

EU-direktiv 2002/96/EF kræver, at udstyr der bærer dette symbol  på produktet og/eller emballagen ikke må bortskaffes som usorteret kommunalt affald. Symbolet betyder, at dette produkt skal bortskaffes adskilt fra det almindelige husholdningsaffald. Det er dit ansvar at bortskaffe dette og andet elektrisk og elektronisk udstyr via bestemte indsamlingssteder udpeget af staten eller de lokale myndigheder. Korrekt bortskaffelse og genvinding vil hjælpe med til at undgå mulige skader for miljøet og menneskers sundhed. Kontakt venligst de lokale myndigheder, renovationstjenesten eller den butik, hvor du har købt produktet, angående mere detaljeret information om bortskaffelse af dit gamle udstyr.


Deutsch (German) - Umweltinformation für Kunden innerhalb der Europäischen Union

Die Europäische Richtlinie 2002/96/EC verlangt, dass technische Ausrüstung, die direkt am Gerät und/oder an der Verpackung mit diesem Symbol versehen ist , nicht zusammen mit unsortiertem Gemeindeabfall entsorgt werden darf. Das Symbol weist darauf hin, dass das Produkt von regulärem Haushaltsmüll getrennt entsorgt werden sollte. Es liegt in Ihrer Verantwortung, dieses Gerät und andere elektrische und elektronische Geräte über die dafür zuständigen und von der Regierung oder örtlichen Behörden dazu bestimmten Sammelstellen zu entsorgen. Ordnungsgemäßes Entsorgen und Recyceln trägt dazu bei, potentielle negative Folgen für Umwelt und die menschliche Gesundheit zu vermeiden. Wenn Sie weitere Informationen zur Entsorgung Ihrer Altgeräte benötigen, wenden Sie sich bitte an die örtlichen Behörden oder städtischen Entsorgungsdienste oder an den Händler, bei dem Sie das Produkt erworben haben.


Eesti (Estonian) - Keskkonnaalane informatsioon Euroopa Liidus asuvatele klientidele

Euroopa Liidu direktiivi 2002/96/EÜ nõuete kohaselt on seadmeid, millel on tootel või pakendil käesolev sümbol , keelatud kõrvaldada koos sorteerimata olmejäätmetega. See sümbol näitab, et toode tuleks kõrvaldada eraldi tavalistest olmejäätmevoogudest. Olete kohustatud kõrvaldama käesoleva ja ka muud elektri- ja elektroonikaseadmed riigi või kohalike ametiasutuste poolt ette nähtud kogumispunktide kaudu. Seadmete korrektne kõrvaldamine ja ringlussevõtt aitab vältida võimalikke negatiivseid tagajärgi keskkonnale ning inimeste tervisele. Vanade seadmete kõrvaldamise kohta täpsema informatsiooni saamiseks võtke palun ühendust kohalike ametiasutustega, jäätmekäitlusfirmaga või kauplusega, kust te toote ostsite.


Español (Spanish) - Información medioambiental para clientes de la Unión Europea

La Directiva 2002/96/CE de la UE exige que los equipos que lleven este símbolo , en el propio aparato y/o en su embalaje no deben eliminarse junto con otros residuos urbanos no seleccionados. El símbolo indica que el producto en cuestión debe separarse de los residuos domésticos convencionales con vistas a su eliminación. Es responsabilidad suya desechar este y cualesquiera otros aparatos eléctricos y electrónicos a través de los puntos de recogida que ponen a su disposición el gobierno y las autoridades locales. Al desechar y reciclar correctamente estos aparatos estará contribuyendo a evitar posibles consecuencias negativas para el medio ambiente y la salud de las personas. Si desea obtener información más detallada sobre la eliminación segura de su aparato usado, consulte a las autoridades locales, al servicio de recogida y eliminación de residuos de su zona o pregunte en la tienda donde adquirió el producto.


Ελληνικά (Greek) - Στοιχεία περιβαλλοντικής προστασίας για πελάτες εντός της Ευρωπαϊκής Ένωσης

Η Κοινοτική Οδηγία 2002/96/ΕΚ απαιτεί ότι ο εξοπλισμός ο οποίος φέρει αυτό το σύμβολο , στο προϊόν και/ή στη συσκευασία του δεν πρέπει να απορρίπτεται μαζί με τα μικτά κοινотικά απορρίμματα. Το σύμβολο υποδεικνύει ότι αυτό το προϊόν θα πρέπει να απορρίπτεται ξεχωριστά από τα συνήθη οικιακά απορρίμματα. Είστε υπεύθυνος για την απόρριψη του παρόντος και άλλου ηλεκτρικού και ηλεκτρονικού εξοπλισμού μέσω των καθορισμένων εγκαταστάσεων συγκέντρωσης απορριμμάτων οι οποίες παρέχονται από το κράτος ή τις αρμόδιες τοπικές αρχές. Η σωστή απόρριψη και ανακύκλωση συμβάλλει στην πρόληψη πιθανών αρνητικών συνεπειών για το περιβάλλον και την υγεία. Για περισσότερες πληροφορίες σχετικά με την απόρριψη του παλιού σας εξοπλισμού, παρακαλώ επικοινωνήστε με τις τοπικές αρχές, τις υπηρεσίες απόρριψης ή το κατάστημα από το οποίο αγοράσατε το προϊόν.


Français (French) - Informations environnementales pour les clients de l'Union européenne

La directive européenne 2002/96/CE exige que l'équipement sur lequel est apposé ce symbole , sur le produit et/ou son emballage ne soit pas jeté avec les autres ordures ménagères. Ce symbole indique que le produit doit être éliminé dans un circuit distinct de celui pour les déchets des ménages. Il est de votre responsabilité de jeter ce matériel ainsi que tout autre matériel électrique ou électronique par les moyens de collecte indiqués par le gouvernement et les pouvoirs publics des collectivités territoriales. L'élimination et le recyclage en bonne et due forme ont pour but de lutter contre l'impact néfaste potentiel de ce type de produits sur l'environnement et la santé publique. Pour plus d'informations sur le mode d'élimination de votre ancien équipement, veuillez prendre contact avec les pouvoirs publics locaux, le service de traitement des déchets, ou l'endroit où vous avez acheté le produit.


Italiano (Italian) - Informazioni relative all'ambiente per i clienti residenti nell'Unione Europea

La direttiva europea 2002/96/EC richiede che le apparecchiature contrassegnate con questo simbolo , sul prodotto e/o sull'imballaggio non siano smaltite insieme ai rifiuti urbani non differenziati. Il simbolo indica che questo prodotto non deve essere smaltito insieme ai normali rifiuti domestici. È responsabilità del proprietario smaltire sia questi prodotti sia le altre apparecchiature elettriche ed elettroniche mediante le specifiche strutture di raccolta indicate dal governo o dagli enti pubblici locali. Il corretto smaltimento ed il riciclaggio aiuteranno a prevenire conseguenze potenzialmente negative per l'ambiente e per la salute dell'essere umano. Per ricevere informazioni più dettagliate circa lo smaltimento delle vecchie apparecchiature in Vostro possesso, Vi invitiamo a contattare gli enti pubblici di competenza, il servizio di smaltimento rifiuti o il negozio nel quale avete acquistato il prodotto.

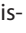
Latviešu valoda (Latvian) - Ekoloģiska informācija klientiem Eiropas Savienības jurisdikcijā

Direktīvā 2002/96/EK ir prasība, ka aprīkojumu, kam pievienota zīme , uz paša izstrādājuma vai uz tā iesaiņojuma, nedrīkst izmest nešķīrotā veidā kopā ar komunālajiem atkritumiem (tiem, ko rada vietēji iedzīvotāji un uzņēmumi). Šī zīme nozīmē to, ka šī ierīce ir jāizmet atkritumos tā, lai tā nenonāktu kopā ar parastiem mājaimniecības atkritumiem. Jūsu pienākums ir šo un citas elektriskās un elektroniskās ierīces izmest atkritumos, izmantojot īpašus atkritumu savākšanas veidus un līdzekļus, ko nodrošina valsts un pašvaldību iestādes. Ja izmešana atkritumos un pārstrāde tiek veikta pareizi, tad mazinās iespējamais kaitējums dabai un cilvēku veselībai. Sīkākas ziņas par novecojuša aprīkojuma izmešanu atkritumos jūs varat saņemt vietējā pašvaldībā, atkritumu savākšanas dienestā, kā arī veikalā, kur iegādājāties šo izstrādājumu.


Lietuvškai (Lithuanian) - Aplinkosaugos informacija, skirta Europos Sąjungos vartotojams

Europos direktyva 2002/96/EC numato, kad įrangos, kuri ir  kurios pakuotė yra pažymėta šiuo simboliu (įveskite simbolį), negalima šalinti kartu su nerūšiuotomis komunalinėmis atliekomis. Šis simbolis rodo, kad gaminį reikia šalinti atskirai nuo bendro buitinių atliekų srauto. Jūs privalote užtikrinti, kad ši ir kita elektros ar elektroninė įranga būtų šalinama per tam tikras nacionalinės ar vietinės valdžios nustatytas atliekų rinkimo sistemas. Tinkamai šalinant ir perdirbant atliekas, bus išvengta galimos žalos aplinkai ir žmonių sveikatai. Daugiau informacijos apie jūsų senos įrangos šalinimą gali pateikti vietinės valdžios institucijos, atliekų šalinimo tarnybos arba parduotuvės, kuriose įsigijote tą gaminį.


Malti (Maltese) - Informazzjoni Ambjentali għal Klijenti fl-Unjoni Ewropea

Id-Direttiva Ewropea 2002/96/KE titlob li t-tagħmir li jkun fih is-simbolu  fuq il-prodott u/jew fuq l-ippakkjar ma jistax jintrema ma' skart muniċipali li ma għex isseparat. Is-simbolu jindika li dan il-prodott għandu jintrema separatament minn ma' l-iskart domestiku regolari. Hija responsabbiltà tiegħek li tarmi dan it-tagħmir u kull tagħmir ieħor ta' l-elettriku u elettroniku permezz ta' faċilitajiet ta' għbir appuntati apposta mill-gvern jew mill-awtoritajiet lokali. Ir-rimi b'mod korrett u r-riċiklaġġ għin jipprevjeni konsegwenzi negattivi potenzjali għall-ambjent u għas-saħħa tal-bniedem. Għal aktar informazzjoni dettaljata dwar ir-rimi tat-tagħmir antik tiegħek, jekk jogħġbok ikkuntattja lill-awtoritajiet lokali tiegħek, is-servizzi għar-rimi ta' l-iskart, jew il-ħanut minn fejn xtrajt il-prodott.


Magyar (Hungarian) - Környezetvédelmi információ az európai uniós vásárlók számára

A 2002/96/EC számú európai uniós irányelv megkívánja, hogy azokat a termékeket, amelyeken, és/vagy amelyek csomagolásán az alábbi címke  megjelenik, tilos a többi szelektálatlan lakossági hulladékkal együtt kidobni. A címke azt jelöli, hogy az adott termék kidobásakor a szokványos háztartási hulladékszállítás rendszerektől elkülönített eljárást kell alkalmazni. Az Ön felelőssége, hogy ezt, és más elektromos és elektronikus berendezéseit a kormányzati vagy a helyi hatóságok által kijelölt gyűjtőrendszereken keresztül számolja fel. A megfelelő hulladékfeldolgozás segít a környezetre és az emberi egészségre potenciálisan ártalmas negatív hatások megelőzésében. Ha elavult berendezéseinek felszámolásához további részletes információra van szüksége, kérjük, lépjen kapcsolatba a helyi hatóságokkal, a hulladékfeldolgozási szolgálattal, vagy azzal üzlettel, ahol a terméket vásárolta.


Nederlands (Dutch) - Milieu-informatie voor klanten in de Europese Unie

De Europese Richtlijn 2002/96/EC schrijft voor dat apparatuur die is voorzien van dit symbool  op het product of de verpakking, niet mag worden ingezameld met niet-gescheiden huishoudelijk afval. Dit symbool geeft aan dat het product apart moet worden ingezameld. U bent zelf verantwoordelijk voor de vernietiging van deze en andere elektrische en elektronische apparatuur via de daarvoor door de landelijke of plaatselijke overheid aangewezen inzamelingskanalen. De juiste vernietiging en recycling van deze apparatuur voorkomt mogelijke negatieve gevolgen voor het milieu en de gezondheid. Voor meer informatie over het vernietigen van uw oude apparatuur neemt u contact op met de plaatselijke autoriteiten of afvalverwerkdienst, of met de winkel waar u het product hebt aangeschaft.

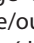
Norsk (Norwegian) - Miljøinformasjon for kunder i EU

EU-direktiv 2002/96/EF krever at utstyr med følgende symbol  avbildet på produktet og/eller pakningen, ikke må kastes sammen med usortert avfall. Symbolet indikerer at dette produktet skal håndteres atskilt fra ordinær avfallsinnsamling for husholdningsavfall. Det er ditt ansvar å kvitte deg med dette produktet og annet elektrisk og elektronisk avfall via egne innsamlingsordninger slik myndighetene eller kommunene bestemmer. Korrekt avfallshåndtering og gjenvinning vil være med på å forhindre mulige negative konsekvenser for miljø og helse. For nærmere informasjon om håndtering av det kasserte utstyret ditt, kan du ta kontakt med kommunen, en innsamlingsstasjon for avfall eller butikken der du kjøpte produktet.

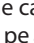
Polski (Polish) - Informacja dla klientów w Unii Europejskiej o przepisach dotyczących ochrony środowiska

Dyrektywa Europejska 2002/96/EC wymaga, aby sprzęt oznaczony symbolem  znajdującym się na produkcie i/lub jego opakowaniu nie był wyrzucany razem z innymi niesortowanymi odpadami komunalnymi. Symbol ten wskazuje, że produkt nie powinien być usuwany razem ze zwykłymi odpadami z gospodarstw domowych. Na Państwu spoczywa obowiązek wyrzucania tego i innych urządzeń elektrycznych oraz elektronicznych w punktach odbioru wyznaczonych przez władze krajowe lub lokalne. Pozbywanie się sprzętu we właściwy sposób i jego recykling pomogą zapobiec potencjalnie negatywnym konsekwencjom dla środowiska i zdrowia ludzkiego. W celu uzyskania szczegółowych informacji o usuwaniu starego sprzętu, prosimy zwrócić się do lokalnych władz, służb oczyszczania miasta lub sklepu, w którym produkt został nabyty.

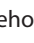
Português (Portuguese) - Informação ambiental para clientes da União Europeia

A Directiva Europeia 2002/96/CE exige que o equipamento que exibe este símbolo  no produto e/ou na sua embalagem não seja eliminado junto com os resíduos municipais não separados. O símbolo indica que este produto deve ser eliminado separadamente dos resíduos domésticos regulares. É da sua responsabilidade eliminar este e qualquer outro equipamento eléctrico e electrónico através das instalações de recolha designadas pelas autoridades governamentais ou locais. A eliminação e reciclagem correctas ajudarão a prevenir as consequências negativas para o ambiente e para a saúde humana. Para obter informações mais detalhadas sobre a forma de eliminar o seu equipamento antigo, contacte as autoridades locais, os serviços de eliminação de resíduos ou o estabelecimento comercial onde adquiriu o produto.


Română (Romanian) - Informații de mediu pentru clienții din Uniunea Europeană

Directiva europeană 2002/96/CE impune ca echipamentele care prezintă acest simbol  pe produs și/sau pe ambalajul acestuia să nu fie casate împreună cu gunoiul menajer municipal. Simbolul indică faptul că acest produs trebuie să fie casat separat de gunoiul menajer obișnuit. Este responsabilitatea dvs. să cașati acest produs și alte echipamente electrice și electronice prin intermediul unităților de colectare special desemnate de guvern sau de autoritățile locale. Casarea și reciclarea corecte vor ajuta la prevenirea potențialelor consecințe negative asupra sănătății mediului și a oamenilor. Pentru mai multe informații detaliate cu privire la casarea acestui echipament vechi, contactați autoritățile locale, serviciul de salubritate sau magazinul de la care ați achiziționat produsul.

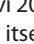
Slovenčina (Slovak) - Informácie o ochrane životného prostredia pre zákazníkov v Európskej únii

Podľa európskej smernice 2002/96/ES zariadenie s týmto symbolom  na produkte a/alebo jeho balení nesmie byť likvidované spolu s netriedeným komunálnym odpadom. Symbol znamená, že produkt by sa mal likvidovať oddelene od bežného odpadu z domácností. Je vašou povinnosťou likvidovať toto i ostatné elektrické a elektronické zariadenia prostredníctvom špecializovaných zberných zariadení určených vládou alebo miestnymi orgánmi. Správna likvidácia a recyklácia pomôže zabrániť prípadným negatívnym dopadom na životné prostredie a zdravie ľudí. Ak máte záujem o podrobnejšie informácie o likvidácii starého zariadenia, obráťte sa, prosím, na miestne orgány, organizácie zaoberajúce sa likvidáciou odpadov alebo obchod, v ktorom ste si produkt zakúpili.


Slovenčina (Slovene) - Okoljske informacije za stranke v Evropski uniji

Evropska direktiva 2002/96/EC prepoveduje odlaganje opreme, označene s tem simbolom  – na izdelku in/ali na embalaži – med običajne, nerazvrščene odpadke. Ta simbol opozarja, da je treba izdelek odvreči ločeno od preostalih gospodinjskih odpadkov. Vaša odgovornost je, da to in preostalo električno in elektronsko opremo odnesete na posebna zbirališča, ki jih določijo državne ustanove ali lokalna uprava. S pravilnim odlaganjem in recikliranjem boste preprečili morebitne škodljive vplive na okolje in zdravje ljudi. Če želite izvedeti več o odlaganju stare opreme, se obrnite na lokalno upravo, odpad ali trgovino, kjer ste izdelek kupili.

Suomi (Finnish) - Ympäristöä koskevia tietoja EU-alueen asiakkaille

EU-direktiivi 2002/96/EY edellyttää, että jos laitteistossa on tämä symboli  itse tuotteessa ja/tai sen pakkauksessa, laitteistoa ei saa hävittää jätteillemattoman yhdyskuntajätteen mukana. Symboli merkitsee sitä, että tämä tuote on hävitettävä erillään tavallisesta kotitalousjätteestä. Sinun vastuullasi on hävittää tämä elektroniikkatuote ja muut vastaavat elektroniikkatuotteet viemällä tuote tai tuotteet viranomaisten määräämään keräyspisteeseen. Laitteiston oikea hävittäminen estää mahdolliset kielteiset vaikutukset ympäristöön ja ihmisten terveyteen. Lisätietoja vanhan laitteiston oikeasta hävitystavasta saa paikallisilta viranomaisilta, jätteenhävityspalvelusta tai siitä myymälästä, josta ostit tuotteen.

Svenska (Swedish) - Miljöinformation för kunder i Europeiska unionen

Det europeiska direktivet 2002/96/EC kräver att utrustning med denna symbol  på produkten och/eller förpackningen inte får kastas med osorterat kommunalt avfall. Symbolen visar att denna produkt bör kastas efter att den avskiljts från vanligt hushållsavfall. Det faller på ditt ansvar att kasta denna och annan elektrisk och elektronisk utrustning på fastställda samlingsplatser utsedda av regeringen eller lokala myndigheter. Korrekt kassering och återvinning skyddar mot eventuella negativa konsekvenser för miljön och personhälsa. För mer detaljerad information om kassering av din gamla utrustning kontaktar du dina lokala myndigheter, avfallshantering eller butiken där du köpte produkten.



WEB: For additional information, please visit www.linksys.com

Appendix H: Wireless Product Regulatory Information

FCC Statement

This device complies with Part 15 of the FCC Rules. Operation is subject to the following two conditions: (1) This device may not cause harmful interference, and (2) this device must accept any interference received, including interference that may cause undesired operation.

This product has been tested and complies with the specifications for a Class B digital device, pursuant to Part 15 of the FCC Rules. These limits are designed to provide reasonable protection against harmful interference in a residential installation. This equipment generates, uses, and can radiate radio frequency energy and, if not installed and used according to the instructions, may cause harmful interference to radio communications. However, there is no guarantee that interference will not occur in a particular installation. If this equipment does cause harmful interference to radio or television reception, which is found by turning the equipment off and on, the user is encouraged to try to correct the interference by one or more of the following measures:

- Reorient or relocate the receiving antenna
- Increase the separation between the equipment or devices
- Connect the equipment to an outlet other than the receiver's
- Consult a dealer or an experienced radio/TV technician for assistance

FCC Caution: Any changes or modifications not expressly approved by the party responsible for compliance could void the user's authority to operate this equipment.

FCC Radiation Exposure Statement

This equipment complies with FCC radiation exposure limits set forth for an uncontrolled environment. This equipment should be installed and operated with minimum distance 20cm between the radiator and your body.

This transmitter must not be co-located or operating in conjunction with any other antenna or transmitter. IEEE 802.11b or 802.11g operation of this product in the USA is firmware-limited to channels 1 through 11.

Safety Notices

- Caution: To reduce the risk of fire, use only No.26 AWG or larger telecommunication line cord.
- Do not use this product near water, for example, in a wet basement or near a swimming pool.
- Avoid using this product during an electrical storm. There may be a remote risk of electric shock from lightning.



WARNING: This product contains lead, known to the State of California to cause cancer, and birth defects or other reproductive harm. Wash hands after handling.

Industry Canada Statement

This device complies with Industry Canada ICES-003 and RSS210 rules.

Operation is subject to the following two conditions:

1. This device may not cause interference and
2. This device must accept any interference, including interference that may cause undesired operation of the device. This device has been designed to operate with an antenna having a maximum gain of 2dBi. Antenna having a higher gain is strictly prohibited per regulations of Industry Canada. The required antenna impedance is 50 ohms.

To reduce potential radio interference to other users, the antenna type and its gain should be so chosen that the EIRP is not more than required for successful communication.

Industry Canada Radiation Exposure Statement:

This equipment complies with IC radiation exposure limits set forth for an uncontrolled environment. This equipment should be installed and operated with minimum distance 20cm between the radiator & your body.

This transmitter must not be co-located or operating in conjunction with any other antenna or transmitter.

Avis d'Industrie Canada

Cet appareil est conforme aux normes NMB003 et RSS210 d'Industrie Canada.

L'utilisation de ce dispositif est autorisée seulement aux conditions suivantes :

1. il ne doit pas produire de brouillage et
2. il doit accepter tout brouillage radioélectrique reçu, même si ce brouillage est susceptible de compromettre le fonctionnement du dispositif. Le dispositif a été conçu pour fonctionner avec une antenne ayant un gain maximum de 2 dBi. Les règlements d'Industrie Canada interdisent strictement l'utilisation d'antennes dont le gain est supérieur à cette limite. L'impédance requise de l'antenne est de 50 ohms.
Afin de réduire le risque d'interférence aux autres utilisateurs, le type d'antenne et son gain doivent être choisis de façon à ce que la puissance isotrope rayonnée équivalente (p.i.r.e.) ne soit pas supérieure au niveau requis pour obtenir une communication satisfaisante.

Avis d'Industrie Canada concernant l'exposition aux radiofréquences :

Ce matériel est conforme aux limites établies par IC en matière d'exposition aux radiofréquences dans un environnement non contrôlé. Ce matériel doit être installé et utilisé à une distance d'au moins 20 cm entre l'antenne et le corps de l'utilisateur.

L'émetteur ne doit pas être placé près d'une autre antenne ou d'un autre émetteur, ou fonctionner avec une autre antenne ou un autre émetteur.

Wireless Disclaimer

The maximum performance for wireless is derived from IEEE Standard 802.11 specifications. Actual performance can vary, including lower wireless network capacity, data throughput rate, range and coverage. Performance depends on many factors, conditions and variables, including distance from the access point, volume of network traffic, building materials and construction, operating system used, mix of wireless products used, interference and other adverse conditions.

Avis de non-responsabilité concernant les appareils sans fil


Les performances maximales pour les réseaux sans fil sont tirées des spécifications de la norme IEEE 802.11. Les performances réelles peuvent varier, notamment en fonction de la capacité du réseau sans fil, du débit de la transmission de données, de la portée et de la couverture. Les performances dépendent de facteurs, conditions et variables multiples, en particulier de la distance par rapport au point d'accès, du volume du trafic réseau, des matériaux utilisés dans le bâtiment et du type de construction, du système d'exploitation et de la combinaison de produits sans fil utilisés, des interférences et de toute autre condition défavorable.

User Information for Consumer Products Covered by EU Directive 2002/96/EC on Waste Electric and Electronic Equipment (WEEE)


This document contains important information for users with regards to the proper disposal and recycling of Linksys products. Consumers are required to comply with this notice for all electronic products bearing the following symbol:




English - Environmental Information for Customers in the European Union

European Directive 2002/96/EC requires that the equipment bearing this symbol  on the product and/or its packaging must not be disposed of with unsorted municipal waste. The symbol indicates that this product should be disposed of separately from regular household waste streams. It is your responsibility to dispose of this and other electric and electronic equipment via designated collection facilities appointed by the government or local authorities. Correct disposal and recycling will help prevent potential negative consequences to the environment and human health. For more detailed information about the disposal of your old equipment, please contact your local authorities, waste disposal service, or the shop where you purchased the product.


Български (Bulgarian) - Информация относно опазването на околната среда за потребители в Европейския съюз

Европейска директива 2002/96/ЕС изисква уредите, носещи този символ  върху изделието и/или опаковката му, да не се изхвърлят с несортирани битови отпадъци. Символът обозначава, че изделието трябва да се изхвърля отделно от сметосъбирането на обикновените битови отпадъци. Ваша е отговорността този и другите електрически и електронни уреди да се изхвърлят в предварително определени от държавните или общински органи специализирани пунктове за събиране. Правилното изхвърляне и рециклиране ще спомогнат да се предотвратят евентуални вредни за околната среда и здравето на населението последствия. За по-подробна информация относно изхвърлянето на вашите стари уреди се обърнете към местните власти, службите за сметосъбиране или магазина, от който сте закупили уреда.


Čeština (Czech) - Informace o ochraně životního prostředí pro zákazníky v zemích Evropské unie

Evropská směrnice 2002/96/ES zakazuje, aby zařízení označené tímto symbolem  na produktu anebo na obalu bylo likvidováno s netříděným komunálním odpadem. Tento symbol udává, že daný produkt musí být likvidován odděleně od běžného komunálního odpadu. Odpovídáte za likvidaci tohoto produktu a dalších elektrických a elektronických zařízení prostřednictvím určených sběrných míst stanovených vládou nebo místními úřady. Správná likvidace a recyklace pomáhá předcházet potenciálním negativním dopadům na životní prostředí a lidské zdraví. Podrobnější informace o likvidaci starého vybavení si laskavě vyžádejte od místních úřadů, podniku zabývajícího se likvidací komunálních odpadů nebo obchodu, kde jste produkt zakoupili.


Dansk (Danish) - Miljøinformation for kunder i EU

EU-direktiv 2002/96/EF kræver, at udstyr der bærer dette symbol  på produktet og/eller emballagen ikke må bortskaffes som usorteret kommunalt affald. Symbolet betyder, at dette produkt skal bortskaffes adskilt fra det almindelige husholdningsaffald. Det er dit ansvar at bortskaffe dette og andet elektrisk og elektronisk udstyr via bestemte indsamlingssteder udpeget af staten eller de lokale myndigheder. Korrekt bortskaffelse og genvinding vil hjælpe med til at undgå mulige skader for miljøet og menneskers sundhed. Kontakt venligst de lokale myndigheder, renovationstjenesten eller den butik, hvor du har købt produktet, angående mere detaljeret information om bortskaffelse af dit gamle udstyr.

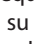
Deutsch (German) - Umweltinformation für Kunden innerhalb der Europäischen Union

Die Europäische Richtlinie 2002/96/EC verlangt, dass technische Ausrüstung, die direkt am Gerät und/oder an der Verpackung mit diesem Symbol versehen ist , nicht zusammen mit unsortiertem Gemeindeabfall entsorgt werden darf. Das Symbol weist darauf hin, dass das Produkt von regulärem Haushaltsmüll getrennt entsorgt werden sollte. Es liegt in Ihrer Verantwortung, dieses Gerät und andere elektrische und elektronische Geräte über die dafür zuständigen und von der Regierung oder örtlichen Behörden dazu bestimmten Sammelstellen zu entsorgen. Ordnungsgemäßes Entsorgen und Recyceln trägt dazu bei, potentielle negative Folgen für Umwelt und die menschliche Gesundheit zu vermeiden. Wenn Sie weitere Informationen zur Entsorgung Ihrer Altgeräte benötigen, wenden Sie sich bitte an die örtlichen Behörden oder städtischen Entsorgungsdienste oder an den Händler, bei dem Sie das Produkt erworben haben.

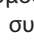
Eesti (Estonian) - Keskkonnaalane informatsioon Euroopa Liidu asuvatele klientidele

Euroopa Liidu direktiivi 2002/96/EÜ nõuete kohaselt on seadmeid, millel on tootel või pakendil käesolev sümbol , keelatud kõrvaldada koos sorteerimata olmejäätmetega. See sümbol näitab, et toode tuleks kõrvaldada eraldi tavalistest olmejäätmevoogudest. Olete kohustatud kõrvaldama käesoleva ja ka muud elektri- ja elektroonikaseadmed riigi või kohalike ametiasutuste poolt ette nähtud kogumispunktide kaudu. Seadmete korrektne kõrvaldamine ja ringlussevõtt aitab vältida võimalikke negatiivseid tagajärgi keskkonnale ning inimeste tervisele. Vanade seadmete kõrvaldamise kohta täpsema informatsiooni saamiseks võtke palun ühendust kohalike ametiasutustega, jäätmekäitlusfirmaga või kauplusega, kust te toote ostsite.

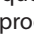
Español (Spanish) - Información medioambiental para clientes de la Unión Europea

La Directiva 2002/96/CE de la UE exige que los equipos que lleven este símbolo , en el propio aparato y/o en su embalaje no deben eliminarse junto con otros residuos urbanos no seleccionados. El símbolo indica que el producto en cuestión debe separarse de los residuos domésticos convencionales con vistas a su eliminación. Es responsabilidad suya desechar este y cualesquiera otros aparatos eléctricos y electrónicos a través de los puntos de recogida que ponen a su disposición el gobierno y las autoridades locales. Al desechar y reciclar correctamente estos aparatos estará contribuyendo a evitar posibles consecuencias negativas para el medio ambiente y la salud de las personas. Si desea obtener información más detallada sobre la eliminación segura de su aparato usado, consulte a las autoridades locales, al servicio de recogida y eliminación de residuos de su zona o pregunte en la tienda donde adquirió el producto.

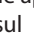
Ελληνικά (Greek) - Στοιχεία περιβαλλοντικής προστασίας για πελάτες εντός της Ευρωπαϊκής Ένωσης

Η Κοινοτική Οδηγία 2002/96/ΕΚ απαιτεί ότι ο εξοπλισμός ο οποίος φέρει αυτό το σύμβολο , στο προϊόν και/ή στη συσκευασία του δεν πρέπει να απορρίπτεται μαζί με τα μικτά κοινотικά απορρίμματα. Το σύμβολο υποδεικνύει ότι αυτό το προϊόν θα πρέπει να απορρίπτεται ξεχωριστά από τα συνήθη οικιακά απορρίμματα. Είστε υπεύθυνος για την απόρριψη του παρόντος και άλλου ηλεκτρικού και ηλεκτρονικού εξοπλισμού μέσω των καθορισμένων εγκαταστάσεων συγκέντρωσης απορριμμάτων οι οποίες παρέχονται από το κράτος ή τις αρμόδιες τοπικές αρχές. Η σωστή απόρριψη και ανακύκλωση συμβάλλει στην πρόληψη πιθανών αρνητικών συνεπειών για το περιβάλλον και την υγεία. Για περισσότερες πληροφορίες σχετικά με την απόρριψη του παλιού σας εξοπλισμού, παρακαλώ επικοινωνήστε με τις τοπικές αρχές, τις υπηρεσίες απόρριψης ή το κατάστημα από το οποίο αγοράσατε το προϊόν.

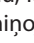
Français (French) - Informations environnementales pour les clients de l'Union européenne

La directive européenne 2002/96/CE exige que l'équipement sur lequel est apposé ce symbole , sur le produit et/ou son emballage ne soit pas jeté avec les autres ordures ménagères. Ce symbole indique que le produit doit être éliminé dans un circuit distinct de celui pour les déchets des ménages. Il est de votre responsabilité de jeter ce matériel ainsi que tout autre matériel électrique ou électronique par les moyens de collecte indiqués par le gouvernement et les pouvoirs publics des collectivités territoriales. L'élimination et le recyclage en bonne et due forme ont pour but de lutter contre l'impact néfaste potentiel de ce type de produits sur l'environnement et la santé publique. Pour plus d'informations sur le mode d'élimination de votre ancien équipement, veuillez prendre contact avec les pouvoirs publics locaux, le service de traitement des déchets, ou l'endroit où vous avez acheté le produit.


Italiano (Italian) - Informazioni relative all'ambiente per i clienti residenti nell'Unione Europea

La direttiva europea 2002/96/EC richiede che le apparecchiature contrassegnate con questo simbolo , sul prodotto e/o sull'imballaggio non siano smaltite insieme ai rifiuti urbani non differenziati. Il simbolo indica che questo prodotto non deve essere smaltito insieme ai normali rifiuti domestici. È responsabilità del proprietario smaltire sia questi prodotti sia le altre apparecchiature elettriche ed elettroniche mediante le specifiche strutture di raccolta indicate dal governo o dagli enti pubblici locali. Il corretto smaltimento ed il riciclaggio aiuteranno a prevenire conseguenze potenzialmente negative per l'ambiente e per la salute dell'essere umano. Per ricevere informazioni più dettagliate circa lo smaltimento delle vecchie apparecchiature in Vostro possesso, Vi invitiamo a contattare gli enti pubblici di competenza, il servizio di smaltimento rifiuti o il negozio nel quale avete acquistato il prodotto.

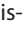
Latviešu valoda (Latvian) - Ekoloģiska informācija klientiem Eiropas Savienības jurisdikcijā

Direktīvā 2002/96/EK ir prasība, ka aprīkojumu, kam pievienota zīme , uz paša izstrādājuma vai uz tā iesaiņojuma, nedrīkst izmest nešķīrotā veidā kopā ar komunālajiem atkritumiem (tiem, ko rada vietēji iedzīvotāji un uzņēmumi). Šī zīme nozīmē to, ka šī ierīce ir jāizmet atkritumos tā, lai tā nenonāktu kopā ar parastiem mājaimniecības atkritumiem. Jūsu pienākums ir šo un citas elektriskās un elektroniskās ierīces izmest atkritumos, izmantojot īpašus atkritumu savākšanas veidus un līdzekļus, ko nodrošina valsts un pašvaldību iestādes. Ja izmešana atkritumos un pārstrāde tiek veikta pareizi, tad mazinās iespējamais kaitējums dabai un cilvēku veselībai. Sīkākas ziņas par novecojuša aprīkojuma izmešanu atkritumos jūs varat saņemt vietējā pašvaldībā, atkritumu savākšanas dienestā, kā arī veikalā, kur iegādājāties šo izstrādājumu.


Lietuvškai (Lithuanian) - Aplinkosaugos informacija, skirta Europos Sąjungos vartotojams

Europos direktyva 2002/96/EC numato, kad įrangos, kuri ir  kurios pakuotė yra pažymėta šiuo simboliu (įveskite simbolį), negalima šalinti kartu su nerūšiuotomis komunalinėmis atliekomis. Šis simbolis rodo, kad gaminį reikia šalinti atskirai nuo bendro buitinių atliekų srauto. Jūs privalote užtikrinti, kad ši ir kita elektros ar elektroninė įranga būtų šalinama per tam tikras nacionalinės ar vietinės valdžios nustatytas atliekų rinkimo sistemas. Tinkamai šalinant ir perdirbant atliekas, bus išvengta galimos žalos aplinkai ir žmonių sveikatai. Daugiau informacijos apie jūsų senos įrangos šalinimą gali pateikti vietinės valdžios institucijos, atliekų šalinimo tarnybos arba parduotuvės, kuriose įsigijote tą gaminį.


Malti (Maltese) - Informazzjoni Ambjentali għal Klijenti fl-Unjoni Ewropea

Id-Direttiva Ewropea 2002/96/KE titlob li t-tagħmir li jkun fih is-simbolu  fuq il-prodott u/jew fuq l-ippakkjar ma jistax jintrema ma' skart muniċipali li ma għex isseparat. Is-simbolu jindika li dan il-prodott għandu jintrema separatament minn ma' l-iskart domestiku regolari. Hija responsabbiltà tiegħek li tarmi dan it-tagħmir u kull tagħmir ieħor ta' l-elettriku u elettroniku permezz ta' faċilitajiet ta' għbir appuntati apposta mill-gvern jew mill-awtoritajiet lokali. Ir-rimi b'mod korrett u r-riċiklaġġ jgħin jipprevjeni konsegwenzi negattivi potenzjali għall-ambjent u għas-saħħa tal-bniedem. Għal aktar informazzjoni dettaljata dwar ir-rimi tat-tagħmir antik tiegħek, jekk jogħġbok ikkuntattja lill-awtoritajiet lokali tiegħek, is-servizzi għar-rimi ta' l-iskart, jew il-ħanut minn fejn xtrajt il-prodott.


Magyar (Hungarian) - Környezetvédelmi információ az európai uniós vásárlók számára

A 2002/96/EC számú európai uniós irányelv megkívánja, hogy azokat a termékeket, amelyeken, és/vagy amelyek csomagolásán az alábbi címke  megjelenik, tilos a többi szelektálatlan lakossági hulladékkal együtt kidobni. A címke azt jelöli, hogy az adott termék kidobásakor a szokványos háztartási hulladékelszállítási rendszerektől elkülönített eljárást kell alkalmazni. Az Ön felelőssége, hogy ezt, és más elektromos és elektronikus berendezéseit a kormányzati vagy a helyi hatóságok által kijelölt gyűjtőrendszereken keresztül számolja fel. A megfelelő hulladékfeldolgozás segít a környezetre és az emberi egészségre potenciálisan ártalmas negatív hatások megelőzésében. Ha elavult berendezéseinek felszámolásához további részletes információra van szüksége, kérjük, lépjen kapcsolatba a helyi hatóságokkal, a hulladékfeldolgozási szolgálattal, vagy azzal üzlettel, ahol a terméket vásárolta.

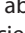
Nederlands (Dutch) - Milieu-informatie voor klanten in de Europese Unie

De Europese Richtlijn 2002/96/EC schrijft voor dat apparatuur die is voorzien van dit symbool  op het product of de verpakking, niet mag worden ingezameld met niet-gescheiden huishoudelijk afval. Dit symbool geeft aan dat het product apart moet worden ingezameld. U bent zelf verantwoordelijk voor de vernietiging van deze en andere elektrische en elektronische apparatuur via de daarvoor door de landelijke of plaatselijke overheid aangewezen inzamelingskanalen. De juiste vernietiging en recycling van deze apparatuur voorkomt mogelijke negatieve gevolgen voor het milieu en de gezondheid. Voor meer informatie over het vernietigen van uw oude apparatuur neemt u contact op met de plaatselijke autoriteiten of afvalverwerkdienst, of met de winkel waar u het product hebt aangeschaft.

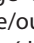
Norsk (Norwegian) - Miljøinformasjon for kunder i EU

EU-direktiv 2002/96/EF krever at utstyr med følgende symbol  avbildet på produktet og/eller pakningen, ikke må kastes sammen med usortert avfall. Symbolet indikerer at dette produktet skal håndteres atskilt fra ordinær avfallsinnsamling for husholdningsavfall. Det er ditt ansvar å kvitte deg med dette produktet og annet elektrisk og elektronisk avfall via egne innsamlingsordninger slik myndighetene eller kommunene bestemmer. Korrekt avfallshåndtering og gjenvinning vil være med på å forhindre mulige negative konsekvenser for miljø og helse. For nærmere informasjon om håndtering av det kasserte utstyret ditt, kan du ta kontakt med kommunen, en innsamlingsstasjon for avfall eller butikken der du kjøpte produktet.

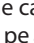
Polski (Polish) - Informacja dla klientów w Unii Europejskiej o przepisach dotyczących ochrony środowiska

Dyrektywa Europejska 2002/96/EC wymaga, aby sprzęt oznaczony symbolem  znajdującym się na produkcie i/lub jego opakowaniu nie był wyrzucany razem z innymi niesortowanymi odpadami komunalnymi. Symbol ten wskazuje, że produkt nie powinien być usuwany razem ze zwykłymi odpadami z gospodarstw domowych. Na Państwu spoczywa obowiązek wyrzucania tego i innych urządzeń elektrycznych oraz elektronicznych w punktach odbioru wyznaczonych przez władze krajowe lub lokalne. Pozbywanie się sprzętu we właściwy sposób i jego recykling pomogą zapobiec potencjalnie negatywnym konsekwencjom dla środowiska i zdrowia ludzkiego. W celu uzyskania szczegółowych informacji o usuwaniu starego sprzętu, prosimy zwrócić się do lokalnych władz, służb oczyszczania miasta lub sklepu, w którym produkt został nabyty.


Português (Portuguese) - Informação ambiental para clientes da União Europeia

A Directiva Europeia 2002/96/CE exige que o equipamento que exibe este símbolo  no produto e/ou na sua embalagem não seja eliminado junto com os resíduos municipais não separados. O símbolo indica que este produto deve ser eliminado separadamente dos resíduos domésticos regulares. É da sua responsabilidade eliminar este e qualquer outro equipamento eléctrico e electrónico através das instalações de recolha designadas pelas autoridades governamentais ou locais. A eliminação e reciclagem correctas ajudarão a prevenir as consequências negativas para o ambiente e para a saúde humana. Para obter informações mais detalhadas sobre a forma de eliminar o seu equipamento antigo, contacte as autoridades locais, os serviços de eliminação de resíduos ou o estabelecimento comercial onde adquiriu o produto.


Română (Romanian) - Informații de mediu pentru clienții din Uniunea Europeană

Directiva europeană 2002/96/CE impune ca echipamentele care prezintă acest simbol  pe produs și/sau pe ambalajul acestuia să nu fie casate împreună cu gunoiul menajer municipal. Simbolul indică faptul că acest produs trebuie să fie casat separat de gunoiul menajer obișnuit. Este responsabilitatea dvs. să cașati acest produs și alte echipamente electrice și electronice prin intermediul unităților de colectare special desemnate de guvern sau de autoritățile locale. Casarea și reciclarea corecte vor ajuta la prevenirea potențialelor consecințe negative asupra sănătății mediului și a oamenilor. Pentru mai multe informații detaliate cu privire la casarea acestui echipament vechi, contactați autoritățile locale, serviciul de salubritate sau magazinul de la care ați achiziționat produsul.

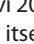
Slovenčina (Slovak) - Informácie o ochrane životného prostredia pre zákazníkov v Európskej únii

Podľa európskej smernice 2002/96/ES zariadenie s týmto symbolom  na produkte a/alebo jeho balení nesmie byť likvidované spolu s netriedeným komunálnym odpadom. Symbol znamená, že produkt by sa mal likvidovať oddelene od bežného odpadu z domácností. Je vašou povinnosťou likvidovať toto i ostatné elektrické a elektronické zariadenia prostredníctvom špecializovaných zberných zariadení určených vládou alebo miestnymi orgánmi. Správna likvidácia a recyklácia pomôže zabrániť prípadným negatívnym dopadom na životné prostredie a zdravie ľudí. Ak máte záujem o podrobnejšie informácie o likvidácii starého zariadenia, obráťte sa, prosím, na miestne orgány, organizácie zaoberajúce sa likvidáciou odpadov alebo obchod, v ktorom ste si produkt zakúpili.


Slovenčina (Slovene) - Okoljske informacije za stranke v Evropski uniji

Evropska direktiva 2002/96/EC prepoveduje odlaganje opreme, označene s tem simbolom  – na izdelku in/ali na embalaži – med običajne, nerazvrščene odpadke. Ta simbol opozarja, da je treba izdelek odvreči ločeno od preostalih gospodinjstvih odpadkov. Vaša odgovornost je, da to in preostalo električno in elektronsko opremo odnesete na posebna zbirališča, ki jih določijo državne ustanove ali lokalna uprava. S pravilnim odlaganjem in recikliranjem boste preprečili morebitne škodljive vplive na okolje in zdravje ljudi. Če želite izvedeti več o odlaganju stare opreme, se obrnite na lokalno upravo, odpad ali trgovino, kjer ste izdelek kupili.

Suomi (Finnish) - Ympäristöä koskevia tietoja EU-alueen asiakkaille

EU-direktiivi 2002/96/EY edellyttää, että jos laitteistossa on tämä symboli  itse tuotteessa ja/tai sen pakkauksessa, laitteistoa ei saa hävittää lajittelemattoman yhdyskuntajätteen mukana. Symboli merkitsee sitä, että tämä tuote on hävitettävä erillään tavallisesta kotitalousjätteestä. Sinun vastuullasi on hävittää tämä elektroniikkatuote ja muut vastaavat elektroniikkatuotteet viemällä tuote tai tuotteet viranomaisten määräämään keräyspisteeseen. Laitteiston oikea hävittäminen estää mahdolliset kielteiset vaikutukset ympäristöön ja ihmisten terveyteen. Lisätietoja vanhan laitteiston oikeasta hävitystavasta saa paikallisilta viranomaisilta, jätteenhävityspalvelusta tai siitä myymälästä, josta ostit tuotteen.

Svenska (Swedish) - Miljöinformation för kunder i Europeiska unionen

Det europeiska direktivet 2002/96/EC kräver att utrustning med denna symbol  på produkten och/eller förpackningen inte får kastas med osorterat kommunalt avfall. Symbolen visar att denna produkt bör kastas efter att den avskiljts från vanligt hushållsavfall. Det faller på ditt ansvar att kasta denna och annan elektrisk och elektronisk utrustning på fastställda samlingsplatser utsedda av regeringen eller lokala myndigheter. Korrekt kassering och återvinning skyddar mot eventuella negativa konsekvenser för miljön och personhälsa. För mer detaljerad information om kassering av din gamla utrustning kontaktar du dina lokala myndigheter, avfallshantering eller butiken där du köpte produkten.



WEB: For additional information, please visit www.linksys.com

Appendix I: Contact Information

Linksys Contact Information	
Website	http://www.linksys.com
E-Mail	support@linksys.com
FTP Site	ftp.linksys.com
Advice Line	800-546-5797 (LINKSYS)
Support	800-326-7114
RMA (Return Merchandise Authorization)	949-823-3000
Fax	949-823-3002



NOTE: Details on warranty and RMA issues can be found in the Warranty and Regulatory Information section of this Guide.
