

LINKSYS®

A Division of Cisco Systems, Inc.



PrintServer for USB

with 4-Port Switch

User Guide



Model No. **PSUS4**

CISCO SYSTEMS



Copyright and Trademarks

Specifications are subject to change without notice. Linksys is a registered trademark or trademark of Cisco Systems, Inc. and/or its affiliates in the U.S. and certain other countries. Copyright © 2003 Cisco Systems, Inc. All rights reserved. Other brands and product names are trademarks or registered trademarks of their respective holders.

How to Use this User Guide

This User Guide has been designed to make understanding networking with the PrintServer easier than ever. Look for the following items when reading this User Guide:



This checkmark means there is a note of interest and is something you should pay special attention to while using the PrintServer.



This exclamation point means there is a caution or warning and is something that could damage your property or the PrintServer.



This question mark provides you with a reminder about something you might need to do while using the PrintServer.

In addition to these symbols, there are definitions for technical terms that are presented like this:

word: definition.

Also, each figure (diagram, screenshot, or other image) is provided with a figure number and description, like this:

Figure 0-1: Sample Figure Description

Figure numbers and descriptions can also be found in the "List of Figures" section in the "Table of Contents".

Table of Contents

Chapter 1: Introduction	1
Welcome	1
What's in this Guide?	1
Chapter 2: Getting to Know the USB PrintServer	4
The Back Panel	4
The Front Panel	5
Chapter 3: Connecting the PrintServer	6
Overview	6
Connecting the USB PrintServer to your Network	6
Chapter 4: Installing the PrintServer using the Setup Wizard	7
Installation	7
Chapter 5: Windows Driver Installation	11
Overview	11
Installation	11
Chapter 6: Configuring the PrintServer	16
Overview	16
The Setup Tab	6
The Protocol Tab - TCP/IP	17
The Printer Tab - Internet Printing	19
Chapter 7: Internet Printing Protocol	23
Overview	23
Windows IPP Client Setup	23
Chapter 8: Internet Printing Protocol	23
Overview	23
Windows IPP Client Setup	23
Chapter 9: Bi-Admin Management	27
Overview	27
Bi-Admin Installation	27
Starting the Bi-Admin Management Utility	29
The Bi-Admin Management Utility	30
Appendix A: Troubleshooting	37

Common Problems and Solutions	37
Appendix B: About Bi-Directional Printing	39
Appendix C: Upgrading Firmware	40
Appendix D: Windows Help	41
Appendix E: Glossary	42
Appendix F: Specifications	48
Appendix G: Warranty Information	49
Appendix H: Regulatory Information	50
Appendix I: Contact Information	51

List of Figures

Figure 2-1: USB PrintServer's Back Panel	4
Figure 2-2: The USB PrintServer's Front Panel	5
Figure 2-3: The USB PrintServer's Side Panel	5
Figure 2-13: The Broadband Router's Front Panel	5
Figure 3-1: Connecting to the LAN Port	6
Figure 3-2: Connecting to the USB Port	6
Figure 3-3: Connecting to the Power Port	6
Figure 4-1: Welcome	7
Figure 4-2: Searching for the USB PrintServer	7
Figure 4-3: USB PrintServer Setup	7
Figure 4-4: Password	8
Figure 4-5: Basic Settings	8
Figure 4-6: IP Settings	9
Figure 4-7: Set PrintServer's Password	9
Figure 4-8: Confirmation	10
Figure 4-9: Congratulations	10
Figure 4-20: Properties	10
Figure 4-21: TCP/IP	10
Figure 4-22: IP Address	10
Figure 4-34: Properties	10
Figure 4-35: TCP/IP	10
Figure 4-36: IP Address	10
Figure 4-48: Confirmation	10
Figure 4-60: Properties	10
Figure 4-61: TCP/IP	10
Figure 4-62: IP Address	10
Figure 4-74: Properties	10
Figure 4-75: TCP/IP	10
Figure 4-76: IP Address	10
Figure 5-1: Welcome	11

Figure 5-2: Driver's Welcome	12
Figure 5-3: Choose Destination Location	12
Figure 5-4: Select Program Folder	13
Figure 5-5: Copy Folder	13
Figure 5-6: Setup Complete	13
Figure 5-7: TCP/IP	14
Figure 5-8: IP Address	14
Figure 5-9: Added Successfully	14
Figure 5-10: Configure Printer Port	15
Figure 5-20: IP Address	15
Figure 5-32: IP Address	15
Figure 6-1: Setup	16
Figure 6-2: TCP/IP	17
Figure 6-3: Apple Talk	17
Figure 6-4: NetBEUI	18
Figure 6-5: Internet Printing	19
Figure 6-6: Logical Port	20
Figure 6-7: Device Status	21
Figure 6-8: Router IP	21
Figure 6-9: Exit	22
Figure 6-10: Time Setting	22
Figure 6-11: Setup Tab - DDNS	22
Figure 6-12: Setup Tab - MAC Address Clone	22
Figure 7-1: Configure IPP Port	23
Figure 7-2: AddPort	24
Figure 7-3: Configure IPP Port	24
Figure 7-4: Locate Your Printer	25
Figure 7-5: Connect to Printer	25
Figure 8-1: Welcome	27
Figure 8-2: Bi-Admin Setup Welcome	27
Figure 8-3: Choose Destination Location	28
Figure 8-4: Select Program Folder	28
Figure 8-5: Setup Complete	28

Figure 8-6: Connected Protocol	29
Figure 8-7: Searching for Device	29
Figure 8-8: Setup Complete	29
Figure 8-9: Bi-Admin Management Utility	30
Figure 8-10: Device Information	30
Figure 8-11: Verify Password	30
Figure 8-12: Printer Status	31
Figure 8-13: Printer Configuration	31
Figure 8-14: Verify Password	32
Figure 8-15: Configuration - System	32
Figure 8-16: Dynamic IP Address (DHCP)	33
Figure 8-17: Fixed IP Address	33
Figure 8-23: Setup Complete	33
Figure 8-18: Apple Talk	34
Figure 8-19: NetBEUI	34
Figure 8-20: Internet Printing	35
Figure 8-21: Port	35
Figure 8-22: Attached Remote	36
Figure C-1: Upgrade Firmware	40

Chapter 1: Introduction

Welcome

Thank you for choosing the Linksys PrintServer for USB with 4-Port Switch (PrintServer). The PrintServer will allow you to network your printers.

The Linksys PrintServer for USB with 4-Port Switch is a double upgrade for your network. First, it lets you connect a USB printer directly to your network, eliminating the need to dedicate a PC to print serving chores. Using a PrintServer frees up your "print share PC" so you don't have to leave it on all the time. It also removes the printing bottleneck, and sets your PC free to do more useful work.

In addition, the PrintServer includes a 4-port 10/100 switch, so you can easily add more devices to your network. All four ports are auto speed negotiating, and have automatic MDI/MDI-X crossover detection, so you don't have to worry about the cable type. Each port independently negotiates the best speed and half- or full-duplex mode, for up to 200Mbps of bandwidth per port. Fast store-and-forward switching prevents damaged packets from being passed on into the network.

A user-friendly Setup Wizard makes installation easy, the compact case fits anywhere, and the one megabyte print buffer size handles even large graphics-intensive print jobs. Let the Linksys PrintServer for USB with 4-Port Switch bring efficiency to your printing tasks and expand your network, in one cost-effective device.

What's in this Guide?

This user guide covers the steps for setting up and using the PrintServer.

- **Chapter 1: Introduction**
This chapter describes the PrintServer's applications and this User Guide.
- **Chapter 2: Getting to Know the PrintServer**
This chapter describes the physical features of the PrintServer.
- **Chapter 3: Connecting the PrintServer**
This chapter instructs you on how to connect the PrintServer to your network.

PrintServer for USB with 4-Port Switch

- **Chapter 4: Installing the PrintServer using the Setup Wizard**
This chapter instructs you on how to use the Setup Wizard to install your PrintServer.
- **Chapter 5: Windows Driver Installation**
This chapter explains how to install the Windows driver for the PrintServer.
- **Chapter 6: Configuring the PrintServer**
This chapter explains how to configure the PrintServer using the web-based utility.
- **Chapter 7: Internet Printing Protocol**
This chapter instruct you on how to use the PrintServer as an IPP server so you can remotely print.
- **Chapter 8: Bi-Admin Management**
This chapter explains how to configure the PrintServer using the Bi-Admin Management utility.
- **Appendix A: Troubleshooting**
This appendix describes some problems and solutions, as well as frequently asked questions, regarding installation and use of the PrintServer.
- **Appendix B: About Bi-Directional Printing**
This appendix describes bi-directional printing.
- **Appendix C: Upgrading Firmware**
This appendix instructs you on how to upgrade the firmware on your PrintServer if you should need to do so.
- **Appendix D: Windows Help**
This appendix describes how you can use Windows Help for instructions about networking, such as installing the TCP/IP protocol.
- **Appendix E: Finding the MAC Address and IP Address for your Ethernet Adapter.**
This appendix describes how to find the MAC address for your computer's Ethernet adapter so you can use the MAC filtering and/or MAC address cloning feature of the PrintServer.
- **Appendix F: Glossary**
This appendix gives a brief glossary of terms frequently used in networking.
- **Appendix G: Specifications**
This appendix provides the technical specifications for the PrintServer.
- **Appendix H: Warranty Information**
This appendix supplies the warranty information for the PrintServer..

PrintServer for USB with 4-Port Switch

- **Appendix I: Regulatory Information**
This appendix supplies the regulatory information regarding the PrintServer..
- **Appendix J: Contact Information**
This appendix provides contact information for a variety of Linksys resources, including Technical Support.

Chapter 2: Getting to Know the USB PrintServer

The Back Panel

The USB PrintServer's ports, where the cables are connected, are located on the back panel.

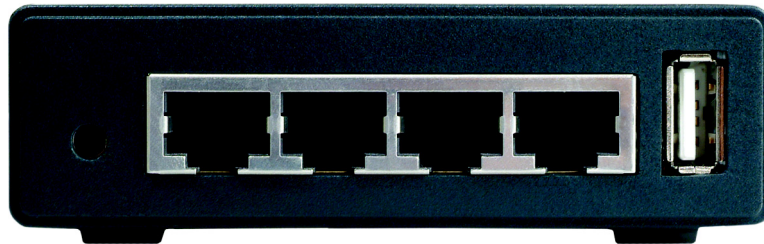


Figure 2-1: USB PrintServer's Back Panel

Reset Button	Pressing the Reset button will reset the PrintServer to the factory default settings. Refer to "To Reset the Factory Default Settings", right.
1, 2, 3, 4	These LAN ports (1, 2, 3, 4) connect the PrintServer to your networked PCs and other Ethernet network devices.
USB	The USB port is where you will connect the USB printer to the PrintServer.

Whenever you see the USB Icon (right), a USB port is nearby. The PrintServer comes with one USB cable. One end of the USB cable has a rectangular plug, which is called a Type A connector (below left). The other end of the cable has a square plug, or a Type B connector (below right). The USB cable's Type A end connects to the PrintServer and the Type B end connects to the printer.



USB Connector-Type A



USB Connector-Type B



Important: Resetting the PrintServer will erase all of your settings and replace them with the factory defaults. Do not reset the PrintServer if you want to retain the settings.

To Reset the Factory Default Settings

1. Unplug the PrintServer.
2. Press and hold the Reset button. While pressing the button, plug in the PrintServer.
3. Continue pressing the button for 10 seconds, and the PrintServer will be reset to factory defaults.

To Generate a Diagnostic Printout

1. Ensure that both the PrintServer and the printer attached to the Printer port are on.
2. Press the diagnostic button, and hold it in for 2 seconds.
3. The test page, containing the current settings, will be printed.

PostScript printers are unable to print this page. If you have a PostScript printer on the Printer port, the test page will not be printed.

The Front Panel

The PrintServer's LEDs, where information about network activity is displayed, are located on the front panel.

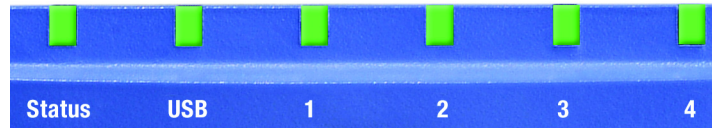


Figure 2-2: The USB PrintServer's Front Panel

Status	Green. The Status LED will remain continuously lit when a printer is correctly connected to the PrintServer. The LED will flicker when print jobs are being transmitted to the printer over the network.
USB	Green/Orange. The USB LED lights up green when there is a printer connected. The USB LED lights up orange when there is an error.
1, 2, 3, 4	Green. These numbered LEDs, corresponding with the numbered ports on the PrintServer's back panel, serve two purposes. If the LED is continuously illuminated, the PrintServer is successfully connected to a device through the LAN port. If the LED is flickering, the PrintServer is actively sending or receiving data to the wired network.



Figure 2-3: The USB PrintServer's Side Panel

The Side Panel

Power The **Power** port is where you will connect the power adapter.

Chapter 3: Connecting the PrintServer

Overview

Before starting the physical installation, make a note of the PrintServer's Default Name that is located on the bottom of the PrintServer. There is a bar code sticker with an SC number printed on it (for example, SCA71107). This number is used in the PrintServer driver installation.

Connecting the USB PrintServer to your Network

1. Plug one end of the Ethernet network cable into one of the PrintServer's LAN Ports (1-4). (See Figure 3-1.)
2. Connect the other end of the cable into your networked hub, switch, or router. The distance between the PrintServer and the other device should not exceed 328 feet (100 meters).
3. Use the USB cable to connect your printer to the PrintServer's USB port. Plug the Type A connector end into the PrintServer (Figure 3-2) and the Type B connector end into the printer.
4. Power on your printer.
5. Plug the power adapter cord into the PrintServer's Power port, which is located on the right side of the PrintServer. (See Figure 3-3.)
6. Plug the power adapter into an electrical outlet.



IMPORTANT: Make sure to use the power adapter that is supplied with the PrintServer. Use of a different power adapter could damage the PrintServer.



NOTE: The PrintServer does not have an on/off power switch. Whenever its power adapter is plugged into a power supply, the PrintServer is powered on. The PrintServer can be powered on before, during, or after your network is powered on.

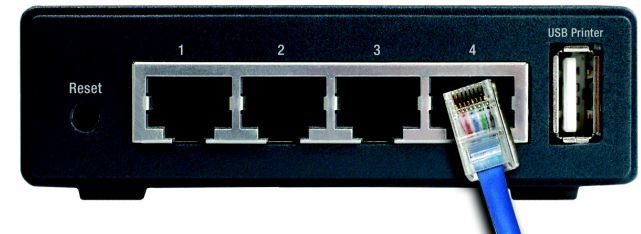


Figure 3-1: Connecting to the LAN Port

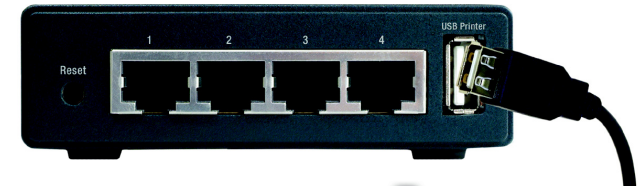


Figure 3-2: Connecting to the USB Port



Figure 3-3: Connecting to the Power Port

Chapter 4: Installing the PrintServer using the Setup Wizard

Installation

1. To begin installation of the PrintServer, you will use the Setup CD-ROM to run the Setup Wizard.
2. Insert the Setup CD-ROM into the computer's CD-ROM drive. The Setup CD-ROM should run automatically. If it does not, click the Start button and choose Run. In the box that appears, enter D:\setupWizard.exe (if "D" is the letter of your CD-ROM drive).
3. When you see Figure 4-1, click **Setup Wizard** to continue. Click **Exit** to end the installation. Click **User Guide** button to view the User Guide.
4. The screen in Figure 4-2 will appear while the Setup Wizard is searching for the USB PrintServer.
5. After the Setup Wizard has found the USB PrintServer, the screen in Figure 4-3 will appear. If this is the first time you have run the Setup Wizard, make sure that **List only new (unconfigured) Print Servers** is selected and your PrintServer is listed by its default server name. Next to Server Name is IP Address. Make a note of the PrintServer's IP address to use later in Chapter 6: Configuring the PrintServer.

If you have previously configured the Print Server, select **List all compatible Print Servers**. Click **Next** to continue.

Click **Refresh** button to refresh the screen. Click **Back** to return to the previous screen.



Figure 4-1: Welcome

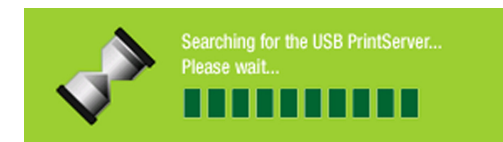


Figure 4-2: Searching for the USB PrintServer

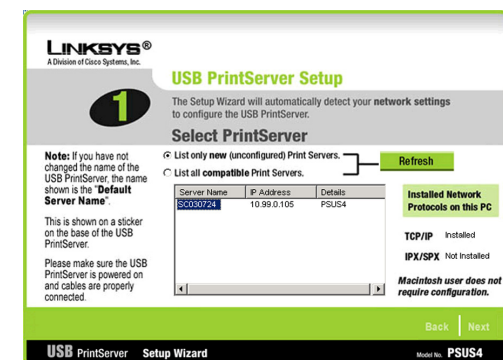


Figure 4-3: USB PrintServer Setup

PrintServer for USB with 4-Port Switch

6. The Password screen, Figure 4-4, will appear next. Enter the default password **admin** in the field. Click **Enter**.
7. The Basic Settings screen, shown in Figure 4-5, will appear. If you want to change the Device Name or Domain Name, enter the Device Name and Domain Name in the respective fields. Click **Next**.

Click **Back** to return to the previous screen.

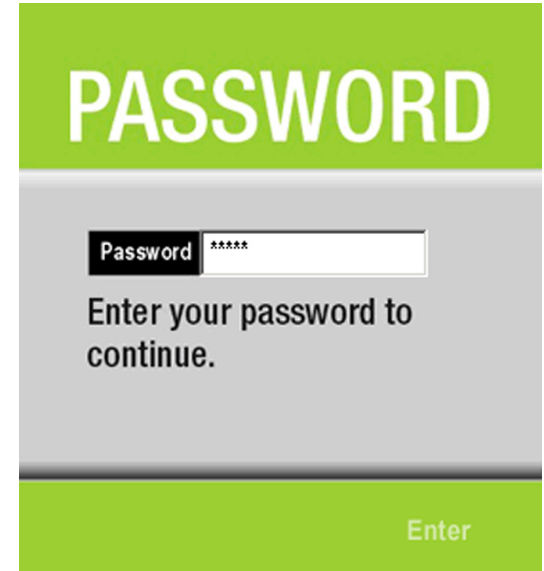
The image shows a web-based password entry screen. At the top, the word "PASSWORD" is displayed in large, white, sans-serif capital letters on a green background. Below this, on a grey background, is a text input field with the label "Password" and a masked password "*****". Underneath the input field, the text "Enter your password to continue." is displayed. At the bottom of the screen, on a green background, is a large "Enter" button.

Figure 4-4: Password

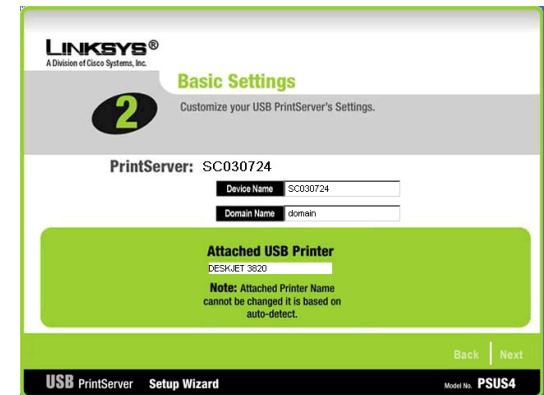
The image shows the "Basic Settings" screen of the Linksys USB PrintServer Setup Wizard. The top of the screen features the Linksys logo and the text "A Division of Cisco Systems, Inc.". Below this, the title "Basic Settings" is displayed in green, followed by the subtitle "Customize your USB PrintServer's Settings." and a large green circle containing the number "2". The main content area shows the "PrintServer: SC030724" and two input fields: "Device Name" with the value "SC030724" and "Domain Name" with the value "domain". Below these fields is a green box titled "Attached USB Printer" containing the text "DESKJET 3820" and a note: "Note: Attached Printer Name cannot be changed it is based on auto-detect." At the bottom of the screen, there are "Back" and "Next" buttons, and a footer bar with the text "USB PrintServer Setup Wizard" and "Model No. PSUS4".

Figure 4-5: Basic Settings

8. The IP Settings screen, Figure 4-6, appears next. If your network uses a router with a DHCP Internet Protocol setting that automatically assigns an IP address, select **Automatically obtain an IP address (DHCP)**. If your network uses a static IP address, select **Set IP configuration manually**, and enter the IP Address, Subnet Mask, and Gateway in the fields provided. Click **Next**.

Click **Back** to return to the previous screen.

9. The next screen that appears is the Set PrintServer's Password screen, shown in Figure 4-7. If you want to change your password, enter your current password in the Current Password screen. Enter the new password in the New Password field, then enter it again in the Verify Password field. Click **Next**.

Click **Back** to return to the previous screen.

LINKSYS®
A Division of Cisco Systems, Inc.

3 IP Settings

Select Automatically obtain an IP address (DHCP) if your network has a router or other DHCP server assigning IP addresses. Select Set IP configuration manually if you are assigning a static IP address to the USB PrintServer.

PrintServer: SC030724

☒ Automatically obtain an IP address (DHCP) **Or** ☐ Set IP configuration manually

IP Address: 0 . 0 . 0 . 0 An IP address must be specified so you can manage the PrintServer from your network.

Subnet Mask: 0 . 0 . 0 . 0 If you are familiar with how your network is set up (DHCP or static IP), you can modify these settings using the PrintServer's web configuration at a later date. If you are unsure, it is better to skip this section by clicking Next.

Gateway: 0 . 0 . 0 . 0

Back | Next

USB PrintServer Setup Wizard Model No. PSUS4

Figure 4-6: IP Settings

LINKSYS®
A Division of Cisco Systems, Inc.

4 Set PrintServer's Password

The USB PrintServer's password can be changed on this screen.

PrintServer: SC030724

Current Password: [masked]

New Password: [masked]

Verify Password: [masked]

Enter a new password in the Password field, Re-enter the new password in the Confirm field.

Note: If you do not wish to change the default password, click Next to continue.

If you keep the USB PrintServer's default settings, then you will use the default password, to access its configuration.

Back | Next

USB PrintServer Setup Wizard Model No. PSUS4

Figure 4-7: Set PrintServer's Password

PrintServer for USB with 4-Port Switch

10. The Confirmation screen appears next. See Figure 4-8. Your old and new settings will be displayed. If you want to make a change, click **No** and you will exit the Setup Wizard; You will have to start the Setup Wizard again. If the settings are correct and you want to save the changes, click **Yes**.
11. The Congratulations screen, shown in Figure 4-9, will appear. The Setup Wizard is complete.

You will need to install the driver next. To continue and install the driver, click **User Install** at the bottom of the Congratulations screen, and go to Chapter 5: Driver Installation.

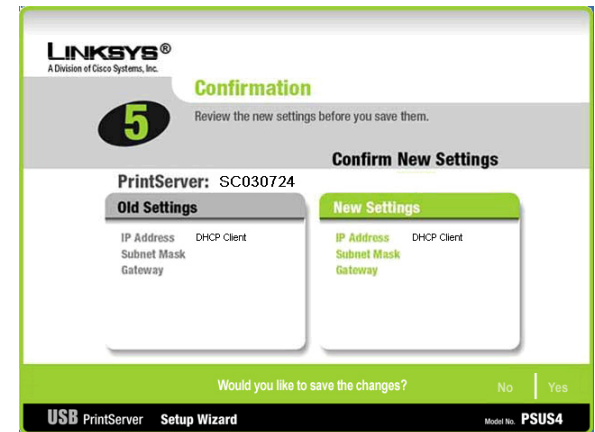


Figure 4-8: Confirmation



Figure 4-9: Congratulations

Chapter 5: Windows Driver Installation

Overview

This section installs the PrintServer's software on your Windows 98, Me, 2000, or XP computers to give them PrintServer printing abilities. The PrintServer is fully compatible with Windows 98, Me, 2000, and XP.

At this point, you must have:

- the PrintServer hardware installed on your network. If not, see Chapter 3: Connecting the PrintServer.
- TCP/IP installed on each of your computers.
- an IP address assigned to each of the computers on your network..
- an IP address assigned to the PrintServer. By default the PrintServer has DHCP enabled. If you need to assign an IP address, go to Chapter 8: Bi-Admin: PrintServer Management.
- This setup should be completed on the network administrator's computer before all other users' computers on the network. The PrintServer's IP address will be assigned in this first installation on the network administrator's computer only, which takes three extra steps.

It is assumed that your CD-ROM drive's letter name is designated as "D". If your CD drive is named another letter, replace all instances of "D" with the appropriate letter.

If you need to install the PrintServer's driver on computers without a CD-ROM drive, you can create a setup disk by using a computer with a CD-ROM drive to copy the contents of D:\Driver\PTP onto a floppy disk.

Installation

1. If you haven't already done so, insert the Setup CD-ROM into the computer's CD-ROM drive. The Setup CD-ROM should run automatically. If it does not, click the Start button and choose Run. In the box that appears, enter D:\setupWizard.exe (if "D" is the letter of your CD-ROM drive).
2. When you see Figure 5-1, click **User Install** to continue. Click **Exit** to end the installation.



HAVE YOU: already set up your printer? Linksys recommends that you set up your printer and install your printer's driver before you install the PrintServer's driver.



Figure 5-1: Welcome

3. The Welcome screen of the driver installation program, Figure 5-2, will appear first. You will need to close any other programs you have open before you continue. Click **Cancel** to quit the setup program, then close the open programs. Click **Next** to continue with the driver installation.

Click **Exit** to end the installation.

4. The next screen to appear is Choose Destination Location, as shown in Figure 5-3. You will be requested to choose the location of where the driver's folder will be installed. If you want the folder to be installed in a different location, click the **Browse** button and select the location. To install the driver in the default location, click **Next** to continue.

Click **Back** to return to the previous screen. Click **Cancel** to end the driver installation.

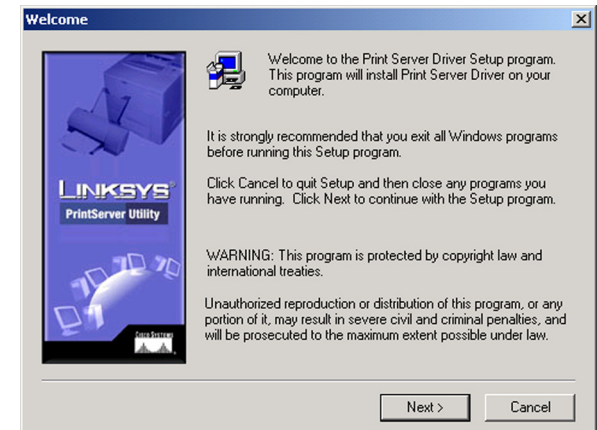


Figure 5-2: Driver's Welcome

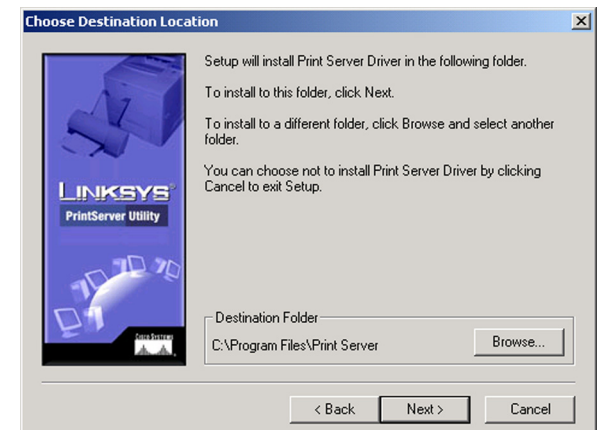


Figure 5-3: Choose Destination Location

5. The next screen to appear is Select Program Folder, shown in Figure 5-4. An icon will be added to the program folder listed. You may change the name for the program folder, if you wish. Click **Next**.

Click **Back** to return to the previous screen. Click **Cancel** to end the driver installation.

6. The next screen that may appear while the driver is being installed, is shown in Figure 5-5. Click **Cancel** to end the driver installation.
7. When the driver is installed, the Setup Complete screen, Figure 5-6, will appear. The Print Driver must still be configured, so make sure that **Configure Print Driver now** is selected. Click **Finish** to continue.

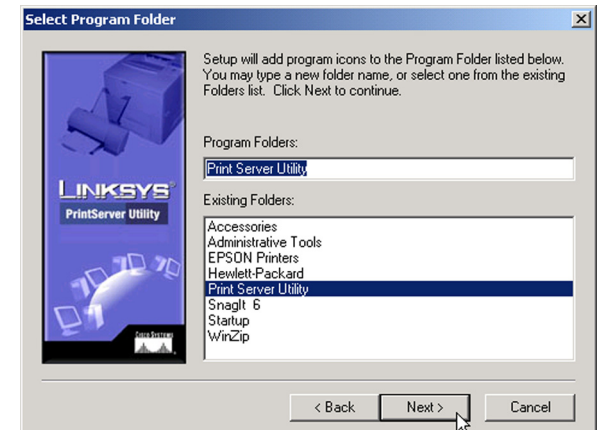


Figure 5-4: Select Program Folder

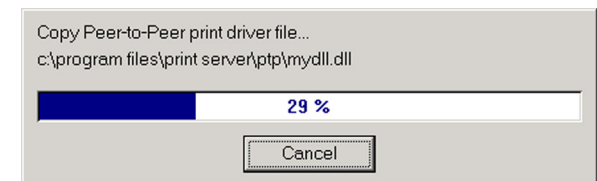


Figure 5-5: Copy Folder

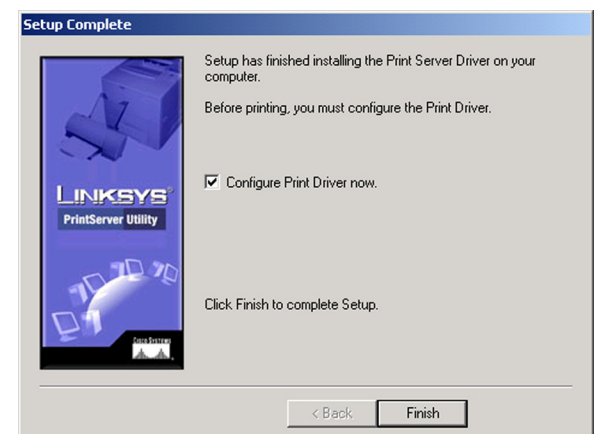


Figure 5-6: Setup Complete

8. The Information screen appears next. See Figure 5-7. Read the information, then click **OK**.
9. The Printer Port Setup screen will appear, as shown in Figure 5-8, and list the PrintServer and the connected printers. Select a printer, then click **Next** to install the printer.

If the PrintServer or printer isn't listed, make sure that the cable connections are good and that the PrintServer and printer are on.

Click **Close** to close the screen. Click **Refresh** to refresh the screen.

10. You will be informed that the PrintServer Port has been added successfully. (Figure 5-9.) Click **OK**.

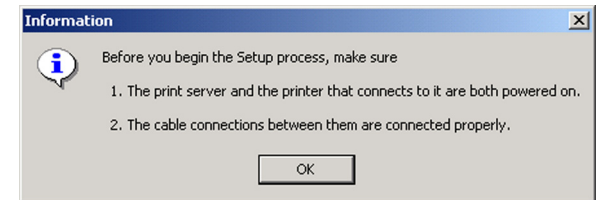


Figure 5-7: TCP/IP

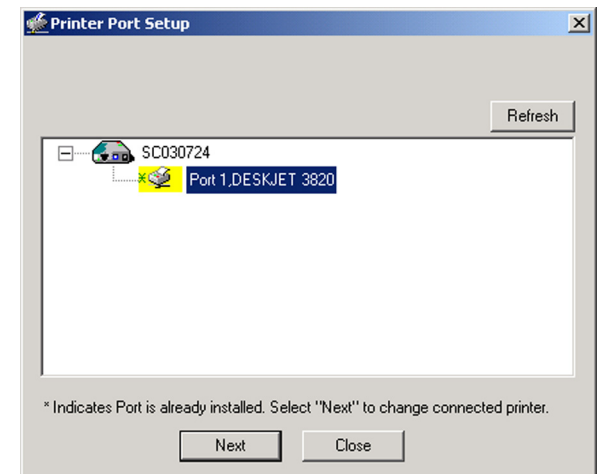


Figure 5-8: IP Address

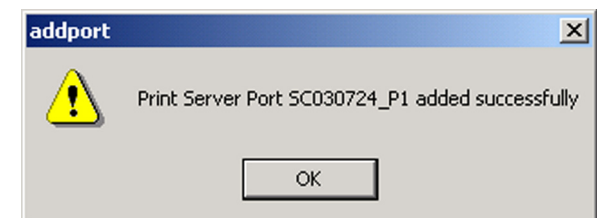


Figure 5-9: Added Successfully

11. The Configure Printer Port screen will appear, as shown in Figure 5-10. Your installed printer will appear in the field. Click the **Connect** button to connect the printer for configuration. To add another printer, click the **Add New Printer** button.

Click **Cancel** to cancel the setup.

12. The driver installation and setup is complete.

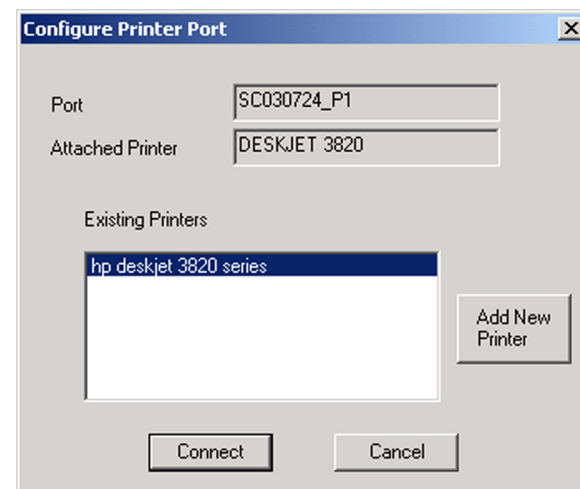


Figure 5-10: Configure Printer Port

Chapter 6: Configuring the PrintServer

Overview

The PrintServer has been designed to be functional right out of the box with the default settings in the Setup Wizard. However, if you'd like to change these settings, you can use the PrintServer's web-based utility. This chapter will describe each web page in the utility and each page's key functions. The utility can be accessed via your web browser through the use of a computer.

To access the web-based utility, launch Internet Explorer or Netscape Navigator, and enter the PrintServer's IP address in the Address field. Then press **Enter**.



NOTE: Use the PrintServer's IP address that you noted during the Setup Wizard. Otherwise, insert the Setup CD-ROM, and when the Welcome screen appears, click on **Setup Wizard**. Follow the instructions until you reach the third screen, (refer to Chapter 4, Figure 4-3) where the IP address will be shown. After you note the IP address, click **Back** until you reach the Welcome screen of the Setup Wizard. Click **Exit**.

There are five main tabs: Setup, Protocol, Printer, Status, and Exit. Additional tabs will be available after you click one of the main tabs.

The Setup Tab

The first screen that appears displays the Setup tab. (See Figure 6-1.) This screen allows you to change the PrintServer's general settings. Change these settings as described here and click the **Save** button to apply your changes or click **Cancel** to cancel your changes.

PSUS4 Device Name. Enter the PrintServer's name in the field. The name can be located on a sticker that is on the bottom of the PrintServer.

Password. To change the PrintServer's password, enter the Current Password in the field. Enter the New Password in the field, then enter the new password again in the Verify Password field.

Protocols. Check the box(es) for AppleTalk or NetBEUI, as they apply to your network.

Change these settings as described here and click the **Save** button to apply your changes or click **Cancel** to cancel your changes.

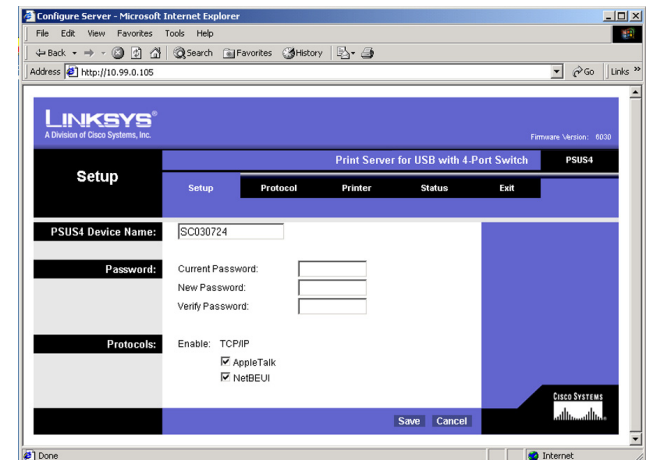


Figure 6-1: Setup

The Protocol Tab - TCP/IP

Click the TCP/IP tab to view or change the TCP/IP values of the PrintServer. (See Figure 6-2.)

IP Address. If you are using DHCP to assign IP addresses, select **Obtain an IP Address Automatically**. By default, Obtain an IP Address Automatically is enabled. If you need to assign the PrintServer a Fixed IP Address (also known as Static IP Address), select **Use the Following IP Address**, and enter the appropriate values under IP Address, Subnet Mask, and Gateway. To find your router's IP address, consult your router's documentation. The Device IP Address and Subnet Mask are the same as those of any PC connected to the network. If you change the PrintServer's IP address, make sure you that you reconnect to the PrintServer using that new IP address. Otherwise, you will not be communicating with the PrintServer. The Gateway IP Address is not necessary for using the PrintServer.

Connection. You can set how long you want the PrintServer to delay between attempting connections to the network. You can also specify the number of times that the PrintServer will attempt to make a connection. Enter your chosen values in the fields provided.

Change these settings as described here and click the **Save** button to apply your changes or click **Cancel** to cancel your changes.

The Protocol Tab - Apple Talk

AppleTalk is a network communications protocol that allows computers to talk to each other using Ethernet. Typically only Macintoshes use AppleTalk, although other platforms can be made to use it with extra software. (See Figure 6-3.)

Communication. The Printer Object type can be obtained from the manufacturer of the printer. Enter the type of printer in the field. For each printer connected to the PrintServer, you will choose the Communications Protocol that allows the devices on the network to communicate. Select the type of Communication Protocol you will use, **ASCII** or **Binary** for each printer, according to the recommendation of the printer's manufacturer.

Change these settings as described here and click the **Save** button to apply your changes or click **Cancel** to cancel your changes.

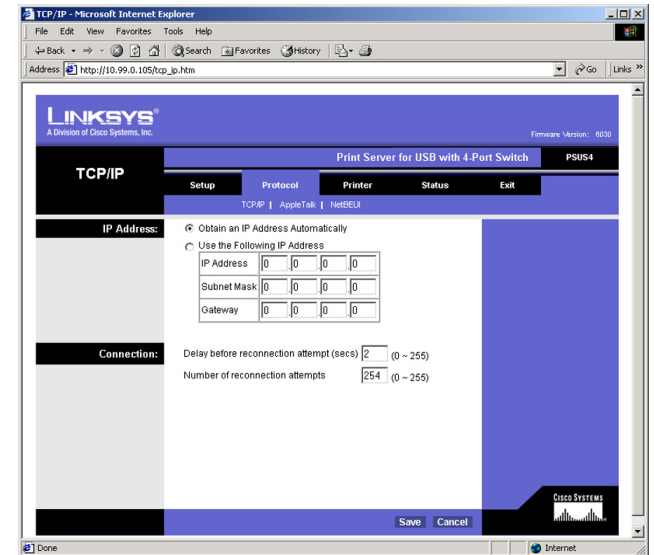


Figure 6-2: TCP/IP

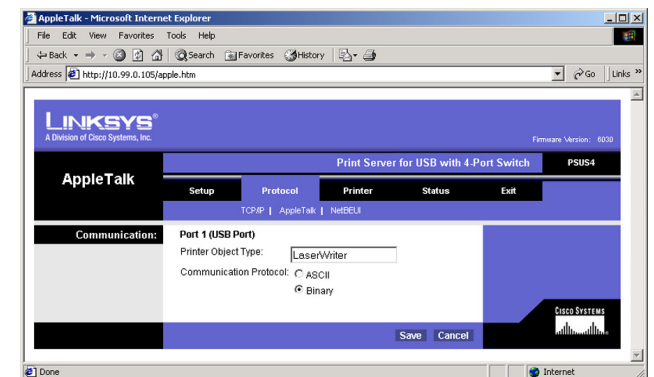


Figure 6-3: Apple Talk

The Protocol Tab - NetBEUI

NetBEUI connection settings of the PrintServer are available on this tab. (See Figure 6-4.)

Domain Name. Enter the name of the domain that you want the PrintServer associated with in the Domain Name field.

If you are unsure of the Domain Name, you can find it out by looking on any computer already on the network. In Windows 98, right click Network Neighborhood and select Properties. Under the Identification tab, there will be listed that computer's name, and the Domain to which it is connected. For Windows Me and 2000, right click My Network Places. In Windows Me, choose Properties from the menu that appears. In Windows 2000 or XP, choose Properties from the menu that appears. Then, right click Local Area Connection and choose Properties. The Domain name will appear. If you want the PrintServer to be connected to that same Domain, enter that Domain name here. If no Domain name exists there, you will use the Workgroup name from that window.

Options. You can specify the Response Time that you prefer for the PrintServer. This is the amount of time (measured in seconds) that the PrintServer will wait for a response from the network before “timing out.”

You also have the option to Abort Print Job if Error. Selecting Yes here will terminate the printing if there is an error of any kind. If you select No, print jobs that have errors will be sent to the printer, but might not print properly.

Change these settings as described here and click the **Save** button to apply your changes or click **Cancel** to cancel your changes.

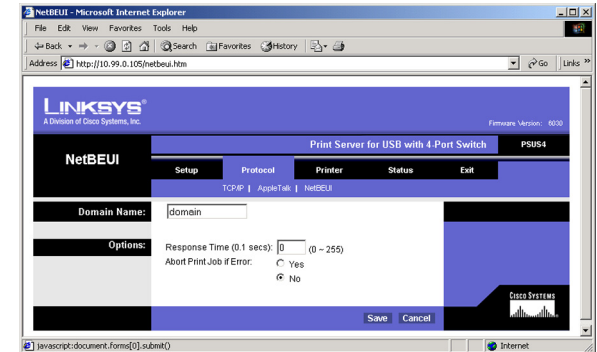


Figure 6-4: NetBEUI

The Printer Tab - Internet Printing

Internet Printing allows you to automatically print any e-mails that are sent to a specific e-mail account on your network. This is especially useful for printing information when you are not connected to the network. You can print from anywhere that you can access e-mail. (See Figure 6-5.)

Mail Server. Enter the address of your mail server in the Mail Server IP Address. (This value must be a fixed IP address.) Enter the Account Name and Account Password next. Enter the password again in the Verify Password field. Then, enter the time interval for the PrintServer to check for e-mail to be printed, in hours and minutes in the Check Mail every: field. You may also specify an e-mail address to which mails that cannot be printed are routed; this is useful for both graphic-intensive e-mails and for troubleshooting purposes. Enter this e-mail address in the Redirect unprintable Mail to: field.

Printer. Enter the Printer Model in the field provided. You can find this in the Device Manager. Then choose the Printer Port from the drop down menu.

Options. Place a check mark next to your preferences. Select **Print every E-Mail**, **Print Banner Page** (default), or **Mail response when printed**.

Change these settings as described here and click the **Save** button to apply your changes or click **Cancel** to cancel your changes.

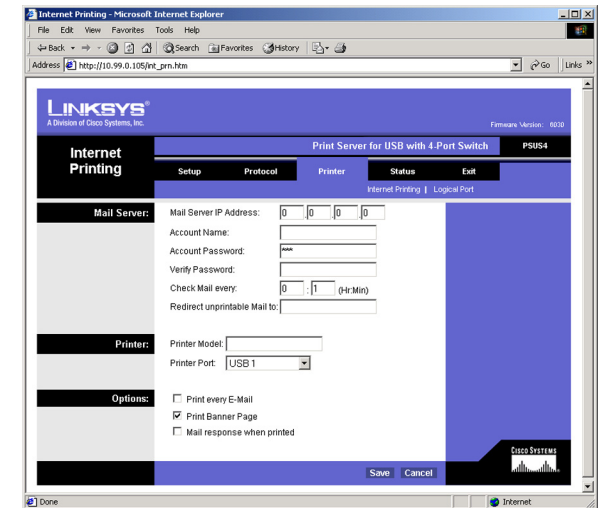


Figure 6-5: Internet Printing

The Printer Tab - Logical Port

The Logical Printers tab contains the logical printer settings of the PrintServer. Select from the following fields for each Logical Printer. (See Figure 6-6.)

Select Printer. Select the number (1-3) from the drop-down menu of Logical Printer Port No: you wish to configure. Click the **Get Data** button to update the display with the current data for the selected logical printer.

Details

- **Pre-string (Hex).** Enter the printer control string (in hexadecimal characters) to be sent to the printer before each print job. This string cannot exceed 30 characters.
- **Post String (Hex).** Enter the printer control string (in hexadecimal characters) to be sent to the printer after each print job. This string cannot exceed 30 characters.
- **Convert LF to CR+LF.** If checked, LF (line feed) characters are changed to CR+LF (carriage return + line feed).

Change these settings as described here and click the **Save** button to apply your changes or click **Cancel** to cancel your changes.

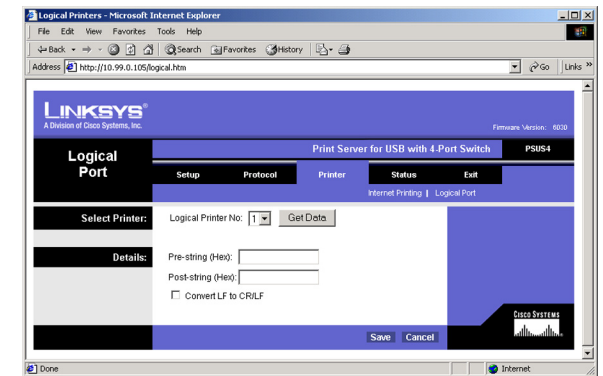


Figure 6-6: Logical Port

The Status Tab - Device

The Device tab allows you to view information about the PrintServer. No values can be changed on this screen. This screen is for information only. (See Figure 6-7.)

Clicking the **Refresh** button causes the PrintServer to retrieve this information again.

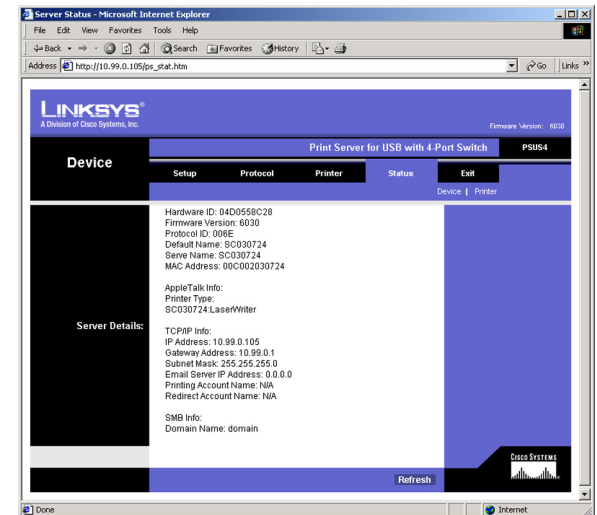


Figure 6-7: Device Status

The Status Tab - Printer

The Printer tab allows you to view information about the Printer. No values can be changed on this screen. This screen is for information only. (See Figure 6-8.)

Click the **Print Test Page** button to print a test page.

Clicking the **Refresh** button causes the PrintServer to retrieve this information again.

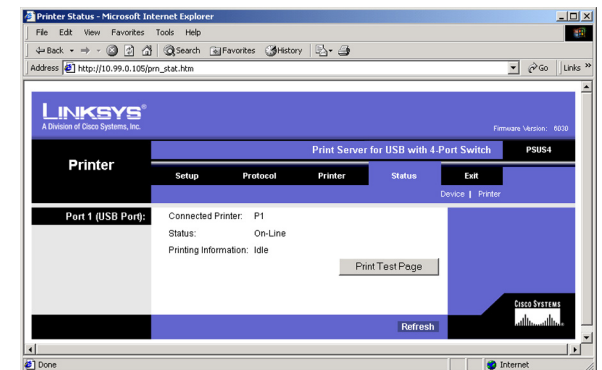


Figure 6-8: Router IP

The Exit Tab

This tab is used exclusively for exiting the Web-based Utility. (See Figure 6-9.)

Select the **Exit** tab and the screen in Figure 6-9 will appear. Click the **Yes** button if you want to exit the Utility. Click **No** if you don't want to exit the Utility.

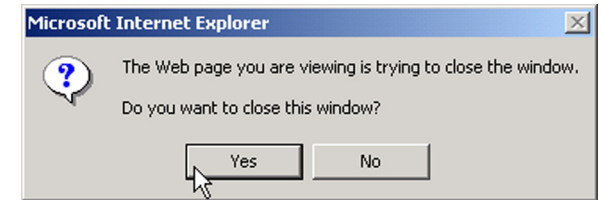


Figure 6-9: Exit

Chapter 7: Internet Printing Protocol

Overview

Internet Printing Protocol (IPP) is a new standards-based system to allow remote printing from a PC to any accessible printer. Normally, the printer will be attached to a computer or other device that functions as an IPP Server. For client PCs, it is necessary to install a compatible IPP Client program. The Client must also know the IP Address or URL of the IPP Server.

The PrintServer contains the necessary firmware to act as an IPP Server. No additional configuration is necessary. However, the following requirements must be met:

- The PrintServer must have a valid IP Address. For printing via the Internet, the PrintServer's IP Address must be external (allocated by your ISP), rather than an IP Address on your local LAN.
- Any Router, Gateway, or Firewall linking your LAN to the Internet must NOT block the IPP protocol. (IPP Protocol uses Port Services 631/TCP)
- You must advise clients of the correct URL or IP Address of the IPP Server. To use a URL rather than an IP Address, you need to register the domain name for the URL.
- Unless clients are using Windows 2000, you must provide your clients with the supplied IPP Client software. If it is not convenient to provide the CD-ROM, supply the setup.exe file, located in the IPP folder.

Windows IPP Client Setup

Installing using setup.exe

1. Run this program, located at d:\driver\ipp\setup.exe, to unzip the included files.
2. The IPP Setup program will then run.
3. Follow the prompts to complete the installation.

IPP Client Configuration for Windows 98, Me, 2000, and XP

1. Run the Add IPP Port program entry created by the installation. A screen like the one shown in Figure 8-1 will be displayed.

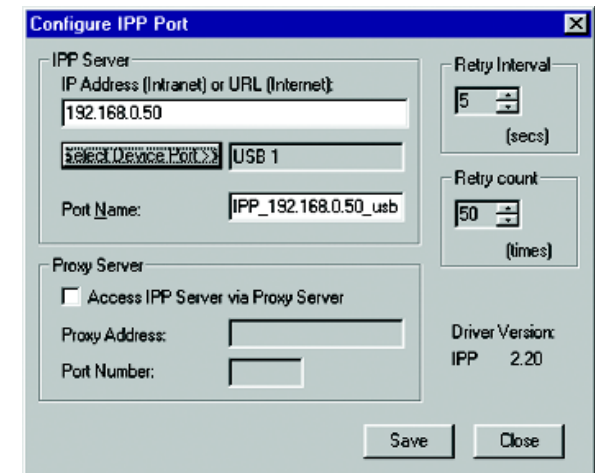


Figure 7-1: Configure IPP Port

2. If Internet access from your location is via a Proxy Server, check Access IPP Server via Proxy Server, and enter details of your Proxy Server. (This will be the same as your Browser configuration.)
3. Enter the IP Address or URL of the IPP Server.
4. Click Select Device Port to view the available ports on the IPP Server, and select the appropriate port. A connection to the IPP Server will be established at this time.



NOTE: Verify that USB 1 appears in the field beside the Select Device Port button. If it does not, click the Select Device Port button, and select USB 1.

5. Click Save to create the IPP port on your system. You will see a message confirming that the port has been created and then Figure 7-2.
6. Perform one of these steps. Select an existing printer to use the new port, and click OK.

OR

Click the Add New Printer button to create a new printer to use the IPP port. This will start the Add Printer Wizard. Follow the prompts to complete the process. Make sure that the new printer uses the IPP port.

Installation is now complete.

- To create additional IPP ports, repeat the entire procedure.
- The Proxy Server and other options are set individually for each IPP Port.

Changing the IPP Port Settings

After the IPP port is created, you can reach the Configure IPP Port screen by performing these steps:

1. Open the Printers folder (Start => Settings => Printers).
2. Right-click the IPP Printer and select Properties.
3. Click the Port Settings or Configure Port button (Details or Port tab, depending on your version of Windows). The Configure IPP Port screen (shown in Figure 7-3) will appear.

There are two settings—Retry Interval and Retry Count—that can be adjusted if you have problems connecting to the IPP Server.



NOTE: Verify that USB 1 appears in the field beside the Select Device Port button. If it does not, click the Select Device Port button, and select USB 1.

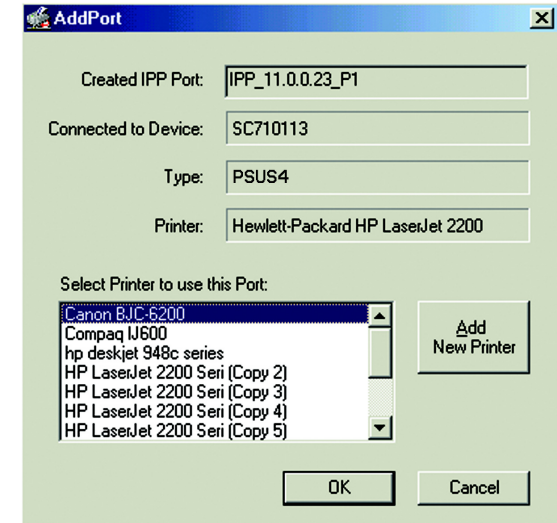


Figure 7-2: AddPort

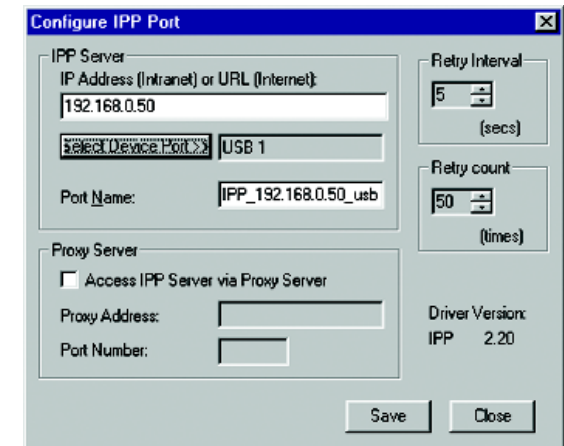


Figure 7-3: Configure IPP Port

- Retry Interval sets the time interval (in seconds) between connection attempts. Increase this number if you have a poor connection, or the remote server is very busy.
- Retry Count sets how many connection attempts will be made. Increase this number if you have a poor connection, or the remote server is very busy.

IPP Client Setup for Windows 2000 and XP

Windows 2000 and XP have their own IPP Client, and there is no need to install the supplied IPP Client Software. To use this IPP Client with the PrintServer, follow this procedure:

1. Start the Add Printer Wizard.
2. Select Network Printer and click Next to see the Locate your Printer screen, as shown in Figure 7-4.
3. Select Connect to a printer on the Internet or on your intranet, and enter the URL of the IPP Server as follows, where ip_address represents the IP Address of the IPP Server, and 631 represents the port number.

Port 1 ip_address:631/ipp/P1



NOTE: These entries are case sensitive. They must be entered as shown, with “ipp” in lowercas, and P1 in UPPERcase.

4. If the connection can be established, and the printer on that port is online, the dialog box shown in Figure 7-5 will be displayed. This screen notifies you that the printer driver is not installed. Click the OK button.
5. Select the printer manufacturer and model to match the printer connected to the port on the IPP Server.
6. Click Next and complete the Wizard.

The IPP printer is now ready for use.

Using IPP Printers

The IPP Printer can be selected and used like any other Windows printer. If the IPP Server is not on your network, your Internet connection needs to be active.

If you wish to check the availability of the remote IPP Server, you can use the Query IPP Printer program installed with Add IPP Port.

An IPP Server may be unavailable for any of the following reasons:

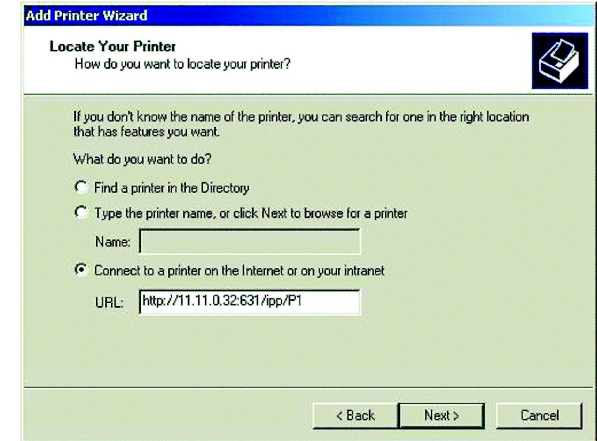


Figure 7-4: Locate Your Printer

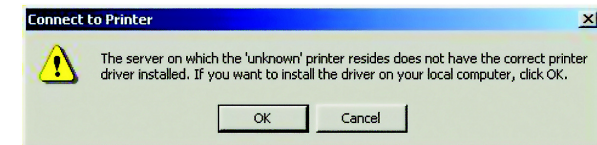


Figure 7-5: Connect to Printer

PrintServer for USB with 4-Port Switch

- It is powered off.
- A printer problem has caused the IPP Server to cease responding, and a restart (reboot) is required.
- The Server's IP Address has changed.
- The Internet connection for the IPP Server is down.
- Network congestion causes the connection attempt to time out.

If using the supplied IPP Client software, there are two settings—Retry Interval and Retry Count—that can be adjusted if you have problems connecting to the IPP Server.

See the previous section, Changing the IPP Port Settings, for details.

Chapter 8: Bi-Admin Management

Overview

The PrintServer is managed by a utility program called Bi-Admin on the PrintServer's Setup CD. Fully compatible with Windows 98, Me, 2000, and XP, Bi-Admin allows you to change the PrintServer's internal settings, check on the unit's status, and perform basic diagnostic tests. Note that the Bi-Admin program must be installed only on the network administrator's computer. First, you will install Bi-Admin on your computer. Then, you will be able to use the management utility.

Bi-Admin Installation

1. If you haven't already done so, insert the Setup CD-ROM into the computer's CD-ROM drive. The Setup CD-ROM should run automatically. If it does not, click the Start button and choose Run. In the box that appears, enter D:\setupWizard.exe (if "D" is the letter of your CD-ROM drive).
2. When you see Figure 8-1, click **Bi-Admin Install** to continue. Click **Exit** to end the installation.
3. The Welcome screen of the Bi-Admin Setup program, Figure 8-2, will appear first. You will need to close any other programs you have open before you continue. Click **Cancel** to quit the setup program, then close the open programs. Click **Next** to continue with the Bi-Admin installation.



Figure 8-1: Welcome

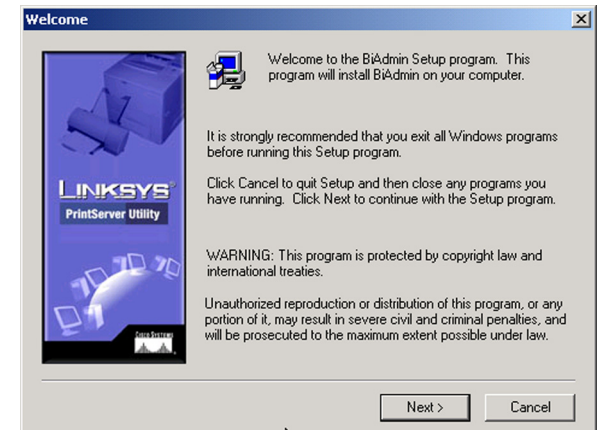


Figure 8-2: Bi-Admin Setup Welcome

4. The next screen to appear is Choose Destination Location, as shown in Figure 8-3. You will be requested to choose the location of where the Bi-Admin folder will be installed. If you want the folder to be installed in a different location, click the **Browse** button and select the location. To install the Bi-Admin folder in the default location, click **Next** to continue.

Click **Back** to return to the previous screen. Click **Cancel** to end the Bi-Admin installation.

5. The next screen to appear is Select Program Folder, shown in Figure 8-4. An icon will be added to the program folder listed. You may change the name for the program folder, if you wish. Click **Next**.

Click **Back** to return to the previous screen. Click **Cancel** to end the Bi-Admin installation.

6. When the Bi-Admin is installed, the Setup Complete screen, Figure 8-5, will appear. Click **Finish** to continue.

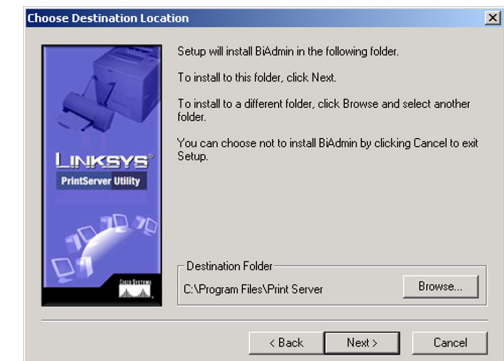


Figure 8-3: Choose Destination Location

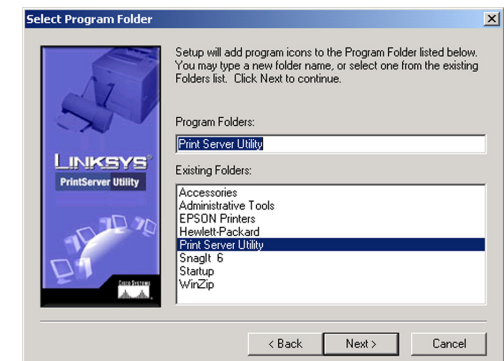


Figure 8-4: Select Program Folder

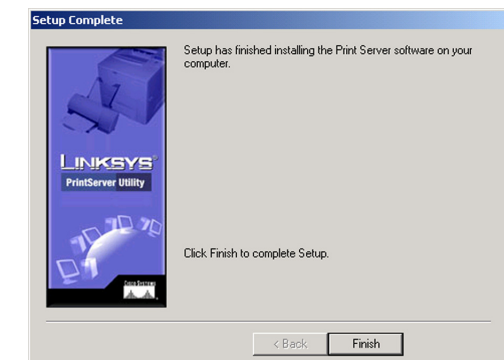


Figure 8-5: Setup Complete

Starting the Bi-Admin Management Utility

1. To start the Bi-Admin program, click on **Start, Programs, Print Server Utility**, and then **Bi-Admin Management Utility**, as shown in Figure 8-6. If the Bi-Admin Management Utility icon has been created, you can just double-click on it instead. You can drag the shortcut icon onto your Desktop for easy access to the Bi-Admin Management Utility.
2. When the Bi-Admin Management Utility appears, it will ask for the Connected Protocol. (See Figure 8-7.) Make sure the box next to TCP/IP is checked. Click the **OK** button.
3. Then the Bi-Admin Management Utility will automatically scan the network for the USB PrintServer. (See Figure 8-8.)

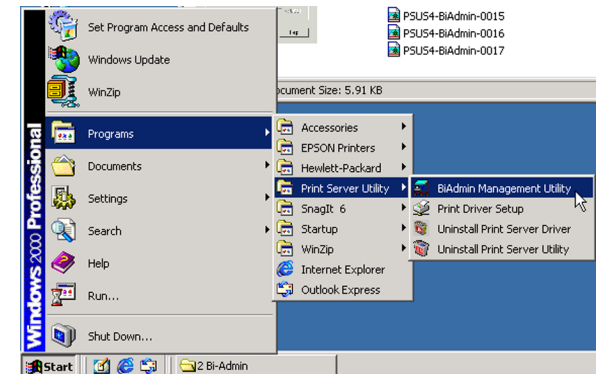


Figure 8-6: Connected Protocol

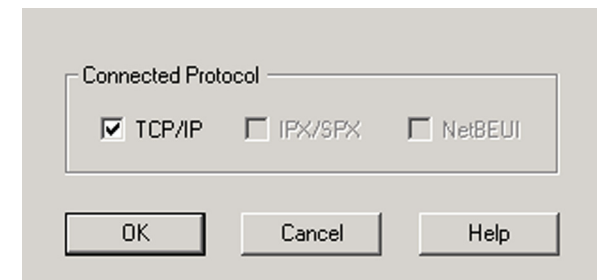


Figure 8-7: Searching for Device

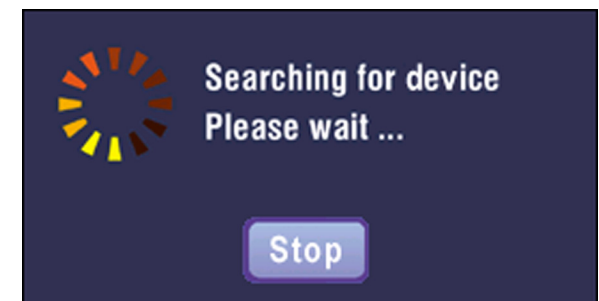


Figure 8-8: Setup Complete

The Bi-Admin Management Utility

The Bi-Admin Management Utility screen will appear next. Any hardware found on the network will appear on the left-hand side of the screen, as shown in Figure 8-9. The Utility can be managed from this screen. The menu and icon options will be explained below:

Menu Options

Main. The options are Device Status, Printer Status, Configuration, Upgrade, Refresh, and Exit. These options are also the same as the icons that are displayed below the menu options (viewed from left to right), and are described below.

- **Device Status.** This option allows you to view all of the device settings, and optionally save the device settings to a file, or restore a previously saved file to the device.

If you click **Device Status**, the screen in Figure 8-10 appears. A list of the PrintServer's device settings is displayed that contains the Hardware ID, Firmware version, Protocol ID, Default Name, and Server Name. To save the information in a txt. file, click the **Save to file** button.

To choose a different device that you configured, click the **Open** button. You may then browse for your file, select it, then click **Open**. The contents of the file will display on the right-hand side of the screen. To save the file to the PrintServer, click **Restore to Device**.

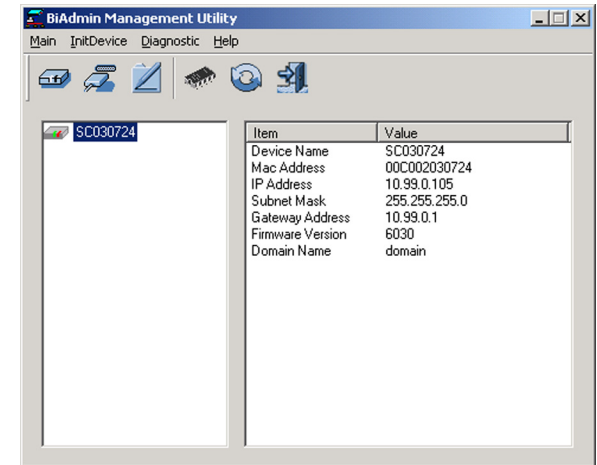


Figure 8-9: Bi-Admin Management Utility

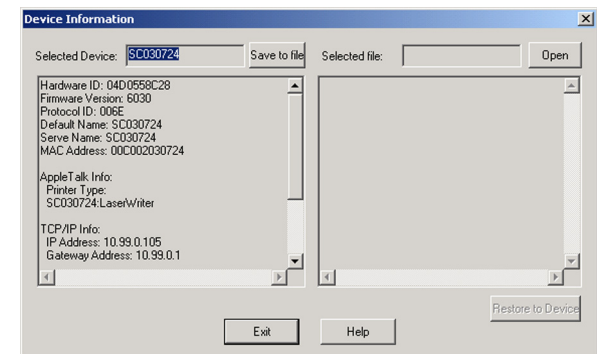


Figure 8-10: Device Information

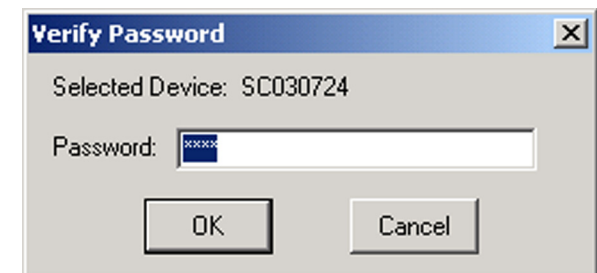


Figure 8-11: Verify Password

- **Printer Status.** This option allows you to view the printer status, and set port and printer parameters.

If you click this option, a Verify Password screen will appear, as shown in Figure 8-11. Make sure that you enter the password in the field before you click OK or an Incorrect Password message will appear. If the message appears, then click **OK**, enter the correct password in the field, and click **OK** again.

After the password is successfully entered, the Printer Status screen will appear, as shown in Figure 8-12. The Device Name will be displayed and USB Printer Port will be highlighted. The status information for the port will be displayed.

Click the Back button to return to the Bi-Admin Management Utility screen. Click **Refresh** to refresh the screen.

If the printer is Bi-directional, and is not busy, the **Printer Configuration** button will appear, as shown in Figure 8-13. If the items are not read only, you can change the Environmental Variable and Variable Value items based on the options of your printer.

For more information, click the **Help** button.

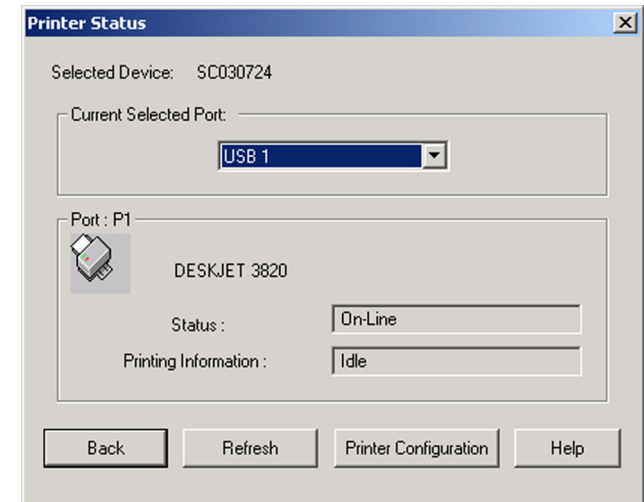


Figure 8-12: Printer Status

HP LaserJet 4 Plus			
	Environment Variable	Variable Value	Read Only
11	MANUALFEED	OFF	No
12	MPTRAY	FIRST	Yes
13	ORIENTATION	PORTRAIT	No
14	PAGEPROTECT	AUTO	No
15	PAPER	A4	No
16	PERSONALITY	AUTO	No
17	RESOLUTION	600	No
18	RET	MEDIUM	No
19	TIMEOUT	300	No
20	FONTSOURCE	1	No

Figure 8-13: Printer Configuration

- **Configuration.** You may configure the PrintServer with this option. If you click this option, a Verify Password screen will appear, as shown in Figure 8-14. Make sure that you enter the password in the field before you click OK or an Incorrect Password message will appear. If the message appears, click OK, enter the correct password in the field, and click OK again.

After the password is successfully entered, the Configuration screen will appear, as shown in Figure 8-15. The Configuration screen displays six tabs: System, TCP/IP, Apple Talk, NETBEUI, Internet Printing, and Port. The tabs will be described below.

System

Enter the Device Name in the field. Enter any comments in the Comment field. To change the password, select Change Device Password, enter the new password in the Password field, then re-enter the password in the Confirm Password field. Select the protocol you want to use for your network: TCP/IP, Apple Talk, NetBEUI, IPX/SPX.

Click the **Get Defaults** button if you want to return the settings to the default settings.

When finished making your changes on this tab, click the **OK** button to save these changes, or click the **Cancel** button to undo your changes. For more information, click the **Help** button.

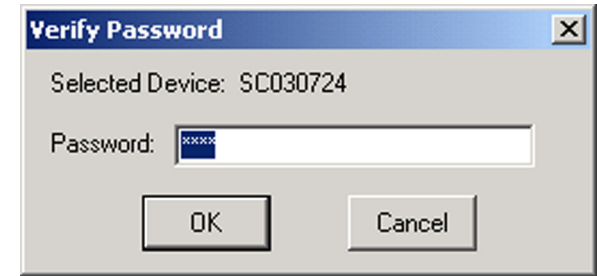


Figure 8-14: Verify Password

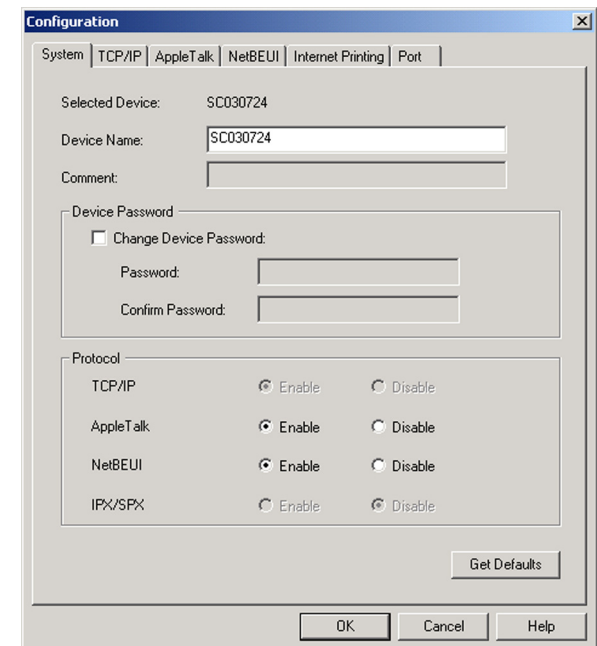


Figure 8-15: Configuration - System

TCP/IP

If you are using DHCP to assign IP addresses, select Dynamic IP Address (DHCP) . (See Figure 8-16.) By default, Dynamic IP Address (DHCP) is enabled. If you need to assign the PrintServer a Fixed IP Address (also known as Static IP Address), select Fixed IP Address, (Figure 8-17) and enter the appropriate values under IP Address, Subnet Mask, and Gateway. To find your router's IP address, consult your router's documentation. The IP Address and Subnet Mask are the same as those of any PC connected to the network. If you change the PrintServer's IP address, make sure you that you reconnect to the PrintServer using that new IP address. Otherwise, you will not be communicating with the PrintServer. The Gateway IP Address is not necessary for using the PrintServer.

Click the **Get Defaults** button if you want to return the settings to the default settings.

When finished making your changes on this tab, click the **OK** button to save these changes, or click the **Cancel** button to undo your changes. For more information, click the **Help** button.

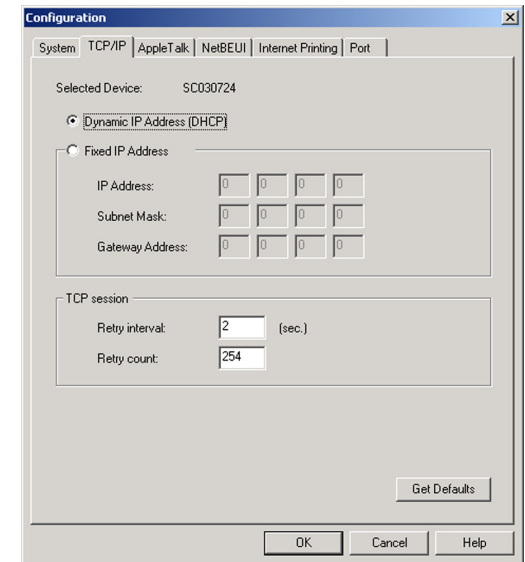


Figure 8-16: Dynamic IP Address (DHCP)

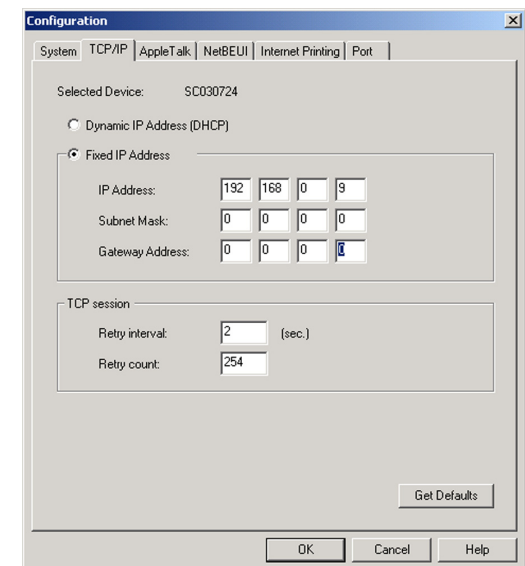


Figure 8-17: Fixed IP Address

Apple Talk (Figure 8-18)

AppleTalk is a network communications protocol that allows computers to talk to each other using Ethernet. Typically only Macintoshes use AppleTalk, although other platforms can be made to use it with extra software. Enter the Zone Name in the field. Select the port number from the drop-down menu. The Printer Type can be obtained from the manufacturer of the printer. Enter the type of printer in the field. For each printer connected to the PrintServer, you will choose the Communications Protocol that allows the devices on the network to communicate. Select the type of Communication Protocol you will use, ASCII or Binary for each printer, according to the recommendation of the printer's manufacturer.

Click the **Get Defaults** button if you want to return the settings to the default settings.

When finished making your changes on this tab, click the **OK** button to save these changes, or click the **Cancel** button to undo your changes. For more information, click the **Help** button.

NetBEUI (Figure 8-19)

Enter the name of the domain that you want the PrintServer associated with in the Domain Name field. If you are unsure of the Domain Name, you can find it out by looking on any computer already on the network. In Windows 98, right click Network Neighborhood and select Properties. Under the Identification tab, there will be listed that computer's name, and the Domain to which it is connected. For Windows Me and 2000, right click My Network Places. In Windows Me, choose Properties from the menu that appears. In Windows 2000 or XP, choose Properties from the menu that appears. Then, right click Local Area Connection and choose Properties. The Domain name will appear. If you want the PrintServer to be connected to that same Domain, enter that Domain name here. If no Domain name exists there, you will use the Workgroup name from that window. You can specify the Response Time that you prefer for the PrintServer. This is the amount of time (measured in seconds) that the PrintServer will wait for a response from the network before "timing out." You also have the option to Abort Print Job if Error. Selecting Yes here will terminate the printing if there is an error of any kind. If you select No, print jobs that have errors will be sent to the printer, but might not print properly.

Click the **Get Defaults** button if you want to return the settings to the default settings.

When finished making your changes on this tab, click the **OK** button to save these changes, or click the **Cancel** button to undo your changes. For more information, click the **Help** button.

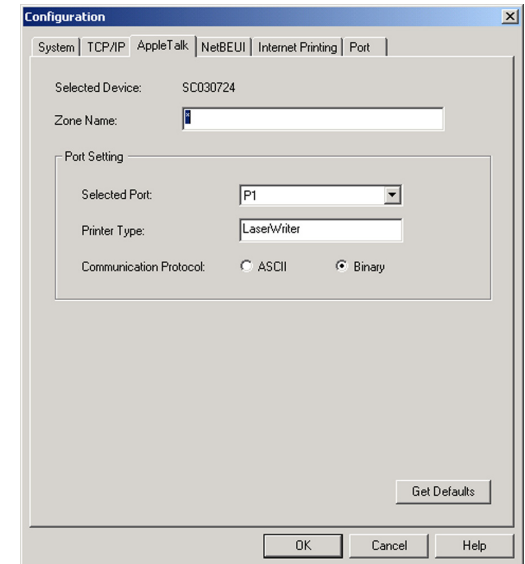


Figure 8-18: Apple Talk

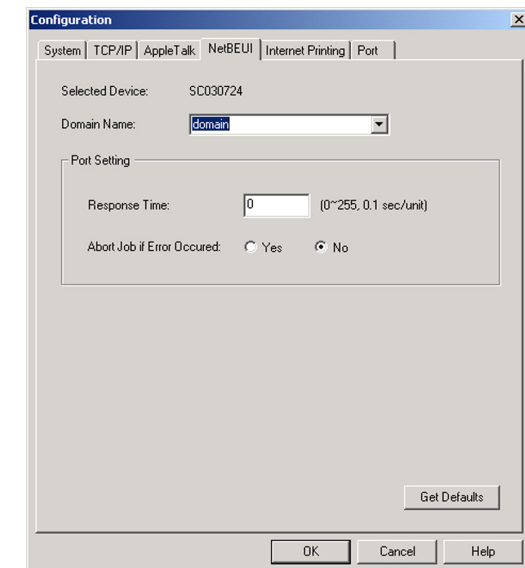


Figure 8-19: NetBEUI

Internet Printing (Figure 8-20)

Enter the address of your mail server in the Mail Server IP Address fields. (This value must be a fixed IP address.) Enter the Mail Account name and Password next. Enter the password again in the Confirm Password field. Then, enter the time interval for the PrintServer to check for e-mail to be printed, in hours and minutes in the Check Mail Interval: field. You may also specify an e-mail address to which mails that cannot be printed are routed; this is useful for both graphic-intensive e-mails and for troubleshooting purposes. Enter this e-mail address in the Redirect Mail Account: field. Select the Default Printer Port from the drop down menu. Enter the Printer Model in the field provided. You can find this in the Device Manager. Place a check mark next to your preferences for options. Select **Print every Mail**, **Banner Printing** (default), or **Mail response when Printed**.

Click the **Get Defaults** button if you want to return the settings to the default settings.

When finished making your changes on this tab, click the **OK** button to save these changes, or click the **Cancel** button to undo your changes. For more information, click the **Help** button.

Port (Figure 8-21)

Select the number of the Selected Physical Port from the drop-down menu. Select the Handshake Signal: **Busy Only** or **Busy & Ack**. Select the Printer Type: **High Speed** or **Low Speed**. Select the Selected Logical Port from the drop-down menu, then the physical port you want to map it to from the drop-down menu for Map to Physical Port. If you select Yes for Convert LF to LF+CR, the LF (line feed) characters are changed to LF+CR (line feed +carriage return). In the field for Prefix of Job, enter the printer control string (in hexadecimal characters) to be sent to the printer before each print job. This string cannot exceed 30 characters. In the field for Suffix of Job, enter the printer control string (in hexadecimal characters) to be sent to the printer after each print job. This string cannot exceed 30 characters.

Click the **Get Defaults** button if you want to return the settings to the default settings.

When finished making your changes on this tab, click the **OK** button to save these changes, or click the **Cancel** button to undo your changes. For more information, click the **Help** button.

- **Upgrade.** You may use this option to upgrade the firmware of the PrintServer.
- **Refresh.** This option allows you to refresh the device list after you change the name or IP Address of a device. The screen does not refresh automatically.
- **Exit.** This option allows you to exit the program.

InitDevice. The available options are Reset Device, Restore to Factory Default, Attached Remote, and Connected Protocol.

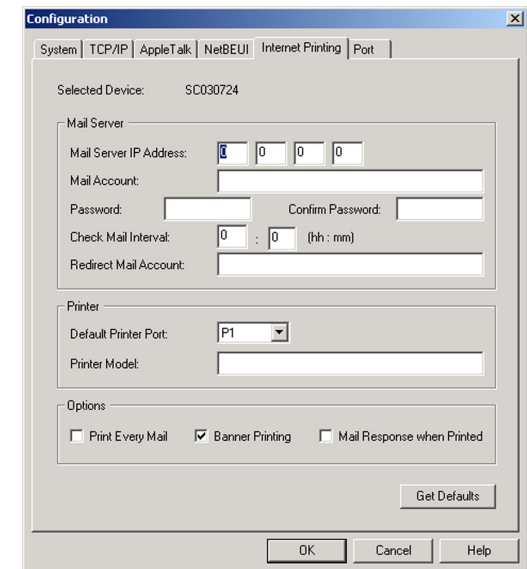


Figure 8-20: Internet Printing

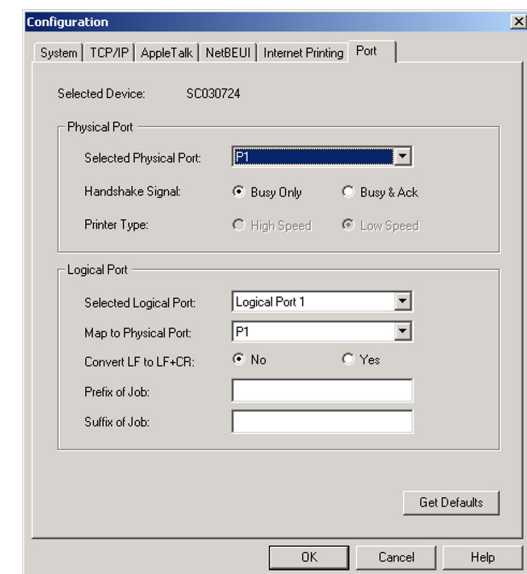


Figure 8-21: Port

PrintServer for USB with 4-Port Switch

If you click **Attached Remote**, the screen in Figure 8-22 appears. To add a cross segment print server, enter the IP address in the fields, and click the **Set** button.

Click **Cancel** to undo any changes. For more information, click the **Help** button.

Diagnostic. Diagnostic allows you to Print Test Page.

Help. The two options are Help Topics and About Bi-Admin. These help files offer extensive advice and details about all of the PrintServer's functions and capabilities.

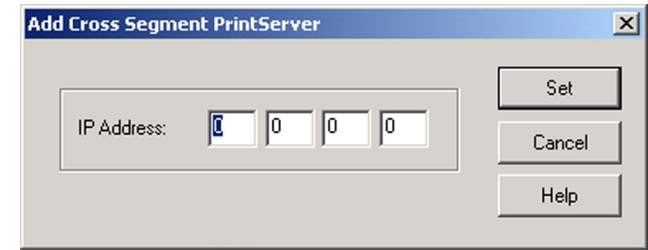


Figure 8-22: Attached Remote

Appendix A: Troubleshooting

This appendix consists of “Common Problems and Solutions”. Provided are possible solutions to problems that may occur during the installation and operation of the PrintServer. Read the descriptions below to help you solve your problems. If you can’t find an answer here, check the Linksys website at www.linksys.com.

Common Problems and Solutions

If the PrintServer is not working correctly, follow the advice in this chapter. If you have trouble printing, see Chapter 3 first, and then go to Chapter 8. If this Troubleshooting section does not resolve your problem, please see Appendix I to contact Technical Support.

1. *All the LEDs on the front of the PrintServer are off.*

Check the power supply and the power connection.

2. *The PrintServer’s Status LED stays lit continuously.*

Reset the Wireless-Ready PrintServer by unplugging the power supply and plugging it back in or pressing the Reset button on the back of the PrintServer.

3. *I am using DHCP, and the PrintServer gets an IP Address conflict involving the PrintServer.*

If the PrintServer is left on when the DHCP server is turned off, the PrintServer will retain its IP Address without informing the DHCP server. Reset the PrintServer so it will obtain a new IP Address. This problem also arises if you assigned a static IP Address within the range used by the DHCP server. If so, use another address NOT within the range used by the DHCP server.

4. *The PrintServer’s LAN LED is not lighting up.*

Check your cabling and make sure that the Link LED on your hub or switch is lit up.

5. *A printer connected to the PrintServer cannot print or prints garbage.*

Check the following:

1. Cable connection between the PrintServer and printer.
2. The printer driver in the application program or Windows matches the printer.
3. Cabling distance is too long if it exceeds 10 feet.

6. *The Configuration button on the Printer Status screen in Bi-Admin is grayed out, even though my printer is bi-directional.*

The button is unavailable until the printer has finished its print jobs and sits idle.

7. *To start over, I need to set the PrintServer to factory default.*

Unplug the power to the PrintServer. Press in the **Reset** button and plug in the power and continue to hold for 10 seconds. This will return the password and other settings on the PrintServer to the factory default settings. In other words, the PrintServer will revert to its original factory configuration.

8. *I need to upgrade the firmware.*

In order to upgrade the firmware with the latest features, you need to go to the Linksys website and download the latest firmware at www.linksys.com.

- Follow these steps:
 1. Go to the Linksys website at <http://www.linksys.com> and download the latest firmware.
 2. To upgrade the firmware, follow the steps in “Appendix C: Upgrading Firmware.”

Appendix B: About Bi-Directional Printing

Normal printing only sends print signals from a PC to a printer. Bi-directional printing, also called bitronic printing, refers to a printer's ability to do just the opposite—talk back to a PC to notify it of a print job status, paper jams, etc. This two-way communication technology can be found in HP, IBM, Panasonic, and other laser or color printers where close contact between the PC and printer is key. In color printing, for example, the printer “informs” the PC of its constant status in order to mix color inks correctly for optimal quality output.

Bi-directional communication, communication from a printer to a PC, is normally handled by a combination of the printer hardware and special software on your computer. Bi-directional printers generally have highly advanced parallel interfaces. These printers often require special parallel ports in order to take full advantage of their features.

Using a bi-directional printer on a network poses unique challenges. Unlike a direct PC-to-printer connection in which a bi-directional printer can easily send its signals back to the host PC through the computer's parallel port (which is normally located only a few feet away from the printer), a networked printer faces the problem of having to route messages bound for a particular PC through a large array of hubs, switches, file servers, and computers. Unfortunately, most printers are not equipped to handle the complexities of printer-to-PC communication across a network. That does not mean that they can't be used on a network, however.

Linksys designed the PrintServers to function with both regular as well as bi-directional printers. Standard print servers cannot work with bi-directional printers, but the PrintServer features a custom design to support both parallel as well as bi-directional parallel interfaces. However, the PrintServer cannot pass messages from the printer back to the printing PC—this limitation is simply an industry standard, and not one of the PrintServer itself.

However, the PrintServer can check any printer's online and printing status on the network using the Bi-Admin management utility software packaged with the PrintServer. The status-checking feature built into the management software does not require a bi-directional printer to function. If your printer came with special bi-directional software allowing you to monitor printer status, do not use it with the PrintServer—the software is most likely not network-capable. For best results, turn off the printer's bi-directional function either by (1) removing any bi-directional printing software from your network computers, and/or (2) turning off the printer's bi-directional print feature inside of the printer's on-board menus (if it has menus). Your printer's user guide should be able to provide specific instructions for doing this.

Appendix C: Upgrading Firmware

The PrintServer's firmware is upgraded through the Bi-Admin Management utility. Follow these instructions:

1. Download the firmware from Linksys's website at www.linksys.com.
2. Open the Bi-Admin Management utility.
3. Click on **Main => Upgrade Firmware**.
4. Click the **Files...** button to browse for the file.
5. Then, click the **Upgrade** button to upgrade the firmware.

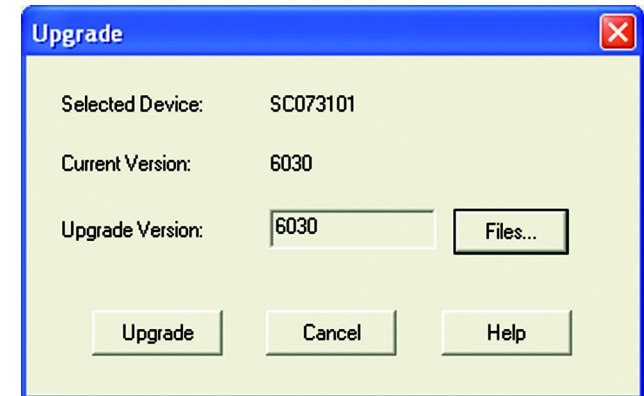


Figure C-1: Upgrade Firmware

Appendix D: Windows Help

All wireless products require Microsoft Windows. Windows is the most used operating system in the world and comes with many features that help make networking easier. These features can be accessed through Windows Help and are described in this appendix.

TCP/IP

Before a computer can communicate with the PrintServer, TCP/IP must be enabled. TCP/IP is a set of instructions, or protocol, all PCs follow to communicate over a network. This is true for wireless networks as well. Your PCs will not be able to utilize wireless networking without having TCP/IP enabled. Windows Help provides complete instructions on enabling TCP/IP.

Shared Resources

If you wish to share printers, folder, or files over your network, Windows Help provides complete instructions on utilizing shared resources.

Network Neighborhood/My Network Places

Other PCs on your network will appear under Network Neighborhood or My Network Places (depending upon the version of Windows you're running). Windows Help provides complete instructions on adding PCs to your network.

Appendix E: Glossary

802.11a - An IEEE wireless networking standard that specifies a maximum data transfer rate of 54Mbps and an operating frequency of 5GHz.

802.11b - An IEEE wireless networking standard that specifies a maximum data transfer rate of 11Mbps and an operating frequency of 2.4GHz.

802.11g - An IEEE wireless networking standard that specifies a maximum data transfer rate of 54Mbps, an operating frequency of 2.4GHz, and backward compatibility with 802.11b devices.

Access Point - Device that allows wireless-equipped computers and other devices to communicate with a wired network. Also used to expand the range of a wireless network.

Adapter - This is a device that adds network functionality to your PC.

Ad-hoc - A group of wireless devices communicating directly with each other (peer-to-peer) without the use of an access point.

Backbone - The part of a network that connects most of the systems and networks together, and handles the most data.

Bandwidth - The transmission capacity of a given device or network.

Beacon Interval - The frequency interval of the beacon, which is a packet broadcast by a router to synchronize a wireless network.

Bit - A binary digit.

Boot - To start a device and cause it to start executing instructions.

Bridge - A device that connects two different kinds of local networks, such as a wireless network to a wired Ethernet network.

Broadband - An always-on, fast Internet connection.

Browser - A browser is an application program that provides a way to look at and interact with all the information on the World Wide Web.

Buffer - A block of memory that temporarily holds data to be worked on later when a device is currently too busy to accept the data.

Cable Modem - A device that connects a computer to the cable television network, which in turn connects to the Internet.

CSMA/CA (Carrier Sense Multiple Access/Collision Avoidance) - A method of data transfer that is used to prevent data loss in a network.

CTS (Clear To Send) - A signal sent by a device to indicate that it is ready to receive data.

Daisy Chain - A method used to connect devices in a series, one after the other.

Database - A collection of data that is organized so that its contents can easily be accessed, managed, and updated.

DDNS (Dynamic Domain Name System) - The capability of having a website, FTP, or e-mail server-with a dynamic IP address-use a fixed domain name.

Default Gateway - A device that forwards Internet traffic from your local area network.

DHCP (Dynamic Host Configuration Protocol) - A protocol that lets one device on a local network, known as a DHCP server, assign temporary IP addresses to the other network devices, typically computers.

DMZ (Demilitarized Zone) - Removes the Router's firewall protection from one PC, allowing it to be "seen" from the Internet.

DNS (Domain Name Server) - The IP address of your ISP's server, which translates the names of websites into IP addresses.

Domain - A specific name for a network of computers.

Download - To receive a file transmitted over a network.

DSL (Digital Subscriber Line) - An always-on broadband connection over traditional phone lines.

DSSS (Direct-Sequence Spread-Spectrum) - A type of radio transmission technology that includes a redundant bit pattern to lessen the probability of data lost during transmission. Used in 802.11b networking.

DTIM (Delivery Traffic Indication Message) - A message included in data packets that can increase wireless efficiency.

Dynamic IP Address - A temporary IP address assigned by a DHCP server.

Encryption - Encoding data to prevent it from being read by unauthorized people.

Ethernet - An IEEE standard network protocol that specifies how data is placed on and retrieved from a common transmission medium.

Finger - A program that tells you the name associated with an e-mail address.

Firewall - Security measures that protect the resources of a local network from intruders.

Firmware - 1. In network devices, the programming that runs the device. 2. Programming loaded into read-only memory (ROM) or programmable read-only memory (PROM) that cannot be altered by end-users.

Fragmentation - Breaking a packet into smaller units when transmitting over a network medium that cannot support the original size of the packet.

FTP (File Transfer Protocol) - A standard protocol for sending files between computers over a TCP/IP network and the Internet.

Full Duplex - The ability of a networking device to receive and transmit data simultaneously.

Gateway - A system that interconnects networks.

Half Duplex - Data transmission that can occur in two directions over a single line, but only one direction at a time.

Hardware - The physical aspect of computers, telecommunications, and other information technology devices.

HTTP (HyperText Transport Protocol) - The communications protocol used to connect to servers on the World Wide Web.

IEEE (The Institute of Electrical and Electronics Engineers) - An independent institute that develops networking standards.

Infrastructure - Currently installed computing and networking equipment.

Infrastructure Mode - Configuration in which a wireless network is bridged to a wired network via an access point.

IP (Internet Protocol) - A protocol used to send data over a network.

IP Address - The address used to identify a computer or device on a network.

IPCONFIG - A Windows 2000 and XP utility that displays the IP address for a particular networking device.

IPSec (Internet Protocol Security) - A VPN protocol used to implement secure exchange of packets at the IP layer.

ISM band - Radio band used in wireless networking transmissions.

ISP (Internet Service Provider) - A company that provides access to the Internet.

LAN (Local Area Network) - The computers and networking products that make up the network in your home or office.

MAC (Media Access Control) Address - The unique address that a manufacturer assigns to each networking device.

Mbps (Megabits Per Second) - One million bits per second; a unit of measurement for data transmission.

Multicasting - Sending data to a group of destinations at once.

NAT (Network Address Translation) - NAT technology translates IP addresses of a local area network to a different IP address for the Internet.

Network - A series of computers or devices connected for the purpose of data sharing, storage, and/or transmission between users.

NNTP (Network News Transfer Protocol) - The protocol used to connect to Usenet groups on the Internet.

Node - A network junction or connection point, typically a computer or work station.

OFDM (Orthogonal Frequency Division Multiplexing) - A type of modulation technology that separates the data stream into a number of lower-speed data streams, which are then transmitted in parallel. Used in 802.11a, 802.11g, and powerline networking.

Packet - A unit of data sent over a network.

Passphrase - Used much like a password, a passphrase simplifies the WEP encryption process by automatically generating the WEP encryption keys for Linksys products.

Ping (Packet INternet Groper) - An Internet utility used to determine whether a particular IP address is online.

POP3 (Post Office Protocol 3) - A standard protocol used to retrieve e-mail stored on a mail server.

Port - 1. The connection point on a computer or networking device used for plugging in a cable or an adapter. 2. The virtual connection point through which a computer uses a specific application on a server.

PPPoE (Point to Point Protocol over Ethernet) - A type of broadband connection that provides authentication (username and password) in addition to data transport.

PPTP (Point-to-Point Tunneling Protocol) - A VPN protocol that allows the Point to Point Protocol (PPP) to be tunneled through an IP network. This protocol is also used as a type of broadband connection in Europe.

Preamble - Part of the wireless signal that synchronizes network traffic.

RJ-45 (Registered Jack-45) - An Ethernet connector that holds up to eight wires.

Roaming - The ability to take a wireless device from one access point's range to another without losing the connection.

Router - A networking device that connects multiple networks together, such as a local network and the Internet.

RTS (Request To Send) - A packet sent when a computer has data to transmit. The computer will wait for a CTS (Clear To Send) message before sending data.

Server - Any computer whose function in a network is to provide user access to files, printing, communications, and other services.

SMTP (Simple Mail Transfer Protocol) - The standard e-mail protocol on the Internet.

SNMP (Simple Network Management Protocol) - A widely used network monitoring and control protocol.

Software - Instructions for the computer. A series of instructions that performs a particular task is called a "program".

Spread Spectrum - Wideband radio frequency technique used for more reliable and secure data transmission.

SSID (Service Set Identifier) - Your wireless network's name.

Static IP Address - A fixed address assigned to a computer or device that is connected to a network.

Static Routing - Forwarding data in a network via a fixed path.

Subnet Mask - An address code that determines the size of the network.

Switch - 1. Device that is the central point of connection for computers and other devices in a network, so data can be shared at full transmission speeds. 2. A device for making, breaking, or changing the connections in an electrical circuit.

TCP/IP (Transmission Control Protocol/Internet Protocol) - A network protocol for transmitting data that requires acknowledgement from the recipient of data sent.

Telnet - A user command and TCP/IP protocol used for accessing remote PCs.

TFTP (Trivial File Transfer Protocol) - A version of the TCP/IP FTP protocol that uses UDP and has no directory or password capability.

Throughput - The amount of data moved successfully from one node to another in a given time period.

Topology - The physical layout of a network.

TX Rate - Transmission Rate.

UDP (User Datagram Protocol) - A network protocol for transmitting data that does not require acknowledgement from the recipient of the data that is sent.

Upgrade - To replace existing software or firmware with a newer version.

Upload - To transmit a file over a network.

URL (Uniform Resource Locator) - The address of a file located on the Internet.

VPN (Virtual Private Network) - A security measure to protect data as it leaves one network and goes to another over the Internet.

WAN (Wide Area Network) - The Internet.

WEP (Wired Equivalent Privacy) - A method of encrypting data transmitted on a wireless network for greater security.

WINIPCFG - A Windows 98 and Millennium utility that displays the IP address for a particular networking device.

WLAN (Wireless Local Area Network) - A group of computers and associated devices that communicate with each other wirelessly.

Appendix F: Specifications

Standards	IEEE 802.3, 802.3u, USB 1.0/1.1
Ports/Buttons	4 10/100 RJ-45 Ports Auto MDI/MDI-X, Reset
Cabling Type male connectors	Category 5 or better, and USB1.1 cable with Type-B female and Type-A
LEDs	Status, USB, 1-4
Dimensions (W x H x D)	3.66" x 1.18" x 3.54" (93 mm x 30 mm x 90 mm)
Unit Weight	7.8 oz. (0.221 kg)
Power	External, 5V DC, 2.5A
Certifications	FCC, CE Class B
Operating Temp.	0°C to 40°C (32°F to 104°F)
Storage Temp.	-20°C to 70°C (-4°F to 158°F)
Operating Humidity	10% to 85% Non-Condensing
Storage Humidity	5% to 90% Non-Condensing

Appendix G: Warranty Information

LIMITED WARRANTY

Linksys warrants to the original end user purchaser ("You") that, for a period of three years, (the "Warranty Period") Your Linksys product will be free of defects in materials and workmanship under normal use. Your exclusive remedy and Linksys's entire liability under this warranty will be for Linksys at its option to repair or replace the product or refund Your purchase price less any rebates.

If the product proves defective during the Warranty Period call Linksys Technical Support in order to obtain a Return Authorization Number. BE SURE TO HAVE YOUR PROOF OF PURCHASE ON HAND WHEN CALLING. When returning a product, mark the Return Authorization Number clearly on the outside of the package and include a copy of your original proof of purchase. RETURN REQUESTS CANNOT BE PROCESSED WITHOUT PROOF OF PURCHASE. You are responsible for shipping defective products to Linksys. Linksys pays for UPS Ground shipping from Linksys back to You only. Customers located outside of the United States of America and Canada are responsible for all shipping and handling charges.

ALL IMPLIED WARRANTIES AND CONDITIONS OF MERCHANTABILITY OR FITNESS FOR A PARTICULAR PURPOSE ARE LIMITED TO THE DURATION OF THE WARRANTY PERIOD. ALL OTHER EXPRESS OR IMPLIED CONDITIONS, REPRESENTATIONS AND WARRANTIES, INCLUDING ANY IMPLIED WARRANTY OF NON-INFRINGEMENT, ARE DISCLAIMED. Some jurisdictions do not allow limitations on how long an implied warranty lasts, so the above limitation may not apply to You. This warranty gives You specific legal rights, and You may also have other rights which vary by jurisdiction.

TO THE EXTENT NOT PROHIBITED BY LAW, IN NO EVENT WILL LINKSYS BE LIABLE FOR ANY LOST DATA, REVENUE OR PROFIT, OR FOR SPECIAL, INDIRECT, CONSEQUENTIAL, INCIDENTAL OR PUNITIVE DAMAGES, HOWEVER CAUSED REGARDLESS OF THE THEORY OF LIABILITY, ARISING OUT OF OR RELATED TO THE USE OF OR INABILITY TO USE THE PRODUCT, EVEN IF LINKSYS HAS BEEN ADVISED OF THE POSSIBILITY OF SUCH DAMAGES. IN NO EVENT WILL LINKSYS' LIABILITY EXCEED THE AMOUNT PAID BY YOU FOR THE PRODUCT.

The foregoing limitations will apply even if any warranty or remedy provided under this Section fails of its essential purpose. Some jurisdictions do not allow the exclusion or limitation of incidental or consequential damages, so the above limitation or exclusion may not apply to You.

Please direct all inquiries to: Linksys, P.O. Box 18558, Irvine, CA 92623 USA.

Appendix H: Regulatory Information

FCC STATEMENT

This PrintServer for USB with 4-Port Switch has been tested and complies with the specifications for a Class B digital device, pursuant to Part 15 of the FCC Rules. These limits are designed to provide reasonable protection against harmful interference in a residential installation. This equipment generates, uses, and can radiate radio frequency energy and, if not installed and used according to the instructions, may cause harmful interference to radio communications. However, there is no guarantee that interference will not occur in a particular installation. If this equipment does cause harmful interference to radio or television reception, which is found by turning the equipment off and on, the user is encouraged to try to correct the interference by one or more of the following measures:

- Reorient or relocate the receiving antenna
- Increase the separation between the equipment or device
- Connect the equipment to an outlet other than the receiver's
- Consult a dealer or an experienced radio/TV technician for assistance

EC Declaration of Conformity (Europe)

In compliance with the EMC Directive 89/336/EEC, Low Voltage Directive 73/23/EEC, and Amendment Directive 93/68/EEC, this product meets the requirements of the following standards:

- EN55022 Emission
- EN55024 Immunity

Industry Canada (Canada)

This Class B digital apparatus complies with Canadian ICES-003.
Cet appareil numérique de la classe (B) est conforme à la norme NMB-003 du Canada.

Appendix I: Contact Information

Need to contact Linksys?

Visit us online for information on the latest products and updates to your existing products at:

<http://www.linksys.com> or
<ftp.linksys.com>

Can't find information about a product you want to buy on the web? Do you want to know more about networking with Linksys products? Give our advice line a call at:
Or fax your request in to:

800-546-5797 (LINKSYS)
949-261-8868

If you experience problems with any Linksys product, you can call us at:

800-326-7114
support@linksys.com

Don't wish to call? You can e-mail us at:

If any Linksys product proves defective during its warranty period, you can call the Linksys Return Merchandise Authorization department for obtaining a Return Authorization Number at:
(Details on Warranty and RMA issues can be found in the Warranty Information section in this Guide.)

949-261-1288