

# **GPSport260 ezUpdate Operation Procedure**

<b>GPSport260 ezUpdate support device</b>
<b>GPSport260</b> <b>GPSport260Pro</b>

<b>GPSport260 ezUpdate attention</b>
<b>1. Do not disconnect cable from device or PC site in process of updating.</b> <b>2. Please make a copy and delete the Log data in before update.</b>

## Step1 : Install USB driver

GPSport260/ GPSport260Pro :

Install PL2303\_Prolific\_DriverInstaller\_v1210.exe

## Step2 : Connect USB cable to device

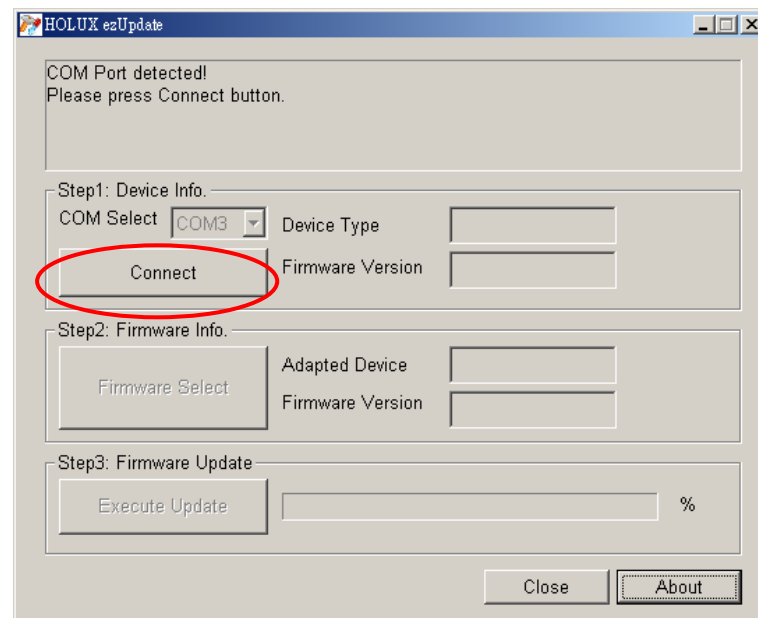
## Step3 : Execute GPSport260 ezUpdate

Execute HOLUX ezUpdate.exe

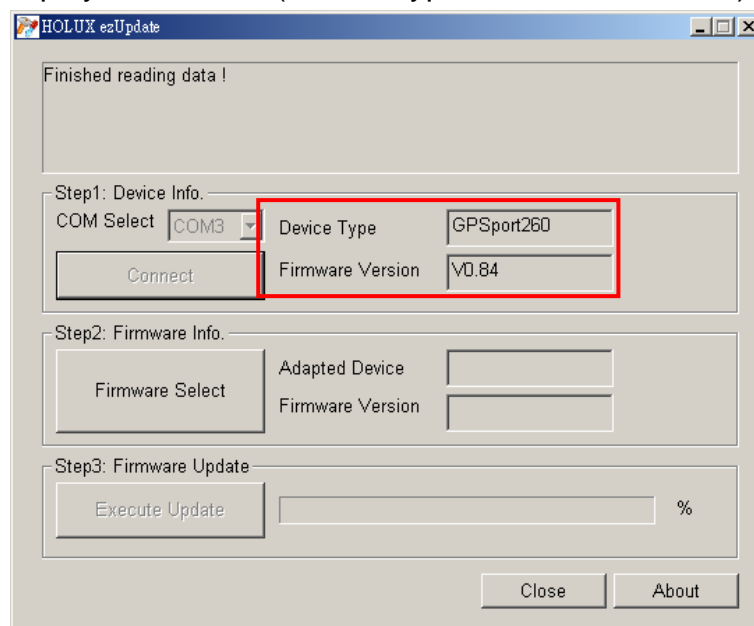
If detect COM Port , press **Connect** button.

If fail to detect COM Port , select COM Port and then press **Connect** button.

[The way to select COM Port , please refer to Q&A1]

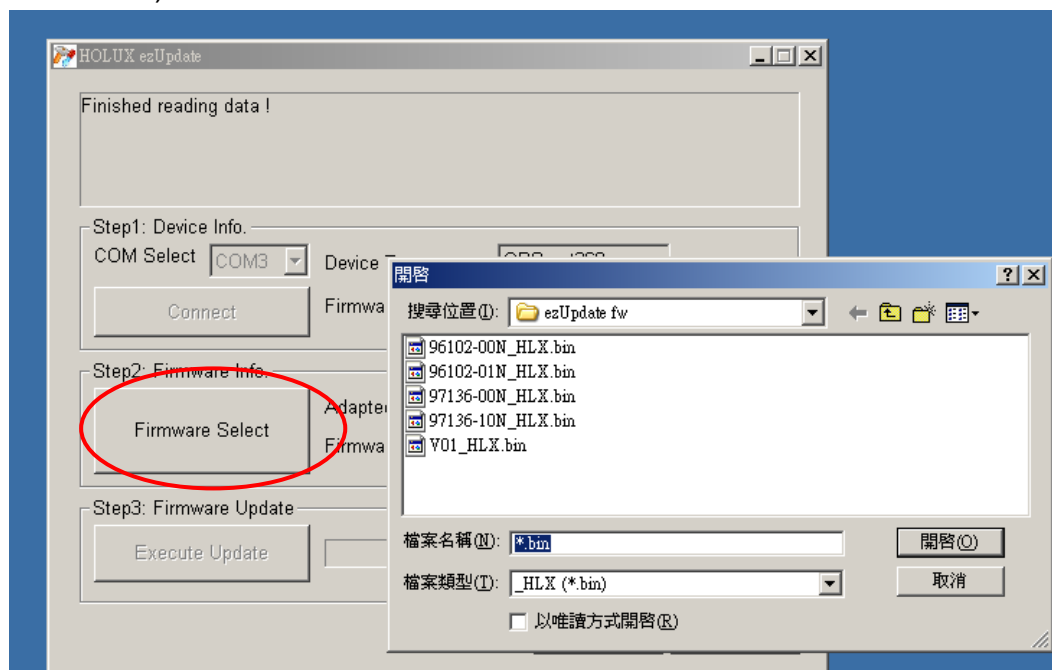


## Display information (Device Type / Firmware Version)

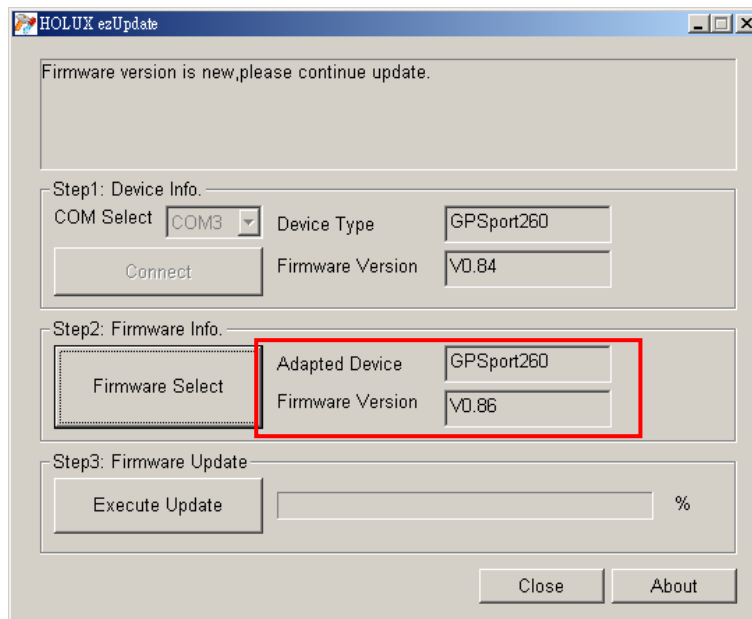


## Step4 : Select firmware file

Press **Firmware Select** button , select firmware file will update (.bin file ends with \_HLX).

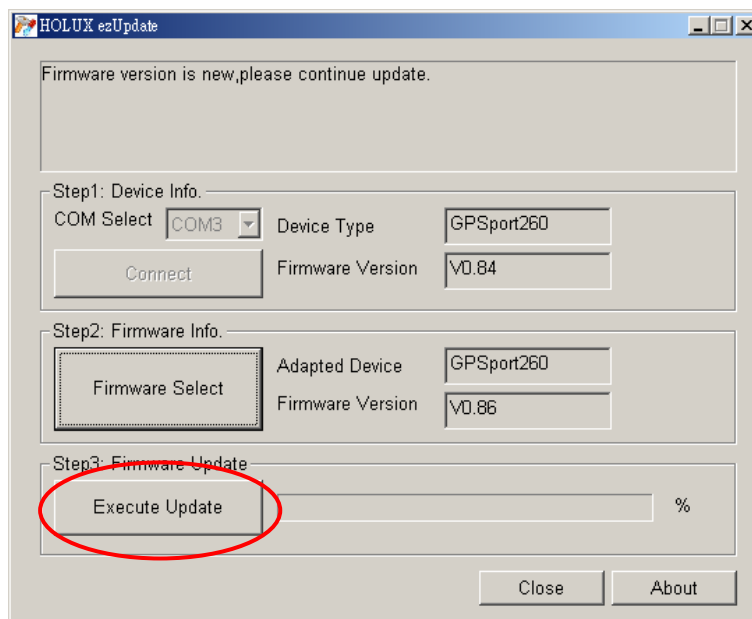


Display firmware information  
(Adapted Device / Firmware Version)




### Step5 : Update Firmware

Press **Execute Update** button , it will take about 2~3 minutes to update.




If you update **GPSport260/ GPSport260Pro** , please follow the procedure :



Please follow the procedure:

- >Press "Backlight button" and "Direction button" to right at same time
- >Release "Direction button"



- >Select "Main FW" and press "Power button" to confirm
- >Close this dialogue

Close

Device begins to download firmware and do not disconnect USB cable.

HOLUX ezUpdate

Download and Update Firmware...

Step1: Device Info.

COM Select  Device Type

Firmware Version

Step2: Firmware Info.

Adapted Device

Firmware Version

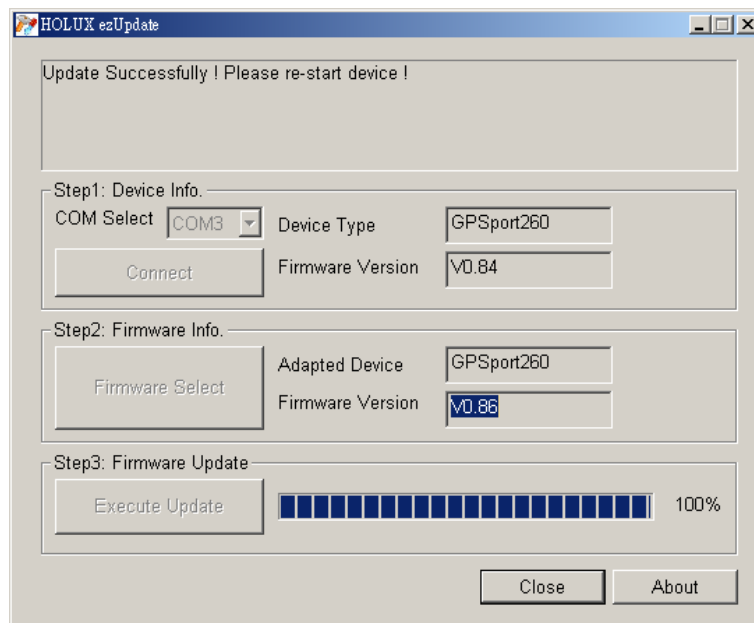
Step3: Firmware Update

6%

Close

About

## Update successfully



## Step6 : Restart device

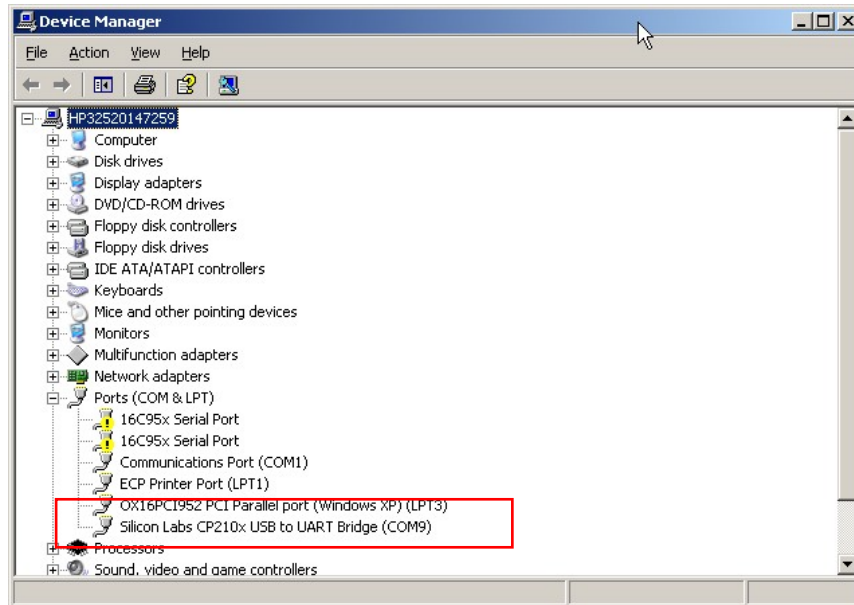
Please restart device to confirm the setting values will work.

## Q&A1 : How to set COM Port

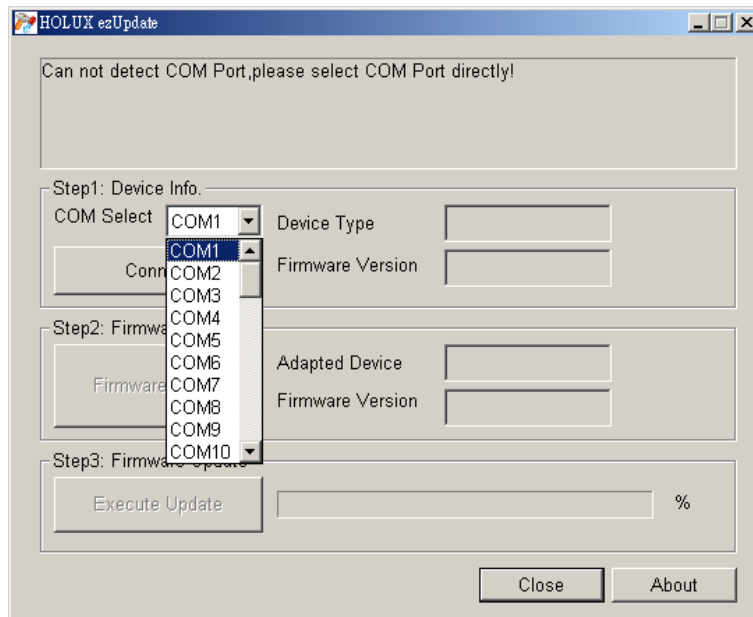
Open **Device Manager** , under Ports item :

**GPSport260/ GPSport260Pro :**

COM Port of “**Prolific USB-to-Serial Comm Port**”.



And select COM Port in the ezUpdate COM Port list.



## Q&A2 : COM Port can't be set

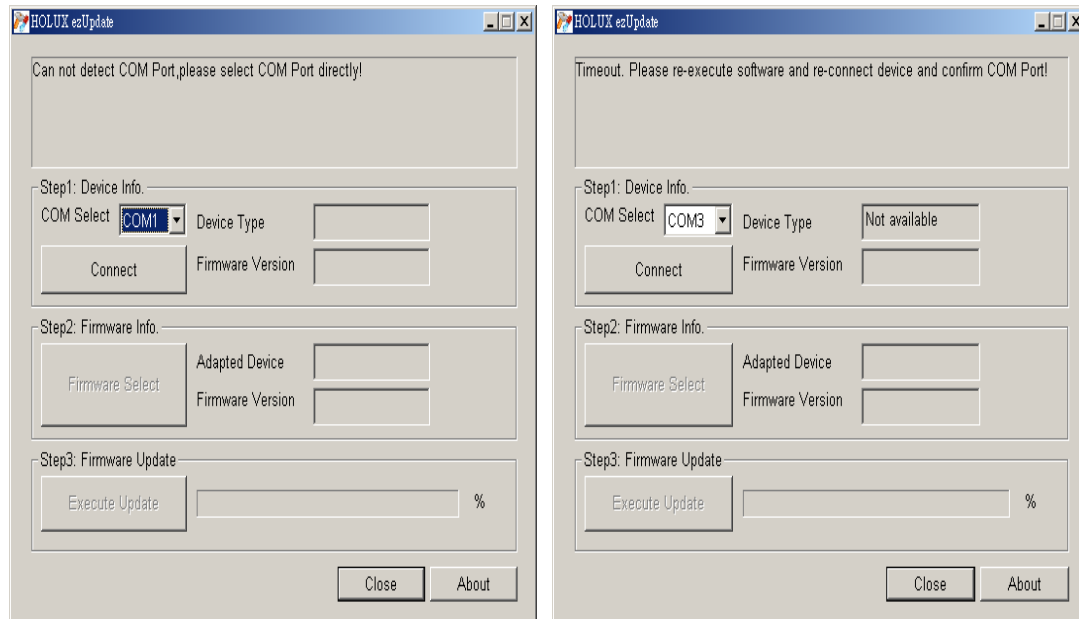
If COM Port can not detect COM Port and COM Select still can not detect COM Port or the cursor in the monitor shift irregularly.

Please follow the operation :

**Step1 : Turn Off device**

**Step2 : Re-connect USB cable**

**Step3 : Re-execute ezUpdate**



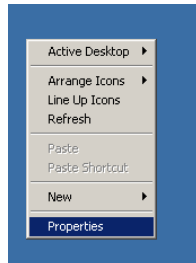


## Q&A3 : Exceeding field

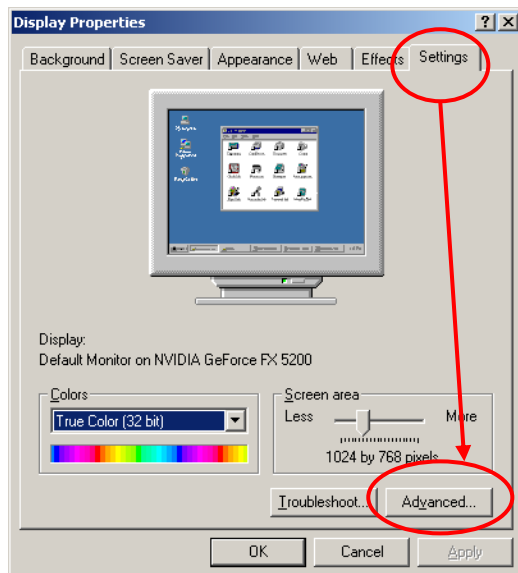
If you execute ezUpdate first time , the fields are exceeding .

Please follow the steps to fix it .

**Step1 : Press right button of mouse on desktop , select “Properties”**



**Step2 : Setting tab and Advanced button**



**Step3 : General tab and Font Size , select “Small Font”**

**System will restart and fields will not exceed .**

