

MCS98XX

Windows XP 32 / 64 bit User Manual

Table of Contents

1.	Introduction.....	2
2.	Obtaining Driver	2
3.	Driver Installation	2
4.	Verifying Driver Installation.....	3
5.	Serial Port Properties Sheet:.....	4
6.	Serial Port Features and Mode Changes:	8
7.	Parallel Port Features and Mode Changes:	8
8.	Uninstalling Drivers:	9
9.	Installation / Detection / Un-Installation of MCS98XX on Win 2000, Win 2003 server	10
10.	Technical Support:.....	10

1. Introduction

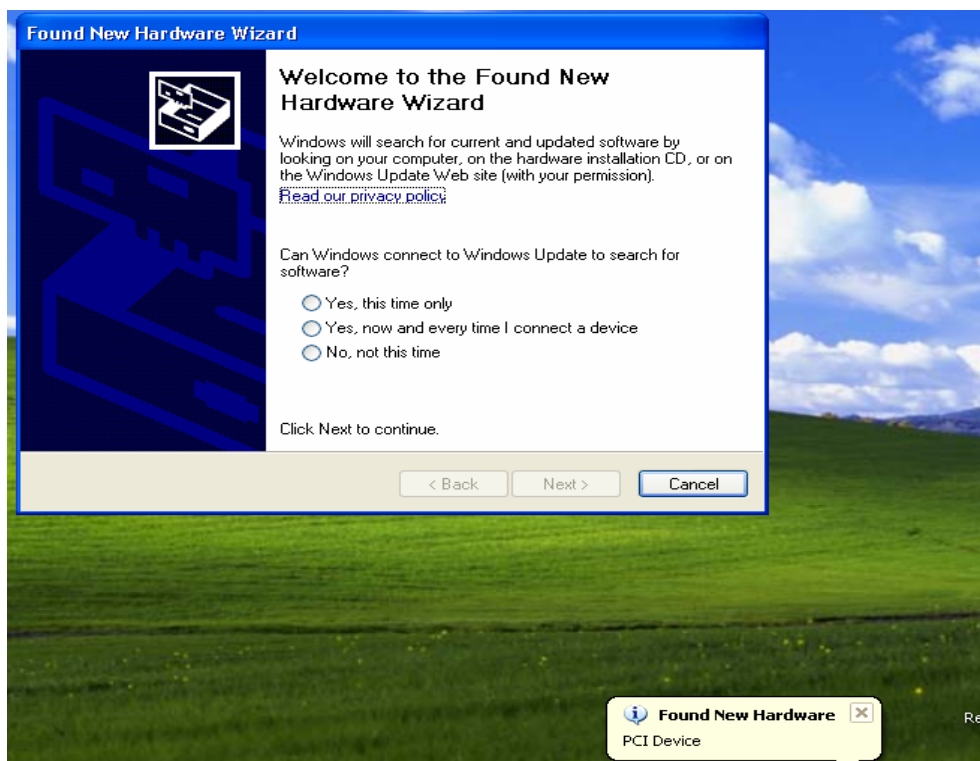
This document describes the software driver installation procedure for MosChip MCS98XX PCI to Serial / Parallel controller or other manufacturer's products based on MosChip MCS98XX ASIC.

2. Obtaining Driver

MCS98XX software drivers can be downloadable from www.moschip.com.

3. Driver Installation

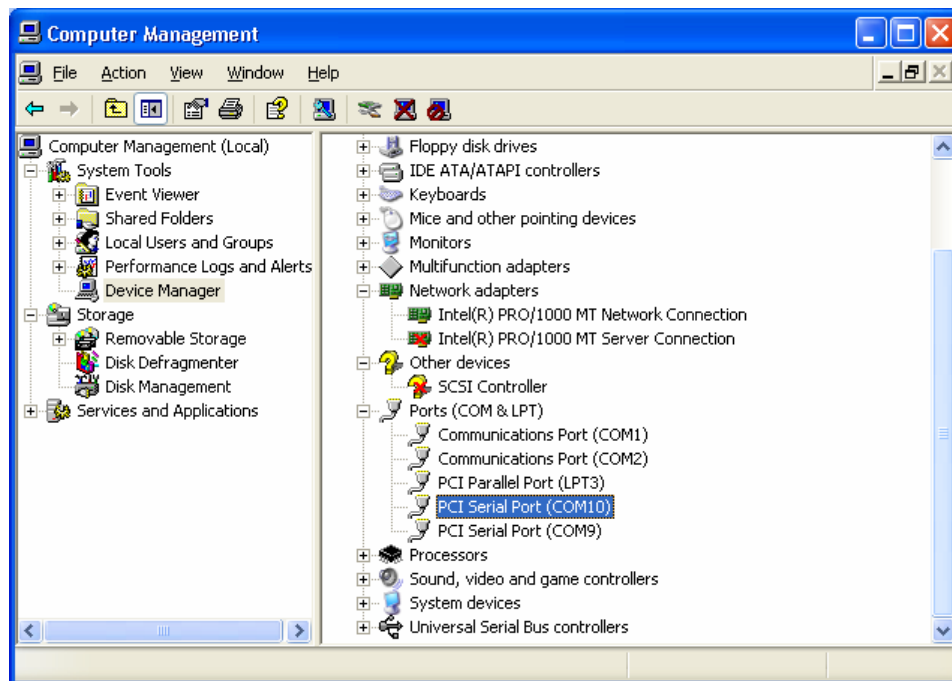
Insert MCS98XX PCI to Serial/Parallel card in the PCI slot and turn ON the PC. You will find a new hardware wizard when Windows XP OS is completely boot up (Screen shot given below)



Continue the installation by specifying the path of MCS98XX driver. All serial / parallel ports will get installed in the PC automatically. Windows pops up a message showing "New Hardware is installed and ready to use" indicating the completion of hardware wizard.

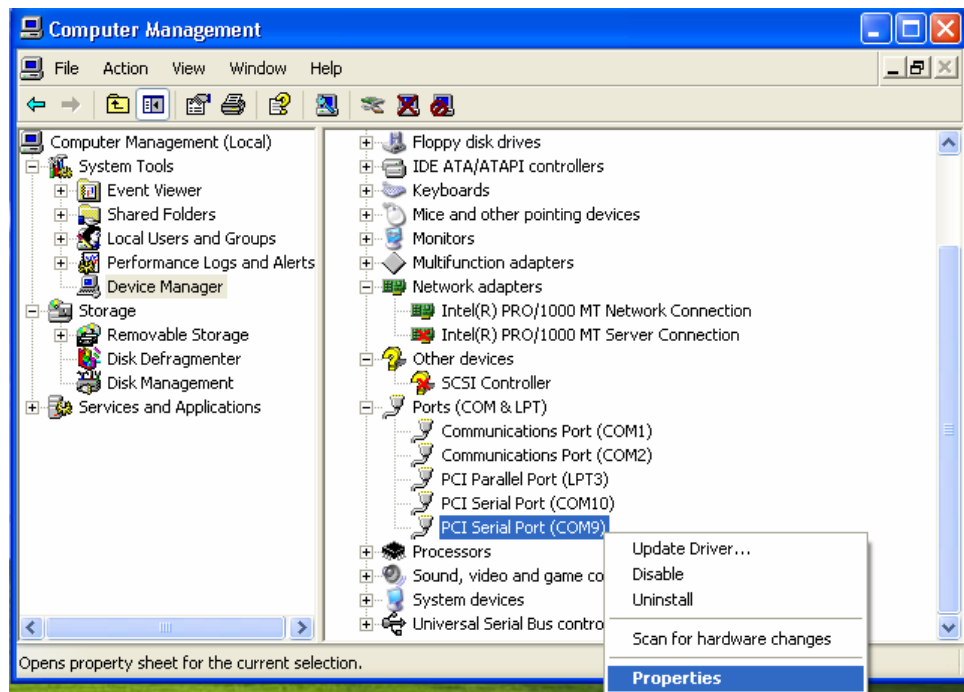
4. Verifying Driver Installation

MCS98XX device detection and driver installation can be confirmed from Device Manager. For Example proper detection of the MCS9835 PCI Card (2 Serial 1Parallel) can be confirmed from the Device manager as shown below:



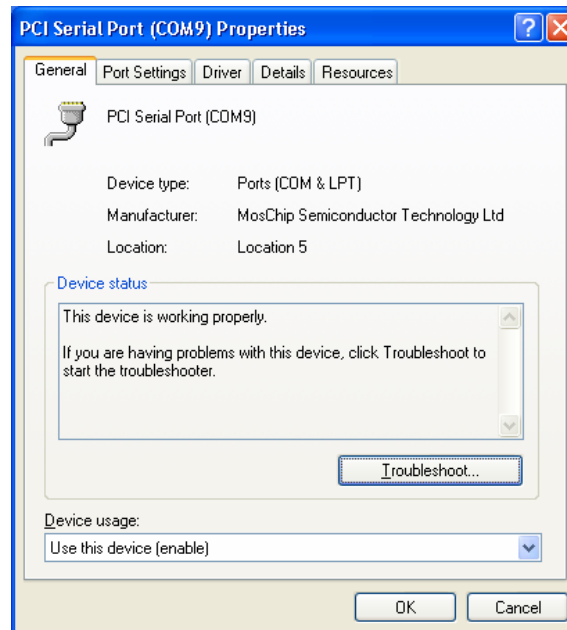
5. Serial Port Properties Sheet:

In the Device Manager window, right click on required Port and then click on “**Properties**” to open the Properties page of the serial port.



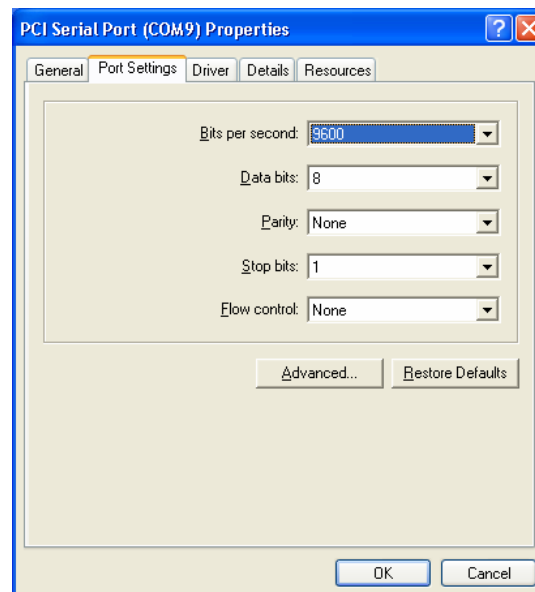
General Tab:

The “**General**” Tab provides you details about “Device Type”, “Manufacturer” and “Device Status”.



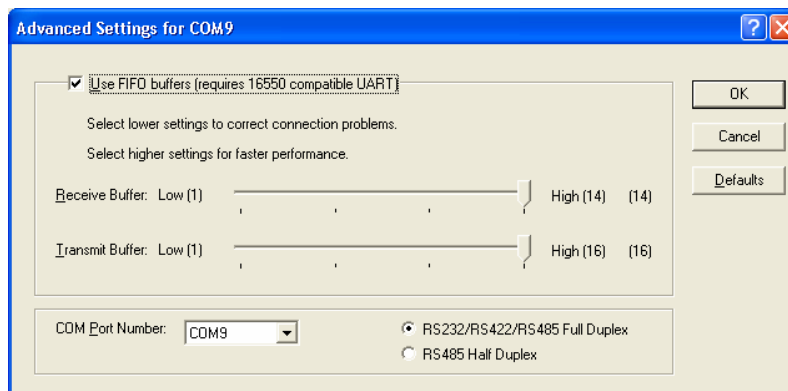
Port Settings Tab:

The “**Port Settings**” Tab is used to configure parameters of the Serial Port. These settings will be overridden by the settings configured in the serial port application.

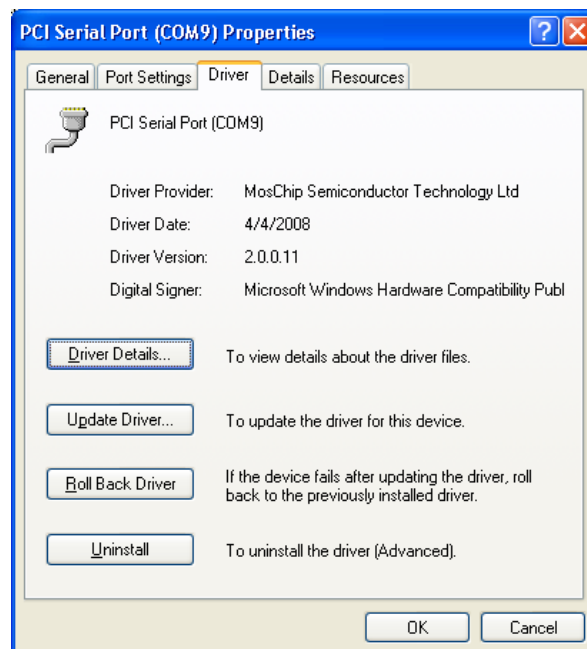


Bits per Second selection is used to set the default Baud rate settings.
Data bits selection will have options 4,5,6,7 and 8 data bits.
Parity selection will have Even, Odd, None, Mark and Space parity settings.
Stop bits selection will have 1, 1.5 and 2 selections.
Flow Control selection will have Xon/Xoff, Hardware and None settings.

To change the Port Number click on “**Advanced**” tab and select the required Port Number as shown below:

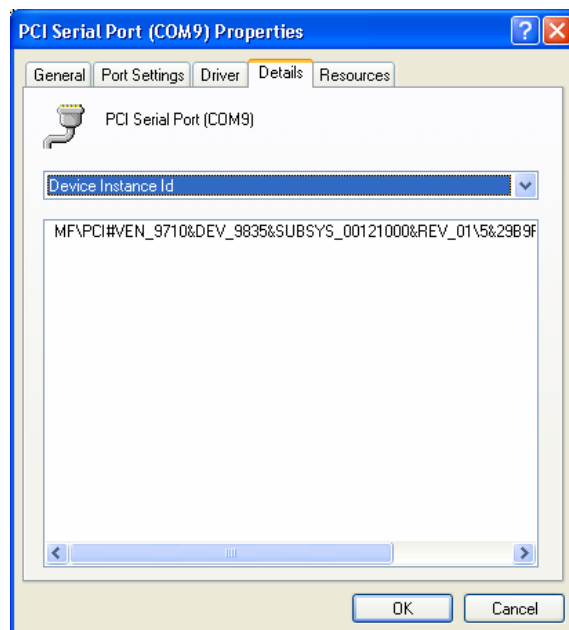


Driver Tab:

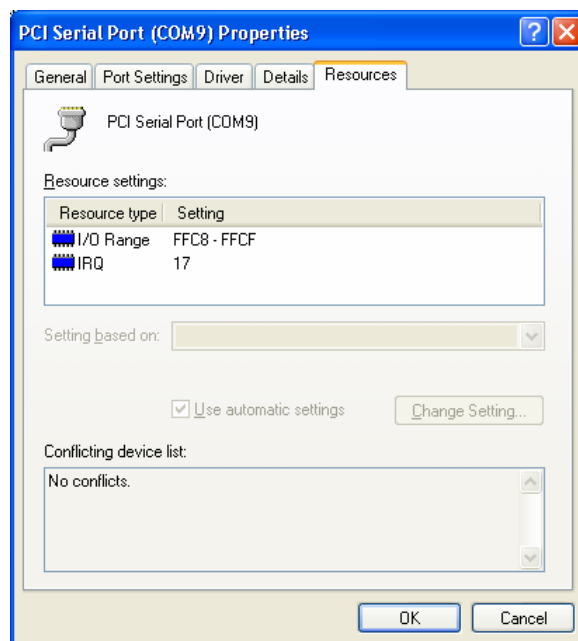


The **Driver Tab** shows the details of Driver Provider, Driver Release Date, Driver version installed on your PC and Digital Signer details as shown above.

Details Tab:



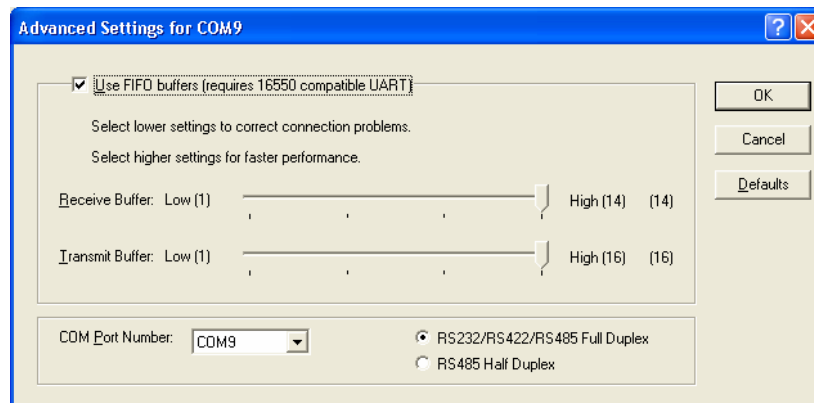
Resource Tab:



The **Resource Tab** gives the details of IRQ, IO Ranges and Memory ranges that are assigned to a particular Serial Port.

6. Serial Port Features and Mode Changes:

Serial port settings can be configured by selecting appropriate radio button in the advanced settings of the serial port. Advance settings tab is shown below.



By default, the radio button “RS232/RS422/RS485 Full Duplex” is selected. This mode works fine for RS232/RS422/RS485 modes without any need of manual intervention in software or hardware.

Respective cables are to be used for each mode.

Serial port can be configured into RS485 Half duplex mode by selecting “RS485 Half Duplex” radio button in the window shown above.

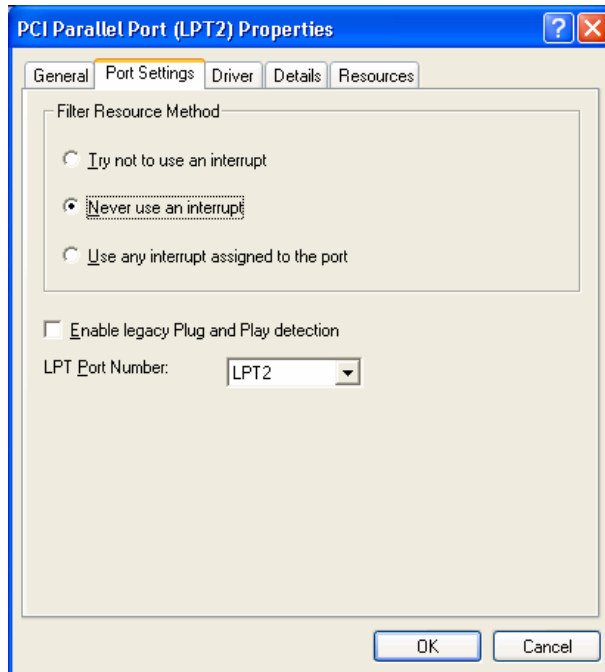
7. Parallel Port Features and Mode Changes:

Parallel Port Features:

MCS9835 Parallel port supports SPP/CBFIFO/ECP/EPP modes. Parallel port mode will be configured automatically in to the required mode after handshaking with the connected device.

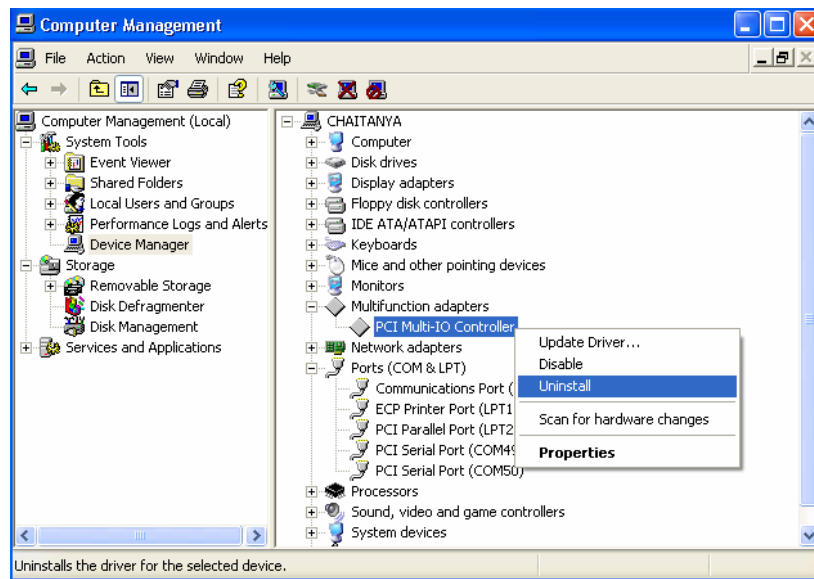
Parallel port number can be changed from its properties page in device manager.

Properties page for MCS9835 parallel port is as shown below.



8. Uninstalling Drivers:

The MCS98XX drivers can be un-installed through device manager. In Device Manager, under “Multi Function Adapters” category, select the “PCI Multi-IO controller”, right click on it and select “Uninstall”. OS prompts for confirm device removal, click on “OK” to uninstall the drivers.



9. Installation / Detection / Un-Installation of MCS98XX on Win 2000, Win 2003 server

MCS98XX drivers of XP holds good for Win 2000, Win 2003 server - 32/64 bit also. The installation, Detection and Un-installation procedures are same as explained for Win XP.

10. Technical Support:

For queries and support contact techsupport@moschip.com.

Revision History

Date	Reason for change	Version
14 th May 2008	Initial Draft	0.1

IMPORTANT NOTICE

MosChip Semiconductor Technology, LTD products are not authorized for use as critical components in life support devices or systems. Life support devices are applications that may involve potential risks of death, personal injury or severe property or environmental damages. These critical components are semiconductor products whose failure to perform can be reasonably expected to cause the failure of the life support systems or device, or to adversely impact its effectiveness or safety. The use of MosChip Semiconductor Technology LTD's products in such devices or systems is done so fully at the customer risk and liability.

As in all designs and applications it is recommended that the customer apply sufficient safeguards and guard bands in both the design and operating parameters. MosChip Semiconductor Technology LTD assumes No liability for customer's applications assistance or for any customer's product design(s) that use MosChip Semiconductor Technology, LTD's products.

MosChip Semiconductor Technology, LTD warrants the performance of its products to the current specifications in effect at the time of sale per MosChip Semiconductor Technology, LTD standard limited warranty. MosChip Semiconductor Technology, LTD imposes testing and quality control processes that it deems necessary to support this warranty. The customer should be aware that not all parameters are 100% tested for each device. Sufficient testing is done to ensure product reliability in accordance with MosChip Semiconductor Technology LTD's warranty.

MosChip Semiconductor Technology, LTD believes the information in this document to be accurate and reliable but assumes No responsibility for any errors or omissions that may have occurred in its generation or printing. The information contained herein is subject to change without notice and no responsibility is assumed by MosChip Semiconductor Technology, LTD to update or keep current the information contained in this document, nor for its use or for infringement of patent or other rights of third parties. MosChip Semiconductor Technology, LTD does not warrant or represent that any license, either expressed or implied, is granted to the user.

Copyright © 2008 MosChip Semiconductor All Rights Reserved.