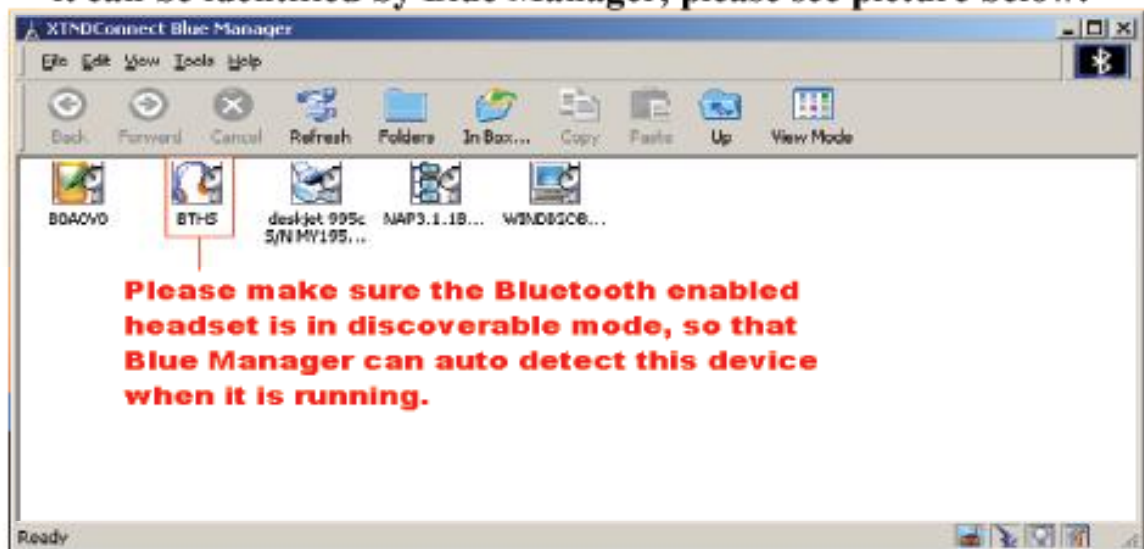


How to Use Windigo BT Audio

In this topic, users will be instructed on how to use Windigo System's BT Audio feature with Bluetooth enabled headsets. Windigo's BT Audio feature is a new enhancement. It allows a user to connect a PC with a Bluetooth headset, replacing the regular PC speakers, microphone, and associated wires.

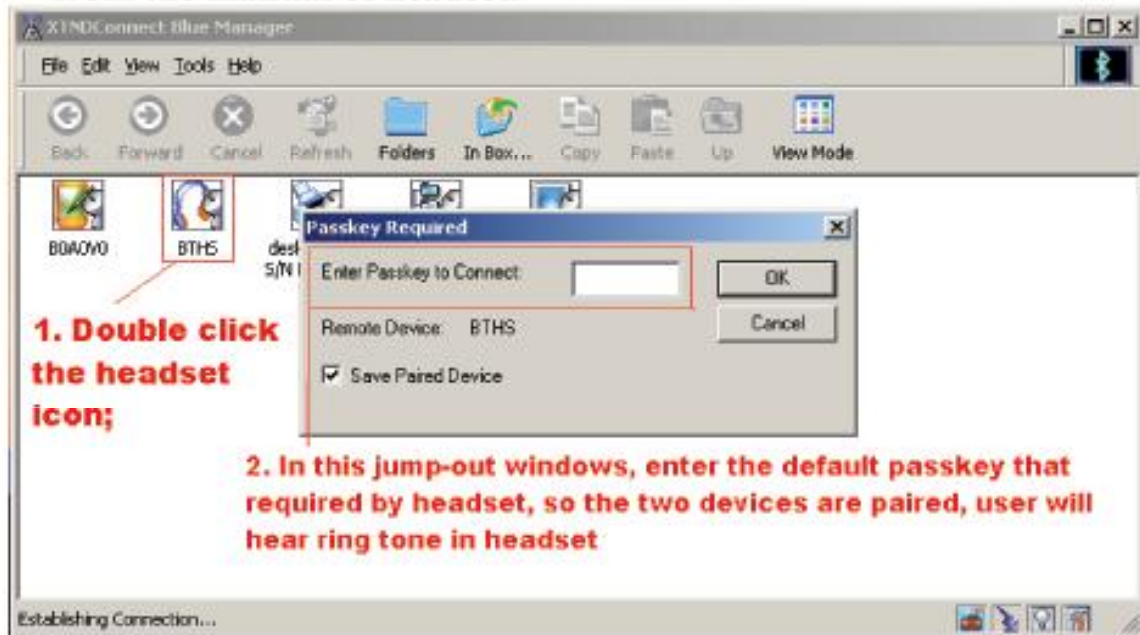
Below are the steps which will show the process:

- 1. Please install Blue Manager 3.1 or higher version;**
- 2. After installation, reboot system;**
- 3. Blue Manager will startup automatically after rebooting system. Please make sure the Bluetooth enabled headset is setup in pair mode(please read user manual of headset), so that it can be identified by Blue Manager, please see picture below:**

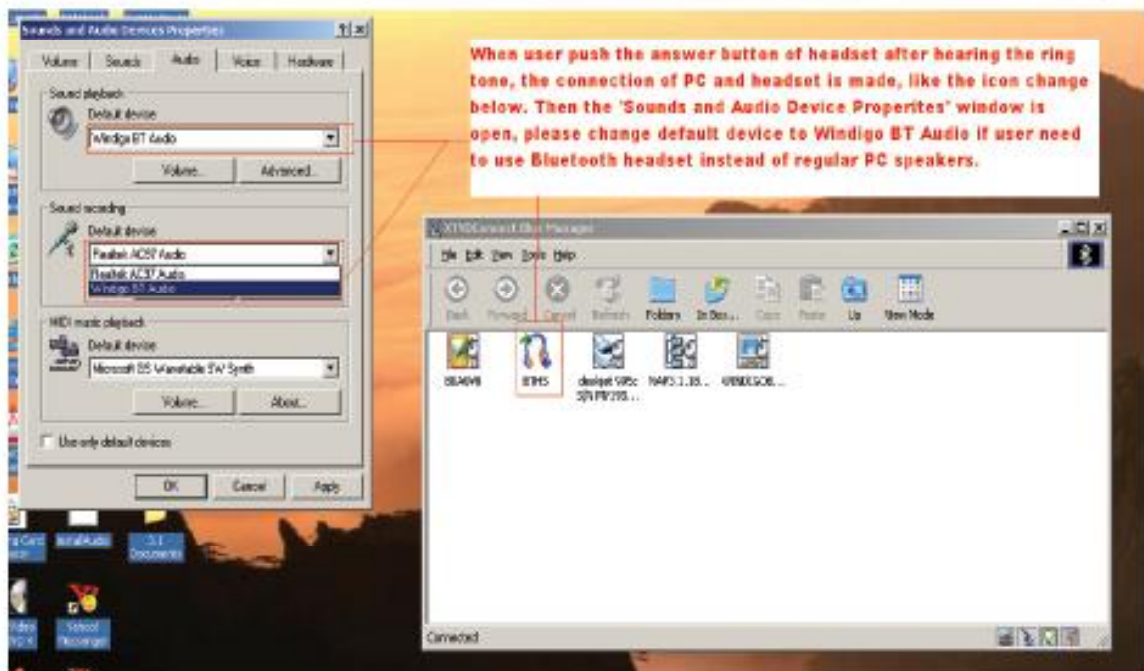


- 4. To make a connection between PC and Bluetooth enabled headset, first please make sure Blue Manager finds the in-range headset, then double click this headset icon; there will be**

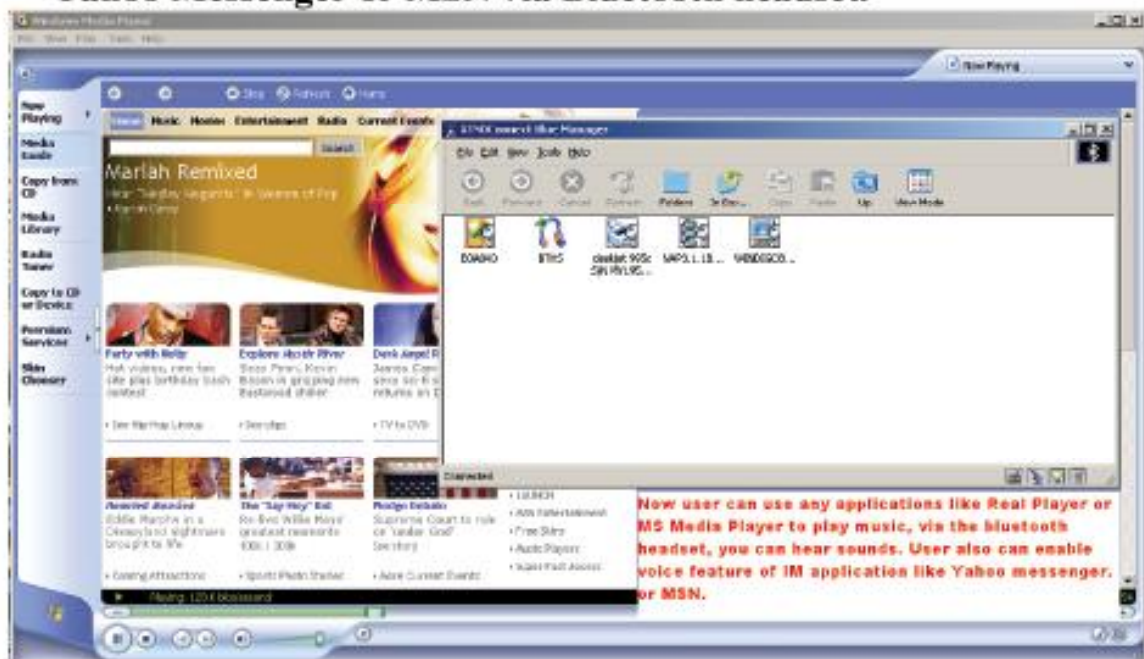
one prompt window, please input default passkey of headset, so that PC and headset will be paired. The passkey can be found from the manual of headset.



5. After entering the correct passkey, the user will hear a ring tone in the headset; simply push the answer button on the headset, and a connection will be established. At the same time, there will be another prompt Window: 'Sounds and Audio Devices Properties', please change the default sound device to 'Windigo BT Audio' if user want to use a Bluetooth headset instead of the regular PC speakers.



6. One can use any kind of media player to play music or sounds, user can also use the voice feature of some IM applications like Yahoo Messenger or MSN via Bluetooth headset.



7. If user doesn't need this connection and like to disconnect it, just right click the headset icon, and select Disconnect. The audio driver will automatically change back to the PC default audio device.



As illustrated above, we have introduced the basic method on how to make the connection from your PC to a Bluetooth headset. Since a Bluetooth headset has a feature named master mode, we also can make the connection from your BT headset to a PC. Here are the steps:

1. Please ensure both PC and headset are paired, from a previous session or by following Steps 4&5;
2. The Bluetooth headset can store the paired PC address; if user needs to make the connection, just press the answer button and the connection is made;
3. At the same time the Sound and Audio Device Properties window will prompt for input, if end user like to use Bluetooth headset instead of microphone and speakers, just change the default hardware to Windigo BT Audio;
4. After the session, just push the answer button to disconnect the PC, or double click the icon of headset to disconnect