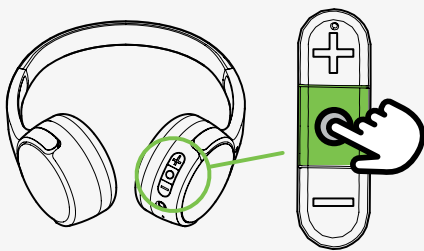




SOUNDFORM™ MINI Wireless On-Ear Headphones



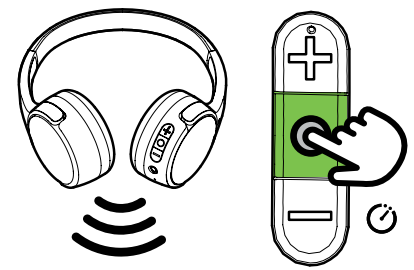
Power ON 2 sec

Power OFF 4 sec

How to power ON/OFF your Belkin Wireless On-Ear Headphone

Step 1: Press the power button on the headphone for 2 seconds to turn it **ON** or 4 seconds to turn it **OFF**.

NOTE: If the headphone will not detect any connectivity in 5 minutes, it will automatically turn **OFF**.



How to use the controls on the Belkin Wireless On-Ear Headphones



Audio Playback

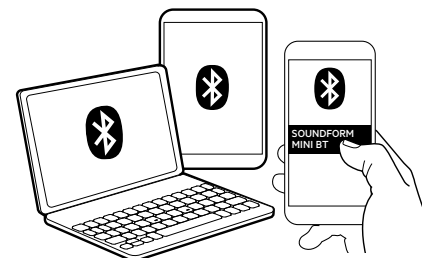
Control	Power button	+ Button	- Button
Volume up (+)		Push one time	
Volume down (-)			Push one time
Pause / Resume playback	Push one time		
Next track		Hold for 2 seconds	
Previous track			Hold for 2 seconds

Call Handling

Control	Power button	+ Button	- Button
Accept / End call	Push one time		
Reject call	Hold for 1 second		

Virtual Assistants

Control	Power button	+ Button	- Button
Activate virtual assistant	Push two times		



How to pair your Belkin Wireless On-Ear Headphones

Step 1: Press the power button on the headphone for 2 seconds.

Step 2: On your mobile device, turn ON Bluetooth to begin searching for nearby devices.



NOTE: Steps in enabling your Bluetooth may vary depending on your device's operating system.

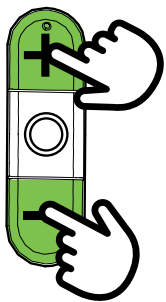
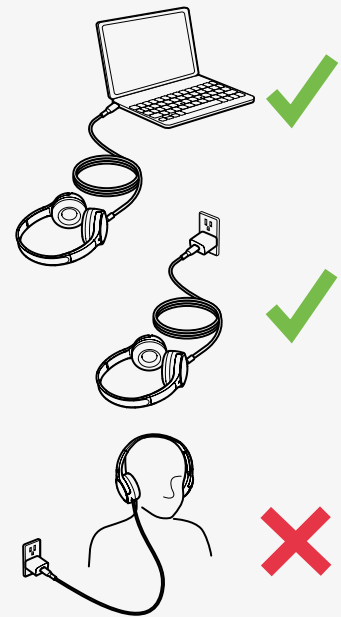
Step 3: Wait until the blue light flashes on your headphone, which means that it is pairing with your device. Then, the blue light will turn solid then turn OFF, which means that the headphone is now paired with your wireless device.



SOUNDFORM™ MINI Wireless On-Ear Headphones

How to charge your Belkin Wireless On-Ear Headphone

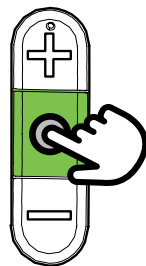
-  Red LED on, charging
-  Red LED off, 100% charged



1



2



3

How to reset your Belkin Wireless On-Ear Headphones

Step 1: Press and hold both the + and - volume buttons on the headphone for 10 seconds. The power light will blink red.

Step 2: Wait until the power light blinks blue three times, and then turn OFF.

Step 3: Press and hold the power button for 4 seconds. Your headphone should now be ready to pair again.

You have now successfully reset your headset.