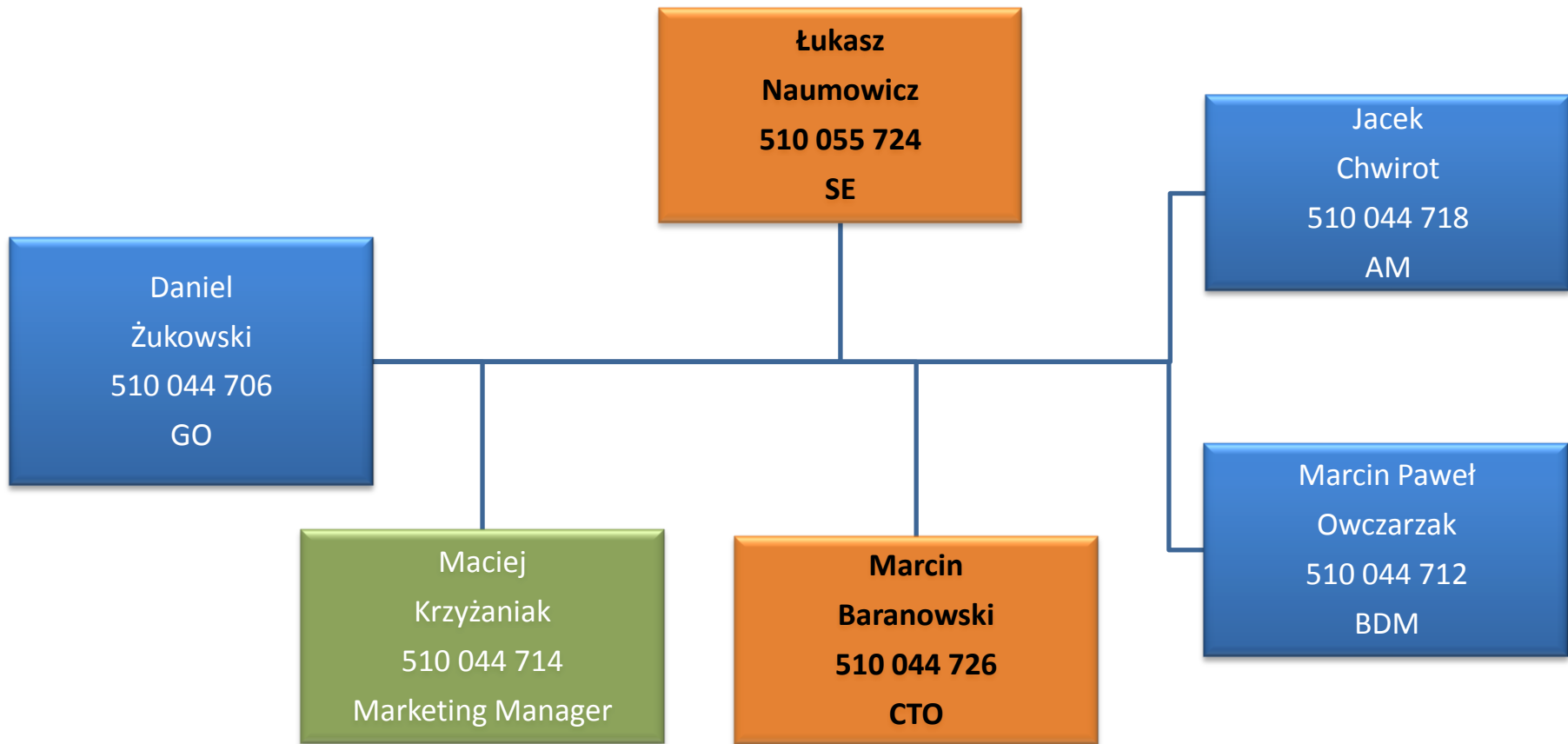


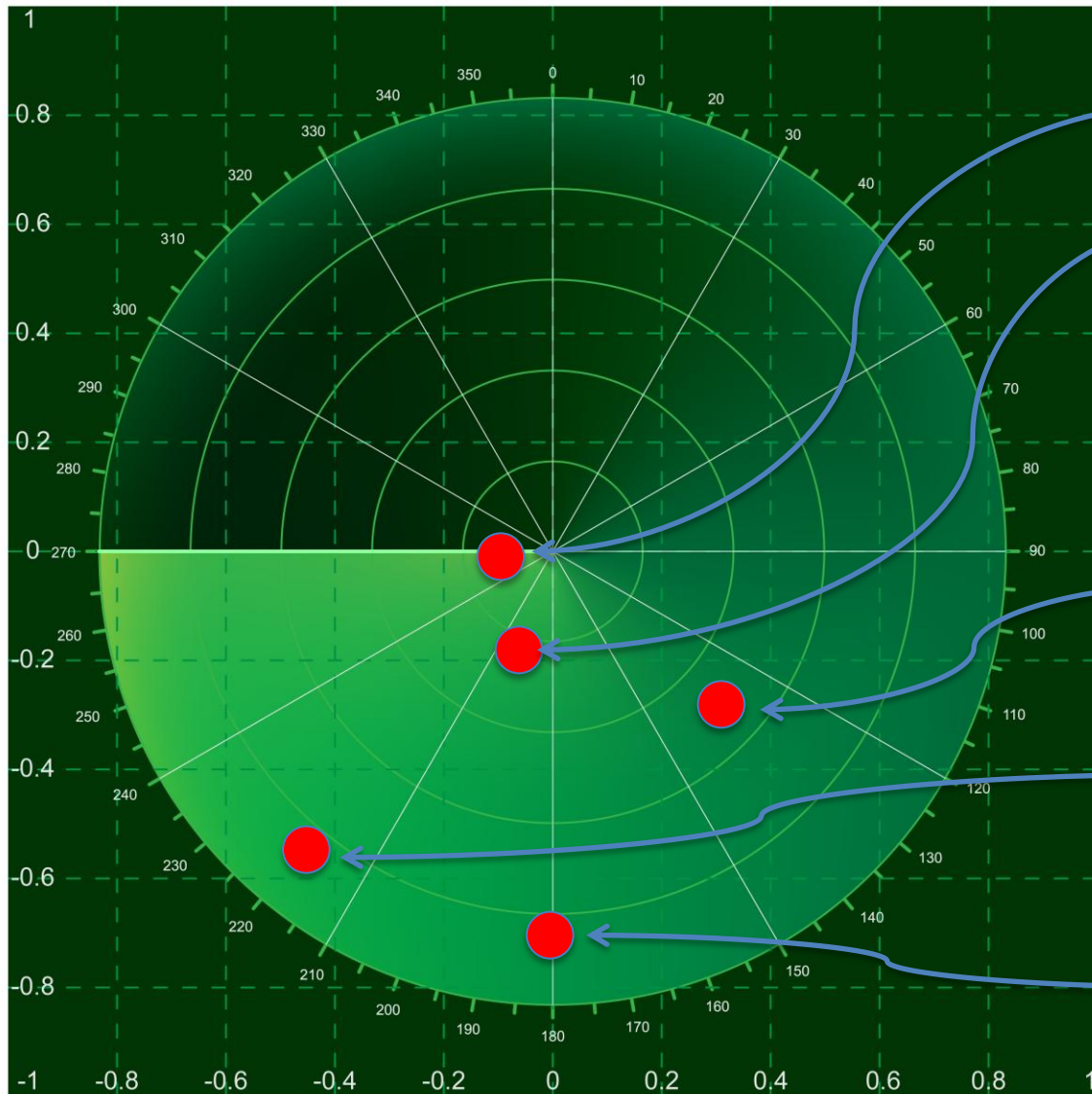
Praca z Meru

od wyceny po kontrakt serwisowy



10/09/2012 | Daniel Żukowski, Networking Business Unit Manager





• EDUKACJA

• HoReCa

- Hotele
- SPA
- Centra konferencyjne

• Logistyka/produkcja

• Healthcare

- Szpitale
- Domy opieki

• Commercial



non

lite

certified

	NON	LITE	CERTIFIED
rejestracja proj.	NIE	TAK	TAK
wsparcie inst.	NIE	zdalne	zdalne/on-site
sprzęt demo	NIE	odpłatnie	TAK
rabatowanie	NIE	TAK	TAK+
planowanie ESS	NIE	odpłatnie	TAK



Reseller partners

If you're an exceptional technology reseller, Meru may be the right partner for you.

Partner Sign In

Username

Password [LOGIN](#)

[Reset Password](#) [Request Access](#)

Partners

Reseller Partners

WINS Technology Partner Program

The Meru Channel Partner Program

Meru Networks is a trusted, committed, and profitable partner to some of the most respected and successful wireless experts and resellers in the industry worldwide. As an integral part of the Meru team, reseller partners have access to all available resources to ensure we deliver world-class wireless solutions to our customers.

www.merunetworks.com

...ion for exceeding the development and ...m you.

Complete the reseller application form to find out if Meru Networks is the right wireless networking partner for you. Once you submit your application, a Meru representative will call you to discuss the possibility of starting one of the most valued partnerships in the industry.

Program benefits

Meru offers channel partner programs worldwide, with a wide range of benefits including:

- A unique, proven wireless technology for partners to sell
- Unlimited revenue growth potential with competitive margins
- Deal registration, service and support programs, and joint marketing activities
- Sales and technical training and pre- and postsale technical support

- [Enter Portal](#)
- [Request Access](#)
- [Become a Reseller](#)
- [WINS Partner Application](#)

Find a Reseller

[Click Here](#)

Pricelist

The price list is available to North American Resellers, Distributors and EMEA and APAC distributors. If you're a EMEA or APAC reseller, please contact your distributor for local pricing.

PRICE LIST

[Meru Q3 2012 EU Partner PriceList Gen R2 \(excel\)](#)

07/16/12

 SIZE: 917.504 KB | FORMS & TOOLS

[Meru Q3 2012 EU Partner PriceList Gen R2 \(pdf\)](#)

07/16/12

 SIZE: 199.059 KB | FORMS & TOOLS

You are here: Portal Home

TECHNICAL

- Best Practice Guides
- Competitive
- Configuration Notes
- Deployment Guides & Cheat Sheets
- Field Notice
- Interoperability Notes
- Network Diagram Service
- Technology Briefs

SOLUTIONS

- Higher
- Education
- Healthcare
- Schools (K-12)
- Hospitality
- Manufacturing
- Enterprise
- Retail

APPLICATIONS

- Video
- Security
- VoIP/Voice
- Virtualization

PRODUCTS

- Services
- Identity
- Manager
- System
- Director
- Appliances
- Controllers
- Access Points
- Security
- Management
- Product
- Launches

MERU UNIVERSITY

- Sales Certification Training
- Technical Knowledge
- Partner Edge - EMEA
- Partner Sales Training & Certification

SELLING TOOLS

- Territory Plan
- Templates
- RFP
- Collateral
- Reports
- Deal Registration
- Pricelist
- Where to Buy
- Promotions

EMEA PROMOTIONS

MARKETING

- Videos
- Welcome Kit
- Your Partner Logo
- Market Development Fund
- Marketing Tools
- Demo Program



www.support.merunetworks.com

1.877.952.6725

[Find a Reseller](#)

MeruAssure Support & Services



Meru stands by its customers throughout the product life cycle with industry leading service and support experts. From design and deployment to ongoing maintenance of your Wireless LAN products, Meru provides assistance by offering professional services, educational services, and technical support through world-class people, process and systems.

Welcome, Daniel | [Logout](#)



Support Request

- » [Create Support Ticket](#)
- » [Create RMA Ticket](#)
- » [View My Tickets](#)
- » [Escalate My Tickets](#) Use this email link to escalate to support management if you feel your ticket needs to be escalated. **"NEW"**
- » [Scheduled Maintenance](#) Use this link to request and schedule a named Meru Support Engineer in advance, to support your scheduled maintenance or upgrades. **"NEW"**



Downloads and Documentation

- » [Software Downloads](#)
- » [Product Documentation](#)
- » [Field Notices](#)



New Product Registration

- » [Register Products](#)
- » [Registration Instructions](#)
- » [View Registered Products](#)
- » [View Support Contracts](#)



Knowledge Base

- » [Top 10 Articles](#)
- » [Troubleshooting](#)
- » [Configuration](#)
- » [Interoperability Matrix](#)



Licensing

- » [Activate your Licenses](#)
- » [View / Download Licenses](#)



Warranty and Support Programs

- » [Product Warranty](#)
- » [Support Programs](#)

Discussion Forum



Join other customers and experts on Forum using our SupportPortal.

Contact MeruSupport

24 x 7 Support Toll-Free Numbers

» US/Canada	1 888 637 8952 1 888 Meru WLAN
» UK	0800 085 7381
» France	080 554 0108
» Japan	0120 924853
» Norway	800 30 354
» Sweden	020 160 5667
» Denmark	80 600 087
» Finland	0800-9-18443
» Australia	1-800-428-817
» Spain	900-9-81209
» United Arab Emirates (UAE)	80004447154
» Kingdom of Saudi Arabia (KSA)	8008446119
» Sultanate of Oman	80075797

24 x 7 Support Direct Number
(For regions outside toll-free areas)
+ 1 650 385 3114

Quick Links

[OK](#)

Sieć bezprzewodowa wybrana przez

Cyfrową Szkołę



AKTUALNOŚCI



→ Nowy software od Meru

Meru udostępniło partnerom z ważnym kontraktem serwisowym nowe oprogramowanie System Director w wersji 5.2-59. Oprogramowanie dod...

→ Zwirtualizowane kontrolery od MERU

→ Najmniejszy, najtańszy i najbardziej mobilny Access Point od MERU!

→ Meru na podium w konkursie Networlida

→ Meru AP1000i - ekonomiczna „enka” dla biznesu

[więcej](#)[O MERU](#) | [NEWSY](#) | [TECHNOLOGIE](#) | [PRODUKTY](#) | [PARTNERZY](#) | [WDROŻENIA](#) | [KONTAKT](#)

→ O MERU

Najnowsze prezentacje video

1.9 Billion Wi-Fi Devices Will Hit Networks by

YouTube

Share

More info

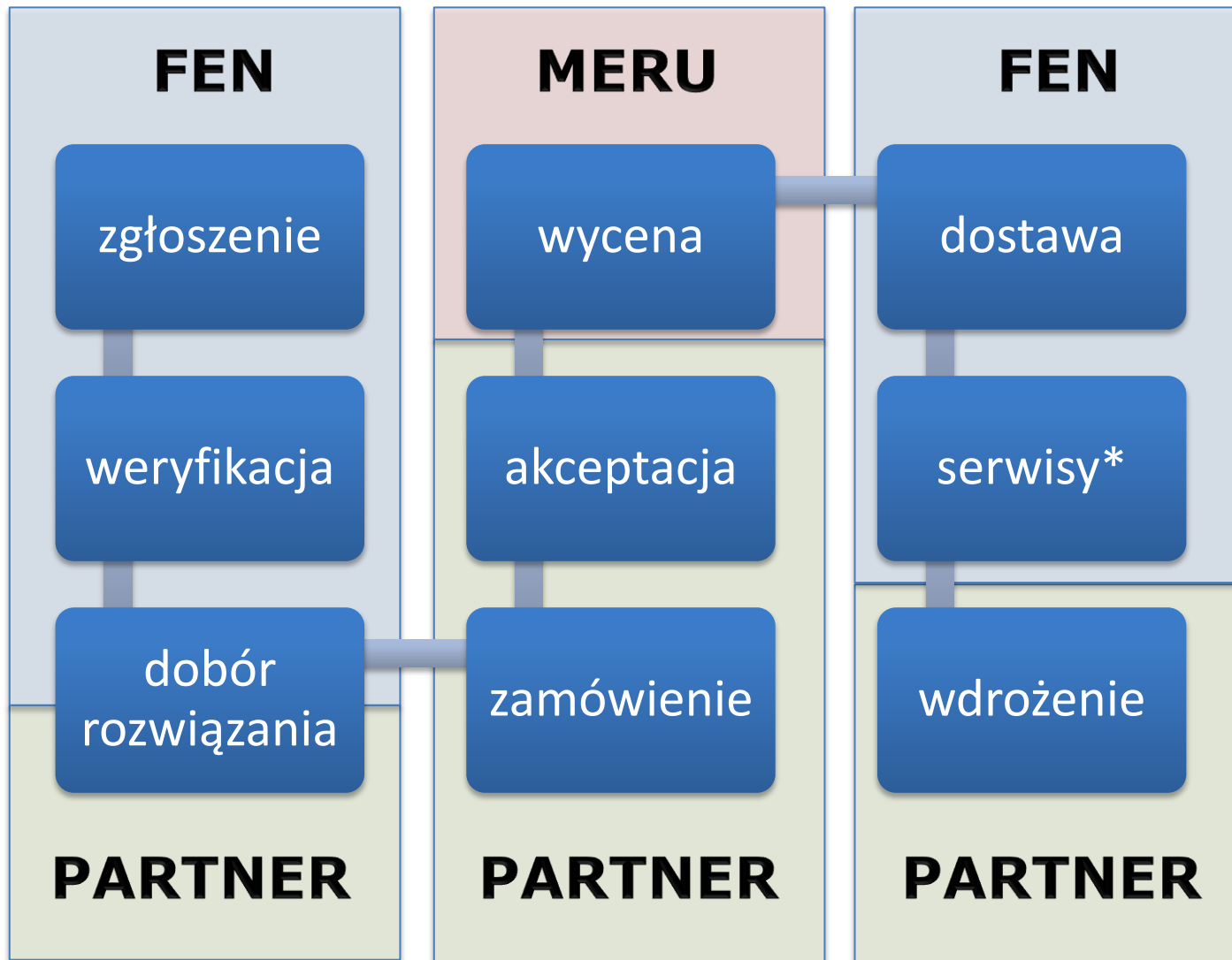


Podstawowe informacje

Meru jest jedną z największych firm sieciowych zaawansowanych rozwiązaniach (LAN). Firma powstała w 2002 roku, a jej siedziba jest zlokalizowana w amerykańskiej Dolinie Krzemowej, w miejscowości Sunnyvale, stan Kalifornia. Jako firma globalna, Meru posiada swoje oddziały na całym świecie, m.in. w: Kanadzie, Francji, Wielkiej Brytanii, Szwecji, Indiach, Korei Południowej, Japonii, a także w Singapurze i Hongkongu.

[więcej](#)

www.merunetworks.pl



Kontakt:

[*meru@fen.pl*](mailto:meru@fen.pl)

[*www.merunetworks.pl*](http://www.merunetworks.pl)