

Our **Value GP UPS Series** represent a traditional UPS system platform whose function is aimed towards the protection of your vital computer systems. They sacrifice neither reliability nor power to achieve their compact size, and mark the right choice for a Home or SOHO application environment. They are designed for customers who value the stability and manageability of a traditional UPS system platform.

These series have been developed on a **Line-Interactive, Energy-Saving** modern hardware platform designed to meet your **Home/SOHO** needs. With 3-main battery & surge backed computer outlets, enhanced safety features and a highly controlled operation, you can go ahead and connect onto them your most vital computer systems and related peripherals.

Unique features within these models make it easy to use and manage, protecting your investment for many years to come! They represent a traditional value and a stable platform of operation. We are proud to recommend them to you!



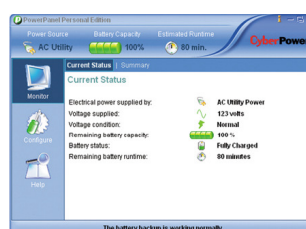
- Energy Saving System based on **GreenPower UPS™** Technology
- Line Interactive Technology
- Automatic Voltage Regulator
- EMI, RFI, Surge & Lighting Spike Protection
- Elaborate Power Management Software Included
- We offer 25,000.- EUR Connected Equipment Life Time Guarantee
- Auto-Restart, Auto-Charge, and Scheduled Shutdown Function
- Easy and Fast Serviceability
- Connection to PC via USB port, or RS232 Serial Port
- Compact Design, High Reliability
- Great Performance Output suitable to Home/SOHO requirements



GreenPower UPS™

Up to 75% Electricity Saving!
 Nearly no Heat Generation
 Great Overall Energy Efficiency
 Lower TCO
 Longer Battery Life

PowerPanel® Personal Edition Management S/W



AUTO-SHUTDOWN SOFTWARE
 CyberPower PowerPanel® Personal Edition Management Software, is Compatible with Windows VISTA, XP, 2000 Pro., ME, 98, Windows Server 2003, Mac and Linux.

CAPACITY:

Value 400-GP: 400VA or 240W. Value 600E-GP: 600VA or 360W. Value 800E-GP: 800VA or 480W

TYPICAL RUN-TIME:

Value 400-GP: 14 min. Value 600E-GP: 24 min. Value 800E-GP: 35 min

INPUT POWER:

- Voltage Range: 165V ~ 270V
- Frequency Range: 47Hz / 63 Hz auto-sensing

OUTPUT POWER:

- On Battery Output Voltage: Simulated Sine-Wave at 230V (+/- 10%)
- On Battery Output Frequency: 50Hz / 60 Hz (+/- 1%)
- Typical Transfer Time: 4ms
- Overload Protection Scheme: *On Main Power by Fuse*, and on Battery Power by *Internal Current Limiting*
- Automatic Voltage Regulator (AVR): Boost Only

BATTERY INFORMATION:

- Sealed Maintenance-Free Lead-Acid Batteries, Replaceable by User
- Value 400-GP: 12V, 4.5 AH x 1. Value 600-GP: 12V, 7 AH x 1. Value 800-GP: 12V, 9 AH x 1
- Typical Recharge Time: 8 Hours

STATUS INDICATORS:

- Power-On / Using Battery LED
- Audio Alarms for: Overload, On-Battery, and Low-Battery

RECEPTACLES:

- Three IEC 320 C13 Plugs

CONNECTORS:

- USB Connector to PC
- RS-232 Serial Connector to PC or Server

MANAGEMENT & CONTROL:

- Manual Self-Test
- Auto Re-Charge
- Auto Re-Start
- Scheduled Shutdown Function
- Power Panel® Personal Edition elaborate software for PC connectivity and Management Control

PHYSICAL INFORMATION:

Dimensions: 320 (L) x 100 (W) x 140 (H) mm

Weight: Value 400E-GP: 4kg. Value 600E-GP: 5.1kg. Value 800E-GP: 6.1kg

Storage Temperature: -15°C ~ +45°C

Operating Temperature: 0°C ~ 40°C

Operating Humidity: 0%~95% non-condensed

**DISTRIBUTED BY:**

CyberPower's
Manufacturing
Facilities are
ISO 9001:2000,
ISO 14000, and
QC080000
Approved